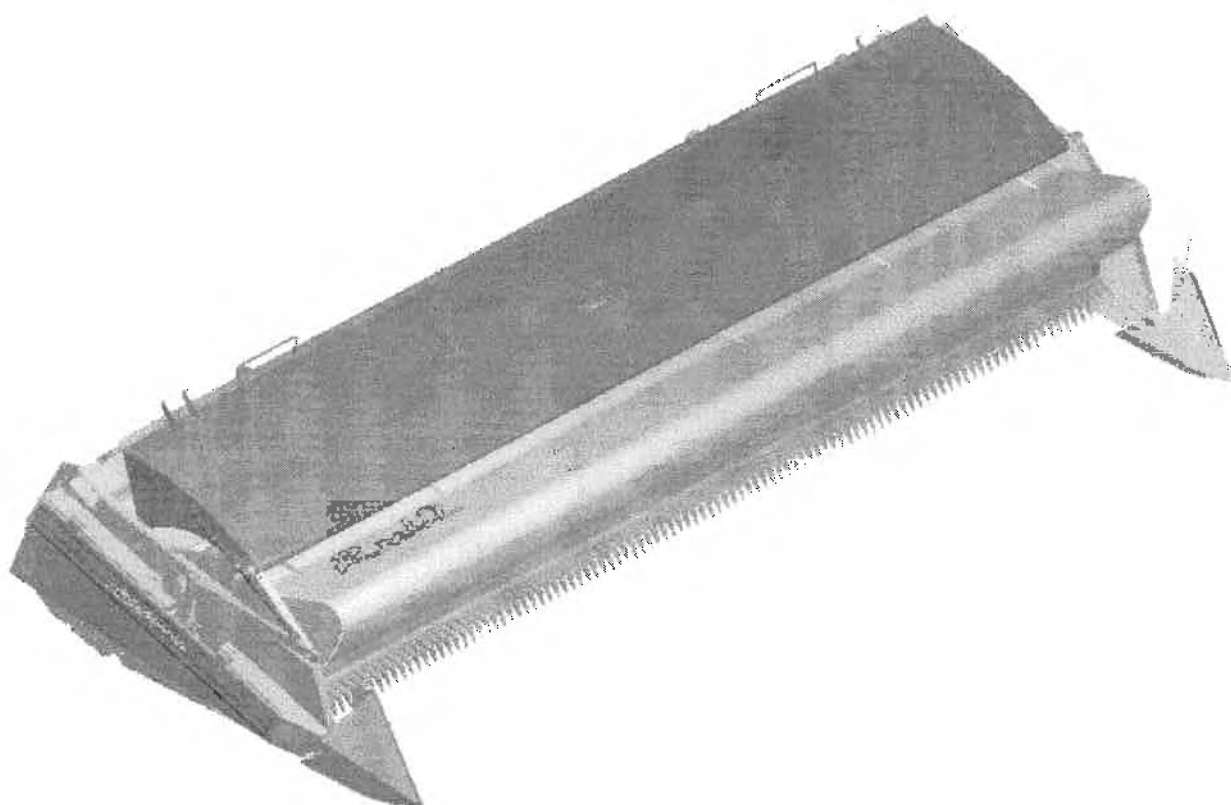


# *RX66 Shelbourne Header* (1998)

## PARTS MANUAL



Shelbourne Reynolds Engineering Ltd  
Stanton  
Bury St Edmunds  
Suffolk IP31 2AR  
England

Telephone: 01359 250415  
Fax. No: 01359 250464

(Stores direct 01359 251231)  
(Stores direct 01359 252031)



## **SHELBOURNE HEADER PARTS MANUAL**

Your *Shelbourne* Header is designed to fit many different types of combine.

For this reason the machine number index is broken down into sections for identification. Your serial and machine numbers are listed below:

SHELBOURNE HEADER SERIAL NUMBER \_\_\_\_\_

SHELBOURNE HEADER MACHINE NUMBER \_\_\_\_\_

ADAPTOR PLATE ASSEMBLY \_\_\_\_\_

DRIVE KIT \_\_\_\_\_

HYDRAULIC FITTING KIT \_\_\_\_\_

OTHER KIT OPTIONS \_\_\_\_\_

\_\_\_\_\_  
\_\_\_\_\_  
\_\_\_\_\_

This manual contains all parts common to the *Shelbourne* Header and is used in conjunction with the combine fittings manual, which contains the adaptor plate, and drive kit parts and fitting, and any other options available.

### **MACHINE IDENTIFICATION**

The *Shelbourne* Header machine identification number is engraved on a plate on the top right hand corner of the header.

The adaptor plate has a plate on the top right hand corner also with the adaptor plate assembly number engraved on it.

The drive kit can be identified by description, and use of the drive kit identification number marked above.

## ORDERING SPARE PARTS

To ensure that you order the correct part from your SRE dealer please use the following procedure.

### ALWAYS QUOTE THE MACHINE AND SERIAL NUMBERS WHEN ORDERING.

Refer to the front of this parts list book (machine assemblies), decide if the part you want is on:

*Shelbourne* Head  
Adaptor Kit  
Drive Kit

If your part is on the Adaptor Kit, identify by matching the part number from the adaptor plate with that in the top left hand corner of the parts lists. You will find the appropriate drawing accompanying the parts list.

If the part you require is on the drive kit, ensure that you have the parts listing for the correct combine model and width. Then progress through to the next drawing following that list, for indication of that part.

If the part you require is on the *Shelbourne* Head assembly, identify the appropriate assembly by matching the part number from the *Shelbourne* Head with the page with the same number marked on the top left hand side.

Use the following sub assembly numbers and descriptions to find the area of the machine that your part is required, i.e. you need a part which is fitted to the auger, your part will be in the auger assembly parts list.

Having decided which sub-assembly your part should be under, use the number beside that sub-assembly description which will begin with 1960-- -- to find the parts listing of the sub-assembly further on in the manual. The number will be printed in the top left hand corner, the sub-assemblies are in numerical order.

Having found the correct parts list, you will find the corresponding drawing by processing through the manual to the next drawing.

The drawings indicate the components by item numbers which you will find are repeated in the left hand side of your parts listing, and therefore referring to the correct part.

If the item within the sub-assembly is a further collection of parts (i.e. a KIT within a sub assembly) then the parts listing for this will be found just after the 1960-- -- sub-assemblies. These smaller assemblies will be in alphabetical and numerical order.

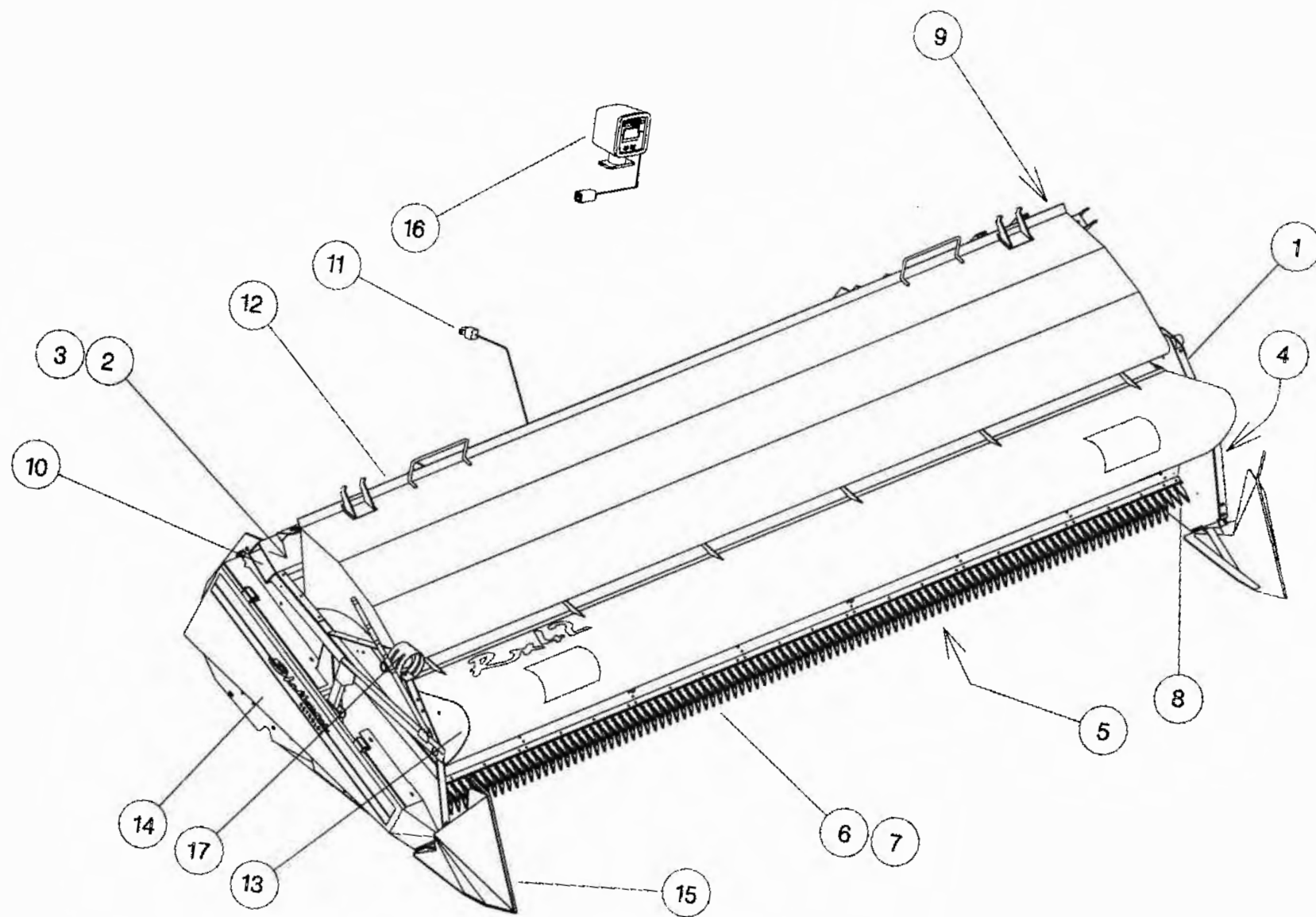


**Shelbourne Reynolds Engineering Limited**

ASSY NUMBER: 196544 11

ASSY DESCRIPTION: RX66 SHAKERPAN SHELBOURNE HEADER (1998)

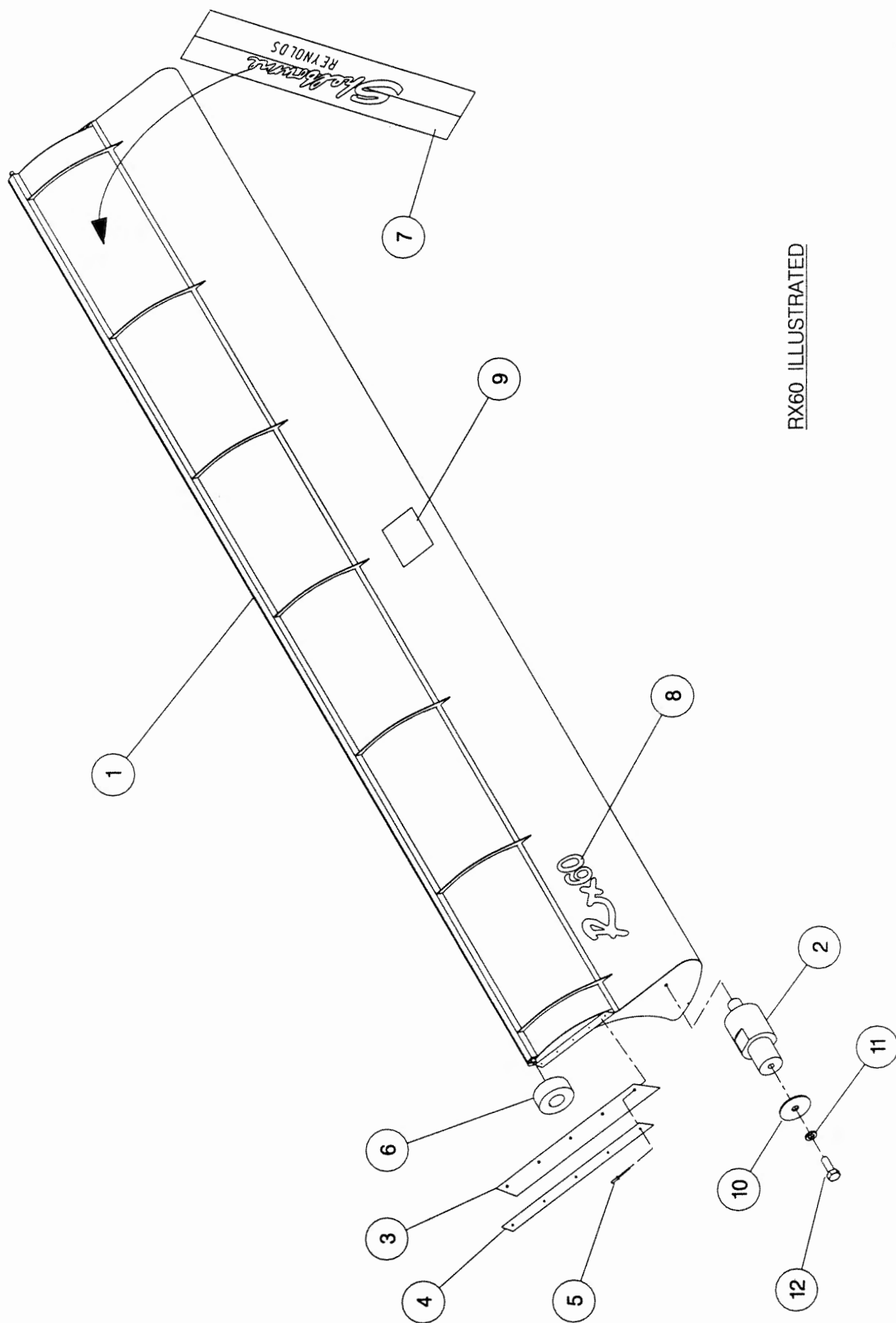
ITEM	PART NO	DESCRIPTION	QTY	ITEM	PART NO	DESCRIPTION	QTY
1	196142 11	FRAME & PARTS	16				
2	196141 11	AUGER ASSY	1				
3	196102 04	AUGER MTG SUB	1				
4	196067 02	DRIVE COMPONENTS	1				
5	196123 11	SHAKERPAN SUB	1				
6	196097 10	STRIPPING ROTOR ASSY RH	1				
7	196097 15	STRIPPING ROTOR ASSY LH	1				
8	196144 01	ROTOR MTG SUB	1				
9	196119 01	ROTOR/AUGER DRIVE SUB	1				
10	196140 11	HYDRAULICS	1				
11	RDS-0005	HEADER MONITORING KIT	1				
12	196120 11	HOOD SUB ASSY	1				
13	196053 11	ADJ CROP DEFLECTOR SUB	1				
14	196145 01	EMBLEMS & GUARDS	1				
15	196078 01	TORPEDO DIVIDER SUB	1				
OR	196132 01	SHORT DIVIDER SUB	1				
16	RDS-0001	COMBINE MONITOR KIT	1				
17	196143 11	HEADER LIGHTS SUB	1				



**Shelbourne Reynolds Engineering Limited**

ASSY NUMBER: 196053 11				ASSY DESCRIPTION: ADJ.CROP DEFLECTOR SUB ASSY (RX66)			
ITEM	PART NO	DESCRIPTION	QTY	ITEM	PART NO	DESCRIPTION	QTY
1	192729 01	ADJ.CROP DEFLECTOR (6.6M)	1				
2	190361 01	PIVOT BUSH	2				
3	192037 01	RUBBER SEAL	2				
4	192038 01	CLAMP STRIP	2				
5	POP-0006	POP RIVET	10				
6	191642 01	ROLLER	2				
7	191981 01	EMBLEM (SHEL.REYNOLDS)	1				
8	192524 08	EMBLEM (RX66)	1				
9	192718 01	TRANSFER (NO STEP)	1				
10	190119 05	PLAIN WASHER	2				
11	WSH-0058	WASHER	2				
12	HSS-0140	SETSCREW	2				

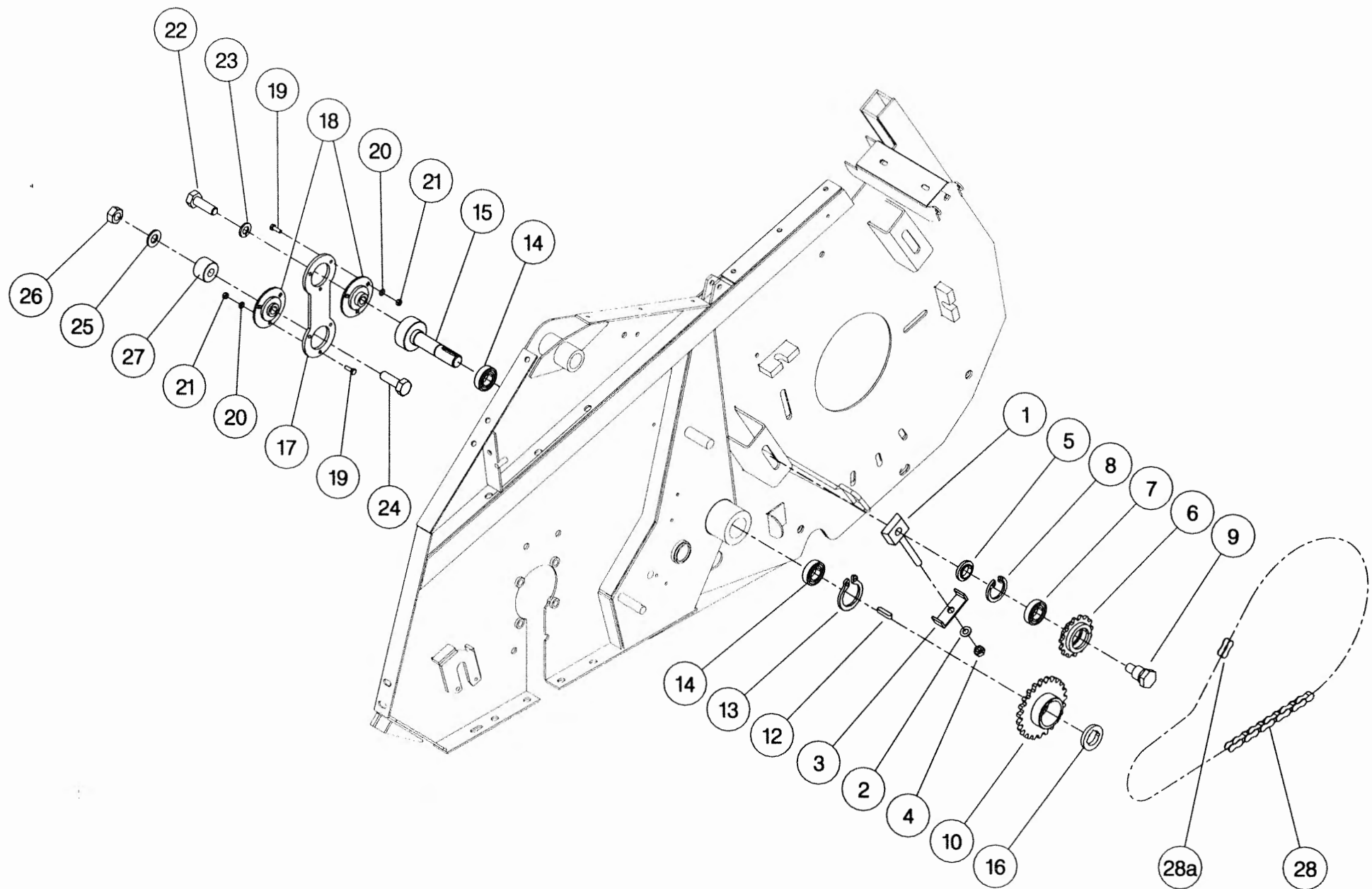




RX60 ILLUSTRATED

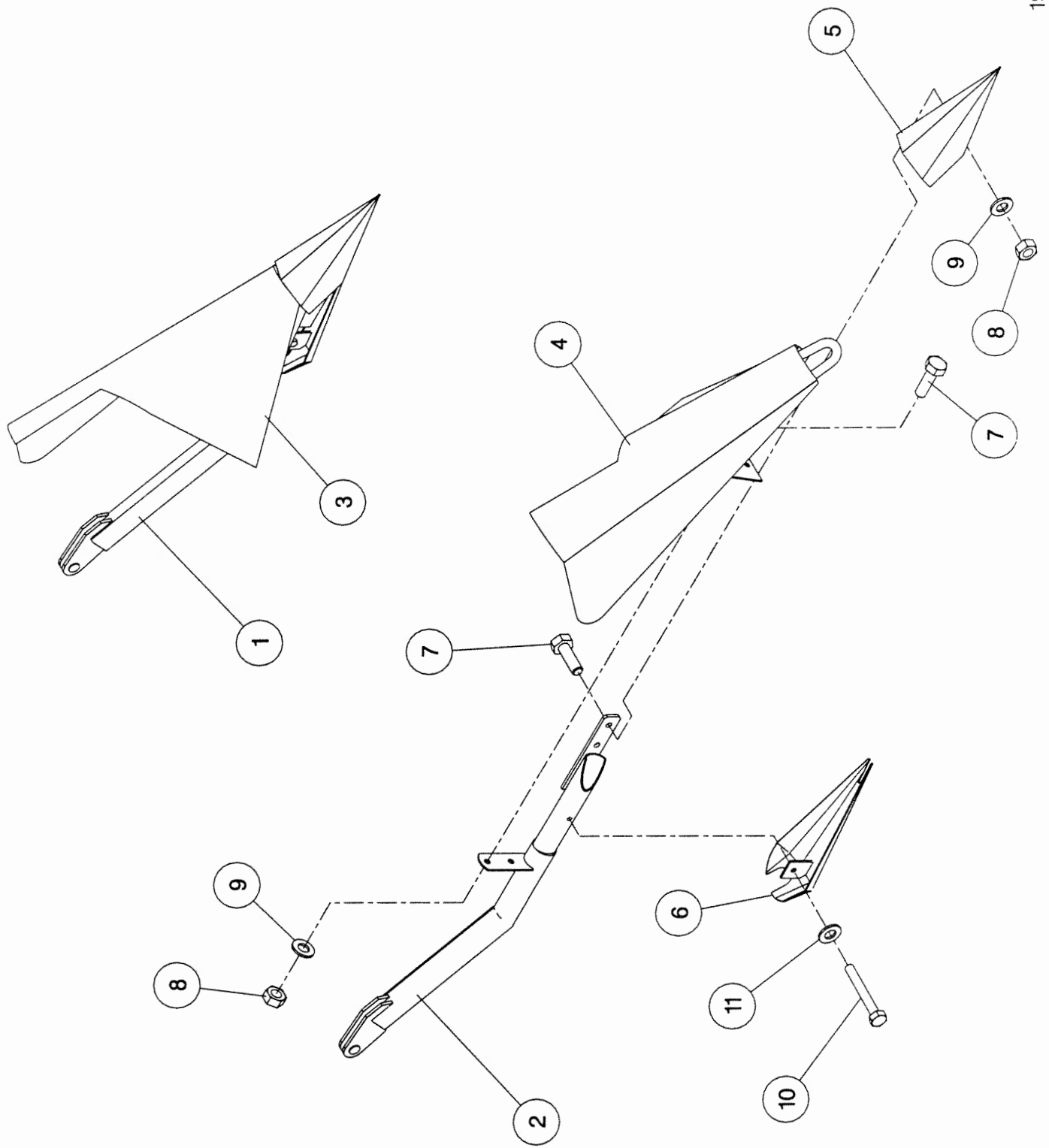
**Shelbourne Reynolds Engineering Limited**

ASSY NUMBER:		196067 02		ASSY DESCRIPTION:		DRIVE PARTS SHAKERPAN STD	
ITEM	PART NO	DESCRIPTION	QTY	ITEM	PART NO	DESCRIPTION	QTY
1	191777 01	IDLER ADJ SCREW	1				
2	WSH-0018	WASHER	1				
3	191774 01	PLATE	1				
4	NUT-0269	NUT	1				
5	191040 01	SPACER	1				
6	131014 01	SPROCKET IDLER	1				
7	BRG-1995	BEARING	1				
8	CIR-0470	CIRCLIP	1				
9	190060 06	IDLER SPINDLE	1				
10	192258 01	PAN DRIVE SPROCKET 25T	1				
11							
12	K0807035	KEY	1				
13	CIR-1125	CIRCLIP	1				
14	BRG-1994	BEARING	2				
15	192263 01	PAN DRIVE SHAFT	1				
16	BSHZ02553	LOCKING BUSH	1				
17	192265 01	PITMAN	1				
18	BRG-22500	BEARING	2				
19	HSS-0086	SETSCREW	6				
20	WSH-0009	FLAT WASHER	6				
21	NUT-0260	NUT	6				
22	HSS-0318	SETSCREW	1				
23	WSH-0070	SPRING WASHER	1				
24	BLT-2316	BOLT	1				
25	WSH-0024	FLAT WASHER	1				
26	NUT-0271	NUT	1				
27	192344 01	SPACER	1				
28	CHN-01682	CHAIN + JOINER	1				
28a	CHN-01600	CHAIN JOINER LINK	1				



**Shelbourne Reynolds Engineering Limited**

ASSY NUMBER: 196078 01				ASSY DESCRIPTION: TORPEDO DIVIDERS FOR RX & CX MACHINES			
ITEM	PART NO	DESCRIPTION	QTY	ITEM	PART NO	DESCRIPTION	QTY
1	192533 01	DIVIDER ARM LH	1				
2	192533 02	DIVIDER ARM RH	1				
3	192537 01	DIVIDING PLATE LH	1				
4	192537 02	DIVIDING PLATE RH	1				
5	191770 01	NOSE CONE	2				
6	191862 01	SHOE	2				
7	HSS-0191	SETSCREW	8				
8	NUT-0265	NUT	8				
9	WSH-0015	WASHER	8				
10	HSS-0155	BOLT	2				
11	WSH-0058	WASHER	2				





**Shelbourne Reynolds Engineering Limited**

ASSY NUMBER: 196097 10

ASSY DESCRIPTION:STRIPPING ROTOR ASSY (R/H) 3.0m

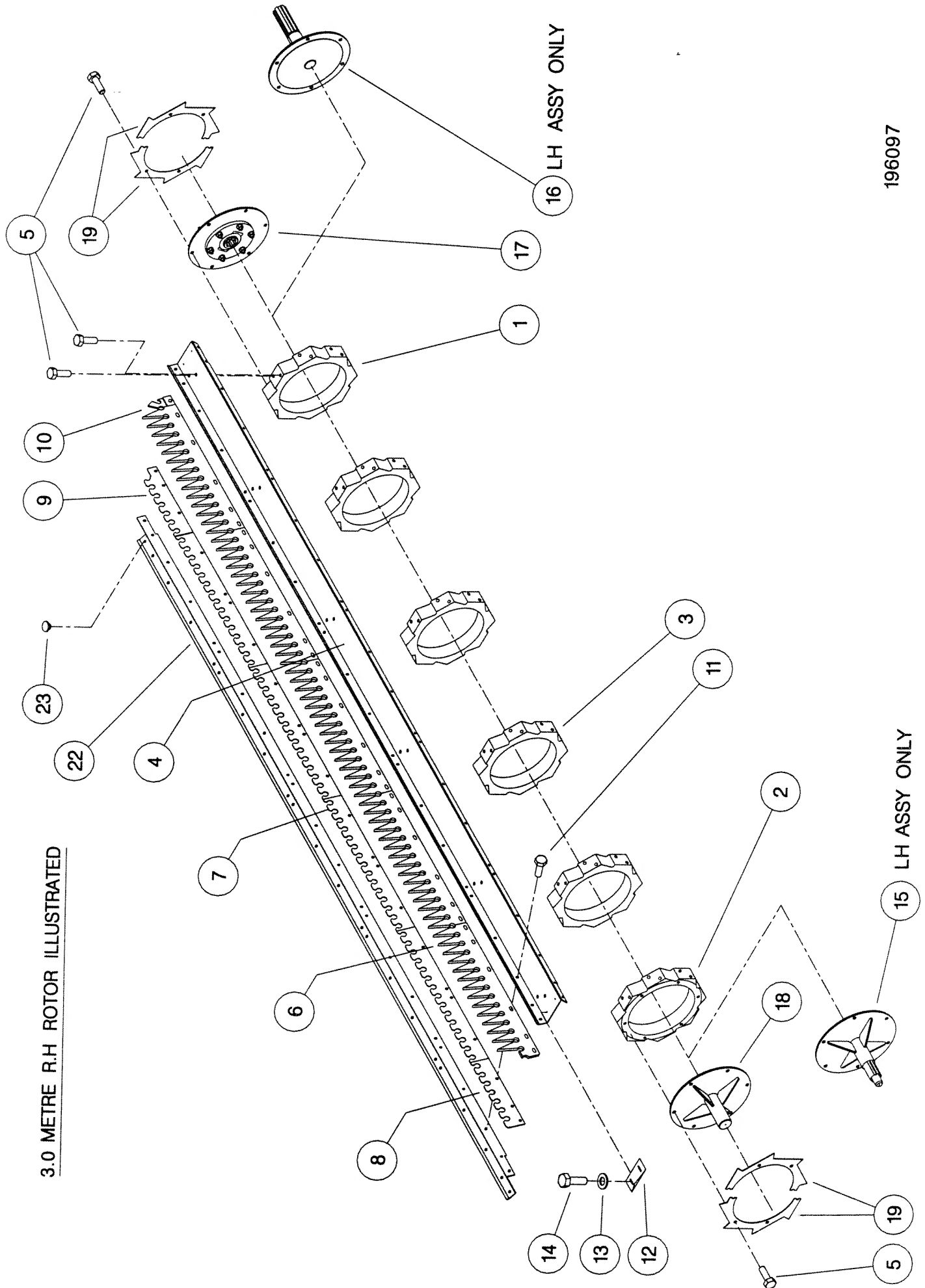
ITEM	PART NO	DESCRIPTION	QTY	ITEM	PART NO	DESCRIPTION	QTY
1	192892 01	OUTER HUB CASTING L.H.	1				
2	192892 02	OUTER HUB CASTING R.H.	1				
3	192892 03	INNER HUB CASTING	4				
4	192890 02	ROTOR SECTION 3.0M	7				
5	HSSG10204	SET SCREW	108				
6	191968 02	ELITE ELEMENT	40				
OR	193087 01	ELITE ELEMENT(SLOTTED)	40				
7	192291 01	ANTI WEAR STRIP CTR.	32				
OR	192291 07	S-TYPE STRIP CTR	32				
8	192291 02	ANTI WEAR STRIP END	8				
OR	192291 08	S-TYPE STRIP END	8				
9	192291 03	ANTI WEAR STRIP CTR END	8				
OR	192291 09	S-TYPE STRIP CTR END	8				
10	191865 02	CENTRE FINGER (RH)	8				
11	HSSF08174	SET SCREW	176				
12	192679 01	ANTI WRAP PLATE	8				
13	WSH-1034	PENNY WASHER	16				
14	SCW-5180	SELF TAP.SCREW	16				
15							
16							
17	KIT-00976	BALL COUPLING KIT	1				
18	192899 01	IDLE SHAFT W/ASSY	1				
19	192959 01	OUTER CLAMP RING (HALF)	4				
20							
21							
22	193117 02	ROTOR SECTION 3.0M (HOLE)	1				
23	BPG-0020	BODY PLUG	1				

**Shelbourne Reynolds Engineering Limited**

ASSY NUMBER: 196097 15				ASSY DESCRIPTION:STRIPPING ROTOR ASSY (L/H) 3.6m			
ITEM ✓	PART NO	DESCRIPTION	QTY	ITEM	PART NO	DESCRIPTION	QTY
1	192892 01	OUTER HUB CASTING L.H.	1				
2	192892 02	OUTER HUB CASTING R.H.	1				
3	192892 03	INNER HUB CASTING	5				
4	192890 03	ROTOR SECTION 3.6M	8				
5	HSSG10204	SET SCREW	124				
6	191968 02	ELITE ELEMENT	48				
OR	193087 01	ELITE ELEMENT(SLOTTED)	48				
7	192291 01	ANTI WEAR STRIP CTR.	40				
OR	192291 07	S-TYPE STRIP CTR	40				
8	192291 02	ANTI WEAR STRIP END	8				
OR	192291 08	S-TYPE STRIP END	8				
9	192291 03	ANTI WEAR STRIP CTR END	8				
OR	192291 09	S-TYPE STRIP CTR END	8				
10	191865 01	CENTRE FINGER (LH)	8				
11	HSSF08174	SET SCREW	208				
12	192679 01	ANTI WRAP PLATE	8				
13	WSH-1034	PENNY WASHER	16				
14	SCW-5180	SELF TAP.SCREW	16				
15	193103 01	CENTRE SHAFT W/ASSY	1				
16	192897 01	DRIVE SHAFT W/ASSY	1				
17							
18							
19	192959 01	OUTER CLAMP RING (HALF)	4				
20							
21							

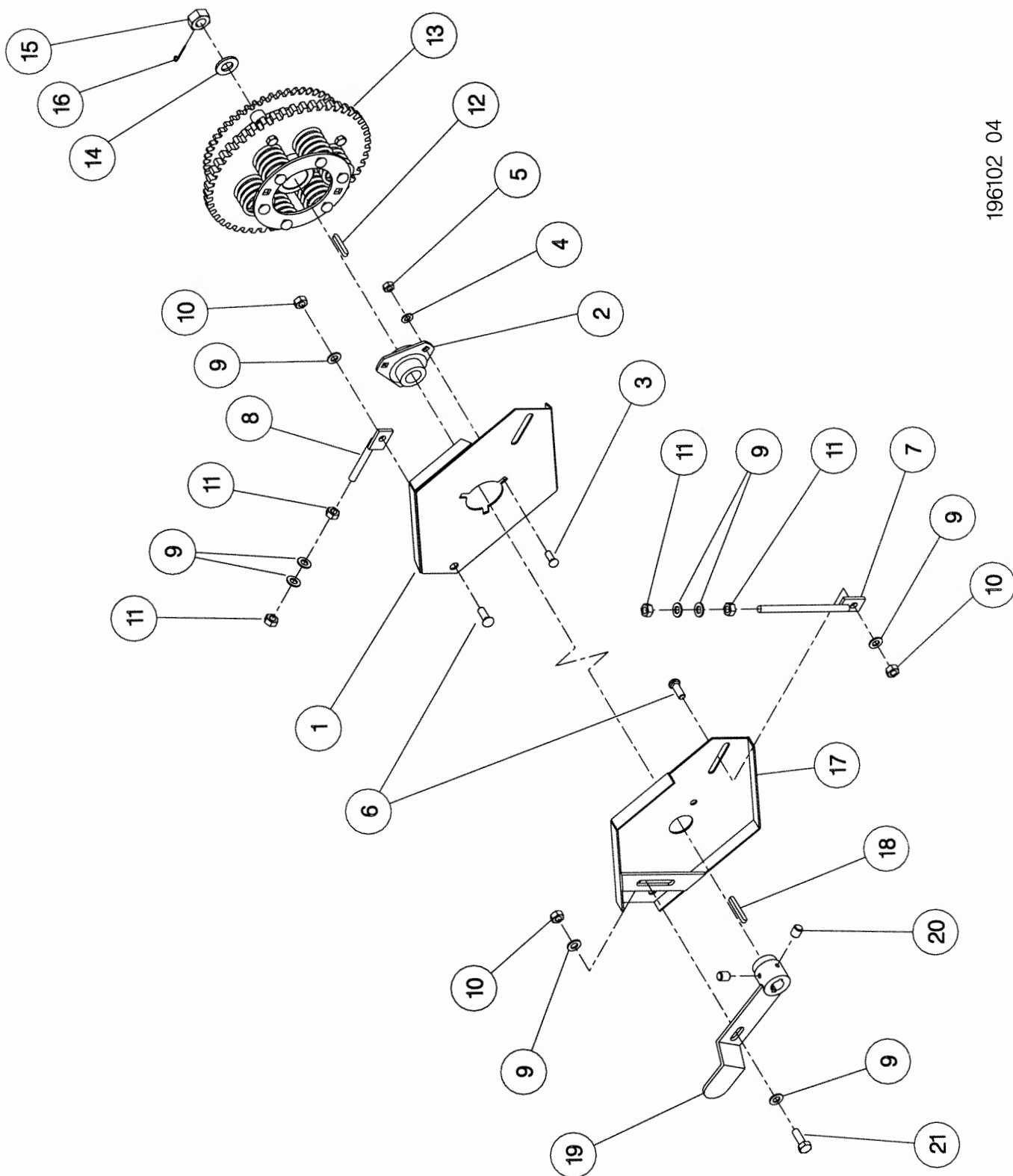


3.0 METRE R.H ROTOR ILLUSTRATED



**Shelbourne Reynolds Engineering Limited**

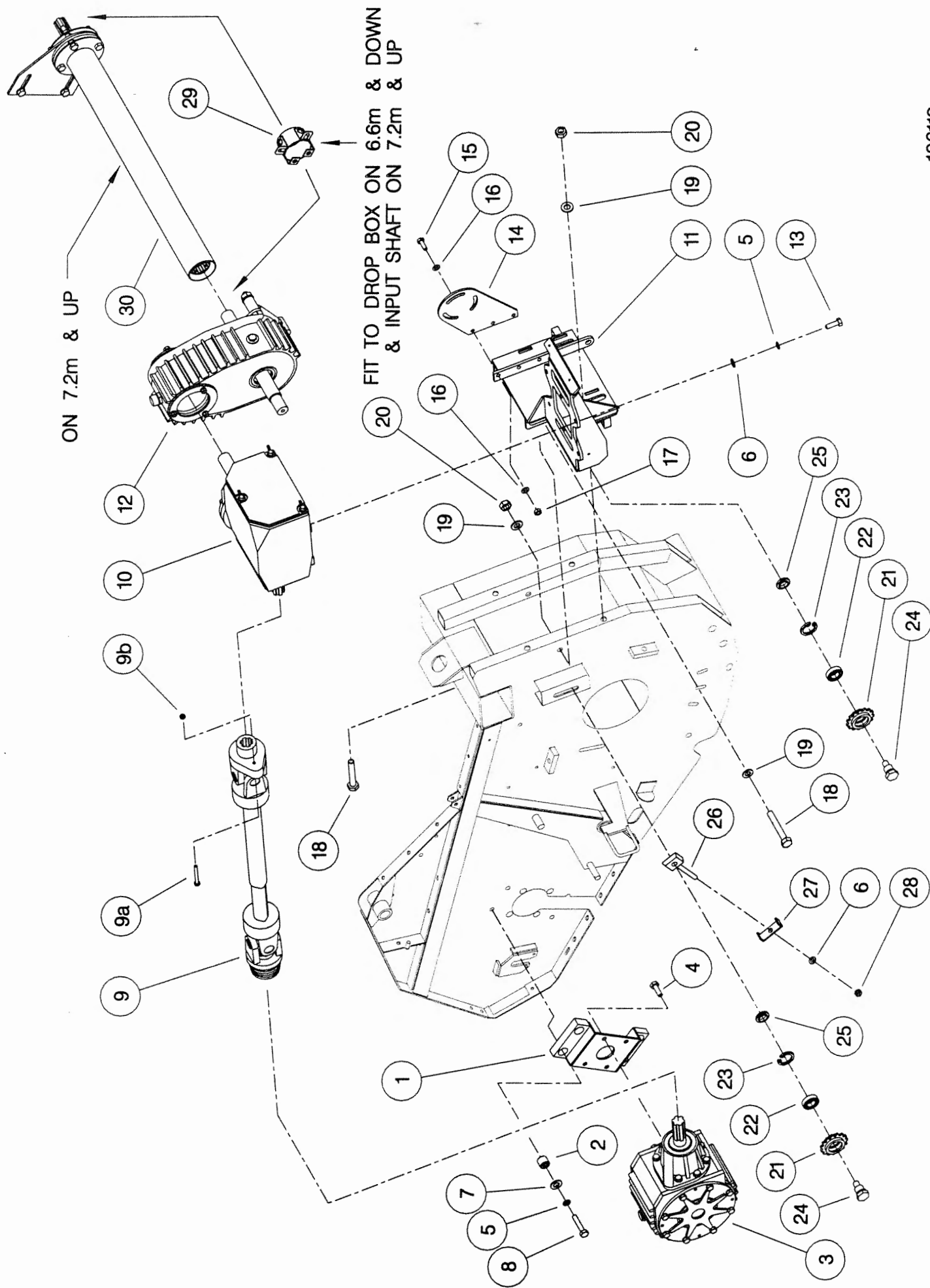
ASSY NUMBER: 196102 04				ASSY DESCRIPTION: AUGER MOUNTING/DRIVE KIT (RX) 1996			
ITEM	PART NO	DESCRIPTION	QTY	ITEM	PART NO	DESCRIPTION	QTY
1	200035 03	SUPPORT PLATE L.H.	1				
2	BRG-0240	BEARING	1				
3	BLT-3745	COACH BOLT	3				
4	WSH-0015	PLAIN WASHER	3				
5	NUT-0265	NYLOC NUT	3				
6	BLT-3790	COACH BOLT	4				
7	192636 06	VERTICAL ADJUSTER	2				
8	192636 01	HORIZONTAL ADJUSTER	2				
9	WSH-0018	PLAIN WASHER	14				
10	NUT-0269	NYLOC NUT	5				
11	NUT-0170	PLAIN NUT	8				
12	K0807050	KEY	1				
13	KIT-00115	AUGER SLIP CLUTCH (SEE PARTS LIST KIT-00115)	1				
14	WSH-0030	PLAIN WASHER	1				
15	NUT-0580	CASTLE NUT	1				
16	PIN-1150	SPLIT PIN	1				
17	200038 01	SUPPORT PLATE R.H.	1				
18	K0807060	KEY	1				
19	200120 03	ADJUSTER ASSY	1				
20	SCW-4535	GRUB SCREW	2				
21	HSS-0241	SET SCREW	1				



**Shelbourne Reynolds Engineering Limited**

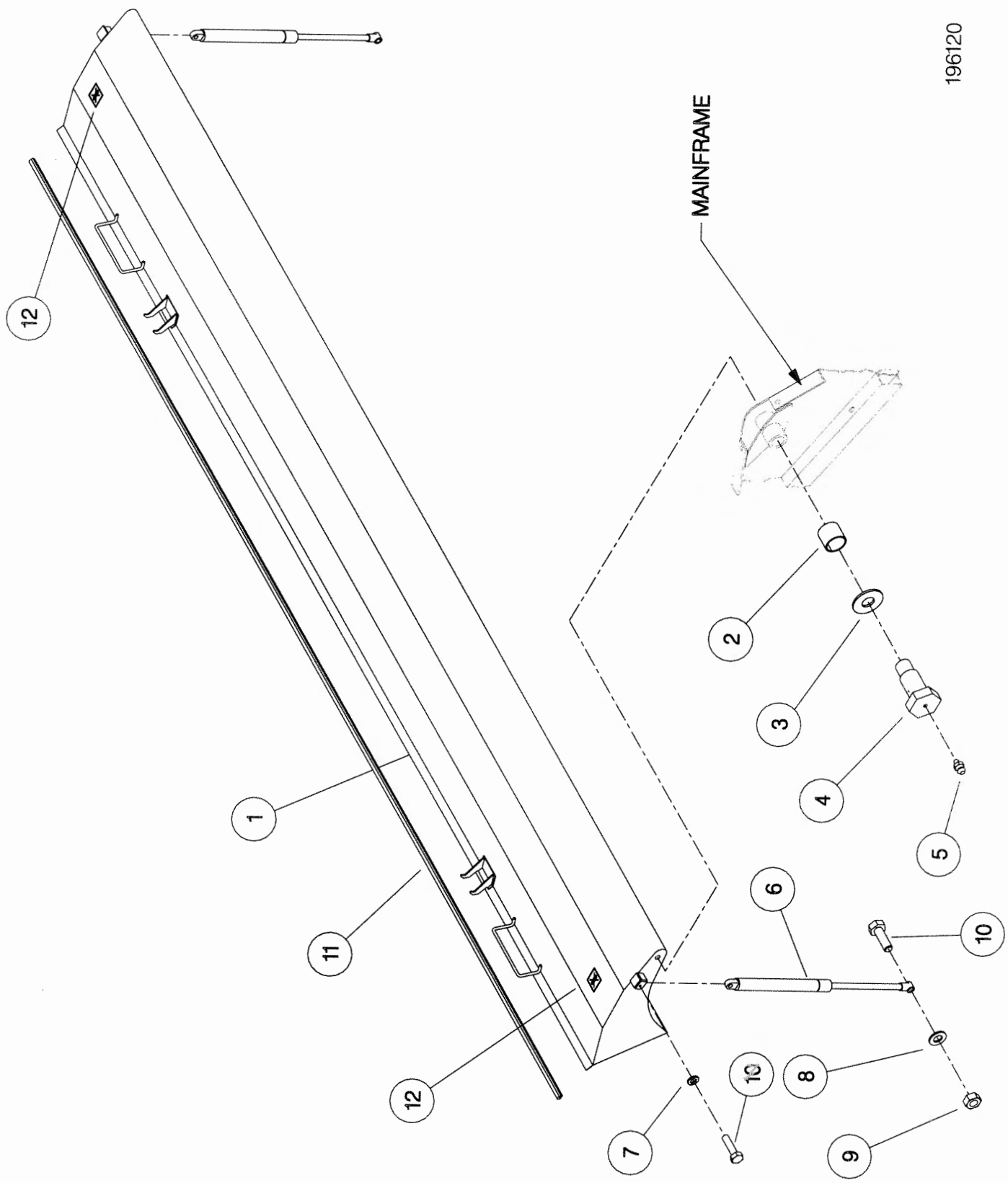
ASSY NUMBER: 196119 01      ASSY DESCRIPTION: ROTOR/AUGER DRIVE 1997 (5.4 - 6.6M)

ITEM	PART NO	DESCRIPTION	QTY	ITEM	PART NO	DESCRIPTION	QTY
1	191652 01	GEARBOX BRACKET	1	29	KIT-00525	PTO GUARD KIT	1
2	BSH-1530	BUSH	4				
3	GEA-0095	BEVEL GEARBOX (SEE PARTS LIST GEA-0095)	1				
4	HSSG12174	SET SCREW	4				
5	WSH-0065	SPRING WASHER	10				
6	WSH-0018	PLAIN WASHER	8				
7	190119 04	PLAIN WASHER	4				
8	BLTA12290	BOLT	4				
9	PTO-09010	POWER SHAFT	1				
9a	BLT-2158	SHEAR BOLT					
9b	NUT-0164	NUT					
10	GEA-0135	FIVE SPEED GEARBOX ASSY (SEE PARTS LIST GEA-0135)	1				
11	192091 01	GEARBOX BRACKET (ALUM./FINS)	1				
12	GEA-0101	DROPBOX ASSY (SEE PARTS LIST GEA-0101)	1				
13	HSS-0238	SET SCREW	6				
14	191680 01	DROP BOX SUPPORT PLATE	1				
15	HSS-0194	SET SCREW	3				
16	WSH-0015	PLAIN WASHER	6				
17	NUT-0265	NYLOC NUT	3				
18	BLT-2316	BOLT	4				
19	WSH-0024	PLAIN WASHER	6				
20	NUT-0271	NYLOC NUT	4				
21	131041 01	SPROCKET IDLER (3/4" PITCH)	2				
22	BRG-1995	BEARING	2				
23	CIR-0470	CIRCLIP	2				
24	190060 06	IDLER SPINDLE	2				
25	191040 01	IDLER SPACER	2				
26	191777 01	IDLER ADJ SCREW	1				
27	191774 01	PLATE	1				
28	NUT-0269	NUT	1				



Shelbourne Reynolds Engineering Limited

ASSY NUMBER: 196120 11				ASSY DESCRIPTION: TOP DOOR COWL ASSY (RX66) 1997			
ITEM	PART NO	DESCRIPTION	QTY	ITEM	PART NO	DESCRIPTION	QTY
1	193288 01	COWL ASSY (RX66)	1				
2	BSH-3030	BUSH	2				
3	192813 01	LARGE WASHER	2				
4	192812 01	COWL PIN	2				
5	NIP-0001	GREASE ZERK	2				
6	GSTA14406	GAS STRUTT	2				
7	WSH-0061	WASHER	2				
8	WSH-0015	WASHER	2				
9	NUT-0265	NUT	2				
10	BLTA10290	BOLT	4				
11	EDS-11600	SEAL STRIP	6.6m				
12	192718 01	TRANSFER (NO STEP)	2				

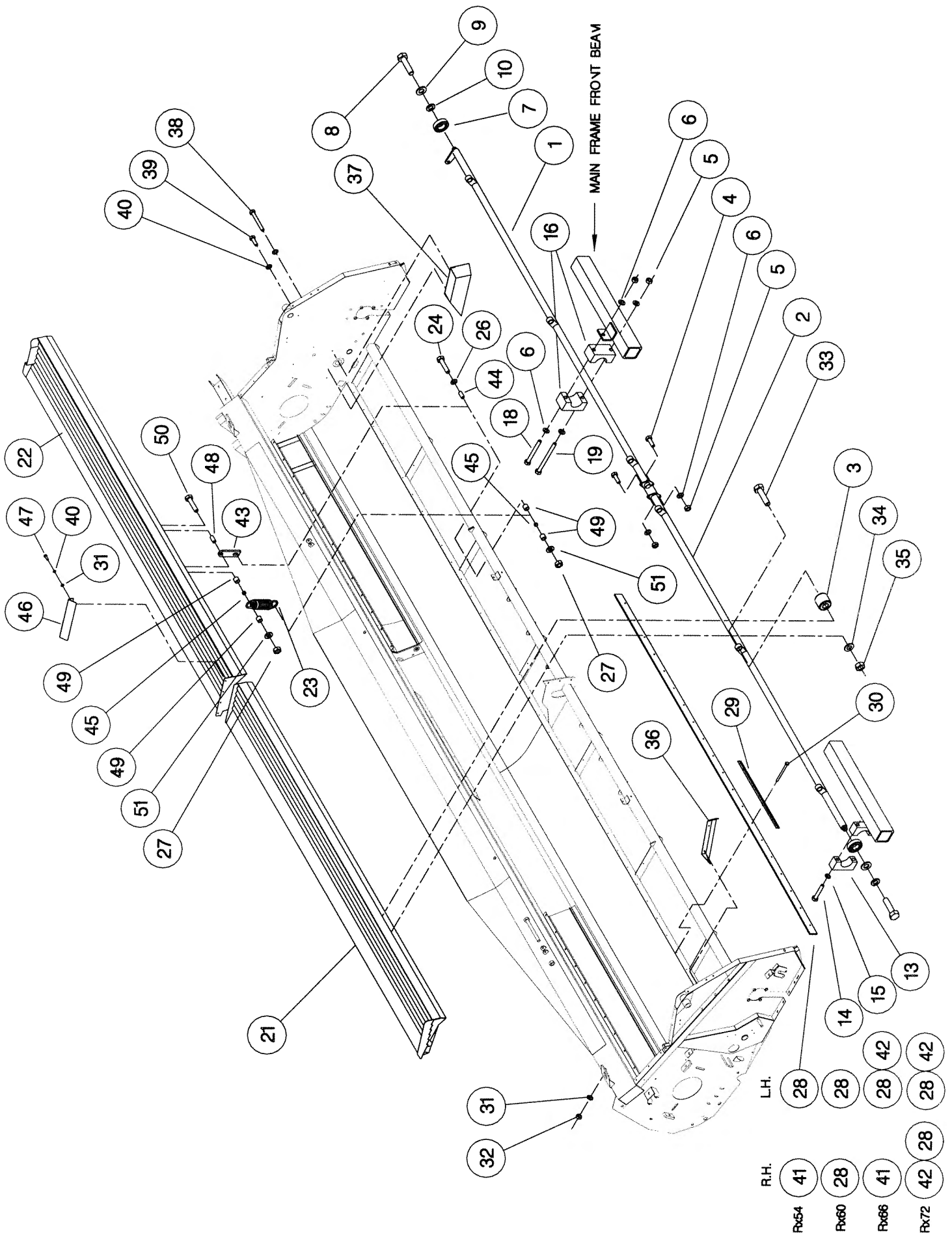


196120

**Shelbourne Reynolds Engineering Limited**

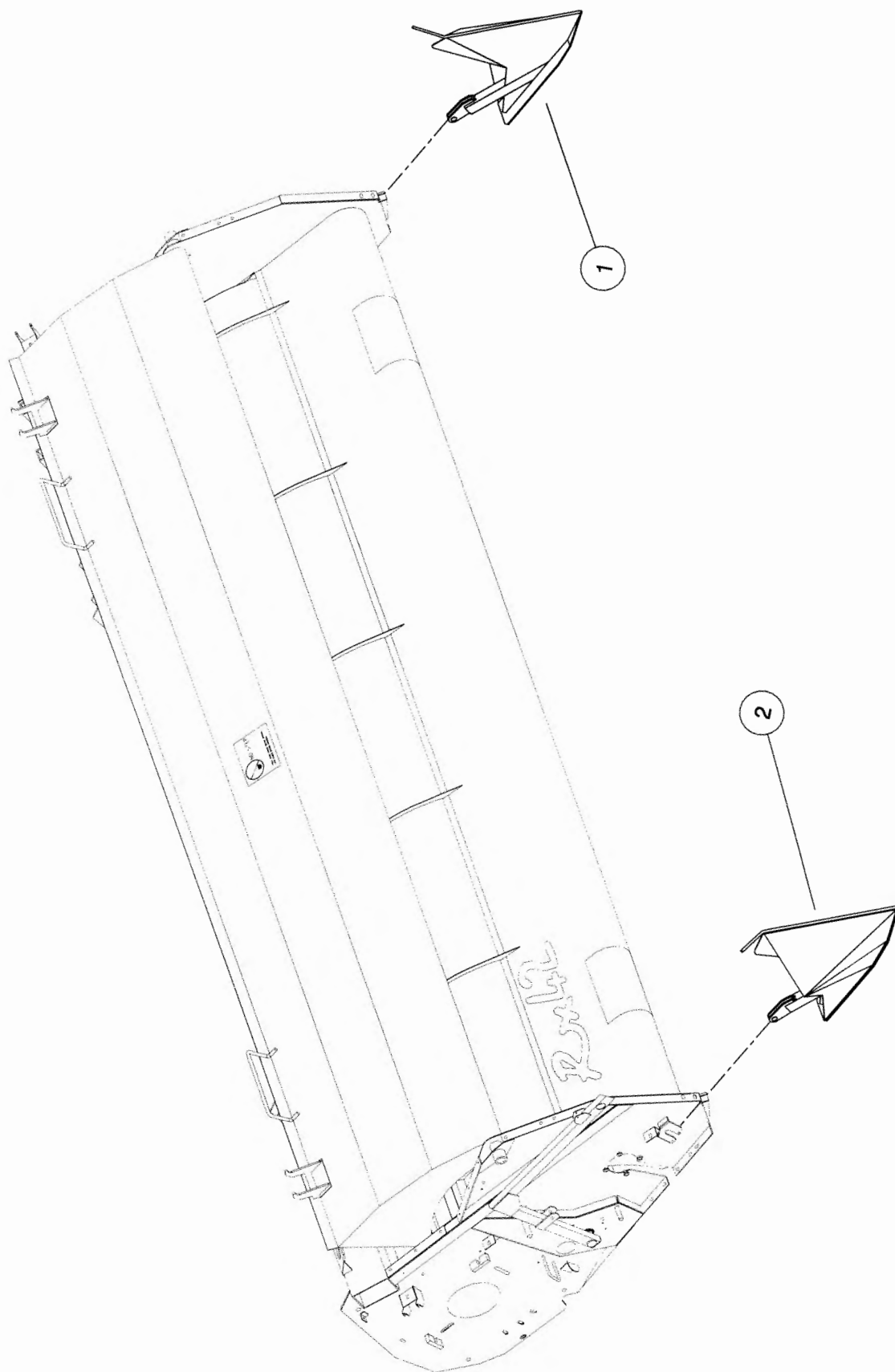
ASSY NUMBER: 196123 11				ASSY DESCRIPTION: SHAKER PAN SUB (RX66 - 1997)			
ITEM	PART NO	DESCRIPTION	QTY	ITEM	PART NO	DESCRIPTION	QTY
1	192732 01	TORSION TUBE L.H (3.6M)	1	38	BLT-2090	BOLT	2
2	192289 01	TORSION TUBE R.H (3.0M)	1	39	HSS-0084	SET SCREW	2
3	BSH-1530	RUBBER BUSH INSERT	6	40	WSH-0056	SPRING WASHER	8
4	HSS-0191	SETSCREW	2	41	192274 01	SEAL STRIP	1
5	NUT-0265	NYLOC NUT	10	42	192738 02	OUTER SEAL STRIP	1
6	WSH-0015	FLAT WASHER	14	43	192969 01	RETAINER	6
7	BRG-1995	BEARING	2	44	192970 01	TUBE	6
8	HSS-0315	SET SCREW	2	45	PSP-01201	PLASTIC SPACER	12
9	WSH-0070	SPRING WASHER	2	46	193293 01	COVER PLATE	1
10	WSH-0024	PLAIN WASHER	2	47	HSS-0084	SET SCREW	4
11				48	192970 02	TUBE	6
12				49	PSP-01800	PLASTIC SPACER	24
13	192264 02	CLAMP BLOCK TOP	2	50	BLTA08530	BOLT	6
14	BLT-2197	BOLT	4	51	WSH-1038	PENNY WASHER	12
15	WSH-0061	SPRING WASHER	4				
16	192266 01	PIVOT BLOCK (PAIR)	4				
17							
18	BLT-2209	BOLT	4				
19	HSSA10680	SETSCREW	4				
20							
21	193312 01	SHAKER PAN ASSY R.H (3.0M)	1				
22	193310 01	SHAKER PAN ASSY L.H (3.6M)	1				
23	SPGA32221	SPRING	6				
24	BLTA08500	BOLT	6				
25							
26	WSH-0012	WASHER	12				
27	NUT-0263	NUT	12				
28	192738 01	SEAL STRIP	1				
29	192273 01	CLAMP STRIP	11				
30	BLT-2110	BOLT	44				
31	WSH-0009	FLAT WASHER	48				
32	NUT-0260	NYLOC NUT	44				
33	HSS-0265	SET SCREW	6				
34	WSH-0018	PLAIN WASHER	6				
35	NUT-0269	NYLOC NUT	6				
36	192355 01	END DEFLECTOR R.H.	1				
37	192354 01	END DEFLECTOR L.H.	1				





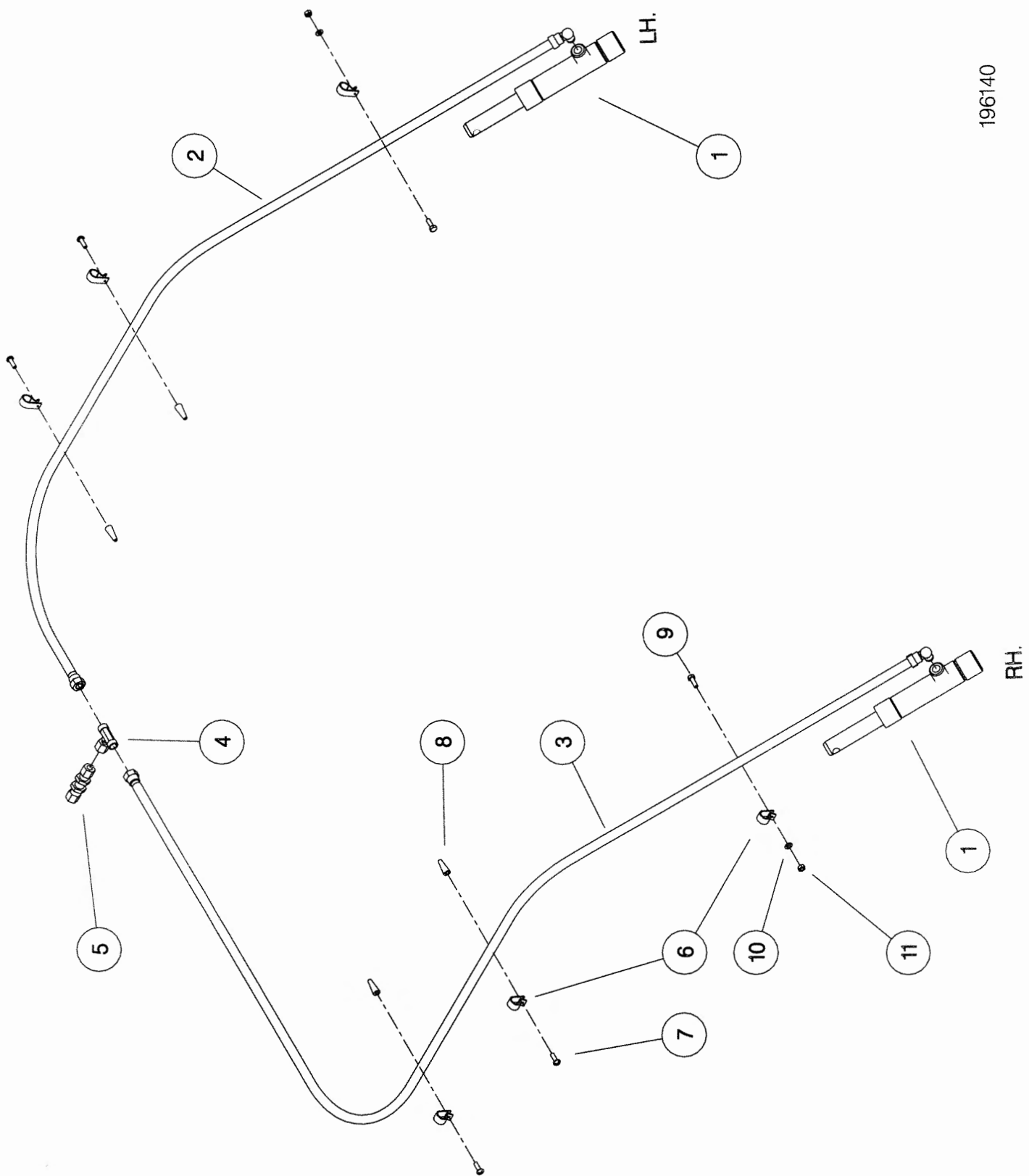
## 24

ITEM		PART NO	DESCRIPTION	QTY	ASSY DESCRIPTION: SHORT DIVIDERS SUB (RX & CX)			
1		193348 01	SHORT DIVIDER LH	1				
2		193348 02	SHORT DIVIDER RH	1				



**Shelbourne Reynolds Engineering Limited**

ASSY NUMBER: 196140 11				ASSY DESCRIPTION: HYDRAULIC CIRCUIT SUB 6.6M			
ITEM	PART NO	DESCRIPTION	QTY	ITEM	PART NO	DESCRIPTION	QTY
1	REF	HYDRAULIC RAM	2				
2	HHBC31610	HYDRAULIC HOSE LH	1				
3	HHBC56610	HYDRAULIC HOSE RH	1				
4	HPPD07100	HYD.TEE FITTING	1				
5	FIT-0213	HYD.BULKHEAD FITT.	1				
6	CLP-01012	P CLIP	6				
7	SCW-5180	SELF TAP SCREW	4				
8	PFS-00500	PANEL FASTENER	4				
9	HSS-0086	SETSCREW	2				
10	WSH-0009	PLAIN WASHER	2				
11	NUT-0260	NYLOC NUT	2				



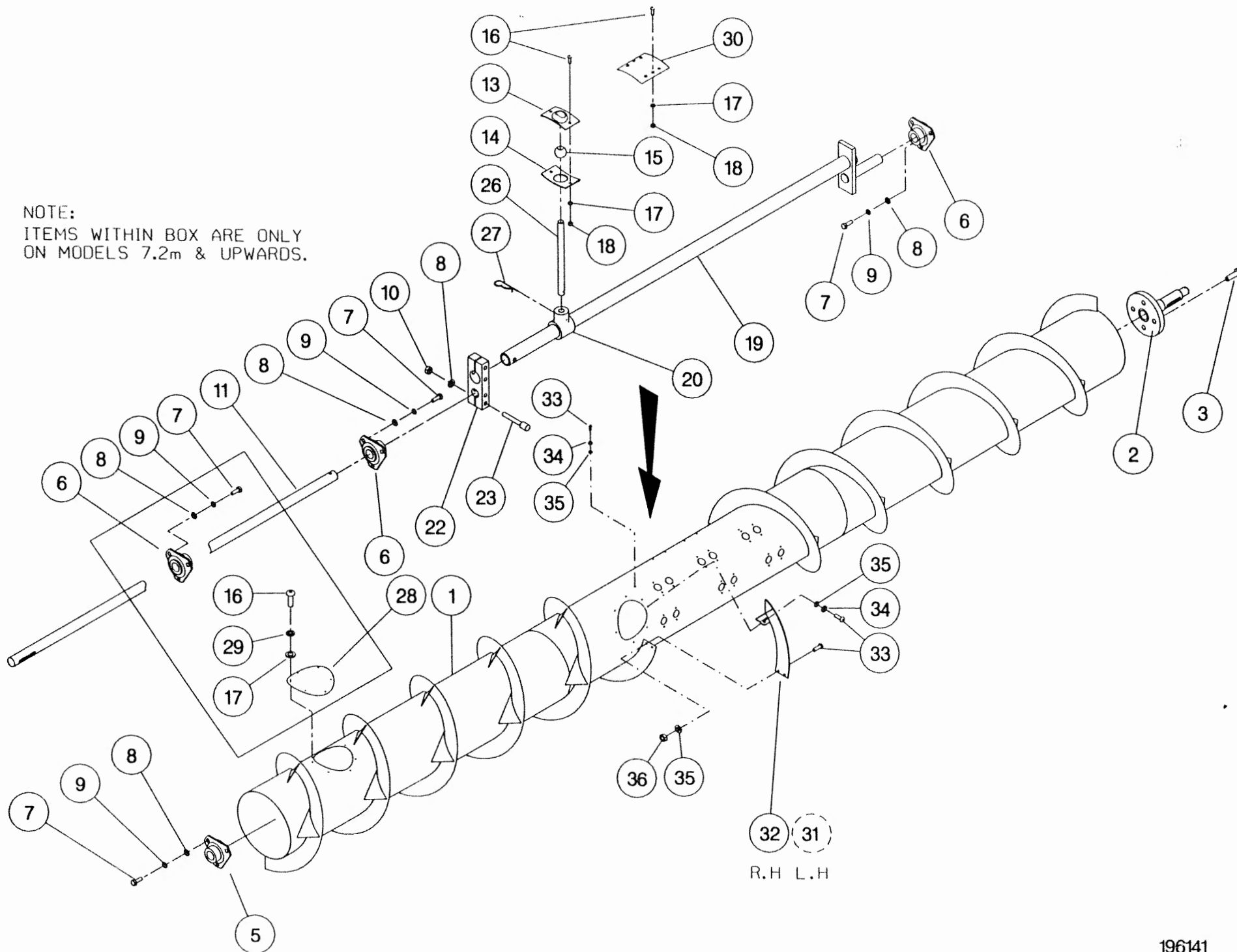
196140

**Shelbourne Reynolds Engineering Limited**

ASSY NUMBER: 196141 11 ASSY DESCRIPTION: AUGER ASSY 6.6M (1998)

ITEM	PART NO	DESCRIPTION	QTY	ITEM	PART NO	DESCRIPTION	QTY
1	193500 01	AUGER W.ASSY.	1	27	AUG-03000	HAIRPIN COTTER	
2	192011 01	AUGER DRIVE SHAFT	1			(16 FINGERS OPTION)	16
3	HSSF12204	SET SCREW	4	OR		(20 FINGERS OPTION)	20
4				OR		(24 FINGERS OPTION)	24
5	BRG-2020	BEARING	1	28	193203 01	COVER PLATE	2
6	BRG-0240	BEARING	2	29	WSH-0056	SPRING WASHER	12
7	HSS-0191	SET SCREW	9	30	190735 01	BLANKING PLATE	
8	WSH-0015	PLAIN WASHER	13			(16 FINGERS OPTION)	8
9	WSH-0061	SPRING WASHER	9	OR		(20 FINGERS OPTION)	4
10	NUT-0265	NYLOC NUT	4	OR		(24 FINGERS OPTION)	0
11	192363 06	AUGER SHAFT	1	31	192227 01	AUGER FLIGHT EXTENSION LH	1
12				32	192227 02	AUGER FLIGHT EXTENSION RH	1
13	AUG-01000	UPPER FINGER PL. (CONCAVE)		33	SCBA08172	BUT. SCKT HD SCREW	8
		(16 FINGERS OPTION)	16	34	WSH-0058	WASHER	4
OR		(20 FINGERS OPTION)	20	35	WSH-0012	WASHER	8
OR		(24 FINGERS OPTION)	24	36	NUT-0263	NUT	4
14	AUG-01500	LOWER FINGER PL. (CONVEX)					
		(16 FINGERS OPTION)	16				
OR		(20 FINGERS OPTION)	20				
OR		(24 FINGERS OPTION)	24				
15	AUG-02000	FINGER GUIDE (BALL)					
		(16 FINGERS OPTION)	16				
OR		(20 FINGERS OPTION)	20				
OR		(24 FINGERS OPTION)	24				
16	SCW-4960	BUTT.HD.SKT.SCREW	60				
17	WSH-0009	PLAIN WASHER	60				
18	NUT-0260	NYLOC NUT	48				
19	192368 01	AUGER CRANK	1				
20	AUG-02500	FINGER HOLDER	24				
21							
22	192364 01	AUGER CLAMP	1				
23	SCCA10412	CAP HD SKT SCREW	4				
24							
25							
26	192310 01	FINGER (16mm DIA.)					
		(16 FINGERS OPTION)	16				
OR		(20 FINGERS OPTION)	20				
OR		(24 FINGERS OPTION)	24				

NOTE:  
ITEMS WITHIN BOX ARE ONLY  
ON MODELS 7.2m & UPWARDS.

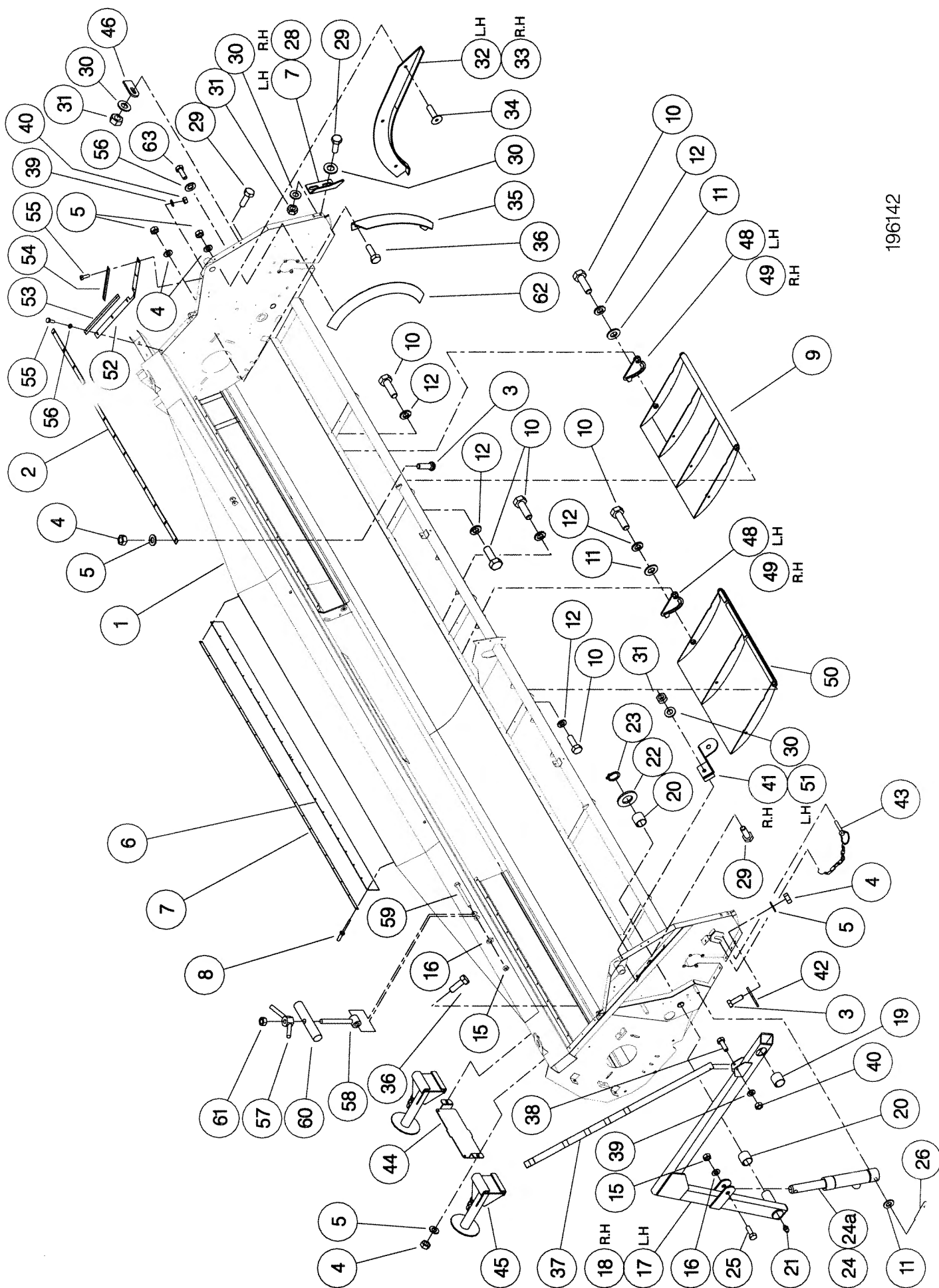


R.H L.H

**Shelbourne Reynolds Engineering Limited**

ASSY NUMBER: 196142 11				ASSY DESCRIPTION: FRAME & PARTS SUB (RX66-1998)			
ITEM	PART NO	DESCRIPTION	QTY	ITEM	PART NO	DESCRIPTION	QTY
1	193495 01	RX66 MAIN FRAME ASSY	1	38	HSS-0092	SETSCREW	1
2	191034 14	STRIPPER PLATE	2	39	WSH-0009	PLAIN WASHER	7
3	BLT-4710	COACH BOLT	32	40	NUT-0260	NYLOC NUT	7
4	NUT-0263	NUT	44	41	193480 01	SUPPORT BRACKET	1
5	WSH-0012	WASHER	44	42	192543 01	CROP DIVIDER ADJ.PLATE	2
6	191340 01	RUBBER SEAL	1	43	PIN-01790	LYNCH PIN & CHAIN	2
7	191339 01	CLAMP STRIP	2	44	193221 01	HEADER STAND BRACKET	1
8	POP-0006	POP RIVET	22	45	193222 01	HEADER FRONT STAND	2
9	193219 01	SKID	2	46	192550 01	NOSE ARM STOP PLATE	1
10	HSS-0316	SET SCREW	18	47			
11	WSH-0024	WASHER	8	48	192954 01	SKID ADJUSTER PLATE L.H	3
12	WSH-0070	WASHER	18	49	192954 02	SKID ADJUSTER PLATE R.H	3
13	NUT-0260	NUT	6	50	193218 01	SKID (CTR.)	1
14				51	193480 02	SUPPORT BRACKET LH	1
15	NUT-0269	NUT	4	52	193231 01	RUBBER SEAL	2
16	WSH-0018	WASHER	4	53	193229 01	SEAL CLAMP	2
17	191259 02	ADJ COWL SUPPORT ARM R.H	1	54	193230 01	SEAL CLAMP	2
18	191259 01	ADJ COWL SUPPORT ARM L.H	1	55	SCW-4960	BUTT.HD.SKT.SCREW	12
19	BSH-3030	BUSH	2	56	WSH-0056	SPRING WASHER	12
20	BSH-3070	BUSH	4	57	193244 01	RETAINING NUT	2
21	NIP-0001	GREASE ZERK	2	58	193248 01	RETAINING SCREW	2
22	WSH-1547	WASHER	2	59	BLTA12380	BOLT	2
23	CIR-1150	CIRCLIP	2	60	193251 01	RETAINING BAR	2
24	193506 01	HYDRAULIC RAM	2	61	NUT-0170	PLAIN NUT	2
24a	RMSK00030	SEAL KIT		62	193363 01	ROTOR DEFLECTOR	2
25	HSS-0260	SET SCREW	4	63	HSS-0084	SETSCREW	6
26	PIN-1150	SPLIT PIN	2	64			
27	192193 01	ADJ COWL STOP L.H	1				
28	192193 02	ADJ COWL STOP R.H	1				
29	HSS-0194	SET SCREW	7				
30	WSH-0015	WASHER	11				
31	NUT-0265	NUT	7				
32	192055 01	RUNNER ASSY L.H	1				
33	192055 02	RUNNER ASSY R.H	1				
34	SCW-1735	SCREW	6				
35	192304 01	AUGER END DEFLECTOR	2				
36	HSS-0140	SET SCREW	6				
37	192494 01	INDICATOR ROD	1				

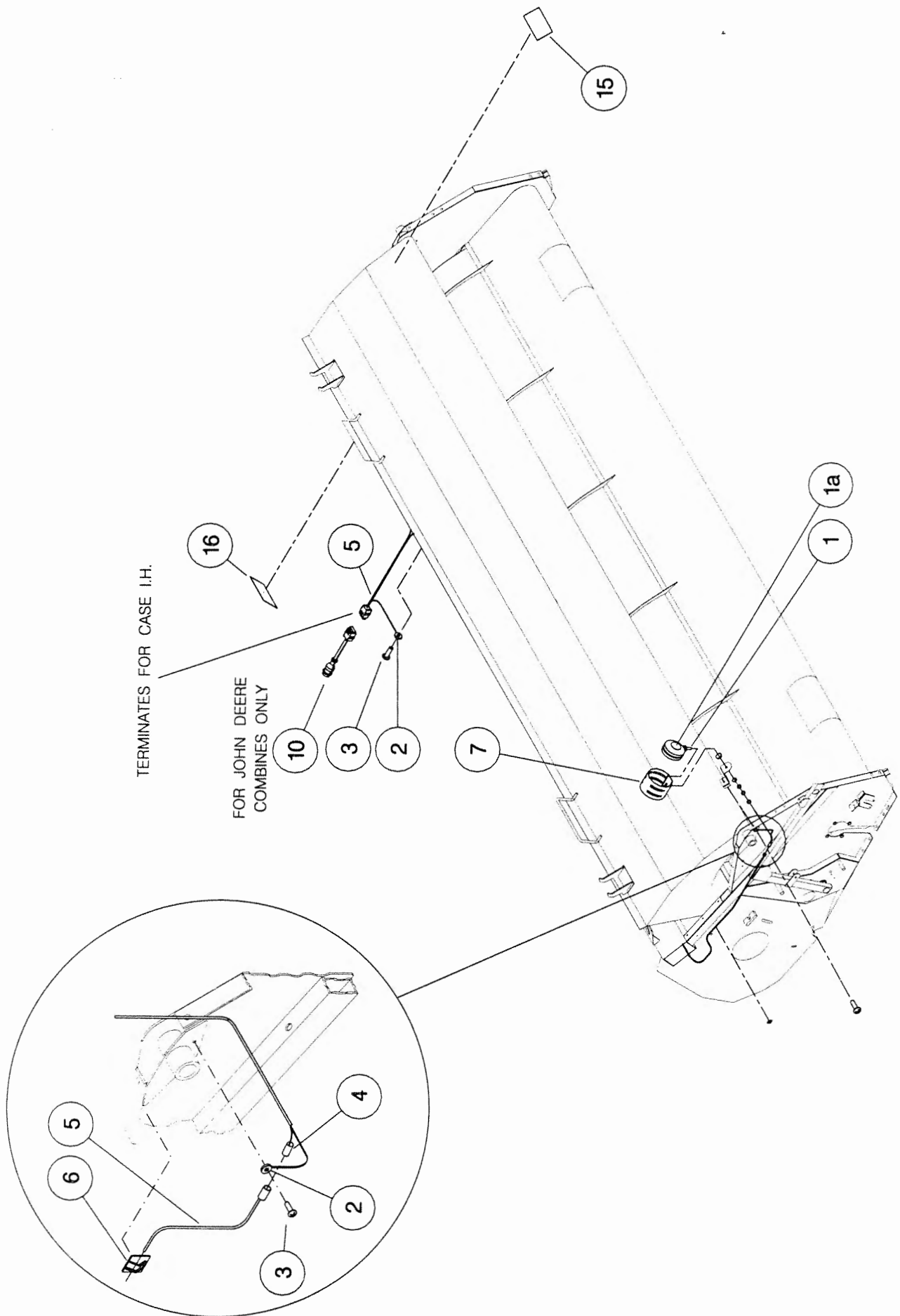




196142

**Shelbourne Reynolds Engineering Limited**

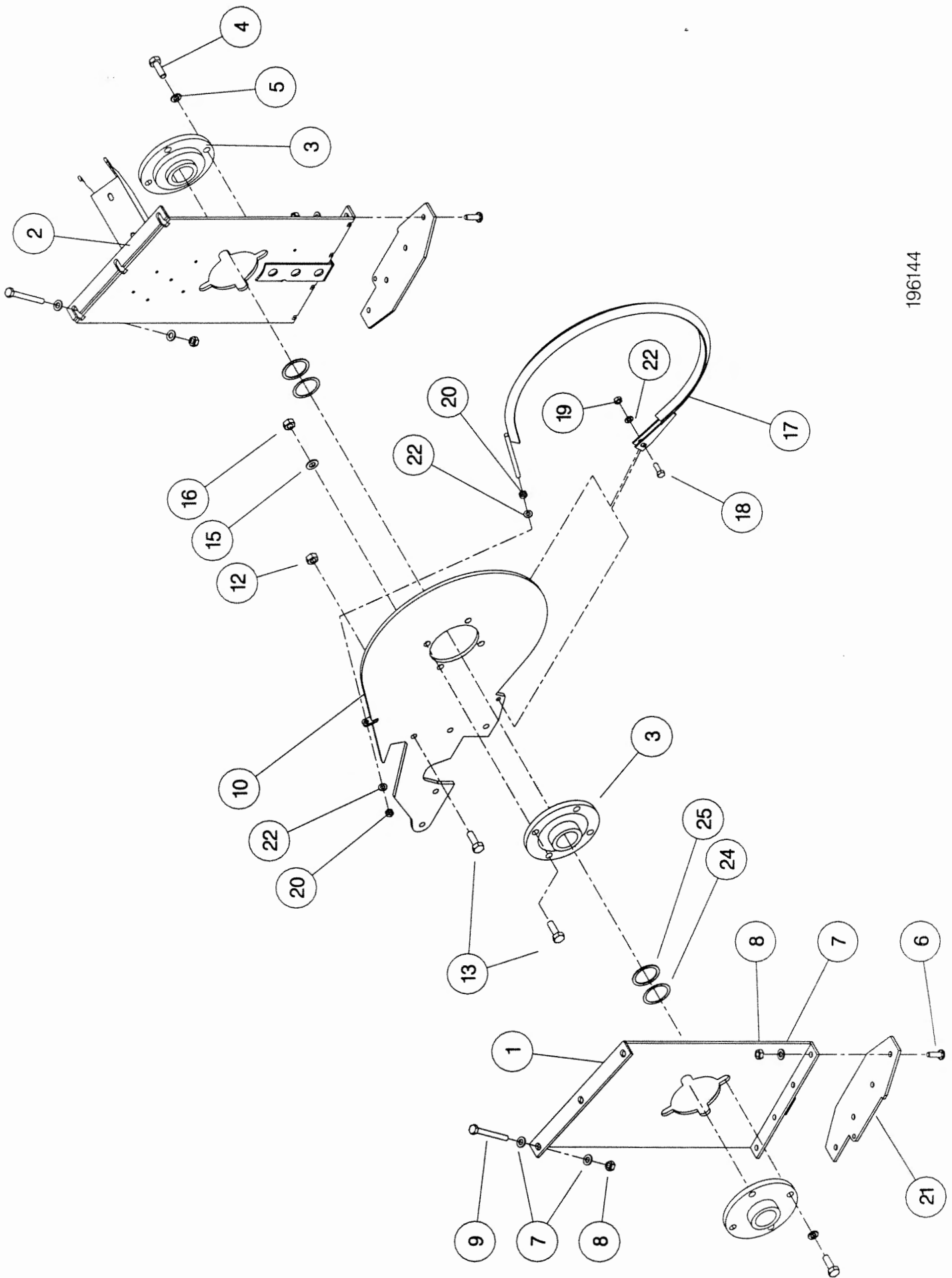
ASSY NUMBER:		196143 11	ASSY DESCRIPTION: HEADER LIGHTS SUB 6.6M				
ITEM	PART NO	DESCRIPTION	QTY	ITEM	PART NO	DESCRIPTION	QTY
1	LMP-10501	INDICATOR LIGHT ASSY	2				
1a	BLB-0075	BULB	2				
2	ETM-00440	LOOP TERMINAL	2				
3	SCW-5180	SELF TAP SCREW	3				
4	ETM-00560	MALE BULLET TERM.	2				
5	193512 01	WIRE LOOM & PLUG ASSY	1				
6	CFC-00500	FIXING CLIP	6				
7	193567 01	INDICATOR GUARD	2				
8							
9							
10	193516 01	LOOM & PLUG ASSY (JD ONLY)	1				
11							
12							
13							
14							
15	TPE-00250	REFLECTIVE TAPE - AMBER	0.1				
15	TPE-00250	REFLECTIVE TAPE - AMBER	0.1				
16	TPE-00251	REFLECTIVE TAPE - RED	0.1				
16	TPE-00251	REFLECTIVE TAPE - RED	0.1				



196143

**Shelbourne Reynolds Engineering Limited**

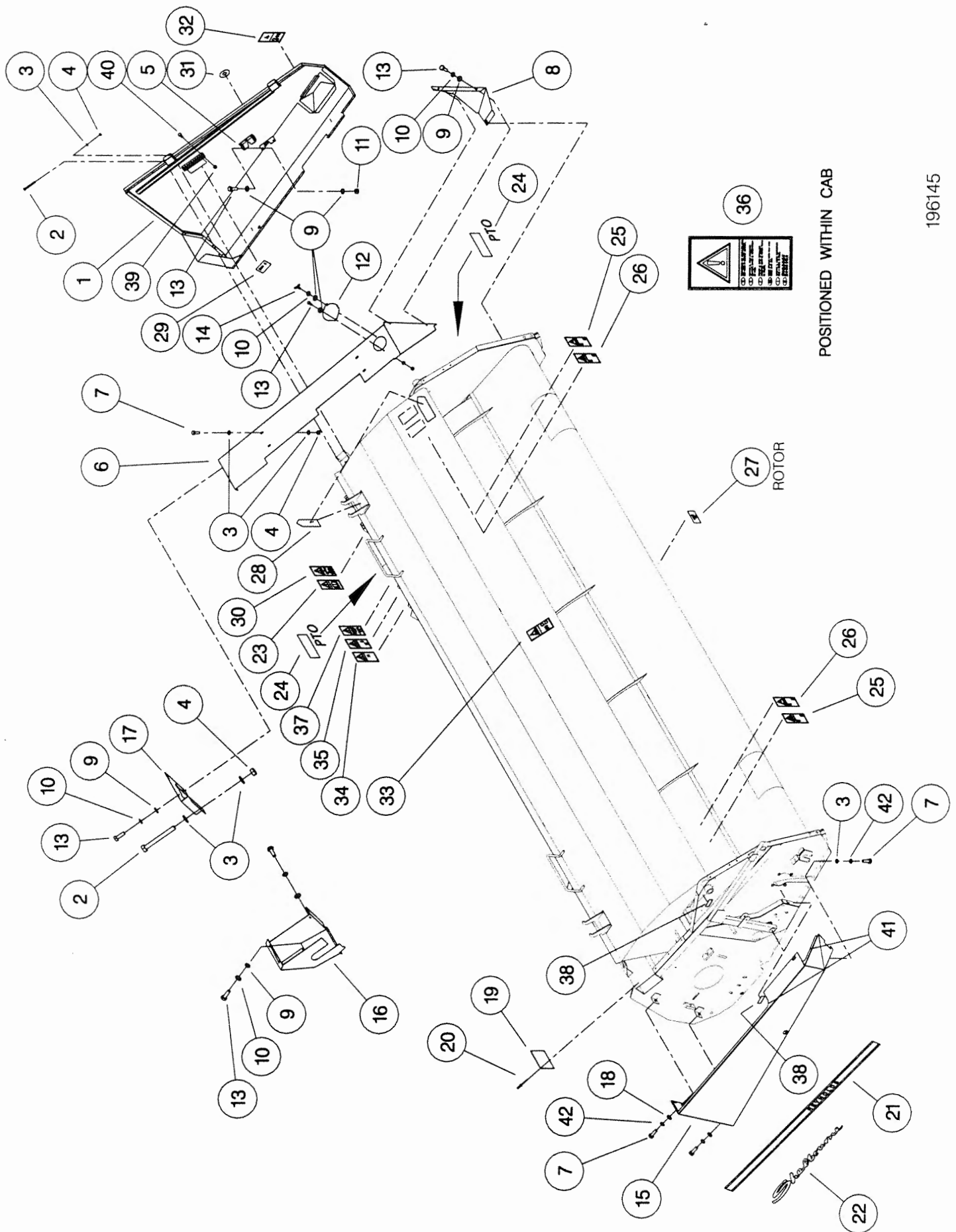
ASSY NUMBER: 196144 01				ASSY DESCRIPTION: RX ROTOR MTG SUB (1998)			
ITEM	PART NO	DESCRIPTION	QTY	ITEM	PART NO	DESCRIPTION	QTY
1	193504 01	ROTOR MTG PLATE R.H	1				
2	193295 01	ROTOR MTG PLATE L.H	1				
3	BRG-3275	BEARING	3				
4	HSS-0235	SETSCREW	8				
5	WSH-0065	WASHER	8				
6	SCW-0515	SCREW	8				
7	WSH-0015	WASHER	20				
8	NUT-0265	NUT	14				
9	BLTA10520	BOLT	6				
10	193291 01	DIVISION PLATE	1				
11							
12	NUTA07120	AERO-TIGHT NUT	5				
13	HSS-0241	SETSCREW	9				
14							
15	WSH-0018	WASHER	4				
16	NUT-0269	NUT	4				
17	192502 01	VEE STRIP ASSY	1				
18	HSS-0140	BOLT	1				
19	NUT-0263	NYLOC NUT	1				
20	NUT-0164	NUT PLAIN	2				
21	193220 01	DIVIDING PLATE	2				
22	WSH-0012	WASHER	3				
23							
24	192876 01	SHIM (1mm THICK)					
25	192876 02	SHIM (2mm THICK)					



196144

**Shelbourne Reynolds Engineering Limited**

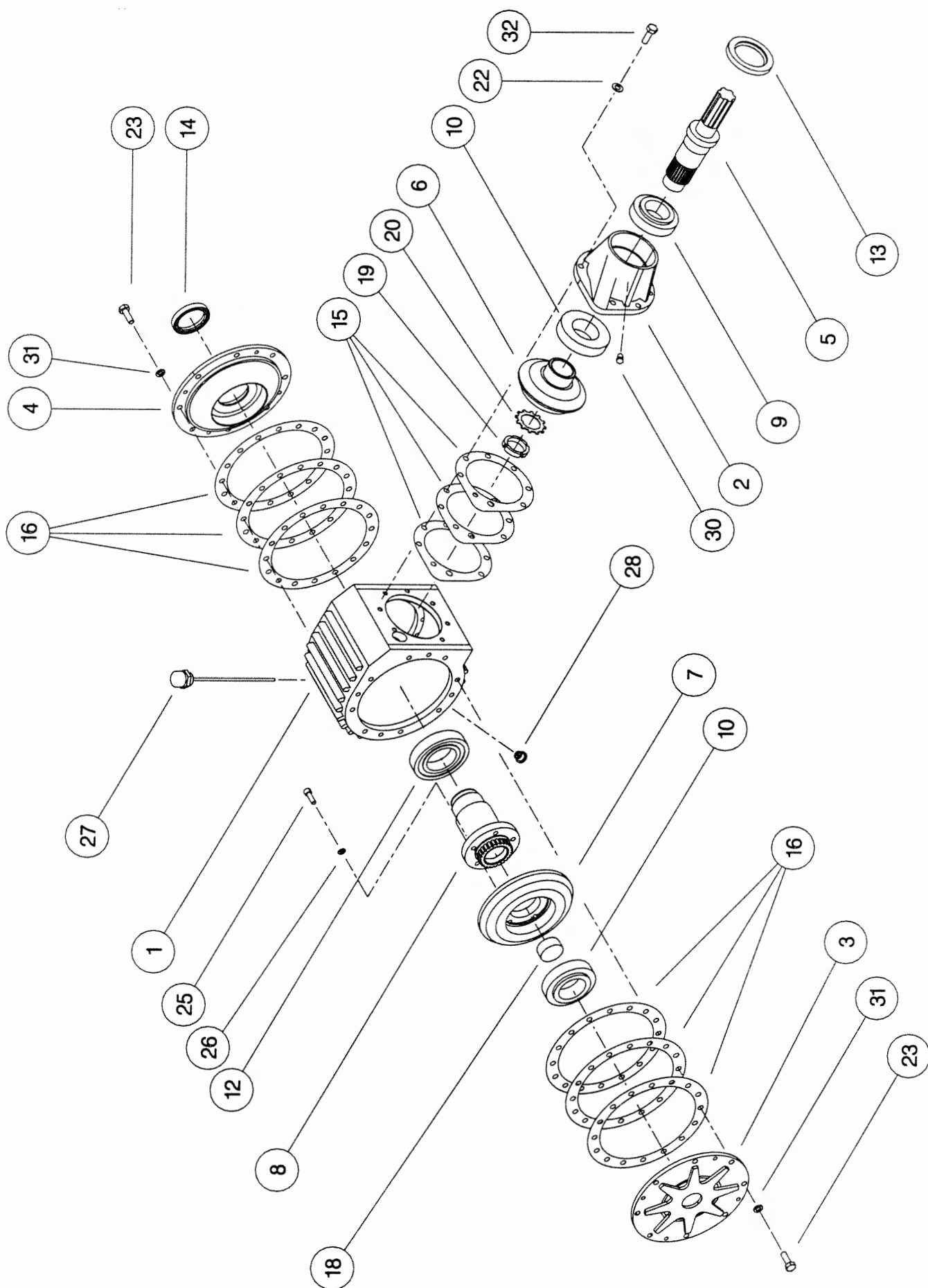
ASSY NUMBER: 196145 01				ASSY DESCRIPTION: RX EMBLEMS AND GUARDS SUB (1998)			
ITEM	PART NO	DESCRIPTION	QTY	ITEM	PART NO	DESCRIPTION	QTY
1	193299 01	L.H.GUARD	1	39	NUT-0164	NUT	10
2	BLTA08470	BOLT	3	40	BLTA08350	SHEARBOLT	10
3	WSH-0012	PLAIN WASHER	12	41	EDS-11400	EDGING STRIP	1.5
4	NUT-0263	NYLOC NUT	8	42	WSH-0058	WASHER	4
5	LTC-00040	SLAM LATCH	1				
6	193297 01	L.H. TOP COVER	1				
7	HSS-0140	SET SCREW	9				
8	192570 01	FRONT DEFLECTOR L.H.	1				
9	WSH-0009	PLAIN WASHER	10				
10	WSH-0056	SPRING WASHER	8				
11	NUT-0260	NYLOC NUT	3				
12	191355 01	COVER	1				
13	HSS-0084	SET SCREW	12				
14	SCW-4700	WING SCREW	1				
15	193478 01	R.H.GUARD	1				
16	192555 01	REAR DRIVE GUARD	1				
17	193009 01	REAR UPPER GUARD	1				
18	WSH-1038	PENNY WASHER	3				
19	191359 01	IDENTIFICATION PLATE	1				
20	POP-0006	POP RIVET	4				
21	191983 01	EMBLEM (STRIPES & REYNOLDS)	2				
22	191982 01	EMBLEM (SHELBOURNE)	2				
23	610257 01	EMBLEM (READ MANUAL)	1				
24	127075 12	EMBLEM (GREASE 10 HOURS)	2				
25	193388 01	EMBLEM (FLYING OBJECTS)	2				
26	193389 01	EMBLEM (KEEP AWAY)	2				
27	193395 01	EMBLEM (TENSILOCK)	4				
28	190702 04	EMBLEM (SLING POINT)	4				
29	192839 01	EMBLEM (SHEARBOLT PART No.)	1				
30	610250 01	EMBLEM (SAFETY MAINTENANCE)	1				
31	192953 01	EMBLEM (1/4 TURN)	1				
32	193392 01	EMBLEM (STOP ENG BEFORE...)	1				
33	193393 01	EMBLEM (STOP ENG BEFORE...)	1				
34	193390 01	EMBLEM (DONT HANG CHAIN)	1				
35	193391 01	EMBLEM (PTO GUARD)	1				
36	193394 01	EMBLEM (ENGAGE STRIP ROTOR)	1				
37	193387 01	EMBLEM (AUGER/ROTOR SPEED)	1				
38	127075 16	EMBLEM (GREASE 50 HOURS)	6				



**Shelbourne Reynolds Engineering Limited**

ASSY NUMBER:		ASSY DESCRIPTION: BEVEL GEARBOX (1.5:1)					
ITEM	PART NO	DESCRIPTION	QTY	ITEM	PART NO	DESCRIPTION	QTY
1	191715 01	GEARBOX CASING	1				
2	191716 01	INPUT HOUSING	1				
3	191717 01	OUTSIDE END COVER	1				
4	191718 01	INSIDE END COVER	1				
5	191719 01	INPUT SHAFT (17T INVOLUTE)	1				
or	191819 01	INPUT SHAFT (28T INVOLUTE)	1				
6	191720 01	BEVEL GEAR 20T (17T INV)	1				
or	191798 01	BEVEL GEAR 20T (28T INV)	1				
7	191721 01	BEVEL GEAR 30T (26T INV)	1				
or	191799 01	BEVEL GEAR 30T (25T INV)	1				
8	191722 01	OUTPUT SHAFT (26T INVOLUTE)	1				
or	191800 01	OUTPUT SHAFT (25T INVOLUTE)	1				
9	BRG-7000	BEARING	1				
10	BRG-7020	BEARING	2				
11							
12	BRG-7040	BEARING	1				
13	SEA-0590	ROTARY SHAFT SEAL	1				
14	SEA-0600	ROTARY SHAFT SEAL	1				
15	191812	SHIM PACK (INPUT)	1				
16	191813	SHIM PACK (ENDS)	2				
17							
18	191735 01	SHAFT PLUG	1				
19	NUT-3010	LOCK RING	1				
20	WSH-6010	LOCK WASHER	1				
21							
22	WSH-1096	SHAKEPROOF WASHER	7				
23	HSS-1054	SET SCREW	23				
24							
25	SCW-0139	CAP HEAD SCREW	5				
26	WSH-0058	SPRING WASHER	5				
27	FIT-0254	BREATHER/DIP STICK	1				
28	FIT-0253	MAGNETIC DRAIN PLUG	1				
29							
30	FIT-0223	TAPER PLUG	1				
31	WSH-1145	SPRING WASHER	16				

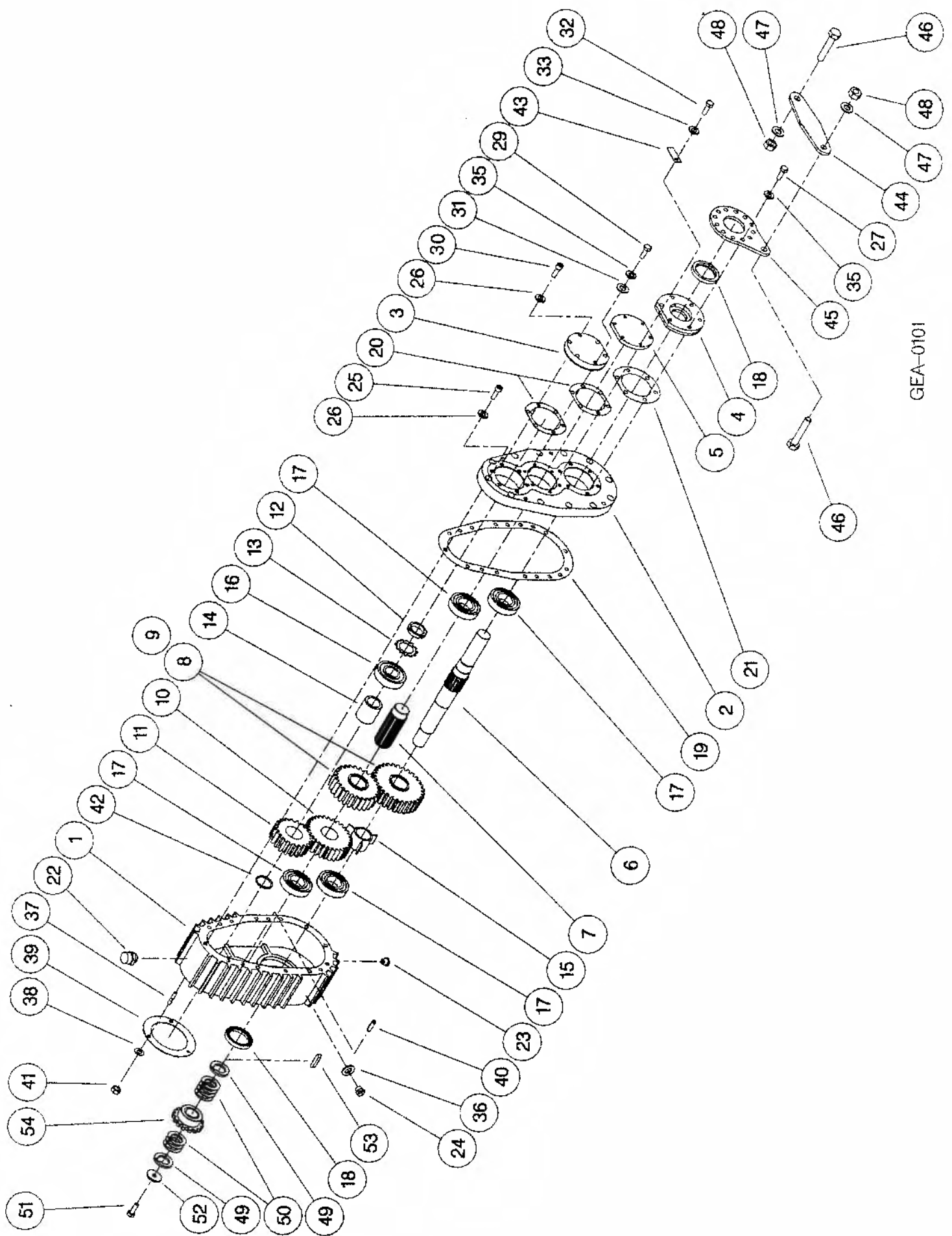




GEA-0095

**Shelbourne Reynolds Engineering Limited**

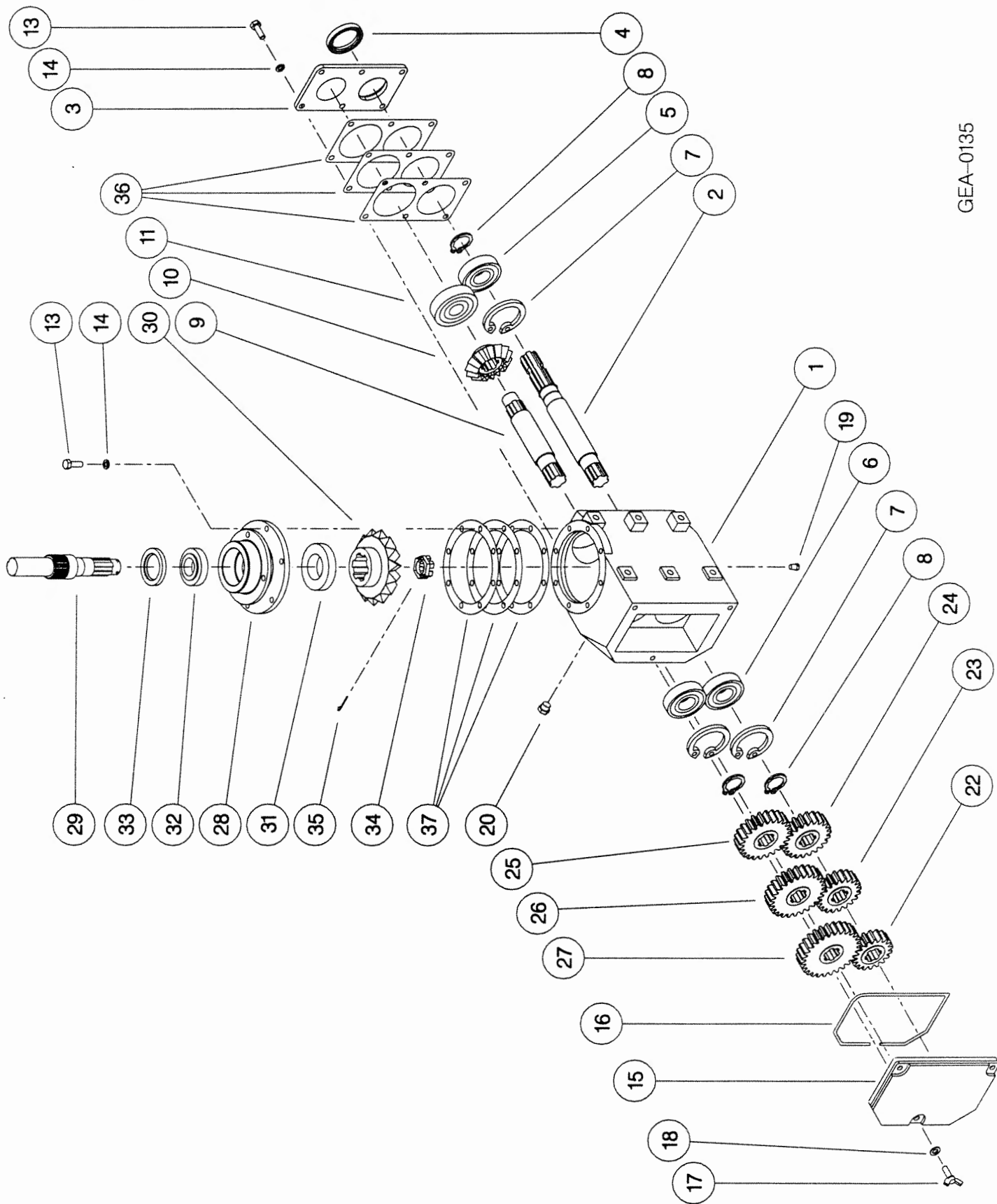
ASSY NUMBER:		ASSY DESCRIPTION: SHORT DROPBOX FOR RX & CX (1996)					
ITEM	PART NO	DESCRIPTION	QTY	ITEM	PART NO	DESCRIPTION	QTY
1	191723 01	GEARCASE	1	38	WSH-0012	PLAIN WASHER	3
2	191723 02	LID	1	39	191759 01	SEAL	1
3	191696 01	OUTPUT END CAP	1	40	191765 01	DOWL	2
4	191694 01	INPUT FLANGE	1	41	NUT-0263	NYLOC NUT	3
5	191693 01	END CAP	1	42	CIR-4000	SNAP RING CIRCLIP	1
6	191807 01	INPUT/AUGER OUTPUT SHAFT (28T INVOLUTE)	1	43	191928 01	IDENTIFICATION TAG	1
7	191801 01	INTERMED. SHAFT (28T INV)	1	44	193097 01	FIXED LINK	1
8	*	CHANGE GEAR (SEE DRIVE SUB)		45	191687 01	LINK BRACKET	1
9	*	CHANGE GEAR (SEE DRIVE SUB)		46	HSS-0316	SET SCREW	2
10	191803 01	SPUR GEAR 30T (28T INV)	1	47	WSH-0024	WASHER	2
11	191884 01	SPUR GEAR 20T (28T INV)	1	48	NUT-0271	NUT	2
12	NUT-3000	LOCK RING	1	49	191692 01	SPACER	2
13	WSH-6000	LOCK WASHER	1	50	191692 02	SHIM	7
14	191725 01	SPACER	1	51	HSSF10174	SET SCREW	1
15	191894 01	SPACER	1	52	190548 01	PLAIN WASHER	1
16	BRG-6600	BEARING	1	53	K1008045	KEY	1
17	BRG-5800	BEARING	4	54	*	AUGER SPROCKET (SEE DRIVE SUB)	
18	SEA-0610	ROTARY SHAFT SEAL	2				
19	191756 01	GASKET	1				
20	191757	SEAL PACK	2				
21	191758	SEAL PACK	1				
22	FIT-0255	BREATHER	1				
23	FIT-0253	MAGNETIC DRAIN PLUG1					
24	FIT-0251	LEVEL PLUG	1				
25	SCW-0196	CAP HEAD SCREW	12				
26	WSH-1301	SHAKEPROOF WASHER	15				
27	HSS-0202	SETSCREW	6				
28							
29	BLTA10290	BOLT	3				
30	SCW-0190	CAP HEAD SCREW	3				
31	WSH-0015	PLAIN WASHER	3				
32	HSS-0145	SET SCREW	6				
33	WSH-1300	SHAKEPROOF WASHER	6				
34							
35	WSH-0061	SPRING WASHER	9				
36	WSH-1010	DOWTY WASHER	1				
37	191737 01	STUD	3				



GEA-0101

**Shelbourne Reynolds Engineering Limited**

ASSY NUMBER:		ASSY DESCRIPTION: 5 SPEED G.BOX ASSY ALUM/FINNEED 1997 (WITH DROP BOX)					
ITEM	PART NO	DESCRIPTION	QTY	ITEM	PART NO	DESCRIPTION	QTY
1	191821 01	GEARBOX CASING	1				
2	191829 01	INPUT SHAFT	1				
3	191825 01	SEAL HOUSING	1				
4	SEA-0550	ROTARY SHAFT SEAL	1				
5	BRG-6600	BEARING	1				
6	BRG-6601	BEARING	2				
7	CIR-3800	CIRCLIP	3				
8	CIR-2700	CIRCLIP	3				
9	191828 01	LAYSHAFT	1				
10	191823 01	BEVEL GEAR (15T)	1				
11	BRG-6800	BEARING	1				
12							
13	HSS-0194	SET SCREW	14				
14	WSH-0061	SPRING WASHER	14				
15	192924 01	REMOVABLE COVER	1				
16	ORA260000	'O' RING SEAL STRIP	0.7				
17	SCW-4760	WING SCREW	3				
18	WSH-1301	SHAKEPROOF WASHER	3				
19	FIT-0223	PLUG	1				
20	FIT-0218	BREATHER	1				
21							
22	191822 18	CHANGE GEAR (18T)	1				
23	191822 20	CHANGE GEAR (20T)	1				
24	191822 22	CHANGE GEAR (22T)	1				
25	191822 24	CHANGE GEAR (24T)	1				
26	191822 26	CHANGE GEAR (26T)	1				
27	191822 28	CHANGE GEAR (28T)	1				
28	191691 02	OUTPUT HOUSING (HOLES,1997)	1				
29	191885 01	OUTPUT SHAFT	1				
30	191824 01	BEVEL GEAR (18T)	1				
31	BRG-6000	BEARING	1				
32	BRG-5700	BEARING	1				
33	SEA-0565	ROTARY SHAFT SEAL	1				
34	191843 01	SLOTTED NUT	1				
35	PIN-1168	SPLIT PIN	1				
36	191830	GASKET SET	1				
37	191831	GASKET SET	1				



GEA-0135

**Shelbourne Reynolds Engineering Limited**

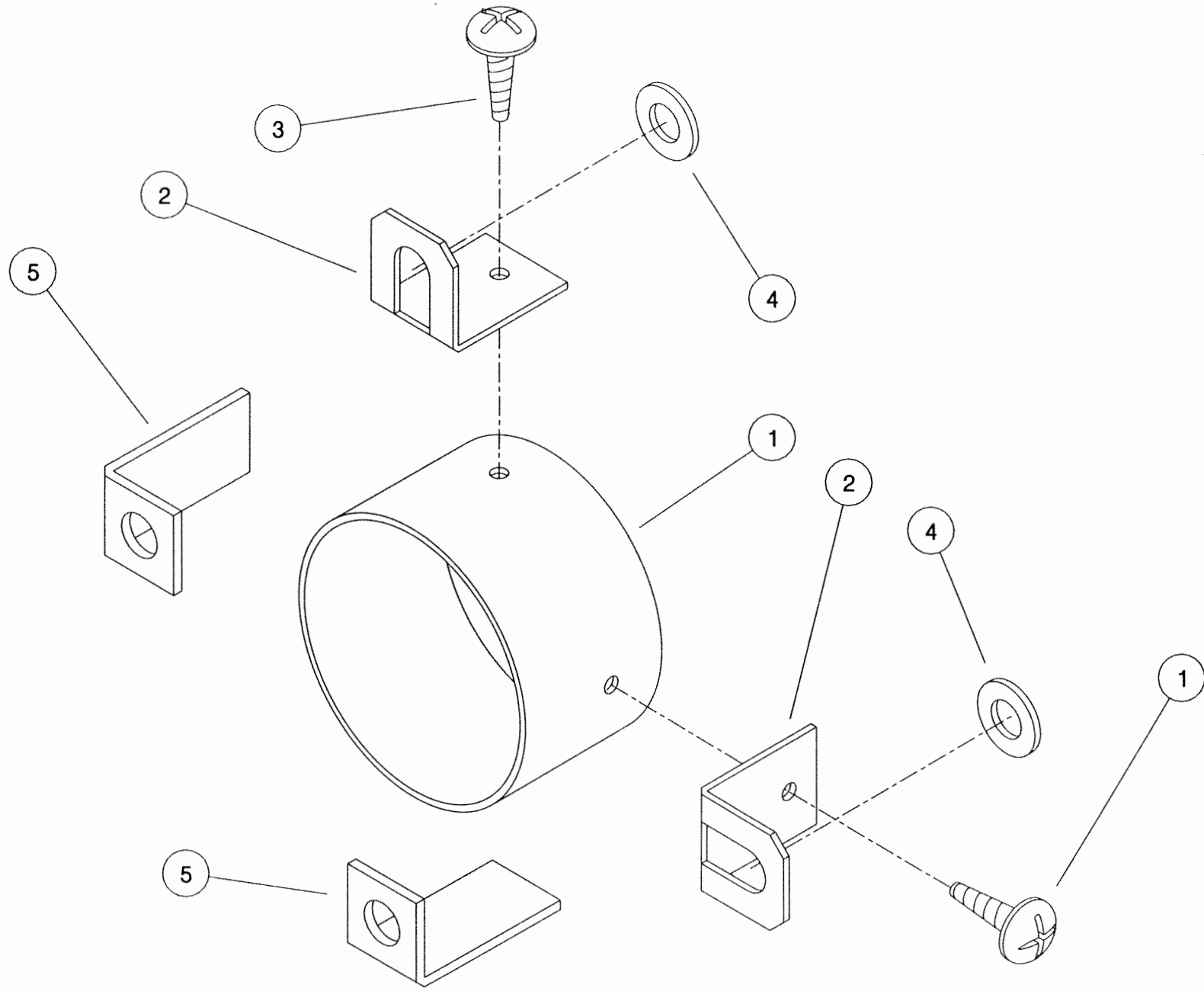
ASSY NUMBER:		KIT-00115		ASSY DESCRIPTION:		AUGER DRIVE SPROCKET/CLUTCH ASSY	
ITEM	PART NO	DESCRIPTION	QTY	ITEM	PART NO	DESCRIPTION	QTY
1	192763 05	SPROCKET ASSY 50T	1				
2	BSH-3019	BUSH	1				
3	192008 01	THRUST WASHER	1				
4	192013 01	CLUTCH HUB	1				
5	131005	CLUTCH PLATE	2				
6	192014 01	DRIVE DISC	1				
7	131073 03	SPACER	6				
8	131063	SPRING	6				
9	192009 01	FIXING RING	1				
10	BLTF12563	COACH BOLT	6				
11	WSH-0018	PLAIN WASHER	6				
12	NUT-0370	HALF NUT	12				
13	192254 01	SPROCKET 50T	1				
14	192253 02	SPACER	4				
15	190119 11	WASHER	8				
16	BLTA10440	BOLT	4				
17	NUT-0265	NYLOC NUT	4				



**Shelbourne Reynolds Engineering Limited**

ASSY NUMBER: KIT-00525				ASSY DESCRIPTION: PTO END GUARD			
ITEM	PART NO	DESCRIPTION	QTY	ITEM	PART NO	DESCRIPTION	QTY
1	192985 06	GUARD TUBE	1				
2	192992 01	GUARD SECURING BRACKET	2				
3	SCW-5104	SCREW	2				
4	WSH-0015	WASHER	2				
5	191763 01	PTO BRACKET	2				



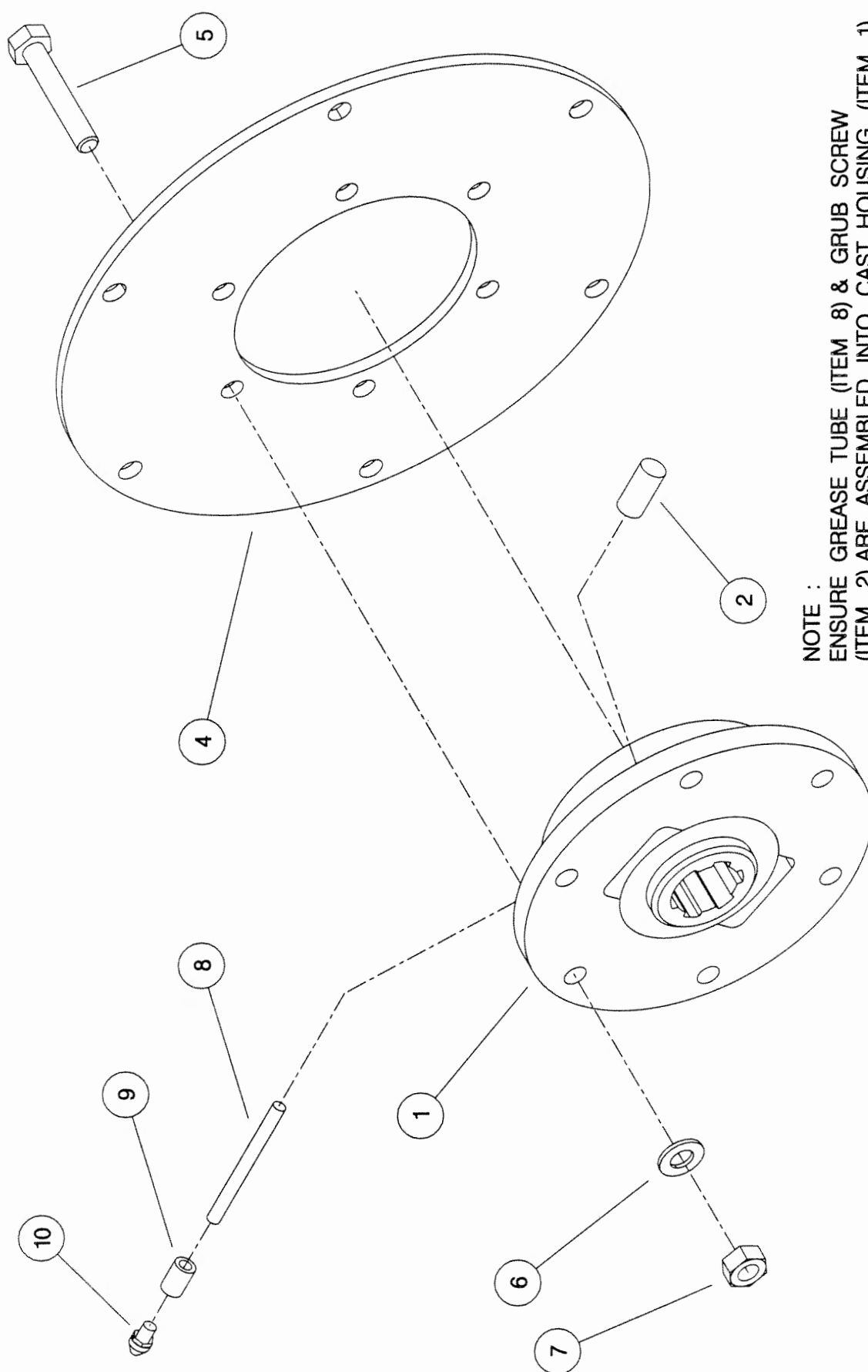


THIS KIT FIXES TO :  
R.X HEADERS - DIRECTLY ON TO DROP BOX ASSY.  
C.X HEADERS - ON TO REAR SHAFT SUPPORT BEARING PLATE.

KIT-00525

**Shelbourne Reynolds Engineering Limited**

ASSY NUMBER:		KIT-00976		SUB ASSY DESCRIPTION: BALL JOINT COUPLING (CAST ROTOR)			
ITEM	PART NO	DESCRIPTION	QTY	ITEM	PART NO	DESCRIPTION	QTY
1	193114 01	SPLINED BALL	1				
2	SCW-4530	GRUB SCREW	1				
3							
4	193106 01	DRIVE RING PLATE	1				
5	HSS-0198	SETSCREW	6				
6	WSH-0015	WASHER	6				
7	NUT-0265	NUT	6				
8	193077 01	GREASE TUBE	1				
9	193078 01	GREASE TUBE ADAPTOR	1				
10	NIP-00600	GREASE NIPPLE	1				

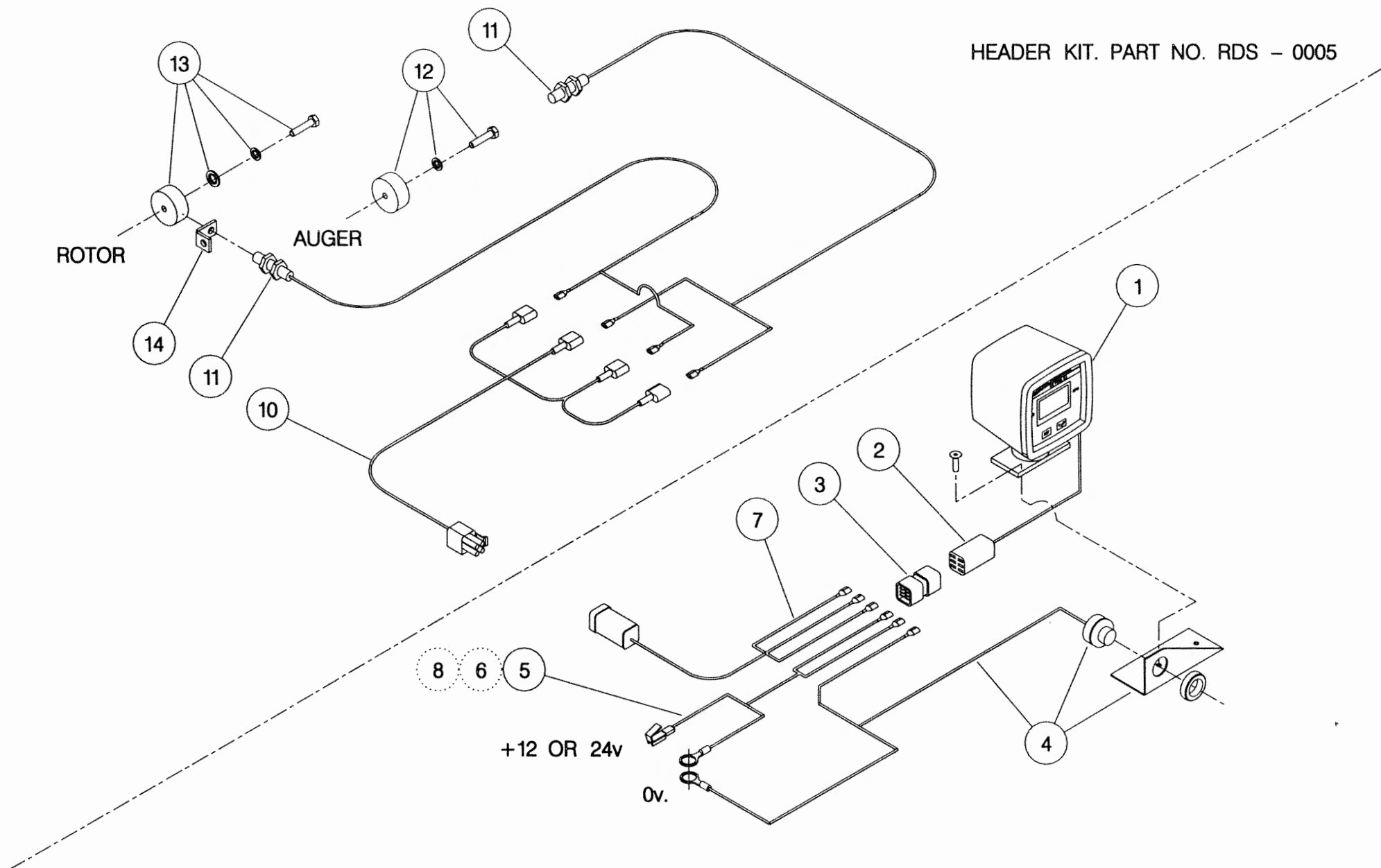


NOTE :  
 ENSURE GREASE TUBE (ITEM 8) & GRUB SCREW  
 (ITEM 2) ARE ASSEMBLED INTO CAST HOUSING (ITEM 1)  
 THE ORIENTATION SHOWN IS FOR A R.H. ROTOR  
 OPPOSITE ORIENTATION FOR L.H. ROTOR.

KIT - 00976

**Shelbourne Reynolds Engineering Limited**

ASSY NUMBER: RDS-0001/RDS-0005				ASSY DESCRIPTION: TACHO KIT			
ITEM	PART NO	DESCRIPTION	QTY	ITEM	PART NO	DESCRIPTION	QTY
1	RDS-0010	TACHO HEAD COMPLETE	1	13	RDS-0020	MAGNET CARRIER ,	1
2	RDS-0011	TACHO HEAD PLUG & ARMS	1			SET SCREW ,	1
3	RDS-0012	HARTING CONNECTOR &	1			PENNY WASHER &	1
		STICKER	1			SPRING WASHER	1
4	RDS-0013	AUDIBLE ALARM,	1	14	RDS-0021	ROTOR SENSOR BRACKET	1
		FIXING BRACKET &	1				
		SELF TAP.SCREWS	2				
5	RDS-0014	POWER CONNECTION LEAD	1				
6	FUS-0022	FUSE	1				
7	RDS-0015	COMBINE LEAD	1				
8	RDS-0016	24V-12V CONVERTER KIT (NOT INCLUDED IN RDS-0001)	1				
9							
10	RDS-0017	HEADER LEAD	1				
11	RDS-0018	SHAFT SENSOR	2				
12	RDS-0019	MAGNET ,	1				
		TAPTITE BOLT &	1				
		FIBRE WASHER	1				



COMBINE KIT. PART NO. RDS - 0001

NOTE ;

ITEM 6 IS USED IF POWER SUPPLY IS NOT FUSED.

ITEM 8 IS USED IF POWER SUPPLY IS 24v, -VE EARTH. (NOT INCLUDED IN RDS - 0001).

ITEM 4 (ALARM ) IS BUILT INTO ITEM 1 (TACHO HEAD ) ON LATER MODELS.



# **NUMERIC PARTS LIST**

<b>PART No.</b>	<b>PAGE</b>	<b>PART No.</b>	<b>PAGE</b>	<b>PART No.</b>	<b>PAGE</b>
127075 12	36	191774 01	8	192227 01	28
127075 16	36		18	192227 02	28
131005	44	191777 01	8	192253 02	44
131014 01	8		18	192254 01	44
131041 01	18	191798 01	38	192258 01	8
131063	44	191799 01	38	192263 01	8
131073 03	44	191800 01	38	192265 01	8
190060 06	8	191801 01	40	192266 01	22
	18	191803 01	40	192273 01	22
190119 04	18	191807 01	40	192274 01	22
190119 05	6	191812	38	192289 01	22
190119 11	44	191813	38	192304 01	30
190361 01	6	191819 01	38	192344 01	8
190548 01	40	191821 01	42	192354 01	22
190702 04	36	191822 18	42	192355 01	22
191034 14	30	191822 20	42	192363 06	28
191040 01	8	191822 22	42	192364 01	28
	18	191822 24	42	192368 01	28
191259 01	30	191822 26	42	192494 01	30
191259 02	30	191822 28	42	192502 01	34
191339 01	30	191823 01	42	192524 08	6
191340 01	30	191824 01	42	192533 01	10
191355 01	36	191825 01	42	192533 02	10
191359 01	36	191828 01	42	192537 01	10
191642 01	6	191829 01	42	192537 02	10
191652 01	18	191830	42	192543 01	30
191680 01	18	191831	42	192550 01	30
191687 01	40	191843 01	42	192555 01	36
191691 02	42	191862 01	10	192570 01	36
191692 01	40	191865 01	14	192636 01	16
191692 02	40	191865 02	13	192636 06	16
191693 01	40	191884 01	40	192679 01	13
191694 01	40	191885 01	42		14
191696 01	40	191894 01	40	192718 01	6
191715 01	38	191928 01	40		20
191716 01	38	191981 01	6	192729 01	6
191717 01	38	191982 01	36	192732 01	22
191718 01	38	191983 01	36	192738 01	22
191723 01	40	192008 01	44	192738 02	22
191723 02	40	192009 01	44	192763 05	44
191725 01	40	192011 01	28	192812 01	20
191735 01	38	192013 01	44	192813 01	20
191737 01	40	192014 01	44	192839 01	36
191756 01	40	192037 01	6	192876 01	34
191757	40	192038 01	6	192876 02	34
191758	40	192055 01	30	192890 02	13
191759 01	40	192055 02	30	192890 03	14
191763 01	46	192091 01	18	192892 01	13
191765 01	40	192193 01	30		14
191770 01	10	192193 02	30	192892 02	14





# NUMERIC PARTS LIST

PART No.	PAGE	PART No.	PAGE	PART No.	PAGE
192892 02	13	193363 01	30	BRG-1994	8
192892 03	13	193382 01	13	BRG-1995	8
	14		14		18
192897 01	14	193387 01	36		22
192899 01	13	193388 01	36	BRG-2020	28
192924 01	42	193389 01	36	BRG-22500	8
192953 01	36	193390 01	36	BRG-3275	34
192954 01	30	193391 01	36	BRG-5700	42
192954 02	30	193392 01	36	BRG-5800	40
192959 01	13	193393 01	36	BRG-6000	42
	14	193395 01	36	BRG-6600	40
192969 01	22	193478 01	36		42
192970 01	22	193480 01	30	BRG-6601	42
192970 02	22	193480 02	30	BRG-6800	42
192985 06	46	193495 01	30	BRG-7000	38
192992 01	46	193500 01	28	BRG-7020	38
193009 01	36	193504 01	34	BRG-7040	38
193077 01	48	193506 01	30	BSH-1530	18
193078 01	48	193512 01	32		22
193097 01	40	193567 01	32	BSH-3030	20
193103 01	14	200035 03	16		30
193106 01	48	200038 01	16	BSH-3070	30
193114 01	48	200120 03	16	BSHZ02553	8
193117 02	13	610250 01	36	CFC-00500	32
193118 01	13	610257 01	36	CHN-01682	8
	14	AUG-02500	28	CIR-0470	8
193118 02	13	BLB-0075	32		18
	14	BLT-2316	8	CIR-1125	8
193203 01	28		18	CIR-1150	30
193218 01	30	BLT-3745	16	CIR-2700	42
193219 01	30	BLT-3790	16	CIR-3800	42
193220 01	34	BLT-4710	30	CIR-4000	40
193221 01	30	BLTA06320	22	CLP-01012	26
193222 01	30	BLTA06470	22	EDS-11400	36
193229 01	30	BLTA08350	36	EDS-11600	20
193230 01	30	BLTA08470	36	ETM-00440	32
193231 01	30	BLTA08500	22	ETM-00560	32
193244 01	30	BLTA08530	22	FIT-0213	26
193248 01	30	BLTA10290	20	FIT-0218	42
193251 01	30		40	FIT-0223	38
193288 01	20	BLTA10350	22		42
193291 01	34	BLTA10440	44	FIT-0251	40
193293 01	22	BLTA10520	34	FIT-0253	38
193295 01	34	BLTA10530	22		40
193297 01	36	BLTA12290	18	FIT-0254	38
193299 01	36	BLTA12380	30	FIT-0255	40
193310 01	22	BLTF12563	44	GEA-0095	18
193312 01	22	BPG-00200	13	GEA-0101	18
193348 01	24	BRG-0240	16	GEA-0135	18
193348 02	24		28	GSTA14406	20



# NUMERIC PARTS LIST

PART No.	PAGE	PART No.	PAGE	PART No.	PAGE
HHBC31610.....	26	LMP-10501 .....	32	PIN-1150 .....	30
HHBC56610.....	26	LTC-00040 .....	36	PIN-1168 .....	42
HPPD07100.....	26	NIP-0001 .....	20	POP-0006 .....	6
HSS-0084 .....	22	.....	30	.....	30
.....	22	NIP-00600 .....	48	.....	36
.....	30	NUT-0164 .....	34	PSP-01201 .....	22
.....	36	.....	36	PSP-01800 .....	22
HSS-0086 .....	8	NUT-0170 .....	16	PTO-09010 .....	18
.....	26	.....	30	SCBA08172 .....	28
HSS-0092 .....	30	NUT-0260 .....	8	SCCA10412 .....	28
HSS-0140 .....	6	.....	22	SCW-0139 .....	38
.....	30	.....	26	SCW-0190 .....	38
.....	34	.....	28	.....	40
.....	36	.....	30	SCW-0196 .....	40
HSS-0145 .....	40	.....	30	SCW-0515 .....	34
HSS-0155 .....	10	.....	36	SCW-1735 .....	30
HSS-0191 .....	10	NUT-0263 .....	22	SCW-4530 .....	48
.....	22	.....	28	SCW-4535 .....	16
.....	28	.....	30	SCW-4700 .....	36
.....	38	.....	34	SCW-4760 .....	42
HSS-0194 .....	18	.....	36	SCW-4960 .....	28
.....	30	.....	40	.....	30
.....	42	NUT-0265 .....	10	SCW-5104 .....	46
HSS-0198 .....	48	.....	16	SCW-5180 .....	13
HSS-0202 .....	40	.....	18	.....	14
HSS-0235 .....	34	.....	20	.....	26
HSS-0238 .....	18	.....	22	.....	32
HSS-0241 .....	16	.....	28	SEA-0550 .....	42
.....	34	.....	30	SEA-0565 .....	42
HSS-0260 .....	30	.....	34	SEA-0590 .....	38
HSS-0265 .....	22	.....	44	SEA-0600 .....	38
HSS-0315 .....	22	.....	48	SEA-0610 .....	40
HSS-0316 .....	30	NUT-0269 .....	8	SPGA32221 .....	22
.....	40	.....	16	TPE-00250 .....	32
HSS-0318 .....	8	.....	18	.....	32
HSSA10680.....	22	.....	22	TPE-00251 .....	32
HSSF08174 .....	13	.....	30	.....	32
.....	14	.....	34	WSH-0009 .....	8
HSSF10174 .....	40	NUT-0271 .....	8	.....	22
HSSF12204 .....	28	.....	18	.....	26
HSSG10204.....	13	.....	40	.....	28
.....	14	NUT-0370 .....	44	.....	30
HSSG12174.....	18	NUT-0580 .....	16	.....	36
K0807035 .....	8	NUT-3000 .....	40	WSH-0012 .....	22
K0807050 .....	16	NUT-3010 .....	38	.....	28
K0807060 .....	16	NUTA07120 .....	34	.....	30
K1008045 .....	40	ORA260000 .....	42	.....	34
KIT-00115 .....	16	PFS-00500 .....	26	.....	36
KIT-00525 .....	18	PIN-01790 .....	30	.....	40
KIT-00976 .....	13	PIN-1150 .....	16	WSH-0015 .....	40



# NUMERIC PARTS LIST

PART No.	PAGE
WSH-0015	10
	16
	18
	20
	22
	28
	30
	34
	46
	48
WSH-0018	8
	16
	18
	22
	30
	34
	44
WSH-0024	8
	18
	22
	30
	40
WSH-0030	16
WSH-0056	22
	28
	30
	36
WSH-0058	6
	10
	28
	36
	38
WSH-0061	20
	22
	28
	38
	40
	42
WSH-0065	18
	34
WSH-0070	8
	22
	30
WSH-1010	40
WSH-1034	13
	14
WSH-1038	36
WSH-1300	40
WSH-1301	38
	40

PART No.	PAGE
----------	------

PART No.	PAGE
----------	------

