

RX66 Shelbourne Header

PARTS MANUAL

Shelbourne
REYNOLDS

Shelbourne Reynolds Engineering Ltd

Stanton

Bury St Edmunds

Suffolk IP31 2AR

England

Telephone: 01359 250415

Fax. No: 01359 250464

(Stores direct 01359 251231)

(Stores direct 01359 252031)



INVESTOR IN PEOPLE

SHELBOURNE HEADER PARTS MANUAL

Your *Shelbourne* Header is designed to fit many different types of combine.

For this reason the machine number index is broken down into sections for identification. Your serial and machine numbers are listed below:

SHELBOURNE HEADER SERIAL NUMBER _____

SHELBOURNE HEADER MACHINE NUMBER _____

ADAPTOR PLATE ASSEMBLY _____

DRIVE KIT _____

HYDRAULIC FITTING KIT _____

OTHER KIT OPTIONS _____

This manual contains all parts common to the *Shelbourne* Header and is used in conjunction with the combine fittings manual, which contains the adaptor plate, and drive kit parts and fitting, and any other options available.

MACHINE IDENTIFICATION

The *Shelbourne* Header machine identification number is engraved on a plate on the top right hand corner of the header.

The adaptor plate has a plate on the top right hand corner also with the adaptor plate assembly number engraved on it.

The drive kit can be identified by description, and use of the drive kit identification number marked above.

ORDERING SPARE PARTS

To ensure that you order the correct part from your SRE dealer please use the following procedure.

ALWAYS QUOTE THE MACHINE AND SERIAL NUMBERS WHEN ORDERING.

Refer to the front of this parts list book (machine assemblies), decide if the part you want is on:

Shelbourne Head
Adaptor Kit
Drive Kit

If your part is on the Adaptor Kit, identify by matching the part number from the adaptor plate with that in the top left hand corner of the parts lists. You will find the appropriate drawing accompanying the parts list.

If the part you require is on the drive kit, ensure that you have the parts listing for the correct combine model and width. Then progress through to the next drawing following that list, for indication of that part.

If the part you require is on the *Shelbourne* Head assembly, identify the appropriate assembly by matching the part number from the *Shelbourne* Head with the page with the same number marked on the top left hand side.

Use the following sub assembly numbers and descriptions to find the area of the machine that your part is required, i.e. you need a part which is fitted to the auger, your part will be in the auger assembly parts list.

Having decided which sub-assembly your part should be under, use the number beside that sub-assembly description which will begin with 1960-- -- to find the parts listing of the sub-assembly further on in the manual. The number will be printed in the top left hand corner, the sub-assemblies are in numerical order.

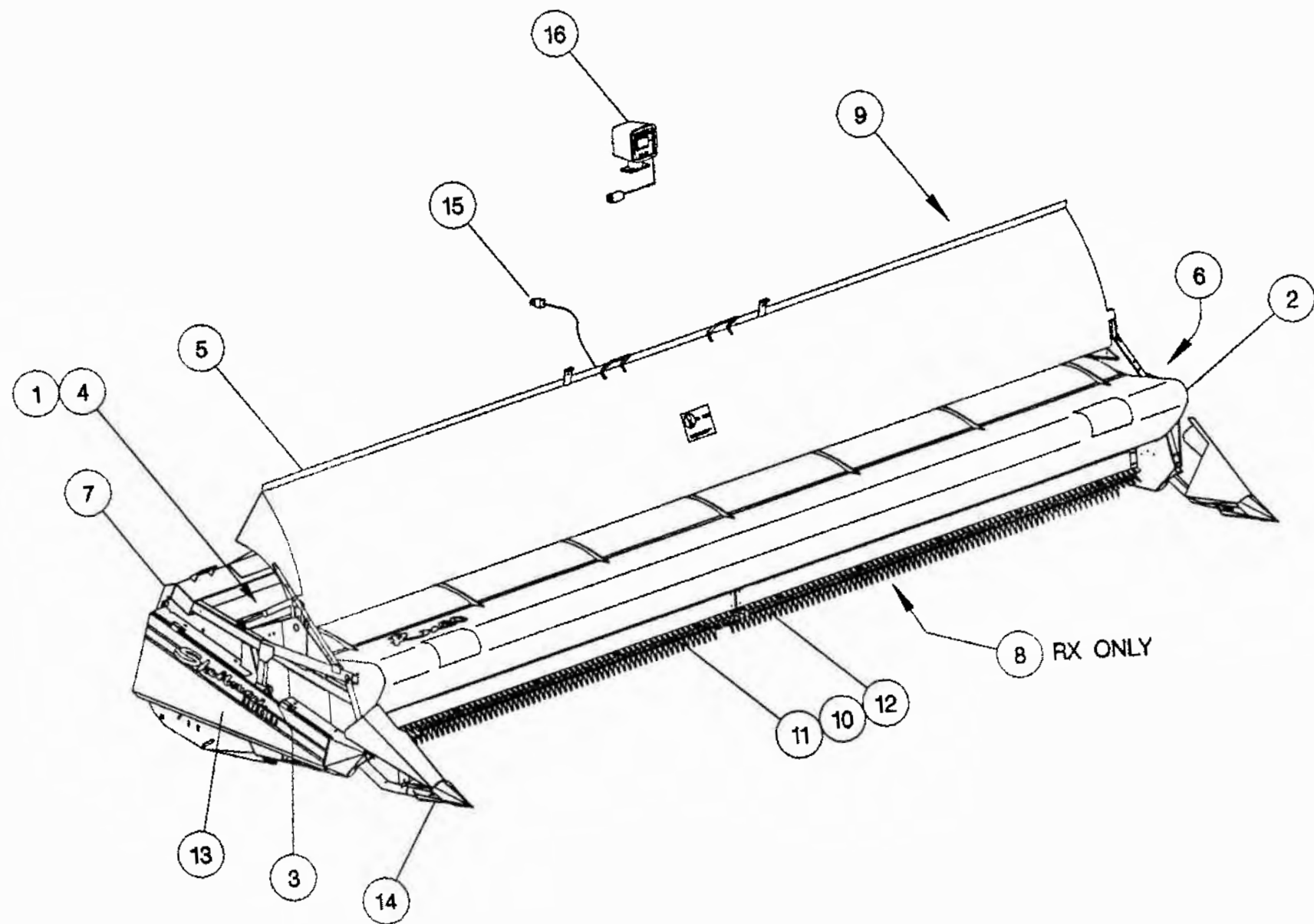
Having found the correct parts list, you will find the corresponding drawing by processing through the manual to the next drawing.

The drawings indicate the components by item numbers which you will find are repeated in the left hand side of your parts listing, and therefore referring to the correct part.

If the item within the sub-assembly is a further collection of parts (i.e. a KIT within a sub assembly) then the parts listing for this will be found just after the 1960-- -- sub-assemblies. These smaller assemblies will be in alphabetical and numerical order.

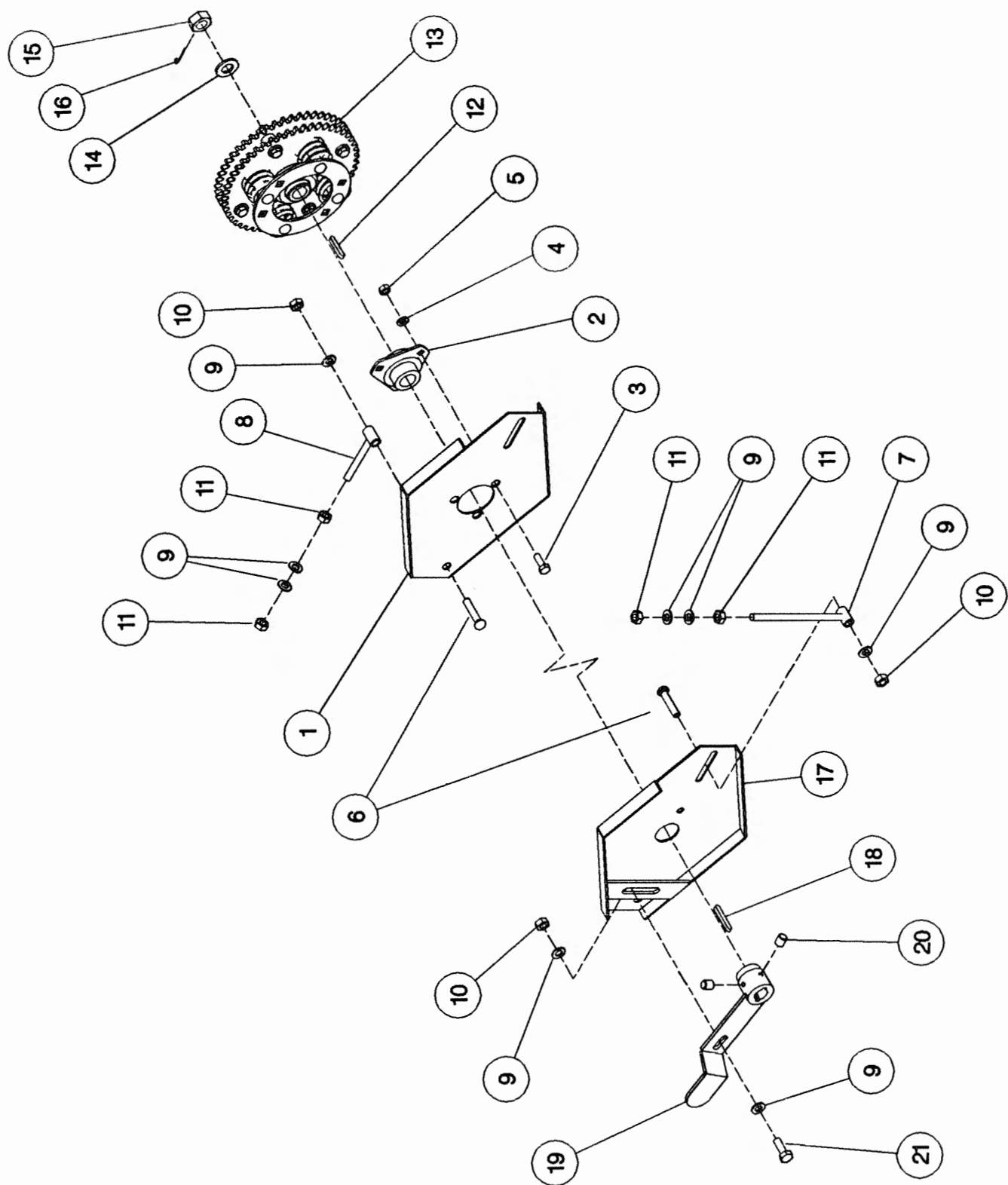
Shelbourne Reynolds Engineering Limited

ASSY NUMBER: 196524 11				ASSY DESCRIPTION: RX66 SHAKERPAN SHELBOURNE HEADER			
ITEM	PART NO	DESCRIPTION	QTY	ITEM	PART NO	DESCRIPTION	QTY
1	196052 01	AUGER MTG SUB	1				
2	196053 11	ADJ CROP DEFLECTOR SUB	1				
3	196060 11	HYDRAULICS	1				
4	196065 11	AUGER ASSY	1				
5	196066 11	HOOD SUB ASSY	1				
6	196067 02	DRIVE COMPONENTS	1				
7	196068 11	FRAME & PARTS	1				
8	196069 11	SHAKER PAN SUB	1				
9	196081 01	ROTOR DRIVE SUB	1				
10	196075 01	ROTOR MTG SUB	1				
11	196076 10	STRIPPING ROTOR R/H ASSY	1				
12	196076 15	STRIPPING ROTOR L/H ASSY	1				
13	196070 02	EMBLEMS AND GUARDS	1				
14	196078 01	TORPEDO DIVIDER SUB	1				
15	RDS-0005	HEADER MONITORING KIT	1				
16	RDS-0001	COMBINE MONITOR KIT	1				



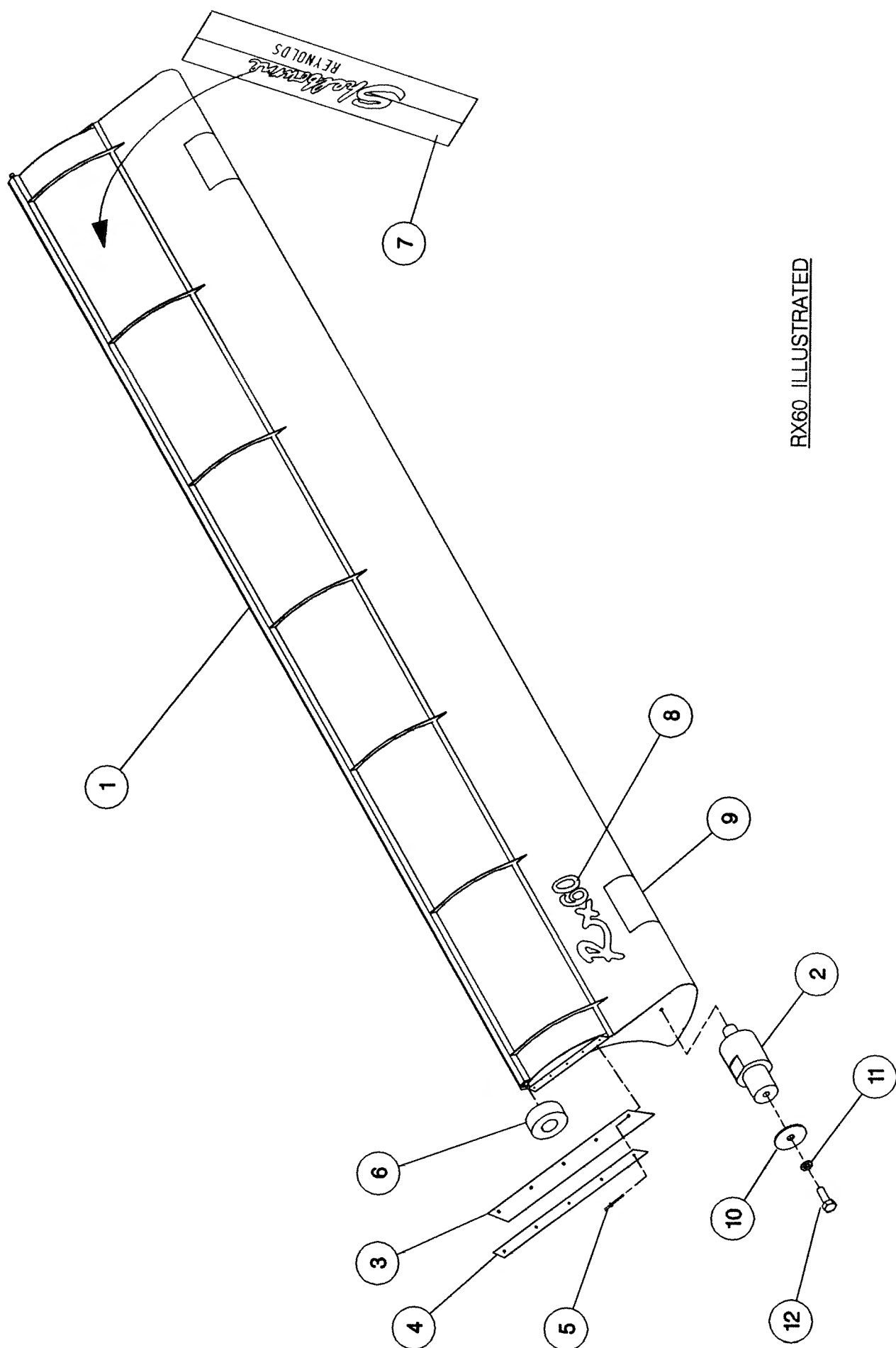
Shelbourne Reynolds Engineering Limited

ASSY NUMBER:		196052 01		ASSY DESCRIPTION:		AUGER MOUNTING/DRIVE KIT	
ITEM	PART NO	DESCRIPTION	QTY	ITEM	PART NO	DESCRIPTION	QTY
1	200035 03	SUPPORT PLATE L. H.	1				
2	BRG-0240	BEARING	1				
3	HSS-0191	SET SCREW	3				
4	WSH-0015	PLAIN WASHER	3				
5	NUT-0265	NYLOC NUT	3				
6	BLT-3812	COACH BOLT	4				
7	190585 06	VERTICAL ADJUSTER	2				
8	190585 04	HORIZONTAL ADJUSTER	2				
9	WSH-0018	PLAIN WASHER	14				
10	NUT-0269	NYLOC NUT	5				
11	NUT-0170	PLAIN NUT	8				
12	K0807050	KEY	1				
13	KIT-00108	AUGER SLIP CLUTCH (SEE PARTS LIST KIT-00108)	1				
14	WSH-0030	PLAIN WASHER	1				
15	NUT-0580	CASTLE NUT	1				
16	PIN-1150	SPLIT PIN	1				
17	200038 01	SUPPORT PLATE R. H.	1				
18	K0807060	KEY	1				
19	200120 02	ADJUSTER ASSY	1				
20	SCW-4535	GRUB SCREW	2				
21	HSS-0241	SET SCREW	1				



Shelbourne Reynolds Engineering Limited

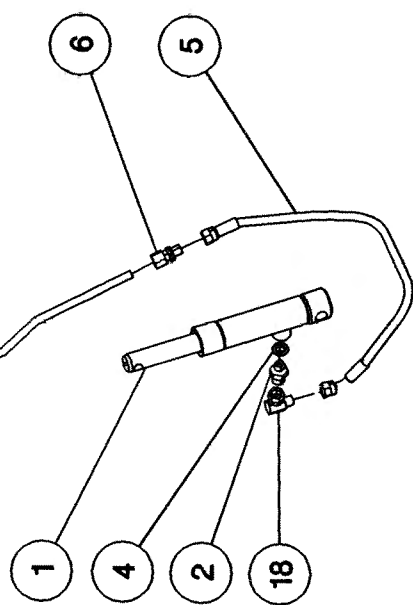
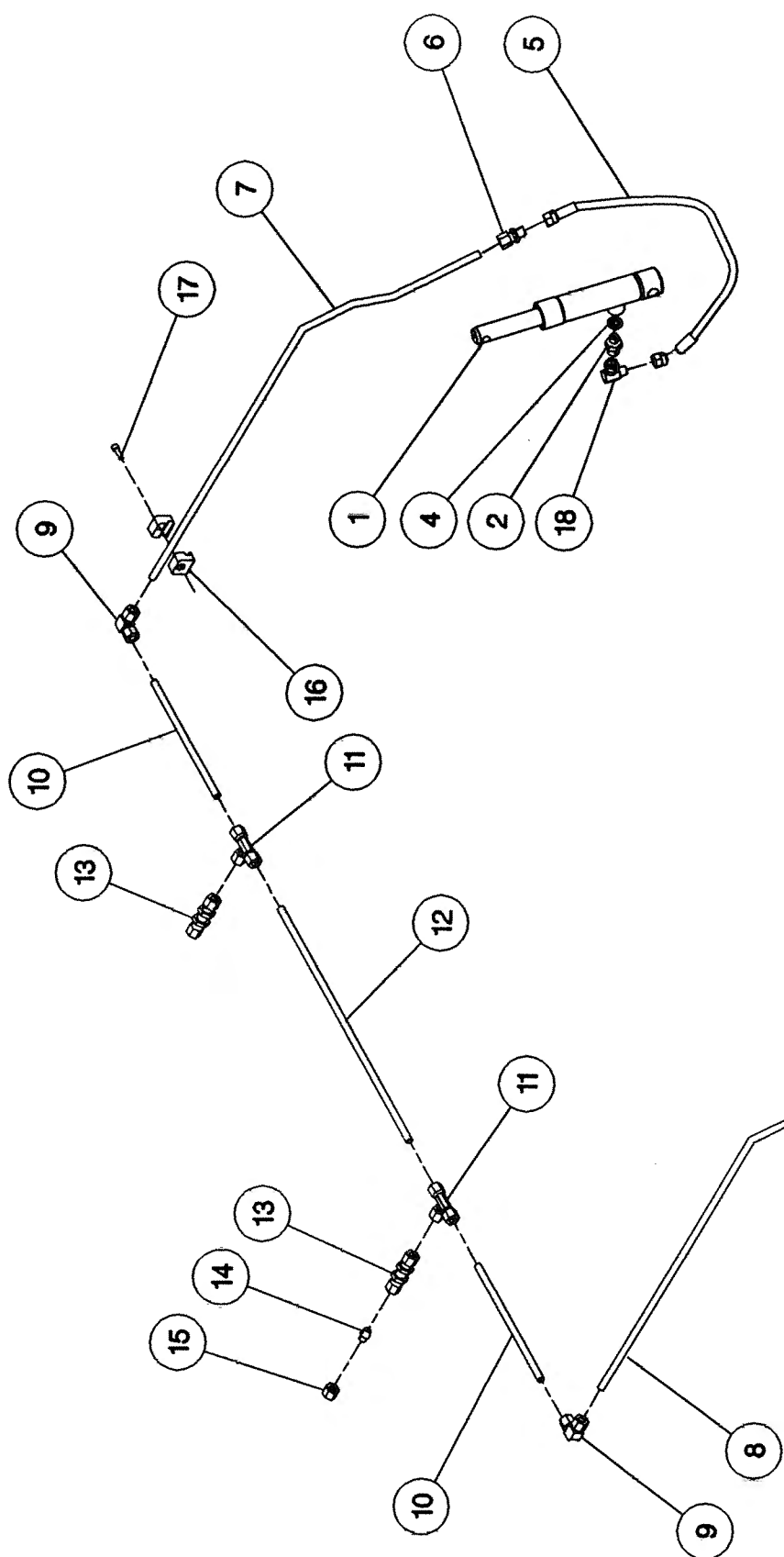
ASSY NUMBER: 196053 11				ASSY DESCRIPTION: ADJ. CROP DEFLECTOR SUB ASSY (RX66)			
ITEM	PART NO	DESCRIPTION	QTY	ITEM	PART NO	DESCRIPTION	QTY
1	192729 01	ADJ. CROP DEFLECTOR (6.6M)	1				
2	190361 01	PIVOT BUSH	2				
3	192037 01	RUBBER SEAL	2				
4	192038 01	CLAMP STRIP	2				
5	POP-0006	POP RIVET	10				
6	191642 01	ROLLER	2				
7	191981 01	EMBLEM (SHEL. REYNOLDS)	1				
8	192524 08	EMBLEM (RX66)	1				
9	191773 01	EMBLEM (NO STRAPS, ETC.)	2				
10	190119 05	PLAIN WASHER	2				
11	WSH-0058	WASHER	2				
12	HSS-0140	SETSCREW	2				



RX60 ILLUSTRATED

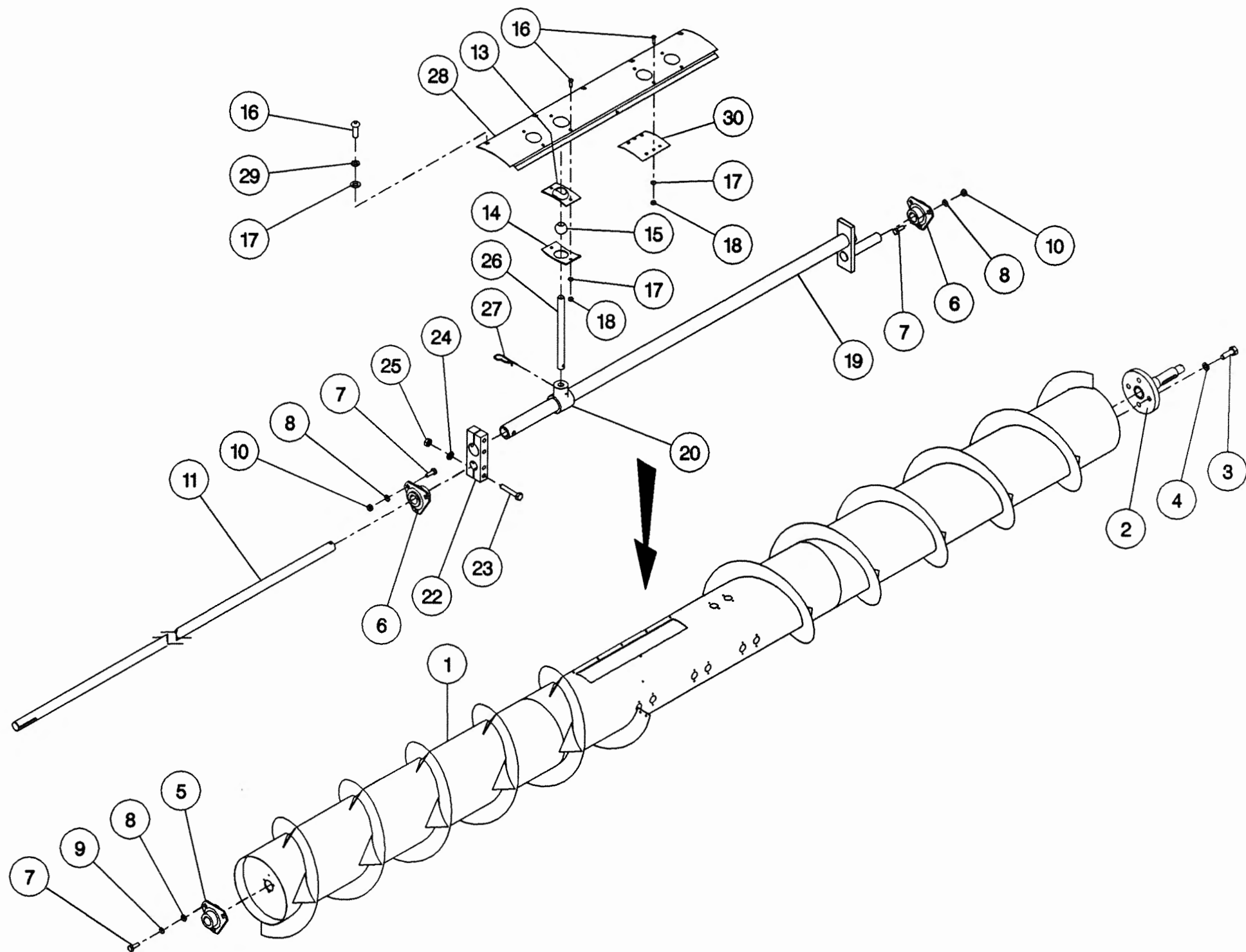
Shelbourne Reynolds Engineering Limited

ASSY NUMBER: 196060 11				ASSY DESCRIPTION: HYDRAULIC CIRCUIT SUB 6.6M			
ITEM	PART NO	DESCRIPTION	QTY	ITEM	PART NO	DESCRIPTION	QTY
1	REF	HYDRAULIC RAM	2				
2	190859 01	HYDRAULIC FITTING	2				
3							
4	WSH-1010	DOWTY WASHER	2				
5	HHDC03805	HOSE	2				
6	FIT-0047	HYDRAULIC FITTING	2				
7	192361 01	SIDE PIPE LH	1				
8	192361 02	SIDE PIPE RH	1				
9	FIT-0214	HYD FITTING	2				
10	RP-102080	STEEL PIPE	2				
11	FIT-0212	HYD FITTING	2				
12	RP-102470	STEEL PIPE	1				
13	FIT-0213	HYD FITTING	2				
14	FIT-0215	HYD PLUG FITTING	1				
15	FIT-0051	NUT	1				
16	FIT-1000	PETA CLAMPS	4				
17	SCW-0089	CAP HEAD SCREW	4				
18	HALAA0303	HYD FITTING	2				



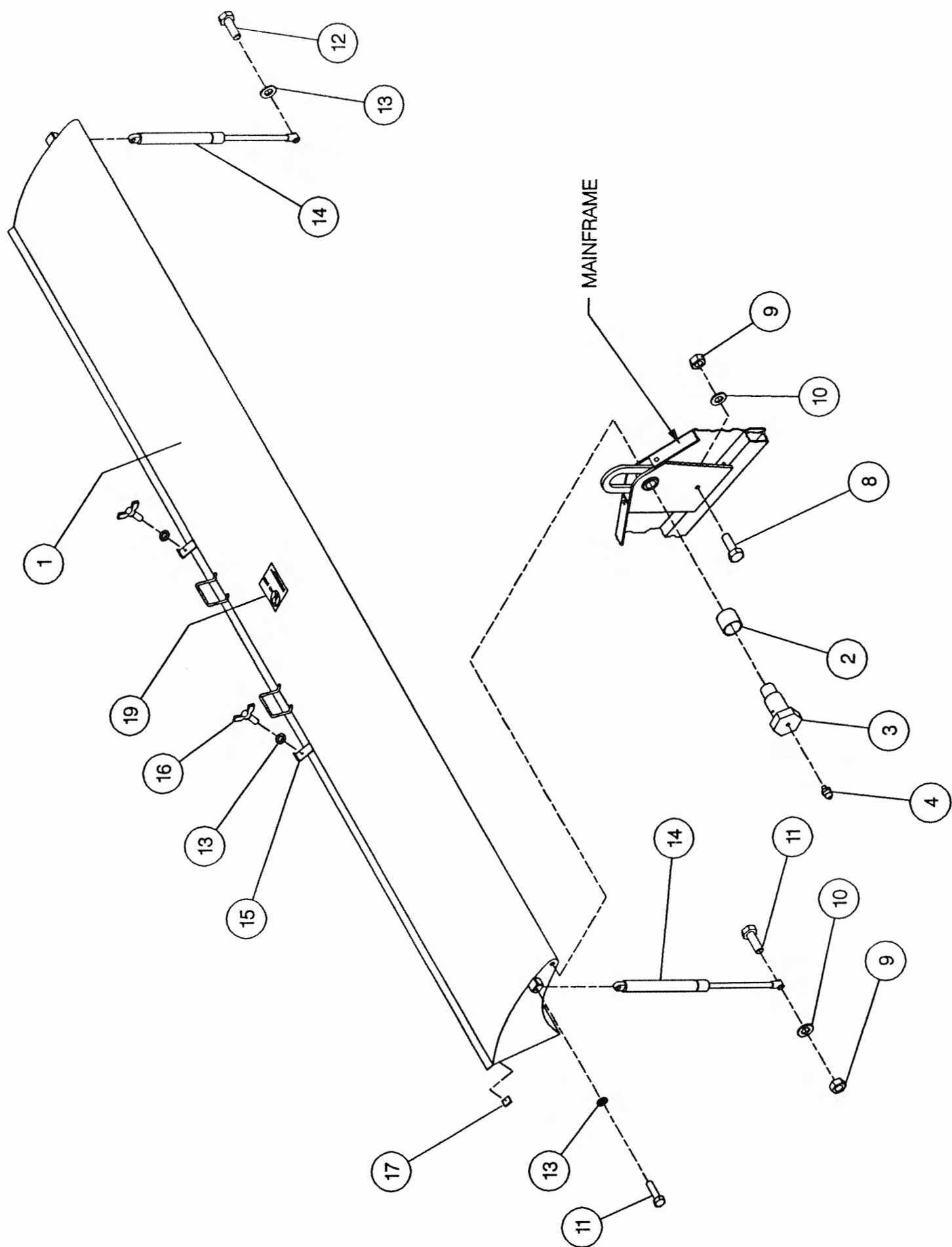
Shelbourne Reynolds Engineering Limited

ASSY NUMBER: 196065 11				ASSY DESCRIPTION: AUGER ASSY 6.6M (RET. FIN/LARGE DIA.)			
ITEM	PART NO	DESCRIPTION	QTY	ITEM	PART NO	DESCRIPTION	QTY
1	192690 01	AUGER W. ASSY.	1	27	AUG-03000	HAIRPIN COTTER	
2	192011 01	AUGER DRIVE SHAFT	1			(16 FINGERS OPTION)	16
3	HSS-0191	SET SCREW	4	OR		(20 FINGERS OPTION)	20
4	WSH-0065	SPRING WASHER	4	OR		(24 FINGERS OPTION)	24
5	BRG-0218	BEARING	1	28	192226 01	COVER PLATE	2
6	BRG-7080	BEARING	2	29	WSH-0056	SPRING WASHER	12
7	HSS-0140	SET SCREW	9	30	190735 01	BLANKING PLATE	
8	WSH-0012	PLAIN WASHER	9			(16 FINGERS OPTION)	8
9	WSH-0058	SPRING WASHER	3	OR		(20 FINGERS OPTION)	4
10	NUT-0263	NYLOC NUT	6	OR		(24 FINGERS OPTION)	0
11	192223 02	AUGER SHAFT	1	31			
12				32			
13	AUG-01000	UPPER FINGER PL. (CONCAVE)		33			
		(16 FINGERS OPTION)	16				
OR		(20 FINGERS OPTION)	20				
OR		(24 FINGERS OPTION)	24				
14	AUG-01500	LOWER FINGER PL. (CONVEX)					
		(16 FINGERS OPTION)	16				
OR		(20 FINGERS OPTION)	20				
OR		(24 FINGERS OPTION)	24				
15	AUG-02000	FINGER GUIDE(BALL)					
		(16 FINGERS OPTION)	16				
OR		(20 FINGERS OPTION)	20				
OR		(24 FINGERS OPTION)	24				
16	SCW-4960	BUTT. HD. SKT. SCREW	60				
17	WSH-0009	PLAIN WASHER	60				
18	NUT-0260	NYLOC NUT	48				
19	192311 01	AUGER CRANK	1				
20	AUG-02500	FINGER HOLDER	24				
21							
22	192307 01	AUGER CLAMP	1				
23	BLT-2202	BOLT	4				
24	WSH-0015	PLAIN WASHER	4				
25	NUT-0265	NYLOC NUT	4				
26	192310 01	FINGER (16mm DIA.)					
		(16 FINGERS OPTION)	16				
OR		(20 FINGERS OPTION)	20				
OR		(24 FINGERS OPTION)	24				



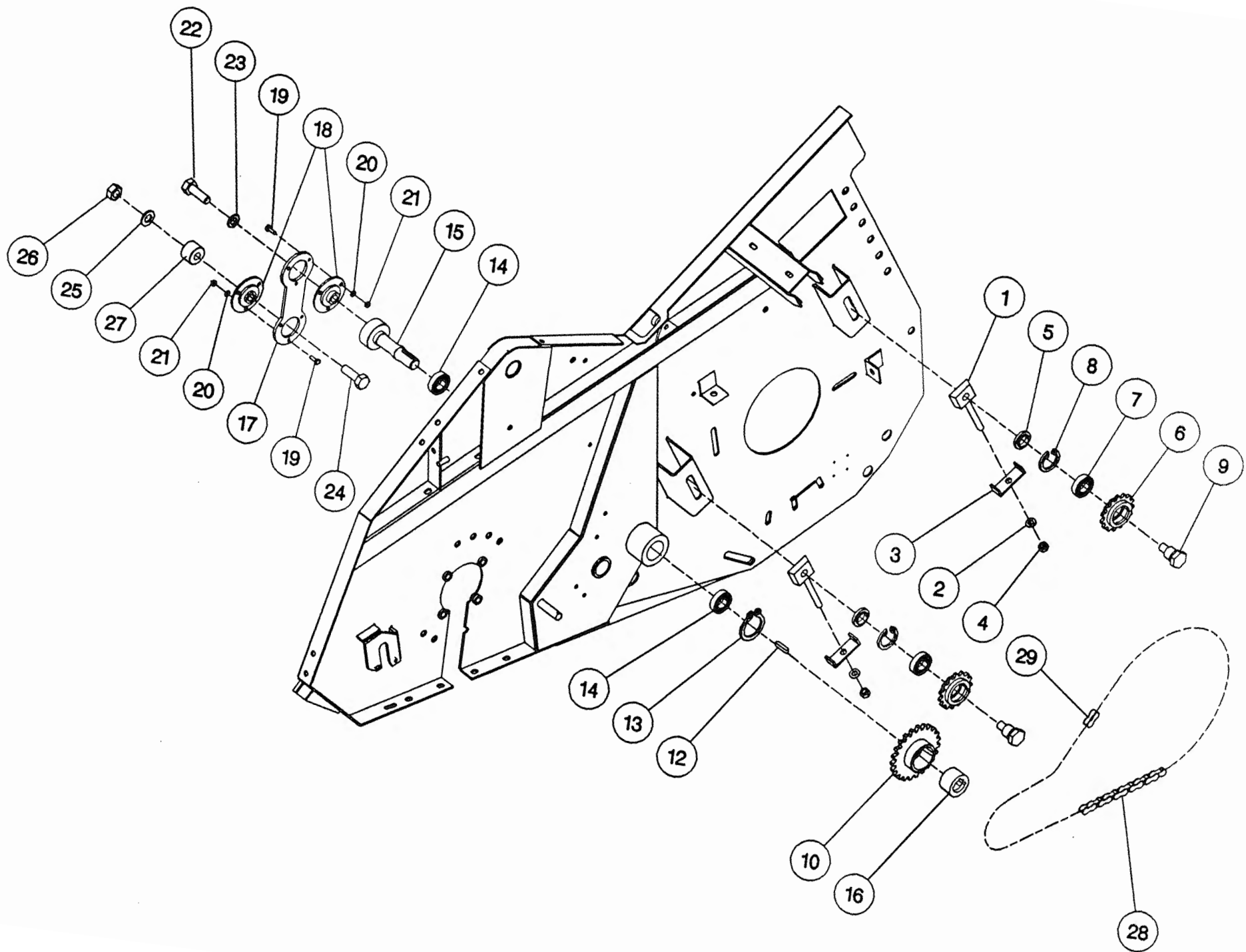
Shelbourne Reynolds Engineering Limited

ASSY NUMBER: 196066 11				ASSY DESCRIPTION: TOP DOOR COWL ASSY (RX66)			
ITEM	PART NO	DESCRIPTION	QTY	ITEM	PART NO	DESCRIPTION	QTY
1	192700 01	COWL ASSY (RX66)	1				
2	BSH-3030	BUSH	2				
3	192044 01	COWL PIN	2				
4	NIP-0051	GREASE ZERK	2				
5							
6							
7							
8	HSS-0191	SETSCREW	2				
9	NUT-0265	NUT	3				
10	WSH-0015	WASHER	3				
11	BLT-2191	BOLT	3				
12	HSS-0198	SETSCREW	1				
13	WSH-0061	WASHER	5				
14	GSTA14406	GAS STRUTT	2				
15	192352 01	HOOD HOLD DOWN CLIP	2				
16	SCW-4760	WING SCREW	2				
17	PAP-00000	PLASTIC ADHESIVE PAD	12				
18							
19	192718 01	TRANSFER (NO STEP)	1				



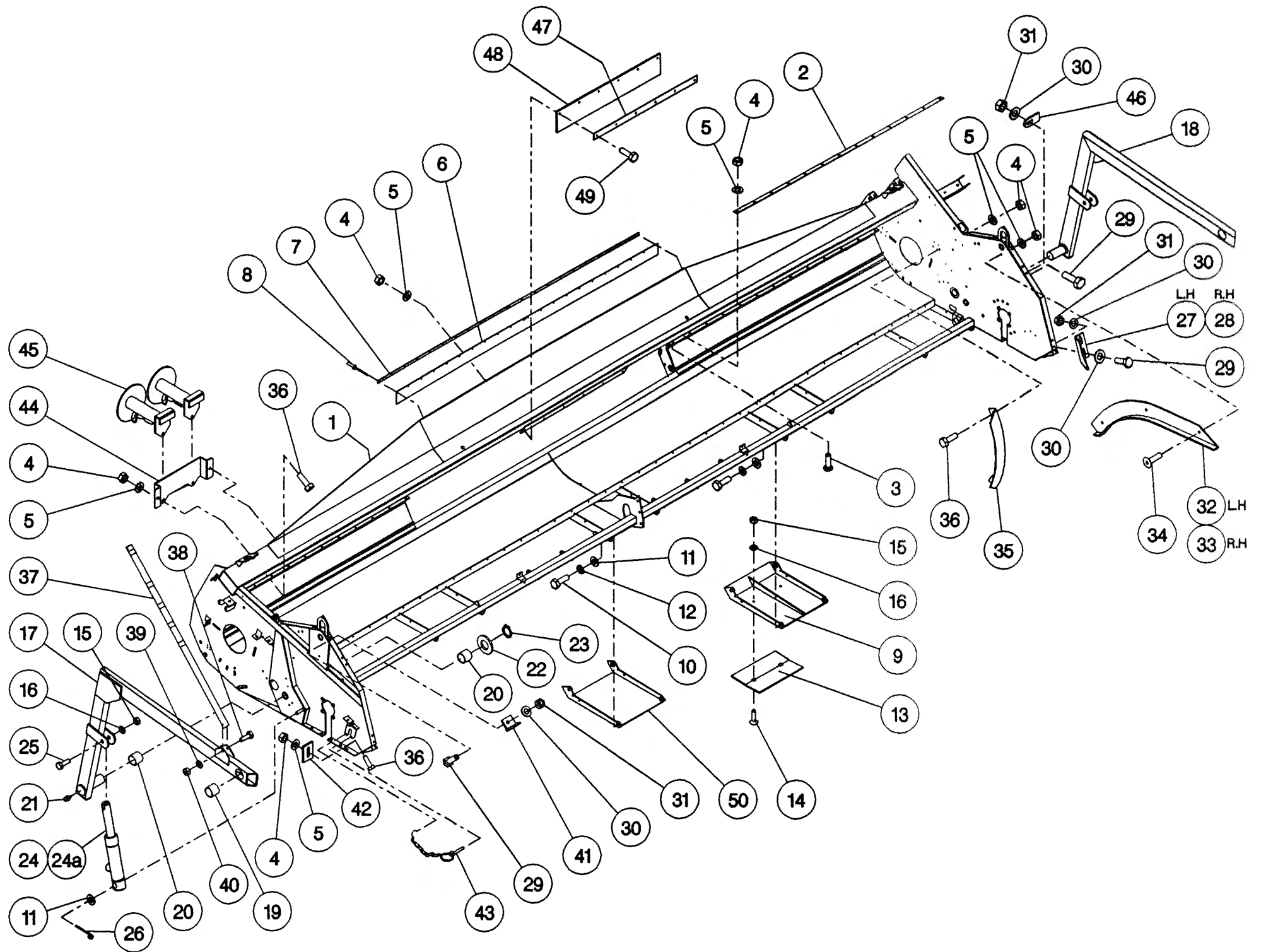
Shelbourne Reynolds Engineering Limited

ASSY NUMBER: 196067 02				ASSY DESCRIPTION: DRIVE PARTS SHAKERPAN STD			
ITEM	PART NO	DESCRIPTION	QTY	ITEM	PART NO	DESCRIPTION	QTY
1	191777 01	IDLER ADJ SCREW	2				
2	WSH-0018	WASHER	2				
3	191774 01	PLATE	2				
4	NUT-0269	NUT	2				
5	191040 01	SPACER	2				
6	131014 01	SPROCKET IDLER	2				
7	BRG-1995	BEARING	2				
8	CIR-0470	CIRCLIP	2				
9	190060 06	IDLER SPINDLE	2				
10	192258 01	PAN DRIVE SPROCKET 23T	1				
11							
12	K0807035	KEY	1				
13	CIR-1125	CIRCLIP	1				
14	BRG-1994	BEARING	2				
15	192263 01	PAN DRIVE SHAFT	1				
16	BSHZ02553	LOCKING BUSH	1				
17	192265 01	PITMAN	1				
18	BRG-22500	BEARING	2				
19	HSS-0188	SETSCREW	6				
20	WSH-0009	FLAT WASHER	6				
21	NUT-0260	NUT	6				
22	HSS-0318	SETSCREW	1				
23	WSH-0070	SPRING WASHER	1				
24	BLT-2316	BOLT	1				
25	WSH-0024	FLAT WASHER	1				
26	NUT-0271	NUT	1				
27	192344 01	SPACER	1				
28	CHN-0020	CHAIN	89				
29	CHN-0111	JOINER	1				



Shelbourne Reynolds Engineering Limited

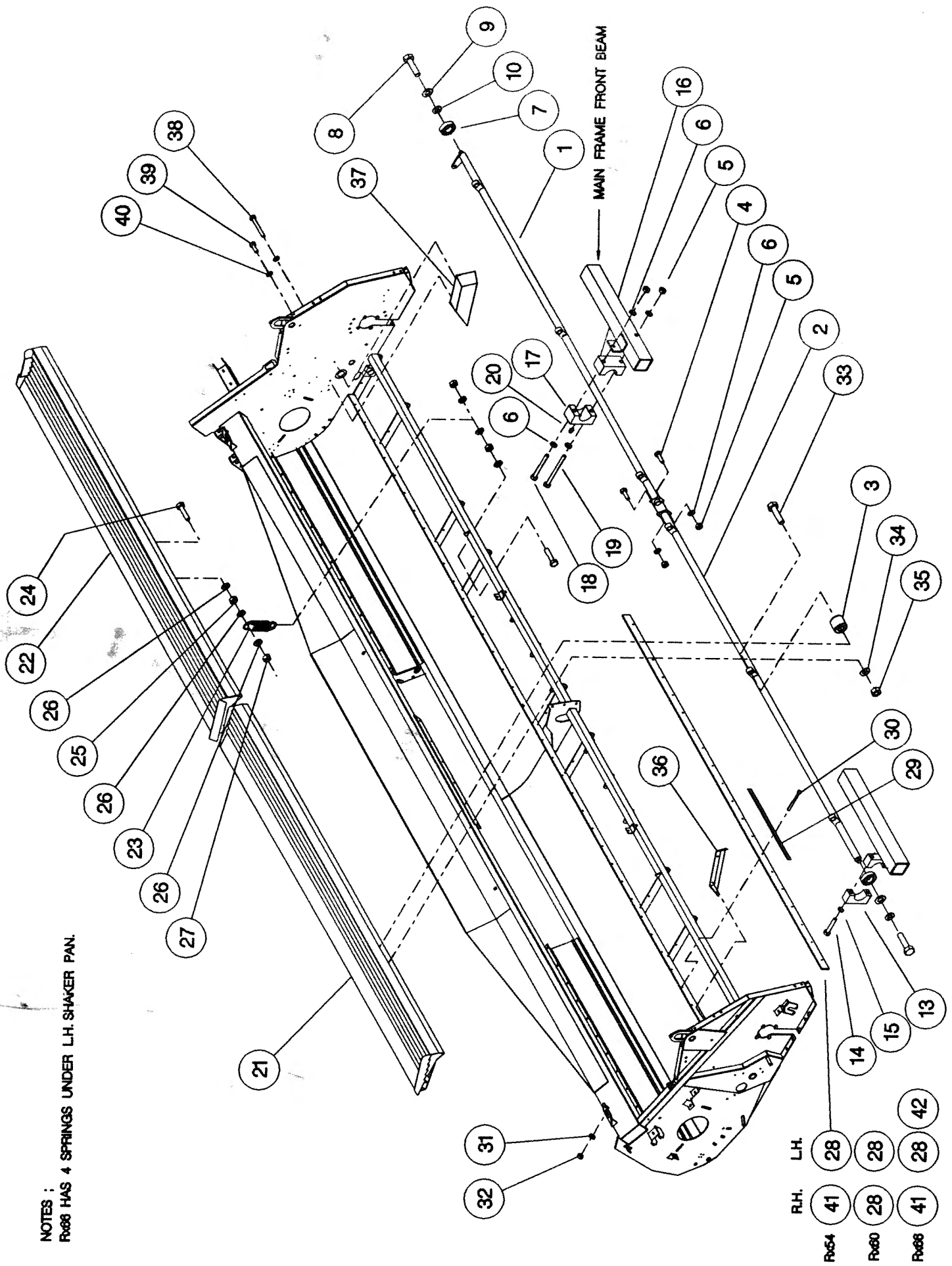
ASSY NUMBER: 196068 11				ASSY DESCRIPTION: FRAME & PARTS SUB (RX66)			
ITEM	PART NO	DESCRIPTION	QTY	ITEM	PART NO	DESCRIPTION	QTY
1	192734 01	RX66 MAIN FRAME ASSY	1	38	HSS-0092	SETSCREW	1
2	191034 14	STRIPPER PLATE	2	39	WSH-0009	PLAIN WASHER	1
3	BLT-4710	COACH BOLT	30	40	NUT-0260	NYLOC NUT	1
4	NUT-0263	NUT	50	41	192484 01	SUPPORT BRACKET	1
5	WSH-0012	WASHER	50	42	192543 01	CROP DIVIDER ADJ. PLATE	2
6	191340 01	RUBBER SEAL	1	43	PIN-01790	LYNCH PIN & CHAIN	2
7	191339 01	CLAMP STRIP	2	44	192544 01	HEADER STAND BRACKET	1
8	POP-0006	POP RIVET	22	45	192349 01	HEADER FRONT STAND	2
9	192260 01	SKID	4	46	192550 01	NOSE ARM STOP PLATE	1
10	HSS-0314	SET SCREW	20	47	192573 01	CLAMP STRIP	1
11	WSH-0024	WASHER	22	48	192574 01	RUBBER CURTAIN	1
12	WSH-0070	WASHER	20	49	HSS-0150	SET SCREW	6
13	191592 01	WEAR PLATE	4	50	192601 01	SKID (CTR.)	1
14	SCW-1955	CSK SCREW	8				
15	NUT-0269	NUT	10				
16	WSH-0018	WASHER	10				
17	191259 02	ADJ COWL SUPPORT ARM R. H	1				
18	191259 01	ADJ COWL SUPPORT ARM L. H	1				
19	BSH-3030	BUSH	2				
20	BSH-3070	BUSH	4				
21	NIP-0001	GREASE ZERK	2				
22	WSH-1547	WASHER	2				
23	CIR-1150	CIRCLIP	2				
24	192080 01	HYDRAULIC RAM	2				
24a	RMSK00010	SEAL KIT					
25	HSS-0260	SET SCREW	2				
26	PIN-1150	SPLIT PIN	2				
27	192193 01	ADJ COWL STOP L. H	1				
28	192193 02	ADJ COWL STOP R. H	1				
29	HSS-0194	SET SCREW	6				
30	WSH-0015	WASHER	10				
31	NUT-0265	NUT	6				
32	192055 01	RUNNER ASSY L. H	1				
33	192055 02	RUNNER ASSY R. H	1				
34	SCW-1735	SCREW	6				
35	192304 01	AUGER END DEFLECTOR	2				
36	HSS-0140	SET SCREW	8				
37	192494 01	INDICATOR ROD	1				



Shelbourne Reynolds Engineering Limited

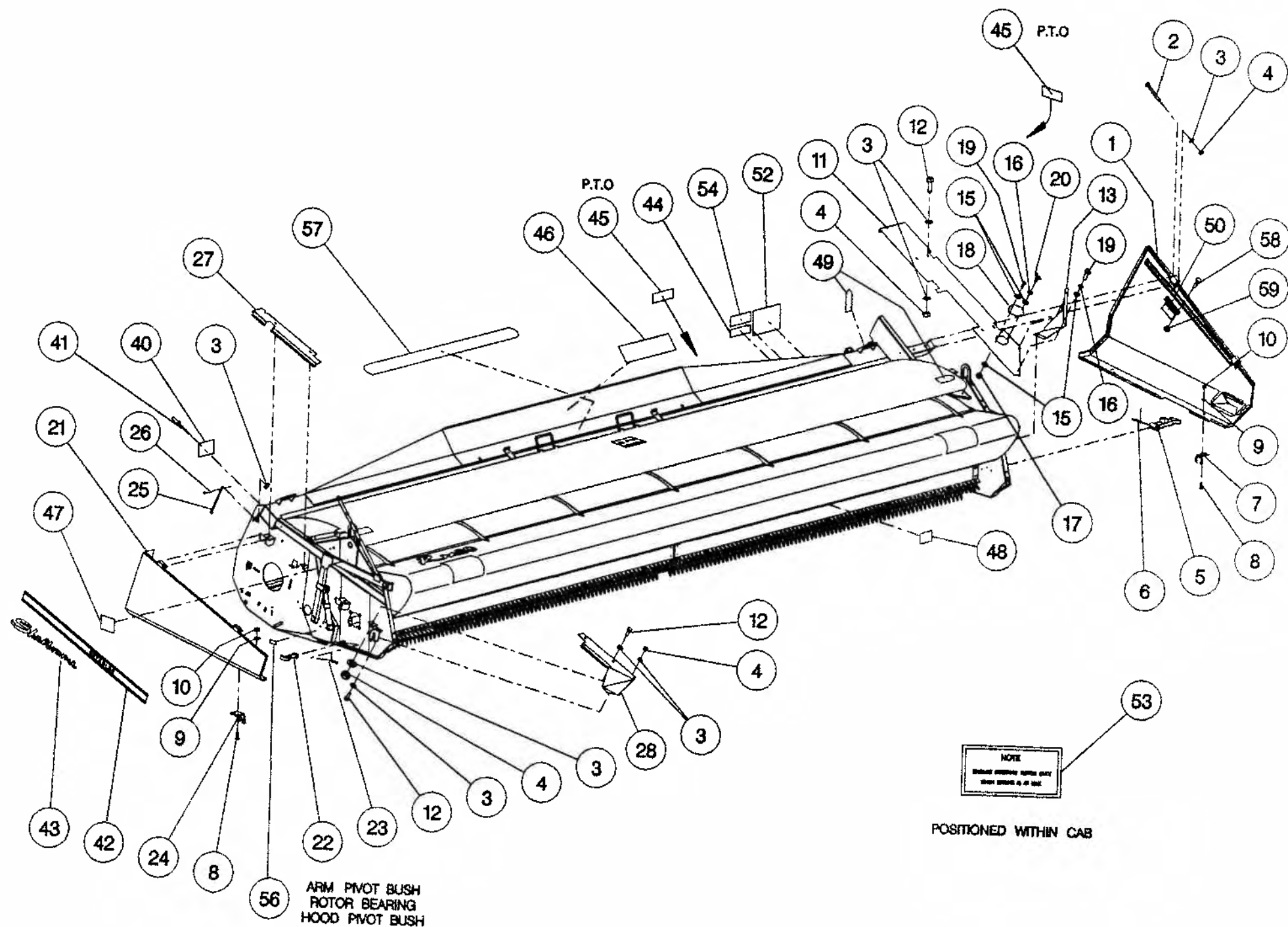
ASSY NUMBER: 196069 11				ASSY DESCRIPTION: SHAKER PAN SUB (RX66)			
ITEM	PART NO	DESCRIPTION	QTY	ITEM	PART NO	DESCRIPTION	QTY
1	192732 01	TORSION TUBE L. H (3.6M)	1	38	BLT-2090	BOLT	2
2	192289 01	TORSION TUBE R. H (3.0M)	1	39	HSS-0084	SET SCREW	2
3	BSH-1530	RUBBER BUSH INSERT	6	40	WSH-0056	SPRING WASHER	4
4	HSS-0191	SETSCREW	2	41	192274 01	SEAL STRIP	1
5	NUT-0265	NYLOC NUT	6	42	192738 02	OUTER SEAL STRIP	1
6	WSH-0015	FLAT WASHER	10				
7	BRG-1995	BEARING	2				
8	HSS-0317	SET SCREW	2				
9	WSH-0070	SPRING WASHER	2				
10	WSH-0024	PLAIN WASHER	2				
11							
12							
13	192264 02	CLAMP BLOCK TOP	2				
14	BLT-2197	BOLT	4				
15	WSH-0061	SPRING WASHER	4				
16	192266 01	PIVOT BLOCK BOTTOM	2				
17	192266 02	PIVOT BLOCK TOP	2				
18	BLT-2209	BOLT	2				
19	HSSA10680	SETSCREW	2				
20	NIP-0050	GREASE ZERK	2				
21	192302 01	SHAKER PAN ASSY R. H (3.0M)	1				
22	192717 01	SHAKER PAN ASSY L. H (3.6M)	1				
23	SPGA21521	SPRING	7				
24	HSS-0152	SETSCREW	14				
25	NUT-0164	NUT	14				
26	WSH-0012	WASHER	21				
27	NUT-0263	NUT	14				
28	192738 01	SEAL STRIP	1				
29	192273 01	CLAMP STRIP	11				
30	BLT-2110	BOLT	44				
31	WSH-0009	FLAT WASHER	44				
32	NUT-0260	NYLOC NUT	44				
33	HSS-0260	SET SCREW	6				
34	WSH-0018	PLAIN WASHER	6				
35	NUT-0269	NYLOC NUT	6				
36	192355 01	END DEFLECTOR R. H.	1				
37	192354 01	END DEFLECTOR L. H.	1				

NOTES :
R068 HAS 4 SPRINGS UNDER L.H. SHAKER PAN.



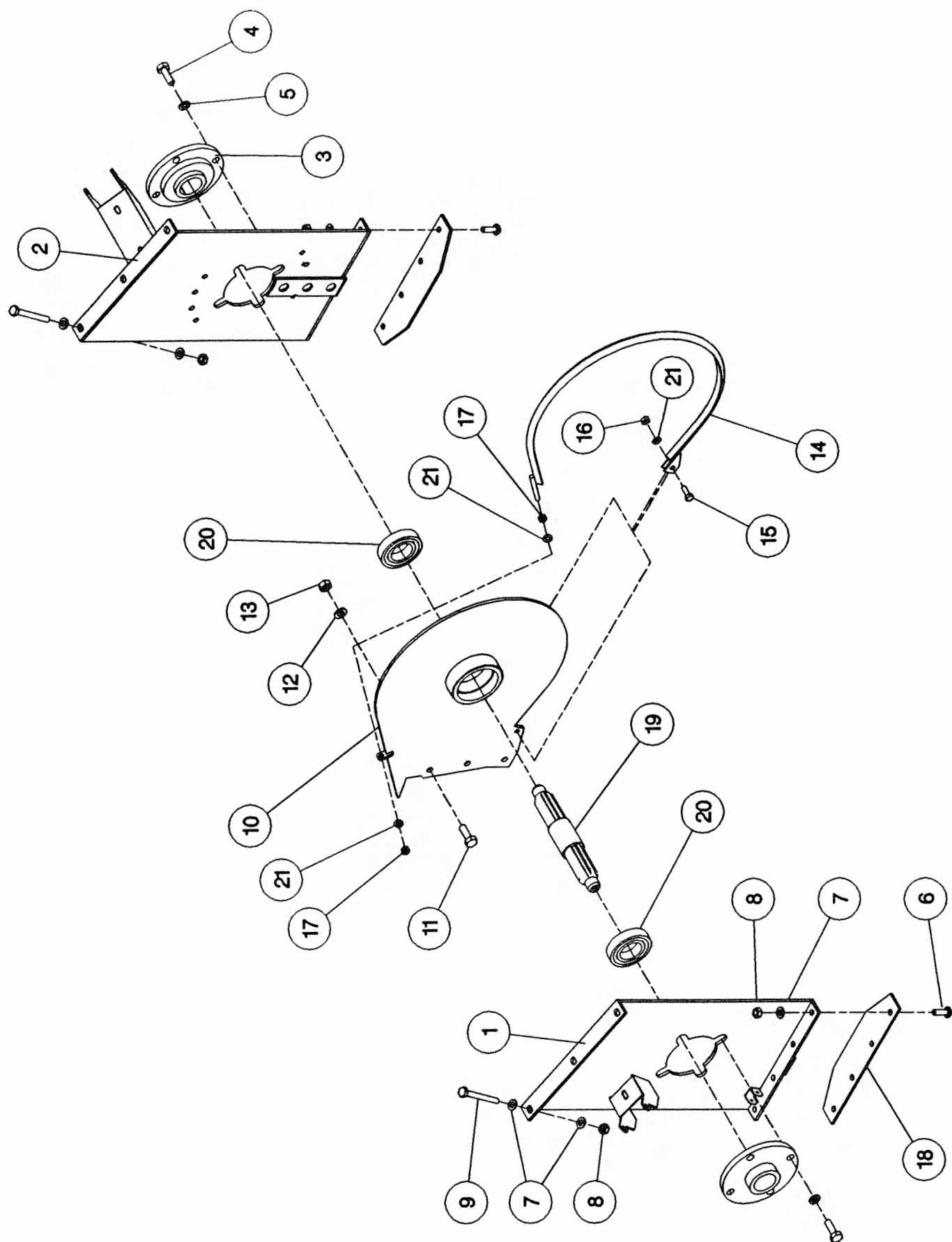
Shelbourne Reynolds Engineering Limited

ASSY NUMBER: 196070 02				ASSY DESCRIPTION: EMBLEMS AND GUARDS SUB (SHAKER PAN)			
ITEM	PART NO	DESCRIPTION	QTY	ITEM	PART NO	DESCRIPTION	QTY
1	192325 01	L. H. GUARD	1	39			
2	BLT-2165	BOLT	4	40	191359 01	IDENTIFICATION PLATE	1
3	WSH-0012	PLAIN WASHER	25	41	POP-0006	POP RIVET	4
4	NUT-0263	NYLOC NUT	14	42	191983 01	EMBLEM (STRIPES & REYNOLDS)	2
5	RUB-0151	BONNET FASTENER (LARGE)	2	43	191982 01	EMBLEM (SHELBOURNE)	2
6	RUB-0154	HINGE PIN (LARGE)	2	44	127075 10	EMBLEM (IMPORTANT)	1
7	RUB-0153	BONNET FAST. CATCH (LARGE)	2	45	127075 12	EMBLEM (GREASE 10 HOURS)	2
8	SCW-4956	BUTT. SOC. HEAD. SCREW	8	46	TNF-0003	EMBLEM (AWARDS)	1
9	WSH-0006	PLAIN WASHER	8	47	190702 03	EMBLEM (DANGER, KEEP CLEAR)	2
10	NUT-0258	NYLOC NUT	8	48	190702 02	EMBLEM (CAUTION, LOCK BOLTS)	4
11	192336 01	L. H. TOP COVER	1	49	190702 04	EMBLEM (SLING POINT)	4
12	HSS-0140	SET SCREW	10	50	192839 01	EMBLEM (SHEARBOLT PART No.)	1
13	192570 01	FRONT DEFLECTOR L. H.	1	51			
14				52	190849 01	EMBLEM (WARNING)	1
15	WSH-0009	PLAIN WASHER	5	53	190848 05	EMBLEM (CAB)	1
16	WSH-0056	SPRING WASHER	3	54	192376 01	EMBLEM (PTO WARNING)	1
17	NUT-0260	NYLOC NUT	1	55			
18	191355 01	COVER	1	56	127075 16	EMBLEM (GREASE 50 HOURS)	6
19	HSS-0084	SET SCREW	3	57	192562 01	ANTI-SLIP STRIP	1
20	SCW-4700	WING SCREW	1	58	BLT-2158	SHEARBOLT	10
21	192329 01	R. H. GUARD	1	59	NUT-0164	NUT	10
22	RUB-0161	BONNET FASTENER (SMALL)	2				
23	RUB-0164	HINGE PIN (SMALL)	2				
24	RUB-0163	BONNET FAST. CATCH (SMALL)	2				
25	191370 01	GUARD STAY	1				
26	PIN-1088	SPLIT PIN	1				
27	192338 01	R. H. TOP COVER (REAR)	1				
28	192569 01	R. H. TOP COVER (FRONT)	1				
29							
30							
31							
32							
33							
34							
35							
36							
37							
38							



Shelbourne Reynolds Engineering Limited

ASSY NUMBER: 196075 01				ASSY DESCRIPTION: RX ROTOR MTG SUB (STD DRIVE)			
ITEM	PART NO	DESCRIPTION	QTY	ITEM	PART NO	DESCRIPTION	QTY
1	192268 02	ROTOR MTG PLATE R. H	1				
2	192268 01	ROTOR MTG PLATE L. H	1				
3	BRG-24540	BEARING	2				
4	HSS-0235	SETSCREW	8				
5	WSH-0065	WASHER	8				
6	SCW-0515	SCREW	8				
7	WSH-0015	WASHER	20				
8	NUT-0265	NUT	14				
9	BLT-2207	BOLT	6				
10	192504 01	DIVISION PLATE	1				
11	HSS-0238	SETSCREW	3				
12	WSH-0018	WASHER	3				
13	NUT-0269	NYLOC NUT	3				
14	192502 01	VEE STRIP ASSY	1				
15	HSS-0140	BOLT	1				
16	NUT-0263	NYLOC NUT	1				
17	NUT-0164	NUT PLAIN	2				
18	192353 01	DIVIDING PLATE	2				
19	192459 01	CENTRE SHAFT	1				
20	BRG-14510	BEARING	2				
21	WSH-0012	WASHER	3				

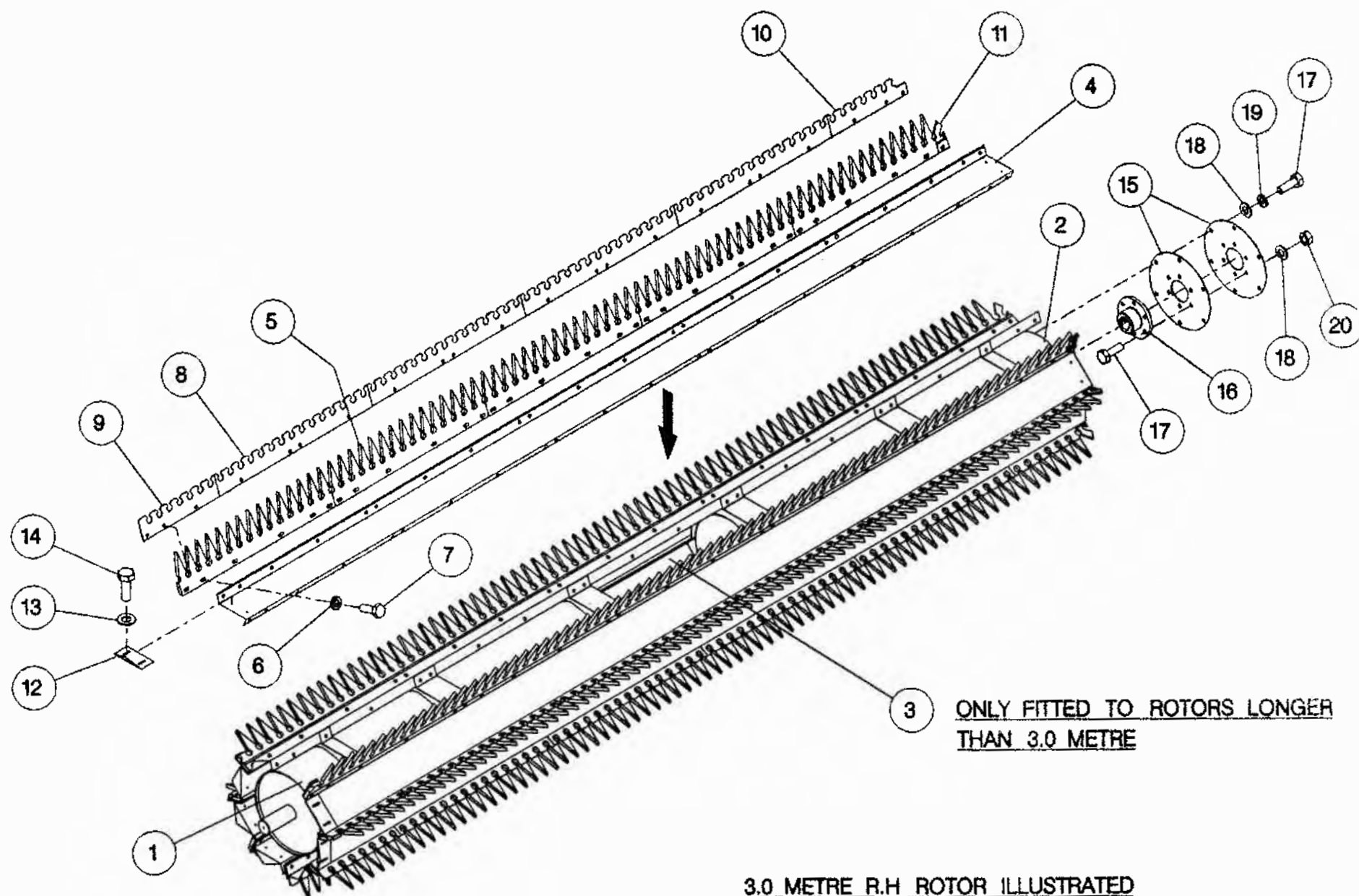


Shelbourne Reynolds Engineering Limited

ASSY NUMBER: 196076 10				ASSY DESCRIPTION: STRIPPING ROTOR ASSY (R/H) 3.0m			
ITEM	PART NO	DESCRIPTION	QTY	ITEM	PART NO	DESCRIPTION	QTY
1	192621 01	ROTOR CORE TUBE RH W/A	1				
2	192619 01	ROTOR CORE TUBE CTR RH W/A	1				
3							
4	192418 04	ROTOR SECTION (3.0m)	8				
5	191968 02	ELITE ELEMENT RICE	40				
6	WSH-0058	SPRING WASHER	176				
7	HSS-0147	SET SCREW	176				
8	192291 01	ANTI WEAR STRIP CTR.	32				
OR	192291 07	S-TYPE STRIP CTR	32				
9	192291 02	ANTI WEAR STRIP END	8				
OR	192291 08	S-TYPE STRIP END	8				
10	192291 03	ANTI WEAR STRIP CTR END	8				
OR	192291 09	S-TYPE STRIP CTR END	8				
11	191865 02	CENTRE FINGER (RH)	8				
12	192679 01	ANTI WRAP PLATE	8				
13	WSH-1034	PENNY WASHER	16				
14	SCW-5180	SELF TAP. SCREW	16				
15	192463 01	DRIVE DISC	2				
16	192460 01	CENTRE DRIVE BUSH ASSY	1				
17	HSS-0194	SETSCREW	12				
18	WSH-0015	WASHER	12				
19	WSH-0061	SPRING WASHER	6				
20	NUT-0265	NYLOC NUT	6				

Shelbourne Reynolds Engineering Limited

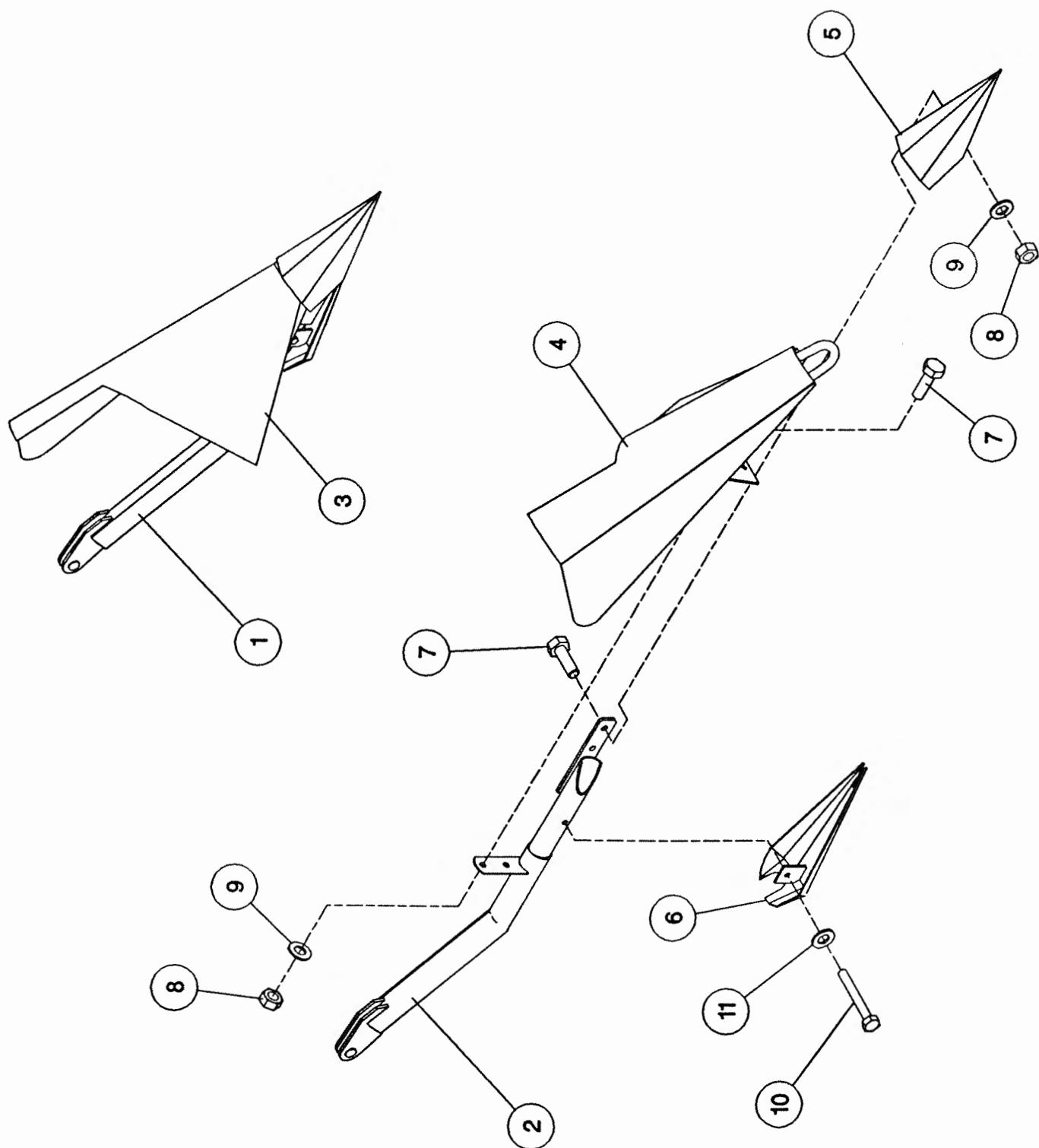
ASSY NUMBER: 196076 15				ASSY DESCRIPTION: STRIPPING ROTOR ASSY (L/H) 3.6m			
ITEM	PART NO	DESCRIPTION	QTY	ITEM	PART NO	DESCRIPTION	QTY
1	192622 01	ROTOR CORE TUBE LH W/A	1				
2	192620 01	ROTOR CORE TUBE CTR LH W/A	1				
3	192213 01	CORE PLATE	1				
4	192418 01	ROTOR SECTION (3.6M)	8				
5	191968 02	ELITE ELEMENT RICE	48				
6	WSH-0058	SPRING WASHER	208				
7	HSS-0147	SET SCREW	208				
8	192291 01	ANTI WEAR STRIP CTR.	40				
OR	192291 07	S-TYPE STRIP CTR	40				
9	192291 02	ANTI WEAR STRIP END	8				
OR	192291 08	S-TYPE STRIP END	8				
10	192291 03	ANTI WEAR STRIP CTR END	8				
OR	192291 09	S-TYPE STRIP CTR END	8				
11	191865 01	CENTRE FINGER (LH)	8				
12	192679 01	ANTI WRAP PLATE	8				
13	WSH-1034	PENNY WASHER	16				
14	SCW-5180	SELF TAP. SCREW	16				
15	192463 01	DRIVE DISC	2				
16	192460 01	CENTRE DRIVE BUSH ASSY	1				
17	HSS-0194	SETSCREW	12				
18	WSH-0015	WASHER	12				
19	WSH-0061	SPRING WASHER	6				
20	NUT-0265	NYLOC NUT	6				



3.0 METRE R.H. ROTOR ILLUSTRATED

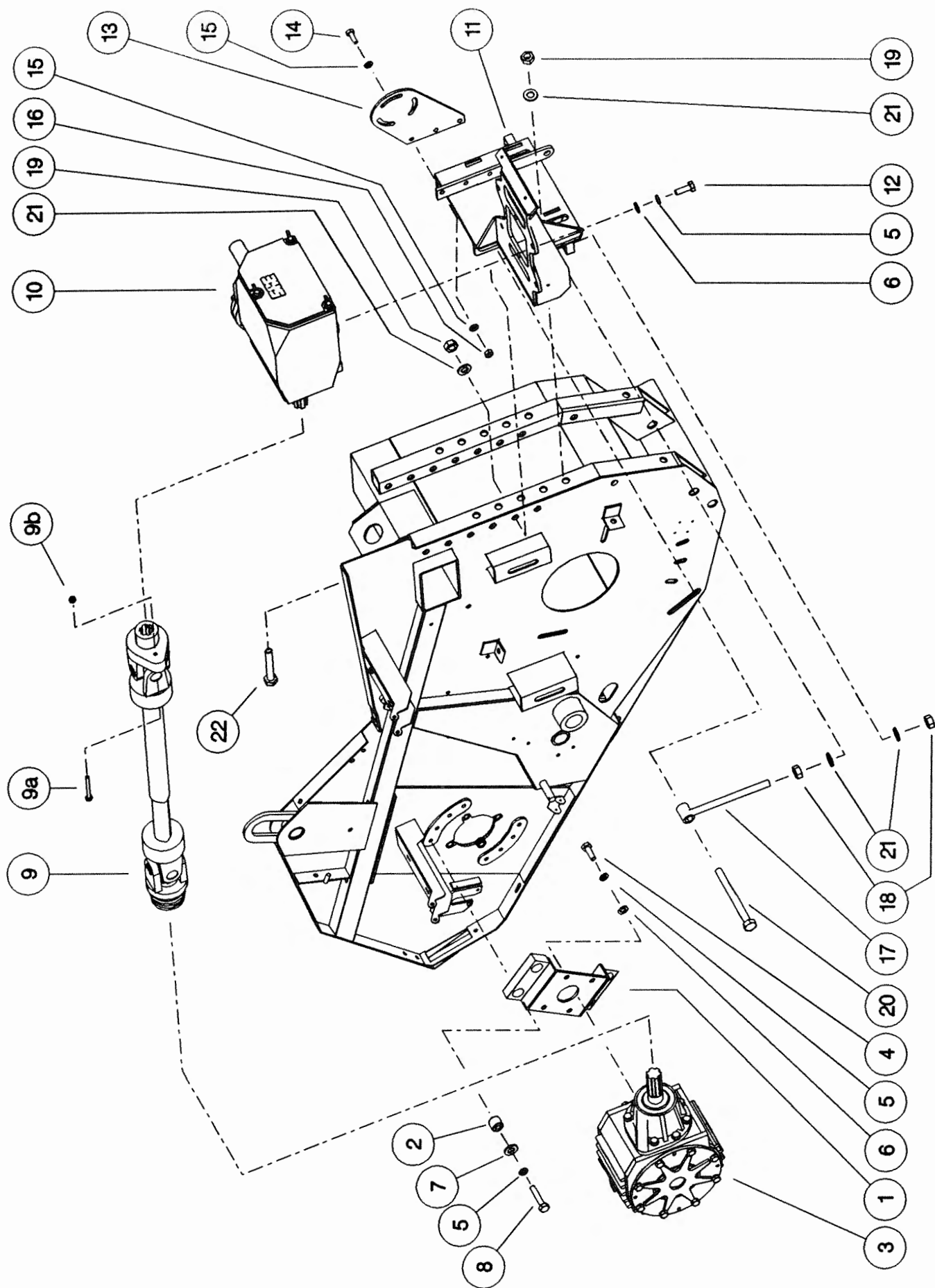
Shelbourne Reynolds Engineering Limited

ASSY NUMBER: 196078 01				ASSY DESCRIPTION: TORPEDO DIVIDERS FOR RX & CX MACHINES			
ITEM	PART NO	DESCRIPTION	QTY	ITEM	PART NO	DESCRIPTION	QTY
1	192533 01	DIVIDER ARM LH	1				
2	192533 02	DIVIDER ARM RH	1				
3	192537 01	DIVIDING PLATE LH	1				
4	192537 02	DIVIDING PLATE RH	1				
5	191770 01	NOSE CONE	2				
6	191862 01	SHOE	2				
7	HSS-0191	SETSCREW	8				
8	NUT-0265	NUT	8				
9	WSH-0015	WASHER	8				
10	HSS-0155	BOLT	2				
11	WSH-0058	WASHER	2				



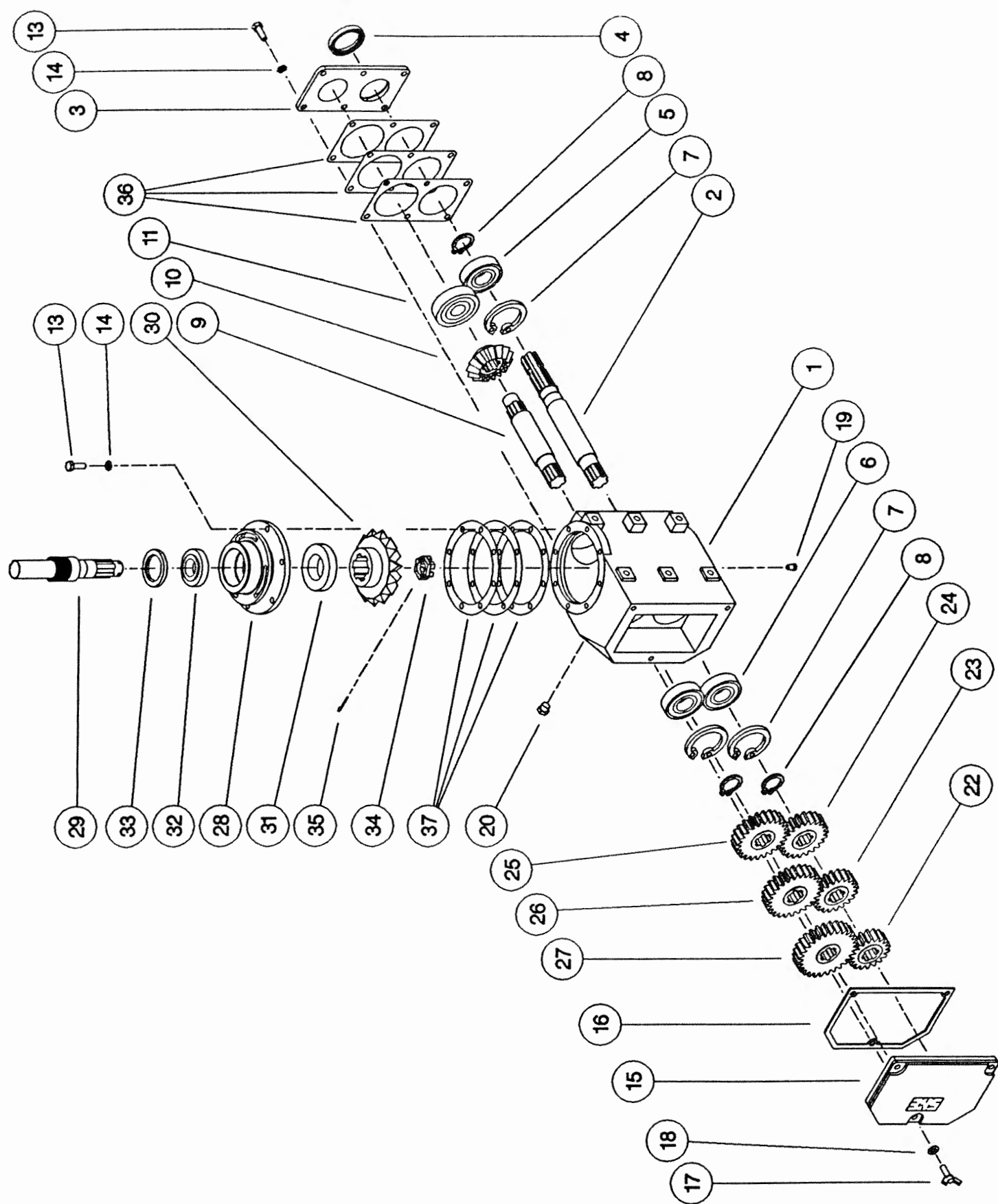
Shelbourne Reynolds Engineering Limited

ASSY NUMBER: 196081 01				ASSY DESCRIPTION: ROTOR DRIVE SUB (STD DRIVE RX & CX)			
ITEM	PART NO	DESCRIPTION	QTY	ITEM	PART NO	DESCRIPTION	QTY
1	191652 01	GEARBOX BRACKET	1				
2	BSH-1530	BUSH	4				
3	GEA-0095	BEVEL GEARBOX (SEE PARTS LIST GEA-0095)	1				
4	HSS-0235	SET SCREW	4				
5	WSH-0065	SPRING WASHER	14				
6	WSH-0018	PLAIN WASHER	10				
7	190119 04	PLAIN WASHER	4				
8	BLT-2247	BOLT	4				
9	PTO-09010	POWER SHAFT	1				
9a	BLT-2158	SHEAR BOLT					
9b	NUT-0164	NUT					
10	GEA-0085	SIX SPEED GEARBOX ASSY (SEE PARTS LIST GEA-0085)	1				
11	192091 01	GEARBOX BRACKET (ALUM. /FINS)	1				
12	HSS-0238	SET SCREW	6				
13	191680 01	DROP BOX SUPPORT PLATE	1				
14	HSS-0194	SET SCREW	3				
15	WSH-0015	PLAIN WASHER	6				
16	NUT-0265	NYLOC NUT	3				
17	191686 01	VARIABLE GB HEIGHT ADJUSTER	2				
18	NUT-0180	PLAIN NUT	4				
19	NUT-0271	NYLOC NUT	4				
20	BLT-2334	BOLT	2				
21	WSH-0024	PLAIN WASHER	8				
22	BLT-2316	BOLT	2				



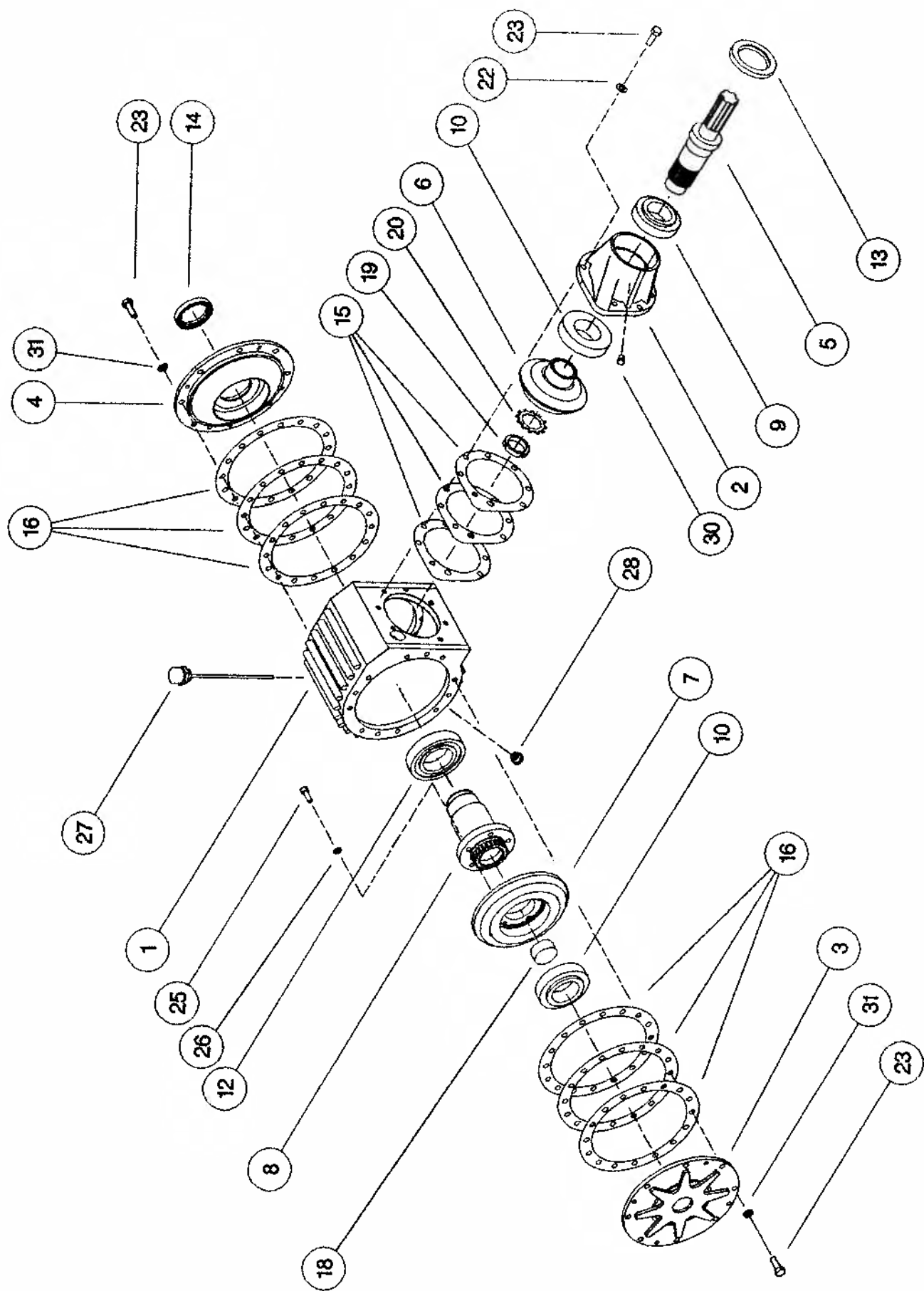
Shelbourne Reynolds Engineering Limited

ASSY NUMBER: GEA-0085				ASSY DESCRIPTION: 6 SPEED G. BOX ASSY CAST IRON (WITH DROP BOX)			
ITEM	PART NO	DESCRIPTION	QTY	ITEM	PART NO	DESCRIPTION	QTY
1	GEA-1203	GEARBOX CASING	1	35	PIN-1168	SPLIT PIN	1
2	GEA-1102	INPUT SHAFT	1	36	GEA-1302	GASKET SET	1
3	GEA-1204	SEAL HOUSING	1				
4	SEA-0550	ROTARY SHAFT SEAL	1				
5	BRG-6600	BEARING	1				
6	BRG-6601	BEARING	2				
7	CIR-3800	CIRCLIP	3				
8	CIR-2700	CIRCLIP	3				
9	GEA-1103	LAYSHAFT	1				
10	GEA-1002	BEVEL GEAR (15T)	1				
11	BRG-6800	BEARING	1				
12							
13	HSS-0194	SET SCREW	14				
14	WSH-0061	SPRING WASHER	14				
15	GEA-1206	REMOVABLE COVER	1				
16	GEA-1301	REMOVABLE COVER GASKET	1				
17	SCW-4750	WING SCREW	3				
18	WSH-1301	SHAKEPROOF WASHER	3				
19	FIT-0223	PLUG	1				
20	FIT-0218	BREATHER	1				
21							
22	GEA-1072	CHANGE GEAR (18T)	1				
23	GEA-1073	CHANGE GEAR (20T)	1				
24	GEA-1074	CHANGE GEAR (22T)	1				
25	GEA-1075	CHANGE GEAR (24T)	1				
26	GEA-1076	CHANGE GEAR (26T)	1				
27	GEA-1077	CHANGE GEAR (28T)	1				
28	191691 01	OUTPUT HOUSING	1				
29	191670 01	OUTPUT SHAFT (15T INVOLUTE)	1				
or	191820 01	OUTPUT SHAFT (28T INVOLUTE)	1				
30	GEA-1003	BEVEL GEAR (18T)	1				
31	BRG-6000	BEARING	1				
32	BRG-5700	BEARING	1				
33	SEA-0560	ROTARY SHAFT SEAL (15T INV)	1				
or	SEA-0565	ROTARY SHAFT SEAL (28T INV)	1				
34	NUT-0590	CASTLE NUT	1				



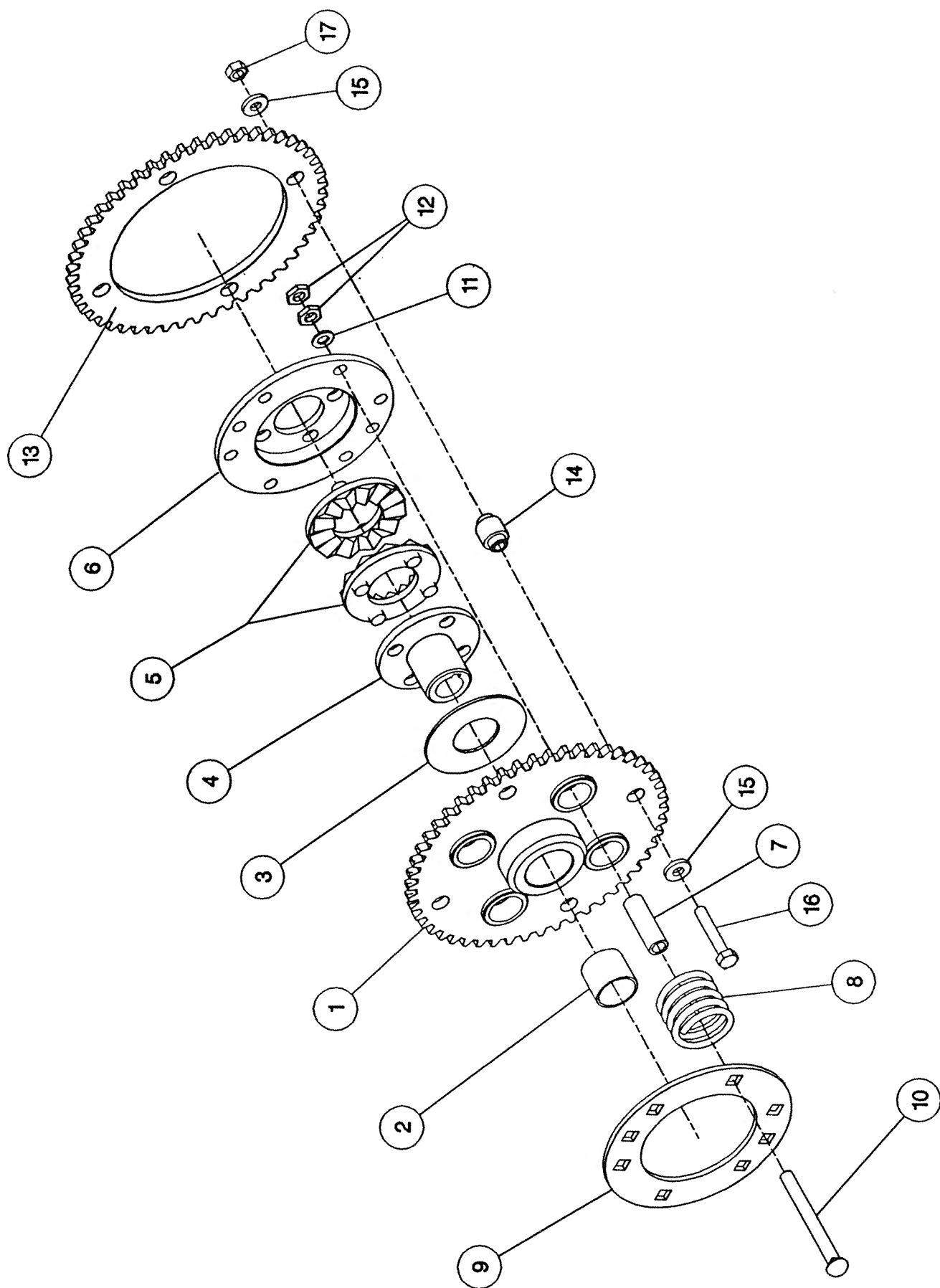
Shelbourne Reynolds Engineering Limited

ASSY NUMBER: GEA-0095				ASSY DESCRIPTION: BEVEL GEARBOX (1.5:1)			
ITEM	PART NO	DESCRIPTION	QTY	ITEM	PART NO	DESCRIPTION	QTY
1	191715 01	GEARBOX CASING	1				
2	191716 01	INPUT HOUSING	1				
3	191717 01	OUTSIDE END COVER	1				
4	191718 01	INSIDE END COVER	1				
5	191819 01	INPUT SHAFT (28T INVOLUTE)	1				
6	191798 01	BEVEL GEAR 20T (28T INV)	1				
7	191799 01	BEVEL GEAR 30T (25T INV)	1				
8	191800 01	OUTPUT SHAFT (25T INVOLUTE)	1				
9	BRG-7000	BEARING	1				
10	BRG-7020	BEARING	2				
11							
12	BRG-7040	BEARING	1				
13	SEA-0590	ROTARY SHAFT SEAL	1				
14	SEA-0600	ROTARY SHAFT SEAL	1				
15	191812	SHIM PACK (INPUT)	1				
16	191813	SHIM PACK (ENDS)	2				
17							
18	191735 01	SHAFT PLUG	1				
19	NUT-3010	LOCK RING	1				
20	WSH-6010	LOCK WASHER	1				
21							
22	WSH-1096	SHAKEPROOF WASHER	7				
23	HSS-1054	SET SCREW	23				
24							
25	SCW-0139	CAP HEAD SCREW	5				
26	WSH-0058	SPRING WASHER	5				
27	FIT-0254	BREATHING/DIP STICK	1				
28	FIT-0253	MAGNETIC DRAIN PLUG	1				
29							
30	FIT-0223	TAPER PLUG	1				
31	WSH-1145	SPRING WASHER	16				



Shelbourne Reynolds Engineering Limited

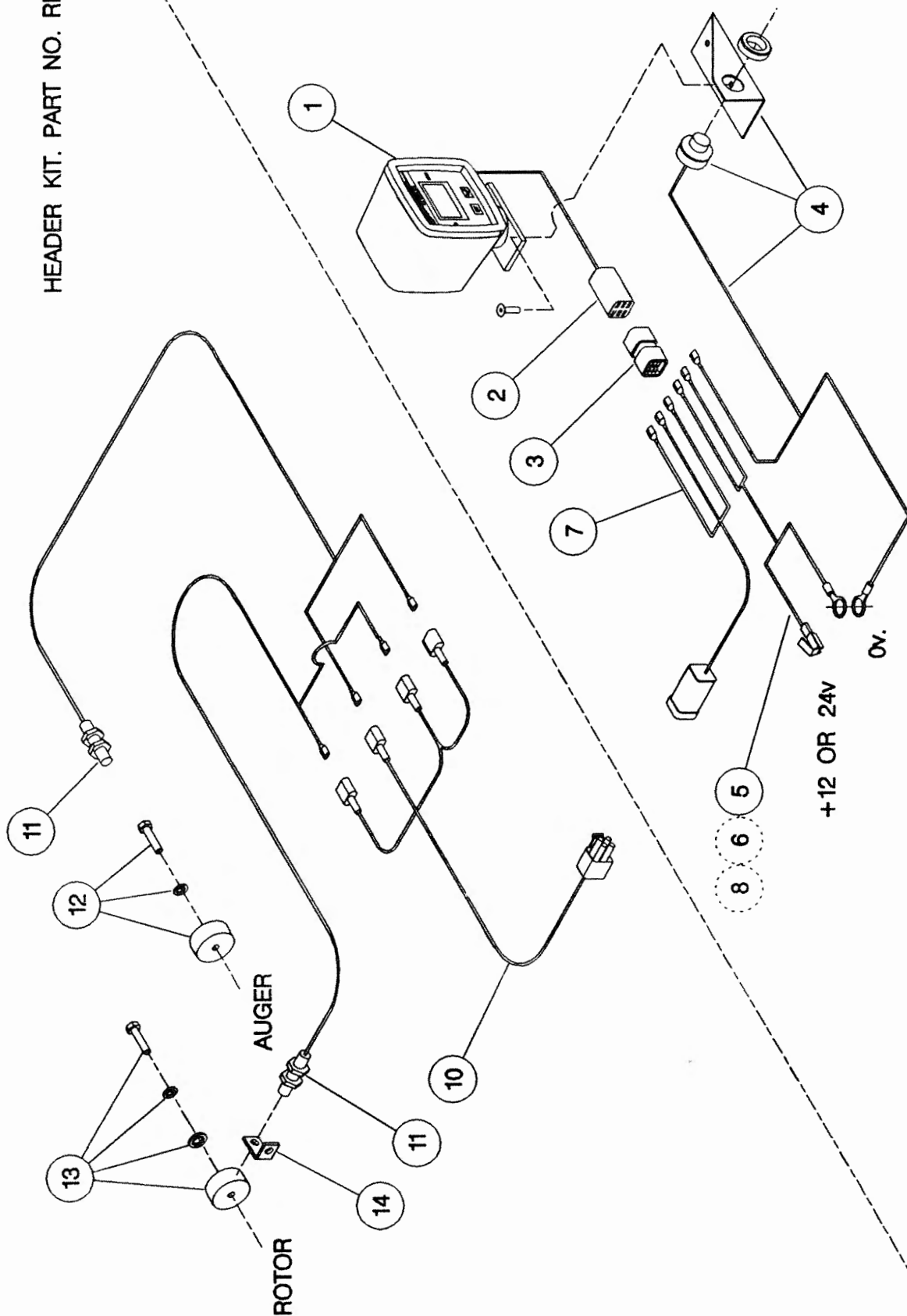
ASSY NUMBER:		KIT-00108		ASSY DESCRIPTION:		AUGER DRIVE SPROCKET/CLUTCH ASSY	
ITEM	PART NO	DESCRIPTION	QTY	ITEM	PART NO	DESCRIPTION	QTY
1	192018 01	SPROCKET ASSY 50T	1				
2	BSH-3019	BUSH	1				
3	192008 01	THRUST WASHER	1				
4	192013 01	CLUTCH HUB	1				
5	131005	CLUTCH PLATE	2				
6	192014 01	DRIVE DISC	1				
7	131073 02	SPACER	4				
8	131063	SPRING	4				
9	192009 01	FIXING RING	1				
10	BLTF12533	COACH BOLT	4				
11	WSH-0018	PLAIN WASHER	4				
12	NUT-0370	HALF NUT	8				
13	192254 01	SPROCKET 50T	1				
14	192253 01	SPACER	4				
15	190119 11	WASHER	8				
16	BLT-2200	BOLT	4				
17	NUT-0265	NYLOC NUT	4				



Shelbourne Reynolds Engineering Limited

ASSY NUMBER: RDS-0001/RDS-0005				ASSY DESCRIPTION: TACHO KIT			
ITEM	PART NO	DESCRIPTION	QTY	ITEM	PART NO	DESCRIPTION	QTY
1	RDS-0010	TACHO HEAD COMPLETE	1	13	RDS-0020	MAGNET CARRIER ,	1
2	RDS-0011	TACHO HEAD PLUG & ARMS	1			SET SCREW ,	1
3	RDS-0012	HARTING CONNECTOR &	1			PENNY WASHER &	1
		STICKER	1			SPRING WASHER	1
4	RDS-0013	AUDIBLE ALARM,	1	14	RDS-0021	ROTOR SENSOR BRACKET	1
		FIXING BRACKET &	1				
		SELF TAP. SCREWS	2				
5	RDS-0014	POWER CONNECTION LEAD	1				
6	FUS-0022	FUSE	1				
7	RDS-0015	COMBINE LEAD	1				
8	RDS-0016	24V-12V CONVERTER KIT (NOT INCLUDED IN RDS-0001)	1				
9							
10	RDS-0017	HEADER LEAD	1				
11	RDS-0018	SHAFT SENSOR	2				
12	RDS-0019	MAGNET ,	1				
		TAPTITE BOLT &	1				
		FIBRE WASHER	1				

HEADER KIT. PART NO. RDS - 0005



COMBINE KIT. PART NO. RDS - 0001

NOTE :

ITEM 6 IS USED IF POWER SUPPLY IS NOT FUSED.

ITEM 8 IS USED IF POWER SUPPLY IS 24V, -VE EARTH. (NOT INCLUDED IN RDS - 0001).

ITEM 4 (ALARM) IS BUILT INTO ITEM 1 (TACHO HEAD) ON LATER MODELS.

