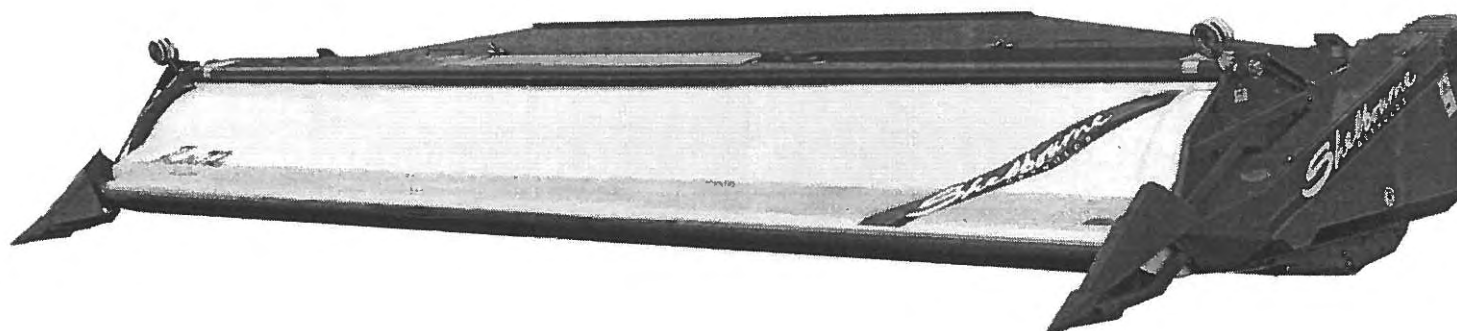


# *RX48 Shelbourne Header Rice Special*

## **PARTS MANUAL**



**Shelbourne Reynolds Engineering Ltd**  
**Stanton**  
**Bury St Edmunds**  
**Suffolk IP31 2AR**  
**England**

**Telephone: 01359 250415**  
**Fax. No: 01359 250464**

**(Stores direct 01359 251231)**  
**(Stores direct 01359 252031)**



**INVESTOR IN PEOPLE**

**ISSUE..1**  
**27.7.01**

## **SHELBOURNE HEADER PARTS MANUAL**

Your *Shelbourne* Header is designed to fit many different types of combine.

For this reason the machine number index is broken down into sections for identification. Your serial and machine numbers are listed below:

SHELBOURNE HEADER SERIAL NUMBER	_____
SHELBOURNE HEADER MACHINE NUMBER	_____
ADAPTOR PLATE ASSEMBLY	_____
DRIVE KIT	_____
HYDRAULIC FITTING KIT	_____
OTHER KIT OPTIONS	_____
	_____
	_____

This manual contains all parts common to the *Shelbourne* Header and is used in conjunction with the combine fittings manual, which contains the adaptor plate, and drive kit parts and fitting, and any other options available.

### **MACHINE IDENTIFICATION**

The *Shelbourne* Header machine identification number is engraved on a plate on the top right hand corner of the header.

The adaptor plate has a plate on the top right hand corner also with the adaptor plate assembly number engraved on it.

The drive kit can be identified by description, and use of the drive kit identification number marked above.

## ORDERING SPARE PARTS

To ensure that you order the correct part from your SRE dealer please use the following procedure.

### ALWAYS QUOTE THE MACHINE AND SERIAL NUMBERS WHEN ORDERING.

Refer to the front of this parts list book (machine assemblies), decide if the part you want is on:

*Shelbourne* Head  
Adaptor Kit  
Drive Kit

If your part is on the Adaptor Kit, identify by matching the part number from the adaptor plate with that in the top left hand corner of the parts lists. You will find the appropriate drawing accompanying the parts list.

If the part you require is on the drive kit, ensure that you have the parts listing for the correct combine model and width. Then progress through to the next drawing following that list, for indication of that part.

If the part you require is on the *Shelbourne* Head assembly, identify the appropriate assembly by matching the part number from the *Shelbourne* Head with the page with the same number marked on the top left hand side.

Use the following sub assembly numbers and descriptions to find the area of the machine that your part is required, i.e. you need a part which is fitted to the auger, your part will be in the auger assembly parts list.

Having decided which sub-assembly your part should be under, use the number beside that sub-assembly description which will begin with 1960-- -- to find the parts listing of the sub-assembly further on in the manual. The number will be printed in the top left hand corner, the sub-assemblies are in numerical order.

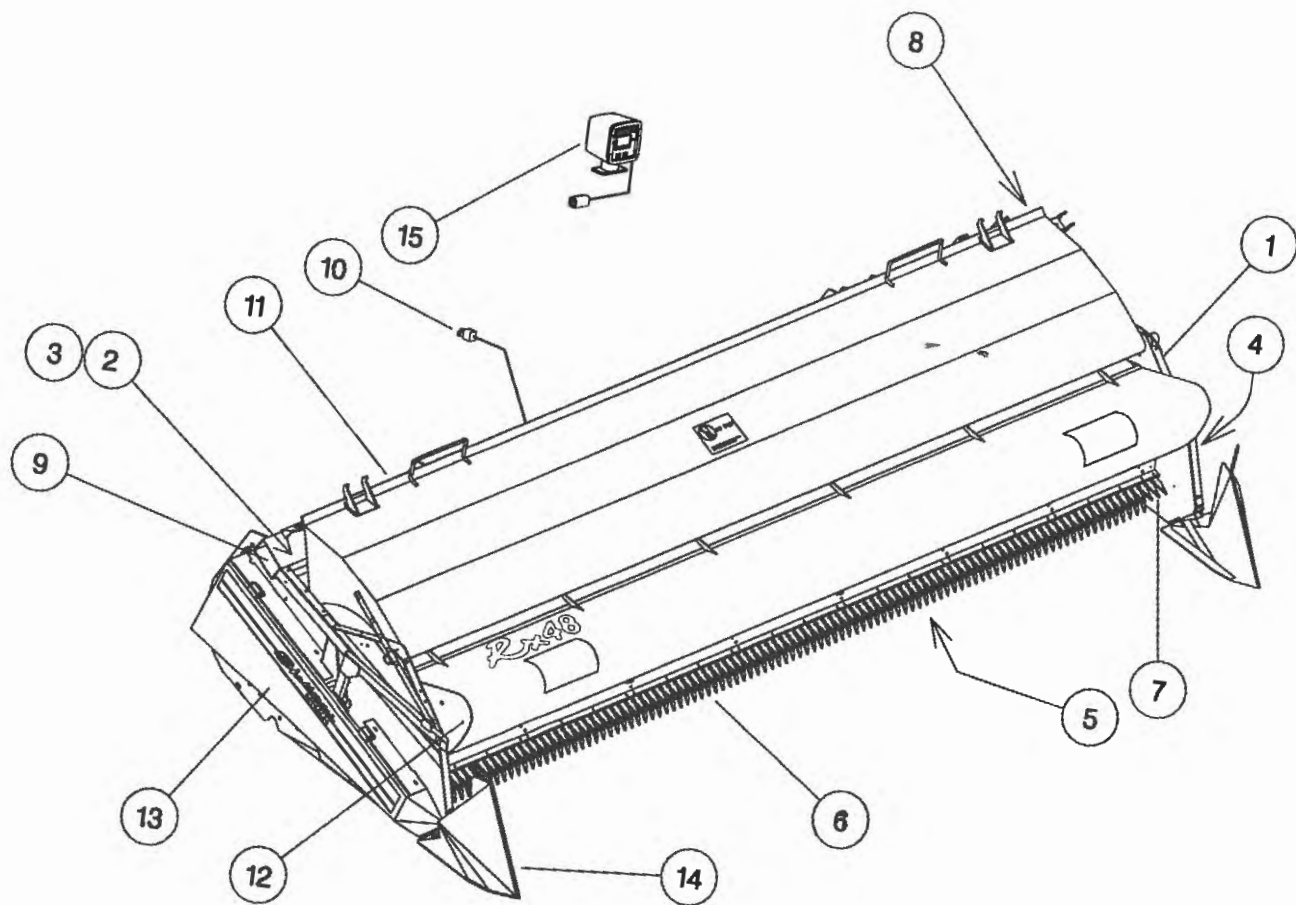
Having found the correct parts list, you will find the corresponding drawing by processing through the manual to the next drawing.

The drawings indicate the components by item numbers which you will find are repeated in the left hand side of your parts listing, and therefore referring to the correct part.

If the item within the sub-assembly is a further collection of parts (i.e. a KIT within a sub assembly) then the parts listing for this will be found just after the 1960-- -- sub-assemblies. These smaller assemblies will be in alphabetical and numerical order.

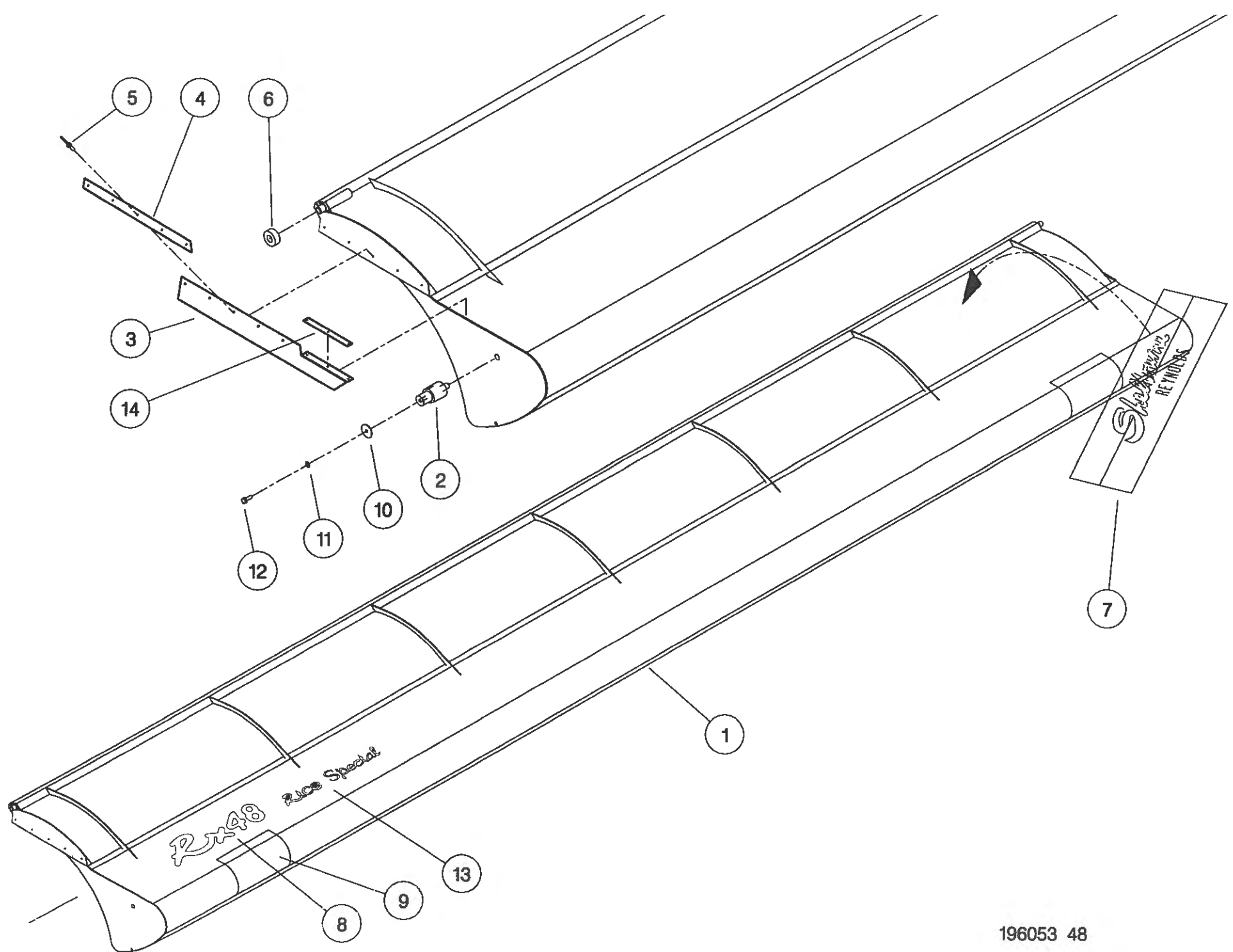
**Shelbourne Reynolds Engineering Limited**

ASSY NUMBER: 196553 08				ASSY DESCRIPTION: RX48 RICE SPECIAL HEADER			
ITEM	PART NO	DESCRIPTION	QTY	ITEM	PART NO	DESCRIPTION	QTY
1	196186 08	FRAME & PARTS	1				
2	196148 28	AUGER ASSY	1				
3	196102 05	AUGER MTG SUB	1				
4	196067 02	DRIVE COMPONENTS	1				
5	196123 09	SHAKERPAN SUB	1				
6	196151 08	STRIPPING ROTOR ASSY	1				
7							
8	196149 01	ROTOR MTG SUB	1				
9	196134 01	ROTOR/AUGER DRIVE SUB	1				
10	196140 08	HYDRAULICS	1				
11	RDS-0005	HEADER MONITORING KIT	1				
12	196127 28	HOOD SUB ASSY	1				
13	196053 48	ADJ CROP DEFLECTOR SUB	1				
14	196145 05	EMBLEMS & GUARDS	1				
15	196078 01	TORPEDO DIVIDER SUB	1				
OR	196132 01	SHORT DIVIDER SUB	2				
16	RDS-0001	COMBINE MONITOR KIT	1				



**Shelbourne Reynolds Engineering Limited**

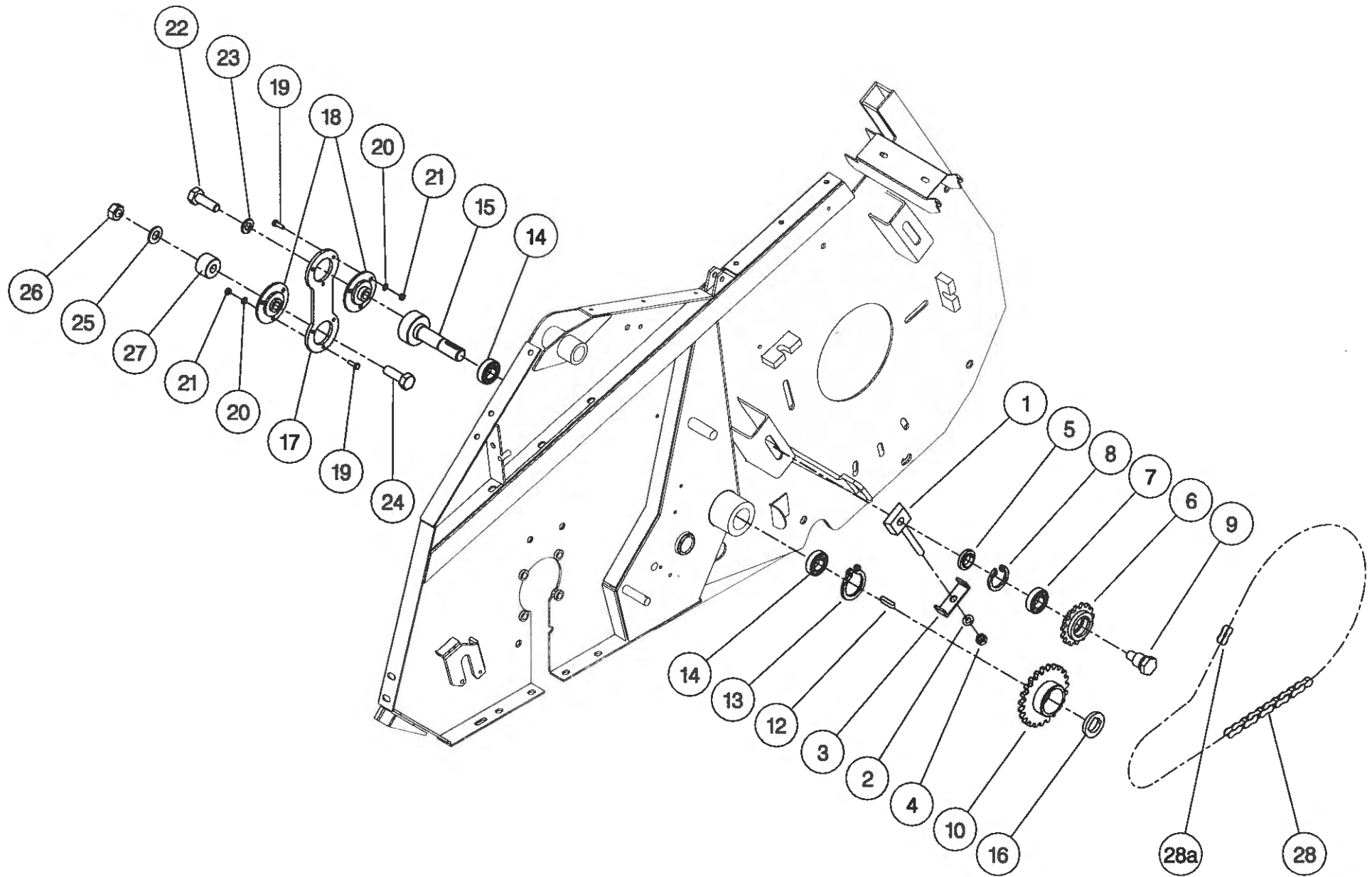
ASSY NUMBER:		196053 48	ASSY DESCRIPTION: ADJ.CROP DEFLECTOR SUB ASSY (RX48)				
ITEM	PART NO	DESCRIPTION	QTY	ITEM	PART NO	DESCRIPTION	QTY
1	193518 02	ADJ.CROP DEF	1				
2	190361 01	PIVOT BUSH	2				
3	195154 01	SEAL STRIP	2				
4	192038 01	CLAMP STRIP	2				
5	POP-0006	POP RIVET	16				
6	191642 01	ROLLER	2				
7	191981 01	EMBLEM	1				
8	192524 11	EMBLEM	1				
9	192718 01	TRANSFER	1				
10	190119 05	PLAIN WASHER	2				
11	WSH-0058	WASHER	2				
12	HSS-0140	SETSCREW	2				
13	193838 02	EMBLEM	1				
14	195140 01	FRONT CLAMP STRIP	2				



**Shelbourne Reynolds Engineering Limited**

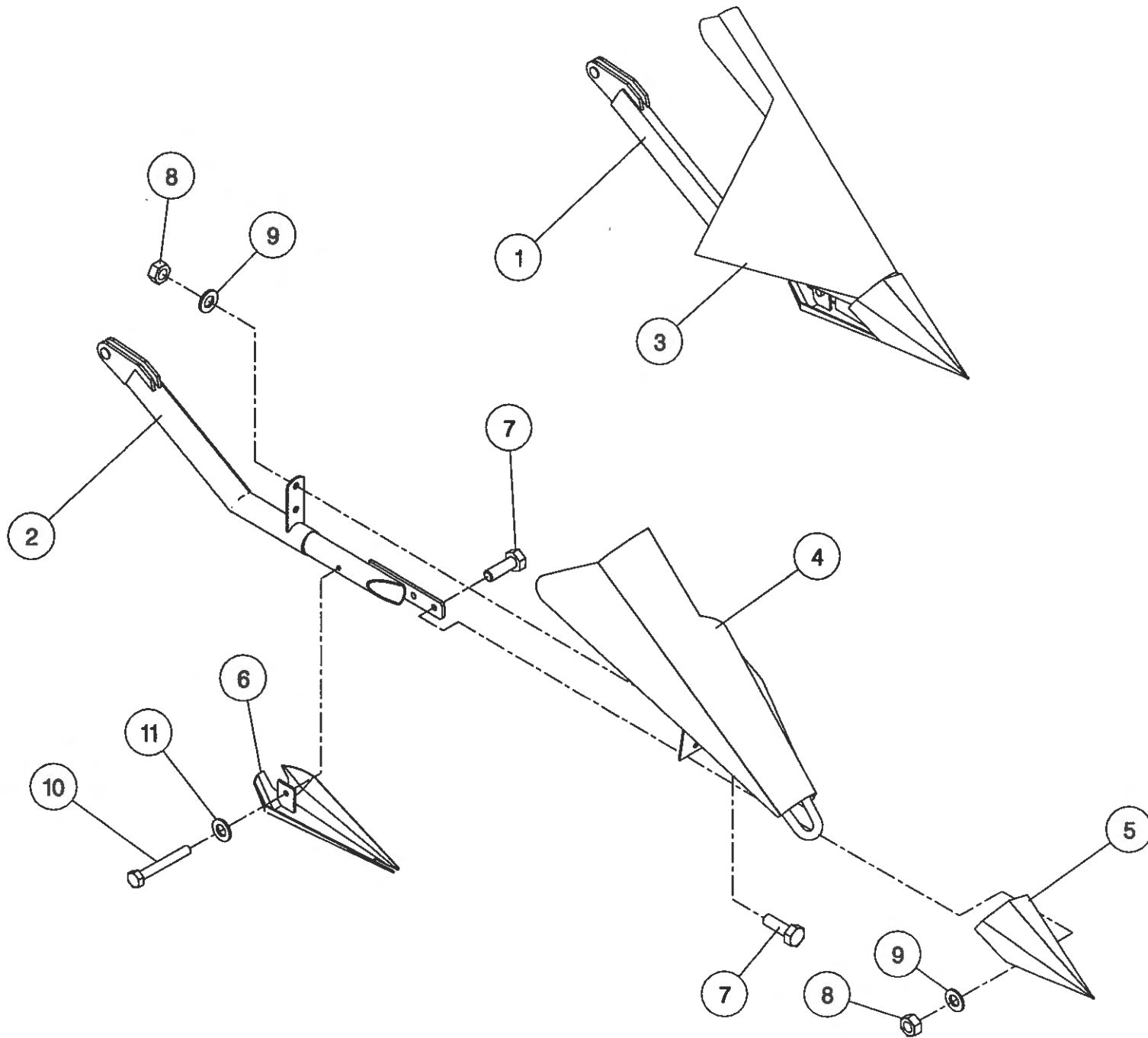
ASSY NUMBER: 196067 02				ASSY DESCRIPTION:DRIVE PARTS SHAKERPAN STD			
ITEM	PART NO	DESCRIPTION	QTY	ITEM	PART NO	DESCRIPTION	QTY
1	191777 01	IDLER ADJ SCREW	1				
2	WSH-0018	WASHER	1				
3	191774 01	PLATE	1				
4	NUT-0269	NUT	1				
5	191040 01	SPACER	1				
6	131014 01	SPROCKET IDLER	1				
7	BRG-1995	BEARING	1				
8	CIR-0470	CIRCLIP	1				
9	190060 06	IDLER SPINDLE	1				
10	192258 01	PAN DRIVE SPROCKET 25T	1				
11							
12	K0807035	KEY	1				
13	CIR-1125	CIRCLIP	1				
14	BRG-1994	BEARING	2				
15	192263 01	PAN DRIVE SHAFT	1				
16	BSHZ02553	LOCKING BUSH	1				
17	192265 01	PITMAN	1				
18	BRG-22500	BEARING	2				
19	HSS-0086	SETSCREW	6				
20	WSH-0009	FLAT WASHER	6				
21	NUT-0260	NUT	6				
22	HSS-0318	SETSCREW	1				
23	WSH-0070	SPRING WASHER	1				
24	BLT-2316	BOLT	1				
25	WSH-0024	FLAT WASHER	1				
26	NUT-0271	NUT	1				
27	192344 01	SPACER	1				
28	CHN-01682	CHAIN + JOINER	1				
28a	CHN-01600	CHAIN JOINER LINK	1				





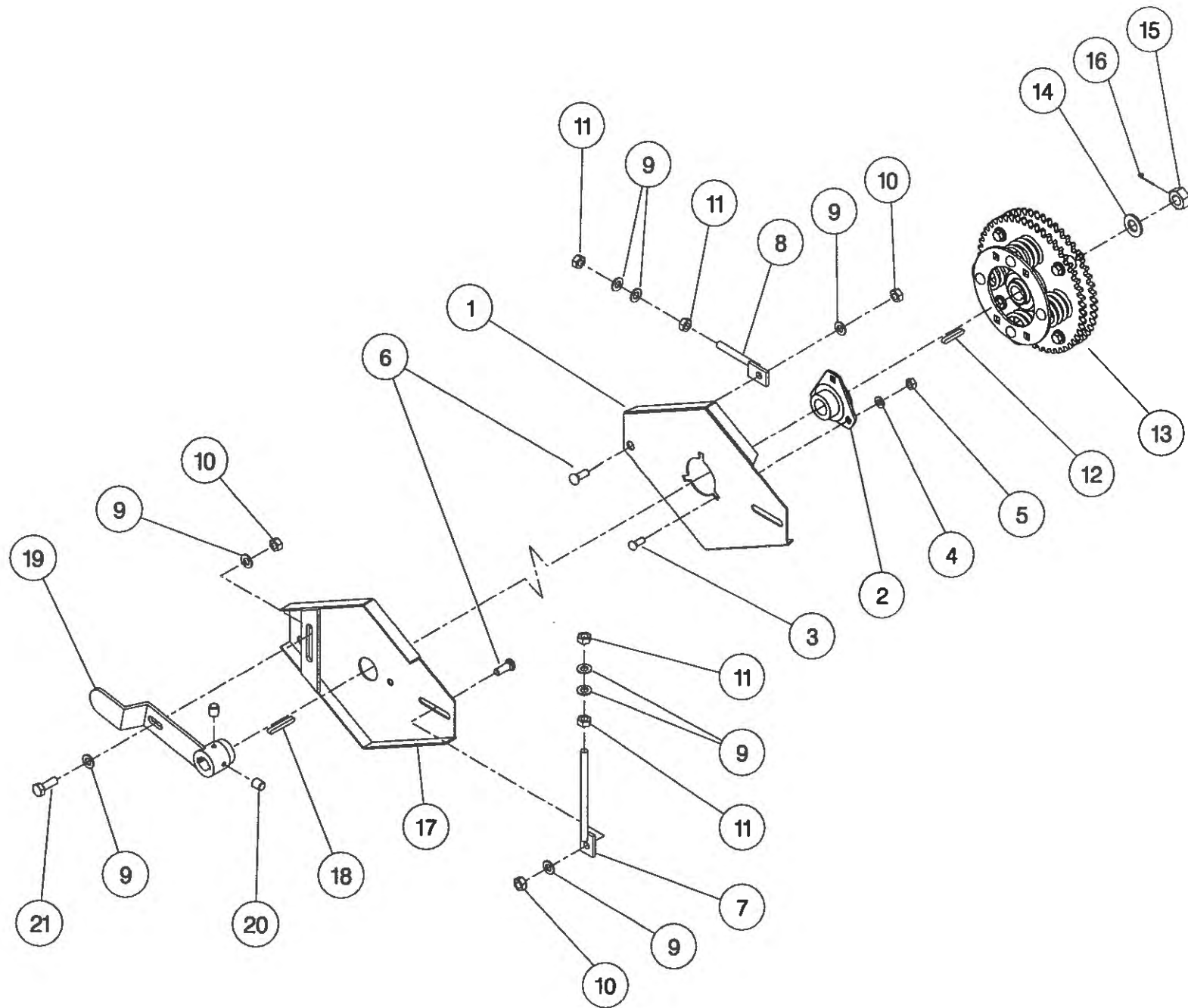
**Shelbourne Reynolds Engineering Limited**

ASSY NUMBER: 196078 01				ASSY DESCRIPTION: TORPEDO DIVIDERS FOR RX & CX MACHINES			
ITEM	PART NO	DESCRIPTION	QTY	ITEM	PART NO	DESCRIPTION	QTY
1	192533 01	DIVIDER ARM LH	1				
2	192533 02	DIVIDER ARM RH	1				
3	192537 01	DIVIDING PLATE LH	1				
4	192537 02	DIVIDING PLATE RH	1				
5	191770 01	NOSE CONE	2				
6	191862 01	SHOE	2				
7	HSS-0191	SETSCREW	8				
8	NUT-0265	NUT	8				
9	WSH-0015	WASHER	8				
10	HSS-0155	BOLT	2				
11	WSH-0058	WASHER	2				



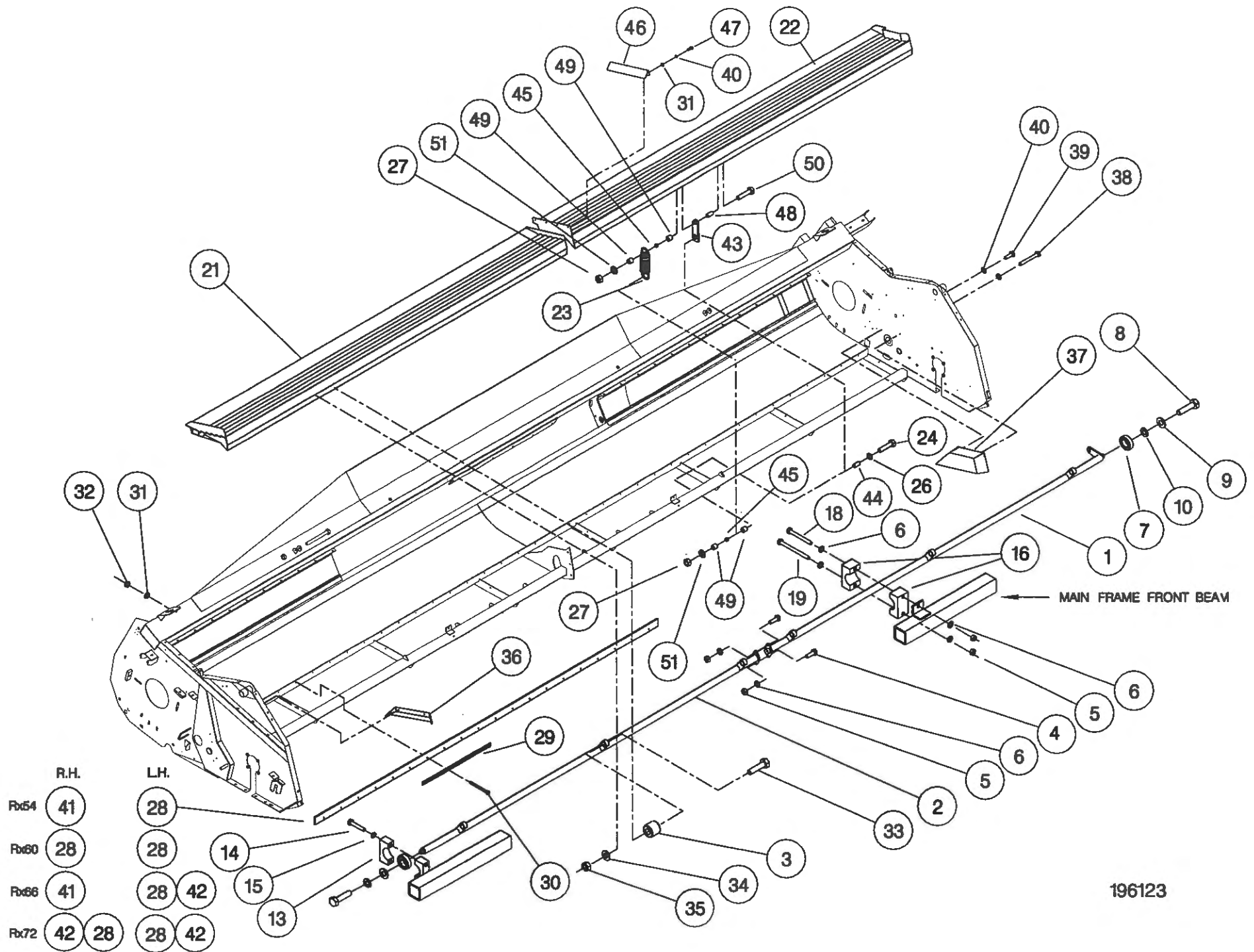
**Shelbourne Reynolds Engineering Limited**

ASSY NUMBER: 196102 05				ASSY DESCRIPTION: AUGER MOUNTING/DRIVE (RX3.6/4.2) 1997			
ITEM	PART NO	DESCRIPTION	QTY	ITEM	PART NO	DESCRIPTION	QTY
1	200035 03	SUPPORT PLATE L.H.	1				
2	BRG-0240	BEARING	1				
3	BLT-3745	COACH BOLT	3				
4	WSH-0015	PLAIN WASHER	3				
5	NUT-0265	NYLOC NUT	3				
6	BLT-3790	COACH BOLT	4				
7	192636 06	VERTICAL ADJUSTER	2				
8	192636 01	HORIZONTAL ADJUSTER	2				
9	WSH-0018	PLAIN WASHER	14				
10	NUT-0269	NYLOC NUT	5				
11	NUT-0170	PLAIN NUT	8				
12	K0807050	KEY	1				
13	KIT-00116	AUGER SLIP CLUTCH	1				
14	WSH-0030	PLAIN WASHER	1				
15	NUT-0580	CASTLE NUT	1				
16	PIN-1150	SPLIT PIN	1				
17	200038 01	SUPPORT PLATE R.H.	1				
18	K0807060	KEY	1				
19	200120 02	ADJUSTER ASSY	1				
20	SCW-4535	GRUB SCREW	2				
21	HSS-0241	SET SCREW	1				



**Shelbourne Reynolds Engineering Limited**

ASSY NUMBER: 196123 09				ASSY DESCRIPTION: SHAKER PAN SUB (RX54 - 1997)			
ITEM	PART NO	DESCRIPTION	QTY	ITEM	PART NO	DESCRIPTION	QTY
1	192287 01	TORSION TUBE L.H (3.0M)	1	38	BLT-2090	BOLT	2
2	192731 01	TORSION TUBE R.H (2.4M)	1	39	HSS-0084	SET SCREW	2
3	BSH-1530	RUBBER BUSH INSERT	6	40	WSH-0056	SPRING WASHER	8
				41	192751 01	SEAL STRIP	1
4	HSS-0191	SETSCREW	2	42			
5	NUT-0265	NYLOC NUT	10	43	192969 01	RETAINER	6
6	WSH-0015	FLAT WASHER	14	44	192970 01	TUBE	6
7	BRG-1995	BEARING	2	45	PSP-01201	PLASTIC SPACER	12
8	HSS-0315	SET SCREW	2	46	193293 01	COVER PLATE	1
9	WSH-0070	SPRING WASHER	2	47	HSS-0084	SET SCREW	4
10	WSH-0024	PLAIN WASHER	2	48	192970 02	TUBE	6
11				49	PSP-01800	PLASTIC SPACER	24
12				50	BLTA08530	BOLT	6
13	192264 02	CLAMP BLOCK TOP	2	51	WSH-1038	PENNY WASHER	12
14	BLT-2197	BOLT	4				
15	WSH-0061	SPRING WASHER	4				
16	192266 01	PIVOT BLOCK	4				
17							
18	BLT-2209	BOLT	4				
19	HSSA10680	SETSCREW	4				
20							
21	193313 01	SHAKER PAN ASSY R.H (2.4M)	1				
22	193311 01	SHAKER PAN ASSY L.H (3.0M)	1				
23	SPGA32221	SPRING	6				
24	BLTA08500	BOLT	6				
25							
26	WSH-0012	WASHER	12				
27	NUT-0263	NUT	12				
28	192274 01	SEAL STRIP	1				
29	192273 01	CLAMP STRIP	9				
30	BLT-2110	BOLT	36				
31	WSH-0009	FLAT WASHER	40				
32	NUT-0260	NYLOC NUT	36				
33	HSS-0265	SET SCREW	6				
34	WSH-0018	PLAIN WASHER	6				
35	NUT-0269	NYLOC NUT	6				
36	192355 01	END DEFLECTOR R.H.	1				
37	192354 01	END DEFLECTOR L.H.	1				

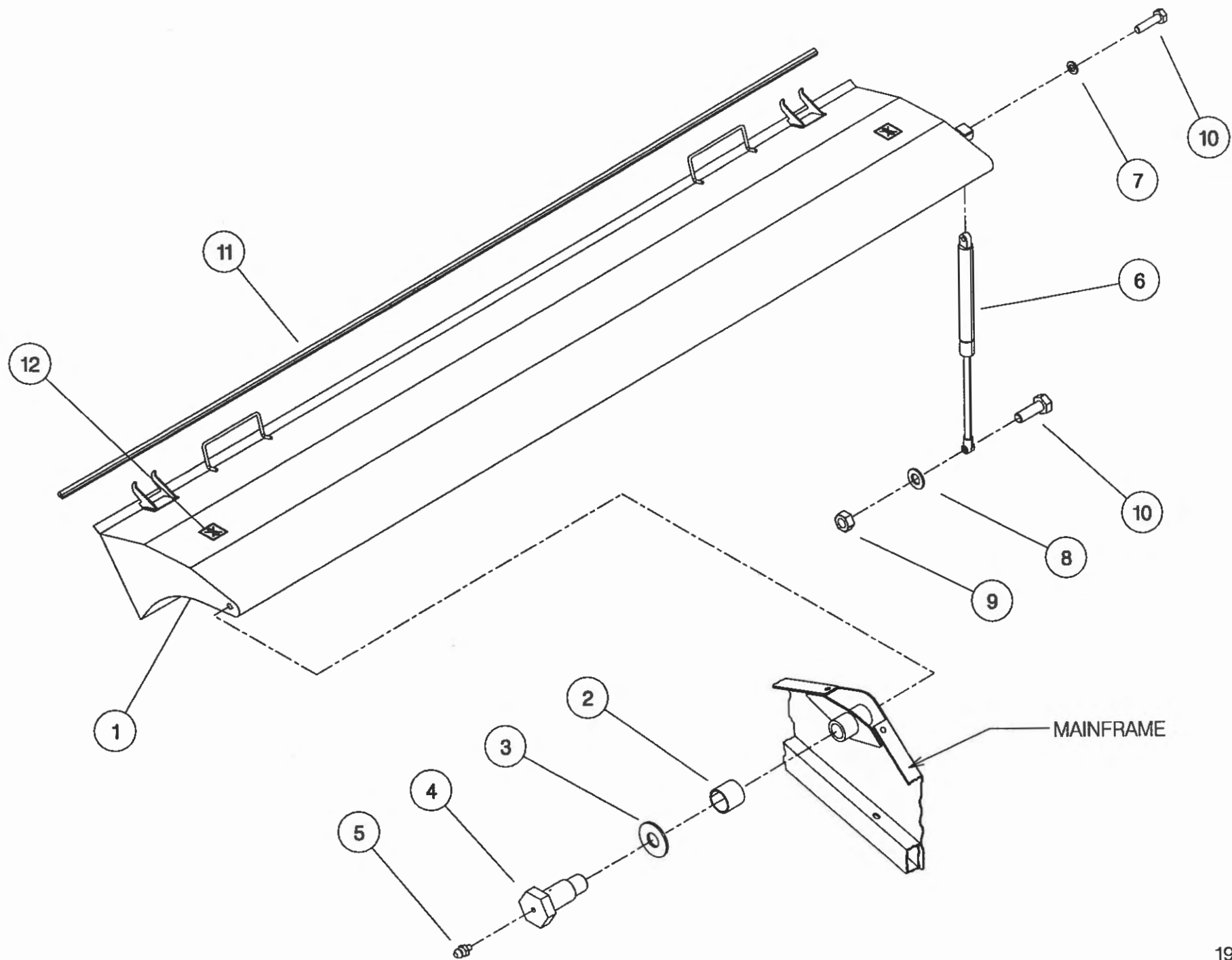


196123

**Shelbourne Reynolds Engineering Limited**

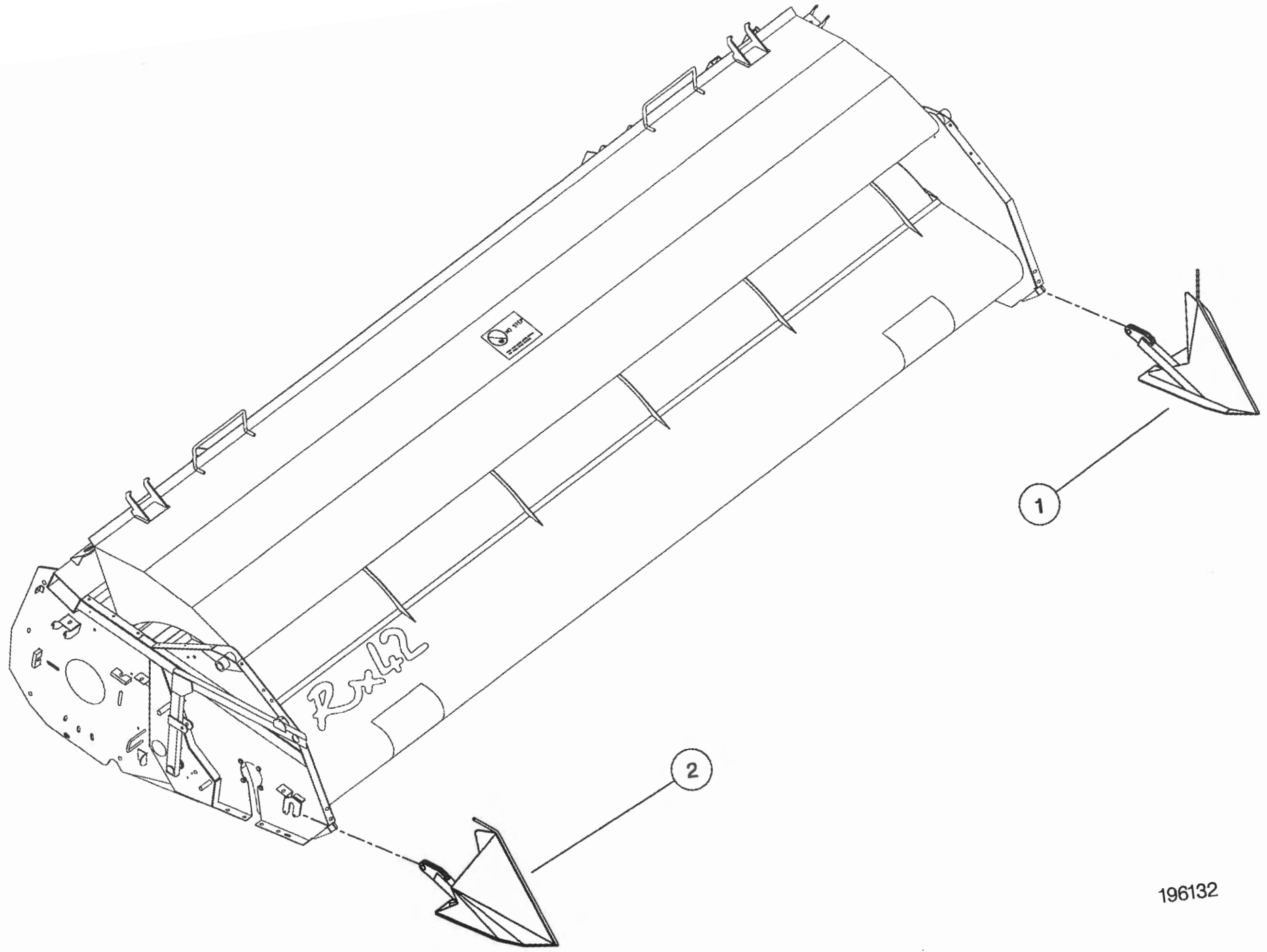
ASSY NUMBER: 196127 28				ASSY DESCRIPTION: TOP DOOR COWL ASSY (RX48)			
ITEM	PART NO	DESCRIPTION	QTY	ITEM	PART NO	DESCRIPTION	QTY
1	193519 16	COWL ASSY (STAINLESS) RX48	1				
2	BSH-3030	BUSH	2				
3	192813 01	LARGE WASHER	2				
4	192812 01	COWL PIN	2				
5	NIP-0001	GREASE ZERK	2				
6	GSTA14407	GAS STRUTT	1				
7	WSH-0061	WASHER	1				
8	WSH-0015	WASHER	1				
9	NUT-0265	NUT	1				
10	BLTA10290	BOLT	2				
11	EDS-11600	SEAL STRIP	4.8m				
12	192718 01	TRANSFER	2				





**Shelbourne Reynolds Engineering Limited**

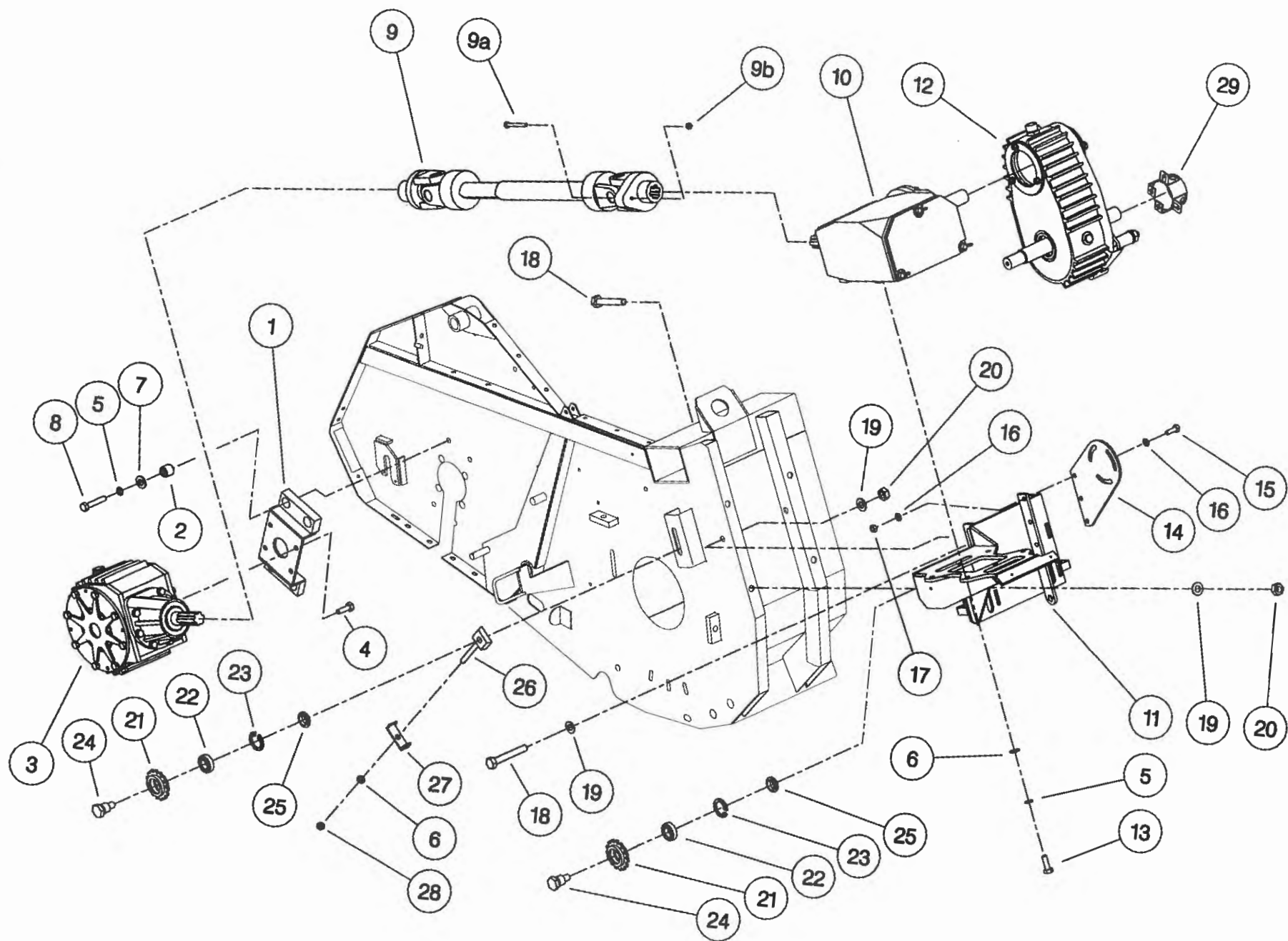
ASSY NUMBER: 196132 01				ASSY DESCRIPTION: SHORT DIVIDERS SUB (RX & CX)			
ITEM	PART NO	DESCRIPTION	QTY	ITEM	PART NO	DESCRIPTION	QTY
1	193348 01	SHORT DIVIDER LH	1				
2	193348 02	SHORT DIVIDER RH	1				



196132

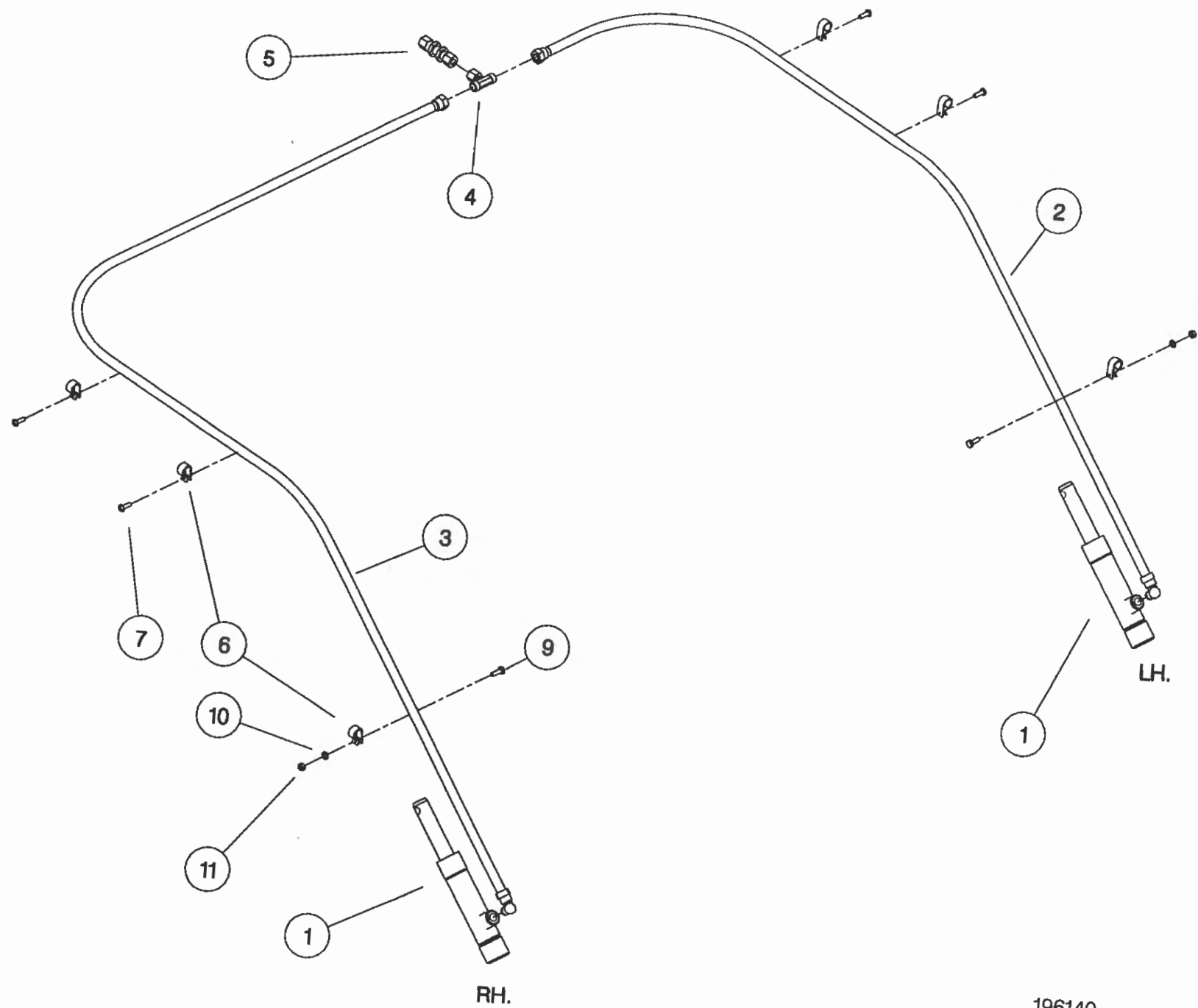
**Shelbourne Reynolds Engineering Limited**

ASSY NUMBER: 196134 01				ASSY DESCRIPTION: ROTOR/AUGER DRIVE 1997			
ITEM	PART NO	DESCRIPTION	QTY	ITEM	PART NO	DESCRIPTION	QTY
1	191652 01	GEARBOX BRACKET	1				
2	BSH-1530	BUSH	4				
3	GEA-0095	BEVEL GEARBOX	1				
4	HSSG12174	SET SCREW	4				
5	WSH-0065	SPRING WASHER	10				
6	WSH-0018	PLAIN WASHER	7				
7	190119 04	PLAIN WASHER	4				
8	BLTA12290	BOLT	4				
9	PTO-09011	POWER SHAFT	1				
9a	BLTA07320	SHEAR BOLT					
9b	NUT-0162	NUT					
10	GEA-0135	FIVE SPEED GEARBOX ASSY	1				
11	192091 01	GEARBOX BRACKET	1				
12	GEA-0101	DROPBOX ASSY	1				
13	HSS-0238	SET SCREW	6				
14	191680 01	DROP BOX SUPPORT PLATE	1				
15	HSS-0194	SET SCREW	3				
16	WSH-0015	PLAIN WASHER	6				
17	NUT-0265	NYLOC NUT	3				
18	HSS-0330	SETSCREW	4				
19	WSH-0024	PLAIN WASHER	6				
20	NUT-0271	NYLOC NUT	4				
21	131014 01	SPROCKET IDLER	2				
22	BRG-1995	BEARING	2				
23	CIR-0470	CIRCLIP	2				
24	190060 06	IDLER SPINDLE	2				
25	191040 01	IDLER SPACER	2				
26	191777 01	IDLER ADJ SCREW	1				
27	191774 01	PLATE	1				
28	NUT-0269	NUT	1				
29	KIT-00525	PTO GUARD KIT	1				



**Shelbourne Reynolds Engineering Limited**

ASSY NUMBER: 196140 08				ASSY DESCRIPTION: HYDRAULIC CIRCUIT SUB 4.8M			
ITEM	PART NO	DESCRIPTION	QTY	ITEM	PART NO	DESCRIPTION	QTY
1	REF	HYDRAULIC RAM	2				
2	HHBC22610	HYDRAULIC HOSE LH	1				
3	HHBC47610	HYDRAULIC HOSE RH	1				
4	HPPD07100	HYD.TEE	1				
5	FIT-0213	HYD.BULKHEAD	1				
6	CLP-01012	P CLIP	6				
7	SCW-5180	SELF TAP	4				
9	HSS-0086	SETSCREW	2				
10	WSH-0009	PLAIN WASHER	2				
11	NUT-0260	NYLOC NUT	2				

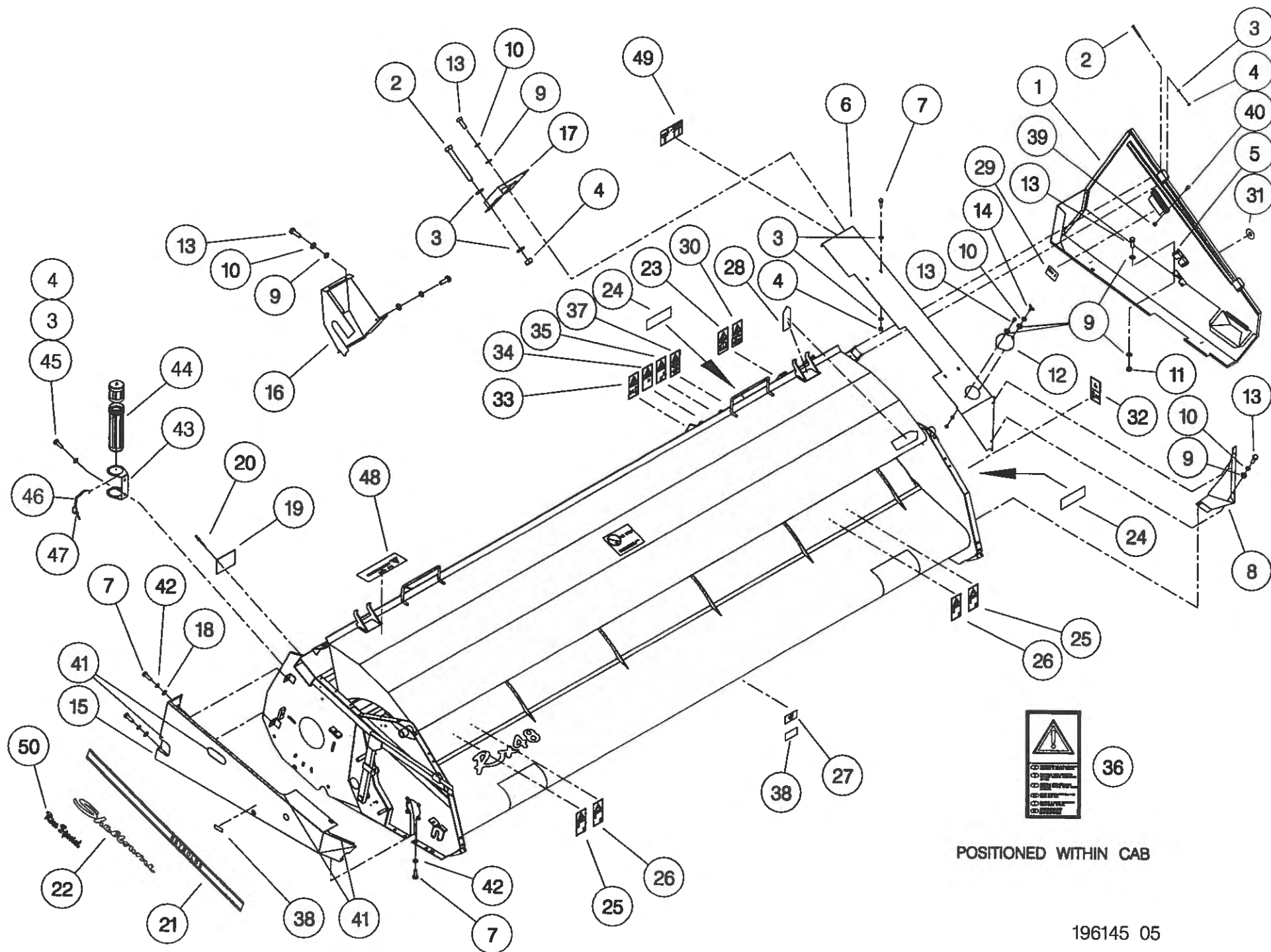


196140

**Shelbourne Reynolds Engineering Limited**

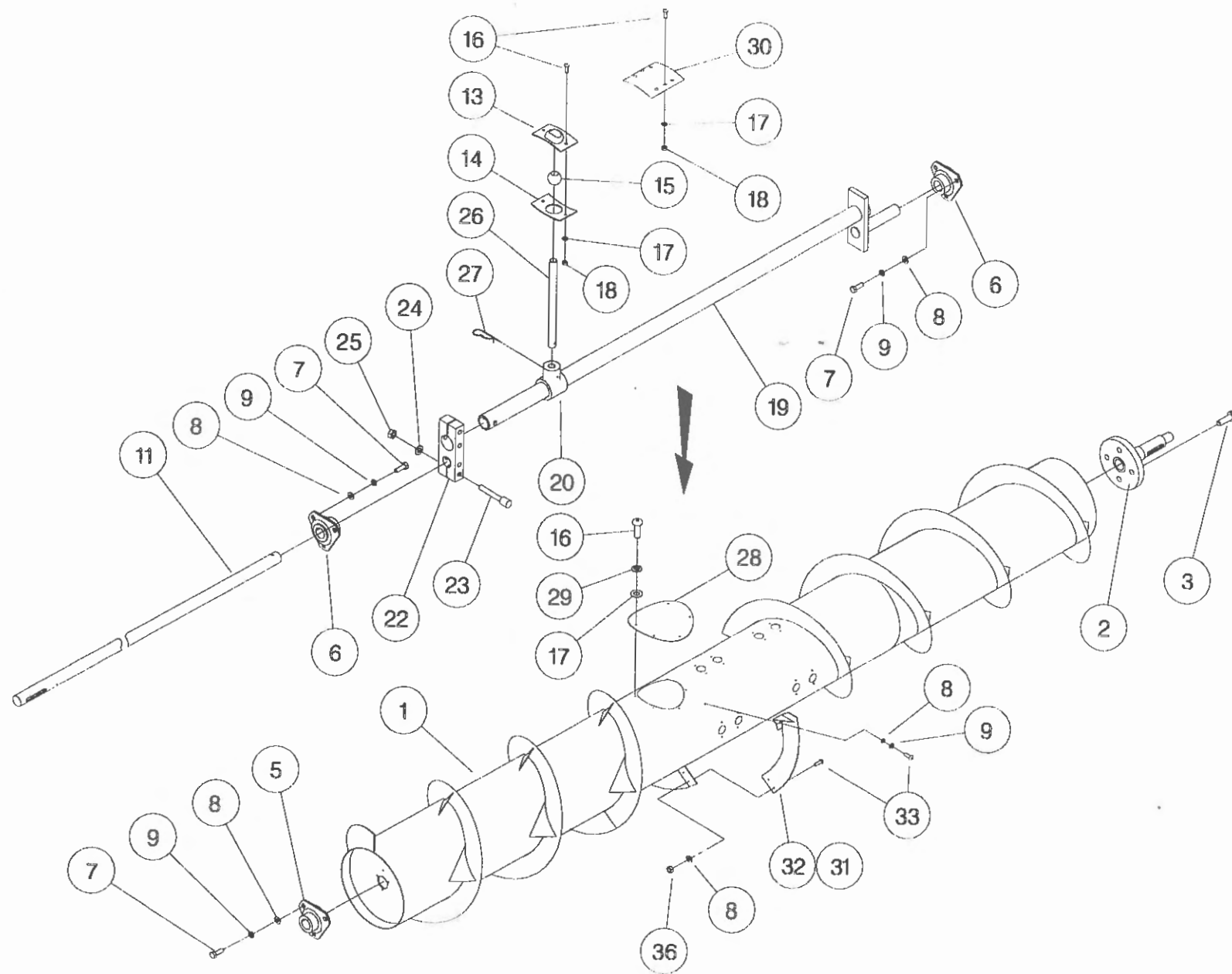
ASSY NUMBER: 196145 05				ASSY DESCRIPTION: EMBLEMS AND GUARDS SUB (RX48RS)			
ITEM	PART NO	DESCRIPTION	QTY	ITEM	PART NO	DESCRIPTION	QTY
1	193338 01	L.H.GUARD	1	39	NUT-0162	NUT	10
2	BLTA08470	BOLT	3	40	BLTA07320	SHEARBOLT	10
3	WSH-0012	PLAIN WASHER	14	41	EDS-11400	EDGING STRIP	2.4
4	NUT-0263	NYLOC NUT	10	42	WSH-0058	WASHER	4
5	LTC-00040	SLAM LATCH	1	43	194364 01	CANNISTER BRACKET	1
6	193297 01	L.H. TOP COVER	1	44	WDA-00025	CANNISTER	1
7	HSS-0140	SET SCREW	9	45	HSS-0145	SET SCREW	2
8	192570 01	FRONT DEFLECTOR L.H.	1	46	CHN-0145	CHAIN	0.17
9	WSH-0009	PLAIN WASHER	10	47	RCL-0015	R CLIP	1
10	WSH-0056	SPRING WASHER	8	48	195104 01	EMBLEM	2
11	NUT-0260	NYLOC NUT	3	49	194103 01	EMBLEM	1
12	191355 01	COVER	1	50	193838 02	EMBLEM	2
13	HSS-0084	SET SCREW	12				
14	SCW-4700	WING SCREW	1				
15	193478 01	R.H.GUARD	1				
16	195067 01	REAR DRIVE GUARD	1				
17	193346 01	REAR UPPER GUARD	1				
18	WSH-1038	PENNY WASHER	3				
19	191359 01	IDENTIFICATION PLATE	1				
20	POP-0006	POP RIVET	4				
21	191983 01	EMBLEM	2				
22	191982 01	EMBLEM	2				
23	610257 01	EMBLEM	1				
24	127075 12	EMBLEM	2				
25	193388 01	EMBLEM	2				
26	193389 01	EMBLEM	2				
27	193395 01	EMBLEM	4				
28	190702 04	EMBLEM	4				
29	191940 01	EMBLEM	1				
30	610250 01	EMBLEM	1				
31	192953 01	EMBLEM	1				
32	193392 01	EMBLEM	1				
33	193393 01	EMBLEM	1				
34	193390 01	EMBLEM	1				
35	193391 01	EMBLEM	1				
36	193394 01	EMBLEM	1				
37	193387 01	EMBLEM	1				
38	127075 16	EMBLEM	7				





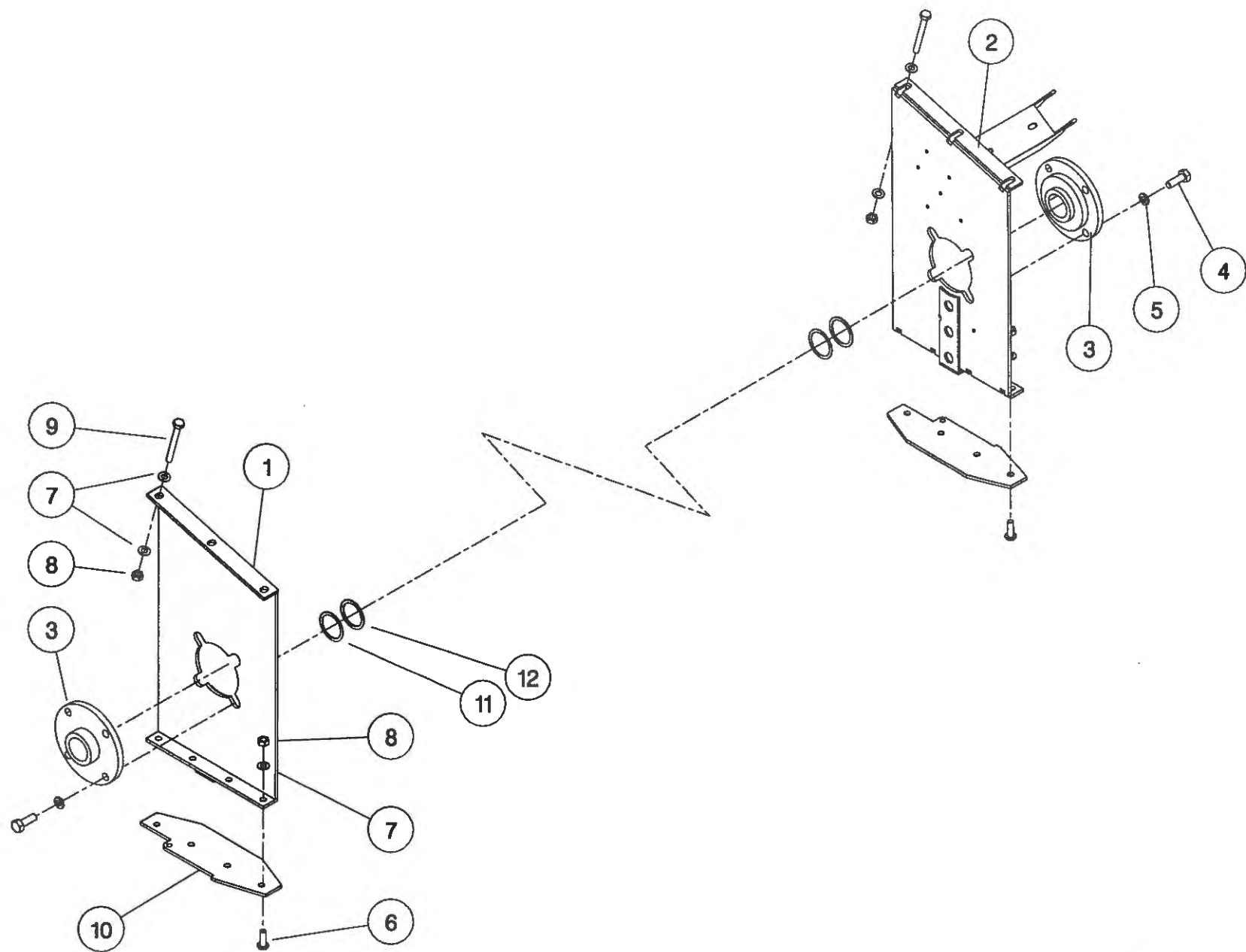
**Shelbourne Reynolds Engineering Limited**

ASSY NUMBER: 196148 28				ASSY DESCRIPTION: HARD FLIGHT AUGER ASSY 4.8M			
ITEM	PART NO	DESCRIPTION	QTY	ITEM	PART NO	DESCRIPTION	QTY
1	195371 01	AUGER W.ASSY.	1	27	AUG-03000	HAIRPIN COTTER	
2	192011 01	AUGER DRIVE SHAFT	1			(16 FINGERS OPTION)	16
3	HSSF12204	SET SCREW	4	OR		(20 FINGERS OPTION)	20
4				OR		(24 FINGERS OPTION)	24
5	BRG-0218	BEARING	1	28	193203 01	COVER PLATE	2
6	BRG-7080	BEARING	2	29	WSH-0056	SPRING WASHER	12
7	HSS-0140	SET SCREW	9	30	190735 01	BLANKING PLATE	
8	WSH-0012	PLAIN WASHER	15			(16 FINGERS OPTION)	8
9	WSH-0058	SPRING WASHER	11	OR		(20 FINGERS OPTION)	4
10				OR		(24 FINGERS OPTION)	0
11	192223 06	AUGER SHAFT	1	31	194363 01	AUGER FLIGHT EXTENSION LH	1
12				32	194363 02	AUGER FLIGHT EXTENSION RH	1
13	AUG-01000	UPPER FINGER PL		33	SCBA08172	BUT. SCKT HD SCREW	6
	UP TO 2000	(16 FINGERS OPTION)	16	34			
OR		(20 FINGERS OPTION)	20	35			
OR		(24 FINGERS OPTION)	24	36	NUT-0263	NUT	4
14	AUG-01500	LOWER FINGER PL		37	AUG-00500	AUGER FINGER GUIDE (2001 ON)	
	UP TO 2000	(16 FINGERS OPTION)	16			(16 FINGERS OPTION)	16
OR		(20 FINGERS OPTION)	20			(20 FINGERS OPTION)	20
OR		(24 FINGERS OPTION)	24			(24 FINGERS OPTION)	24
15	AUG-02000	FINGER GUIDE					
	UP TO 2000	(16 FINGERS OPTION)	16				
OR		(20 FINGERS OPTION)	20				
OR		(24 FINGERS OPTION)	24				
16	SCW-4960	BUTT.HD.SKT.SCREW	48				
17	WSH-0009	PLAIN WASHER	60				
18	NUT-0260	NYLOC NUT	48				
19	192311 01	AUGER CRANK	1				
20	AUG-02500	FINGER HOLDER	24				
21	SCW-4959	BUTT.HD.SKT.SCREW	12				
22	192307 01	AUGER CLAMP	1				
23	SCCA10412	CAP HD SKT SCREW	4				
24	WSH-0015	PLAIN WASHER	4				
25	NUT-0265	NYLOC NUT	4				
26	192310 01	FINGER					
		(16 FINGERS OPTION)	16				
OR		(20 FINGERS OPTION)	20				
OR		(24 FINGERS OPTION)	24				



**Shelbourne Reynolds Engineering Limited**

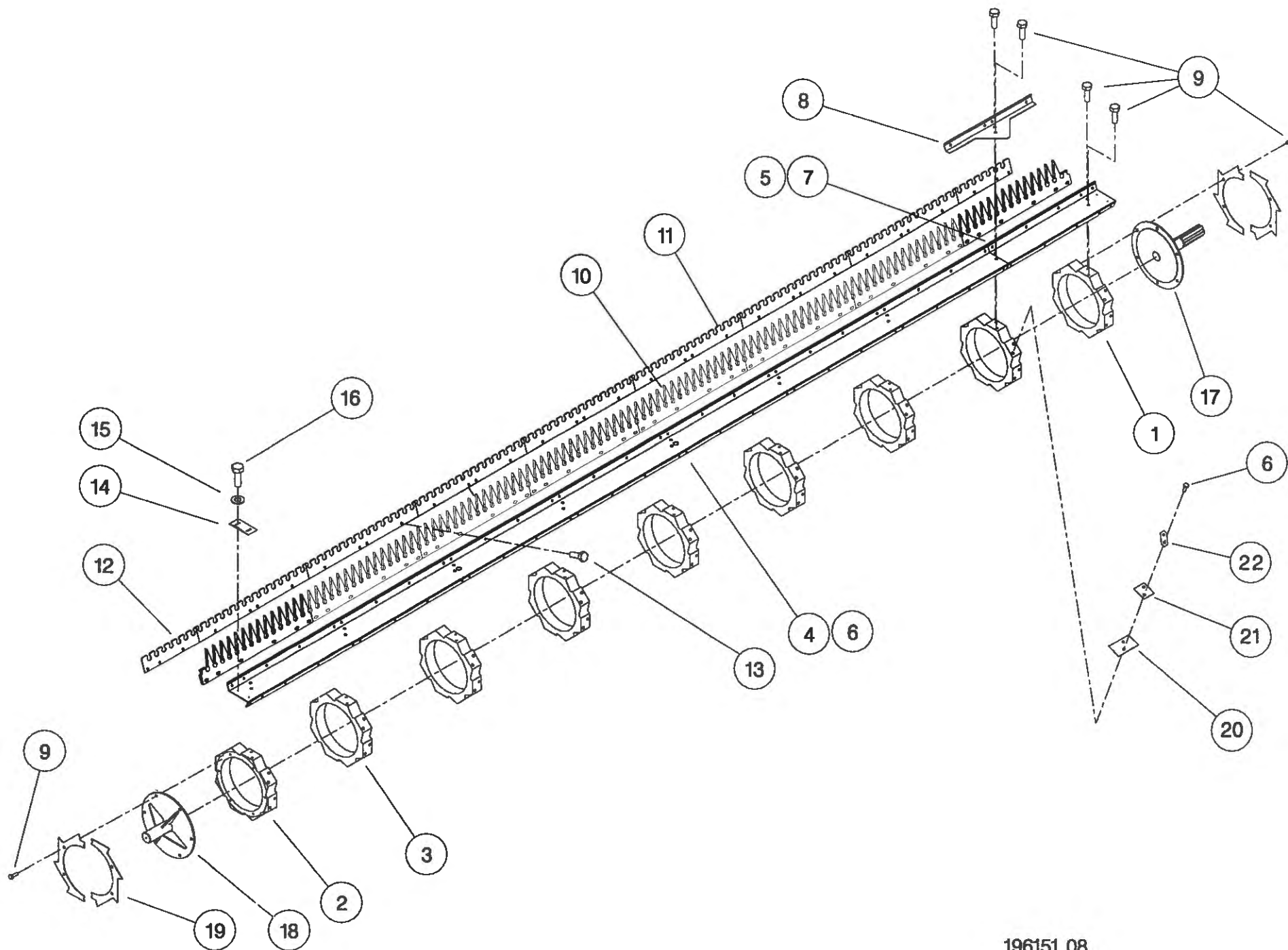
ASSY NUMBER: 196149 01				ASSY DESCRIPTION: RX ROTOR MTG SUB			
ITEM	PART NO	DESCRIPTION	QTY	ITEM	PART NO	DESCRIPTION	QTY
1	193504 01	ROTOR MTG PLATE R.H	1				
2	193295 01	ROTOR MTG PLATE L.H	1				
3	BRG-3275	BEARING	2				
4	HSS-0238	SETSCREW	8				
5	WSH-0065	WASHER	8				
6	SCW-0515	SCREW	8				
7	WSH-0015	WASHER	20				
8	NUT-0265	NUT	14				
9	BLTA10520	BOLT	6				
10	193220 01	DIVIDING PLATE	2				
11	192876 01	SHIM					
12	192876 02	SHIM					



196149

**Shelbourne Reynolds Engineering Limited**

ASSY NUMBER: 196151 08				ASSY DESCRIPTION:STRIPPING ROTOR ASSY 4.8m			
ITEM	PART NO	DESCRIPTION	QTY	ITEM	PART NO	DESCRIPTION	QTY
1	192892 01	OUTER HUB CASTING L.H.	1				
2	192892 02	OUTER HUB CASTING R.H.	1				
3	192892 03	INNER HUB CASTING	7				
4	193526 01	ROTOR SECTION 4.2 LH	4				
5	193526 07	ROTOR SECTION 0.6 LH	4				
6	193527 01	ROTOR SECTION 4.2 RH	4				
7	193527 07	ROTOR SECTION 0.6 RH	4				
8	193528 01	STRENGTHENING PLATE	8				
9	HSSG10204	SETSCREW	156				
10	191968 02	ELITE ELEMENT RICE	64				
OR	193087 01	ELITE ELEMENT	64				
11	192291 01	ANTI WEAR STRIP CTR.	56				
OR	192291 07	S-TYPE STRIP CTR	56				
12	192291 02	ANTI WEAR STRIP END	16				
OR	192291 08	S-TYPE STRIP END	16				
13	HSSF08174	SETSCREW	272				
14	192679 01	ANTI WRAP PLATE	16				
15	WSH-1034	PENNY WASHER	32				
16	SCW-5180	SELF TAP SCREW	32				
17	192897 01	DRIVE SHAFT W/A	1				
18	192899 01	IDLE SHAFT W/A	1				
19	192959 01	OUTER CLAMP RING	4				
20	193118 01	BALANCE WEIGHT	10				
21	193118 02	BALANCE WEIGHT	4				
22	193382 01	BALANCE WEIGHT	2				



**Shelbourne Reynolds Engineering Limited**

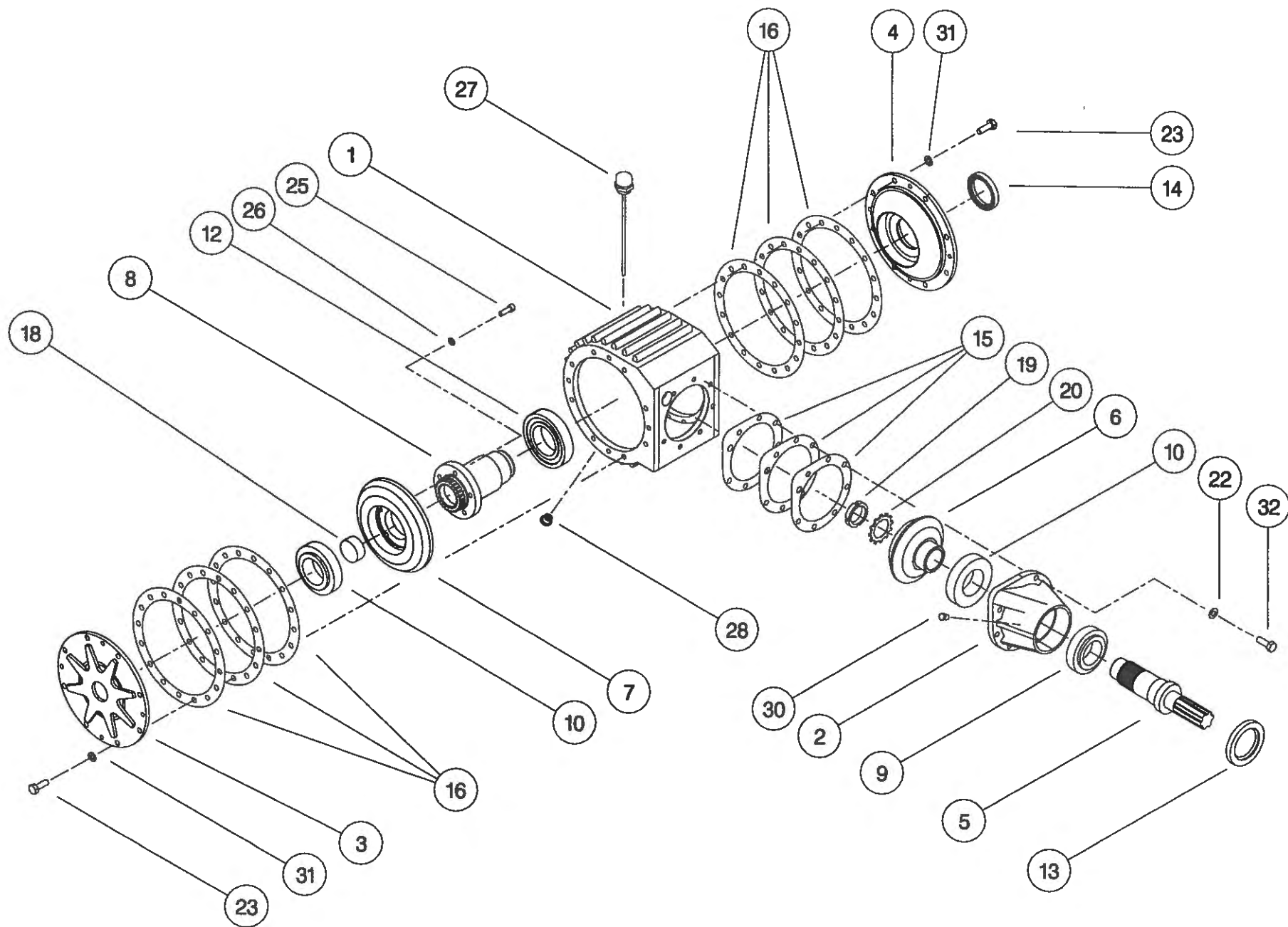
ASSY NUMBER: 196186 08				ASSY DESCRIPTION: FRAME & PARTS SUB (RX48RS)			
ITEM	PART NO	DESCRIPTION	QTY	ITEM	PART NO	DESCRIPTION	QTY
1	195372 01	RX48RS MAIN FRAME ASSY	1	38	HSS-0092	SETSCREW	1
2	193536 02	STRIPPER PLATE	2	39	WSH-0009	PLAIN WASHER	7
3	BLT-4710	COACH BOLT	20	40	NUT-0260	NYLOC NUT	7
4	NUT-0263	NUT	32	41	193480 01	SUPPORT BRACKET RH	1
5	WSH-0012	WASHER	32	42	192543 01	CROP DIVIDER ADJ.PLATE	2
6	191340 01	RUBBER SEAL	1	43	PIN-01790	LYNCH PIN & CHAIN	2
7	191339 01	CLAMP STRIP	2	44	193221 01	HEADER STAND BRACKET	1
8	POP-0006	POP RIVET	22	45	193222 01	HEADER FRONT STAND	2
9	193219 01	SKID	2	46	192550 01	NOSE ARM STOP PLATE	1
10	HSS-0316	SET SCREW	12	47			
11	WSH-0024	WASHER	6	48	193828 01	SKID ADJUSTER PLATE L.H	2
12	WSH-0070	WASHER	12	49	193828 02	SKID ADJUSTER PLATE R.H	2
13				50	190119 07	WASHER	4
14				51	193480 02	SUPPORT BRACKET LH	1
15	NUT-0269	NUT	4	52	193231 01	RUBBER SEAL	2
16	WSH-0018	WASHER	4	53	193229 01	SEAL CLAMP	2
17	191259 02	ADJ COWL SUPPORT ARM R.H	1	54	193230 01	SEAL CLAMP	2
18	191259 01	ADJ COWL SUPPORT ARM L.H	1	55	SCW-4960	BUTT.HD.SKT SCREW	12
19	BSH-3030	BUSH	2	56	WSH-0056	SPRING WASHER	12
20	BSH-3070	BUSH	4	57	193244 01	RETAINING NUT	2
21	NIP-0001	GREASE ZERK	2	58	193248 01	RETAINING SCREW	2
22	WSH-1547	WASHER	2	59	BLTA12380	BOLT	2
23	CIR-1150	CIRCLIP	2	60	193251 01	RETAINING BAR	2
24	193506 01	HYDRAULIC RAM	2	61	NUT-0170	PLAIN NUT	2
24a	RMSK00030	SEAL KIT		62	193363 01	ROTOR DEFLECTOR	2
25	HSS-0260	SET SCREW	2	63	HSS-0084	SETSCREW	6
26	PIN-1150	SPLIT PIN	2	64	193431 01	SKID WEAR PLATE	2
27	192193 01	ADJ COWL STOP L.H	1	65	193429 01	SKID WEAR CLAMP STRIP	2
28	192193 02	ADJ COWL STOP R.H	1	66	BLT-2700	COACH BOLT	16
29	HSS-0194	SET SCREW	7	67	SCW-1740	CSK.SOC.HEAD SCREW	8
30	WSH-0015	WASHER	17	68	195373 01	BELLY PAN WELD ASSY	2
31	NUT-0265	NUT	7	69			
32	192055 01	RUNNER ASSY L.H	1	70	HSS-0191	SETSCREW	12
33	192055 02	RUNNER ASSY R.H	1	71	WSH-0061	SPRING WASHER	12
34	SCW-1735	SCREW	6	72	194117 01	SKID WEAR CLAMP STRIP (REAR)	2
35	192304 01	AUGER END DEFLECTOR	2	73	190119 11	WASHER	6
36	HSS-0140	SET SCREW	6				
37	192494 01	INDICATOR ROD	1				





**Shelbourne Reynolds Engineering Limited**

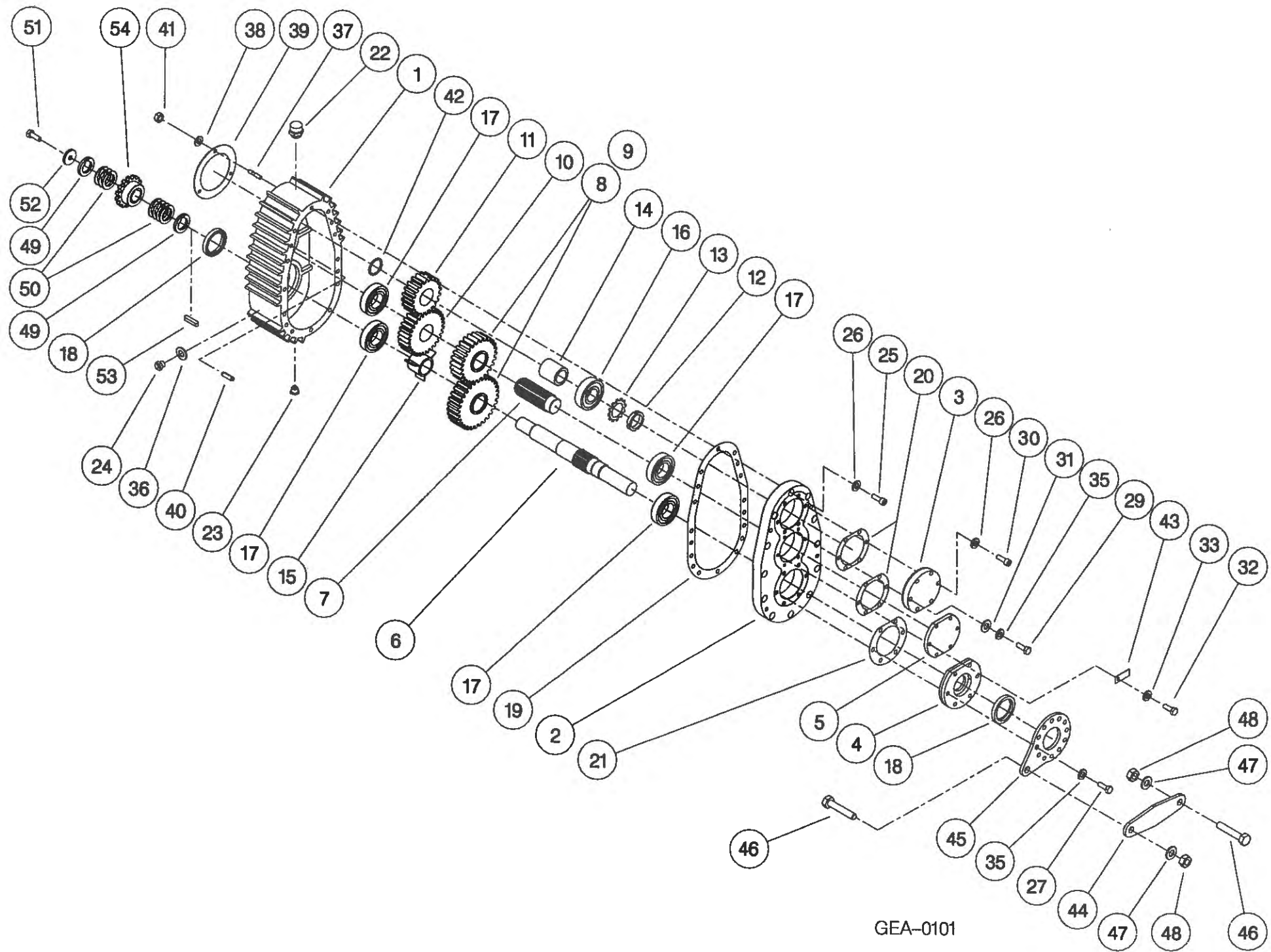
ASSY NUMBER: GEA-0095				ASSY DESCRIPTION: BEVEL GEARBOX (1.5:1)			
ITEM	PART NO	DESCRIPTION	QTY	ITEM	PART NO	DESCRIPTION	QTY
1	191715 01	GEARBOX CASING	1				
2	191716 01	INPUT HOUSING	1				
3	191717 01	OUTSIDE END COVER	1				
4	191718 01	INSIDE END COVER	1				
5	191719 01	INPUT SHAFT	1				
or	191819 01	INPUT SHAFT	1				
6	191720 01	BEVEL GEAR 20T	1				
or	191798 01	BEVEL GEAR 20T	1				
7	191721 01	BEVEL GEAR 30T	1				
or	191799 01	BEVEL GEAR 30T	1				
8	191722 01	OUTPUT SHAFT	1				
or	191800 01	OUTPUT SHAFT	1				
9	BRG-7000	BEARING	1				
10	BRG-7020	BEARING	2				
11							
12	BRG-7040	BEARING	1				
13	SEA-0590	ROTARY SHAFT SEAL	1				
14	SEA-0600	ROTARY SHAFT SEAL	1				
15	191812	SHIM PACK	1				
16	191813	SHIM PACK	2				
17							
18	191735 01	SHAFT PLUG	1				
19	NUT-3010	LOCK RING	1				
20	WSH-6010	LOCK WASHER	1				
21							
22	WSH-1096	SHAKEPROOF WASHER	7				
23	HSS-1054	SET SCREW	23				
24							
25	SCW-0139	CAP HEAD SCREW	5				
26	WSH-0058	SPRING WASHER	5				
27	FIT-0254	BREATHER/DIP STICK	1				
28	FIT-0253	MAGNETIC DRAIN PLUG	1				
29							
30	FIT-0223	TAPER PLUG	1				
31	WSH-1145	SPRING WASHER	16				



GEA-0095

**Shelbourne Reynolds Engineering Limited**

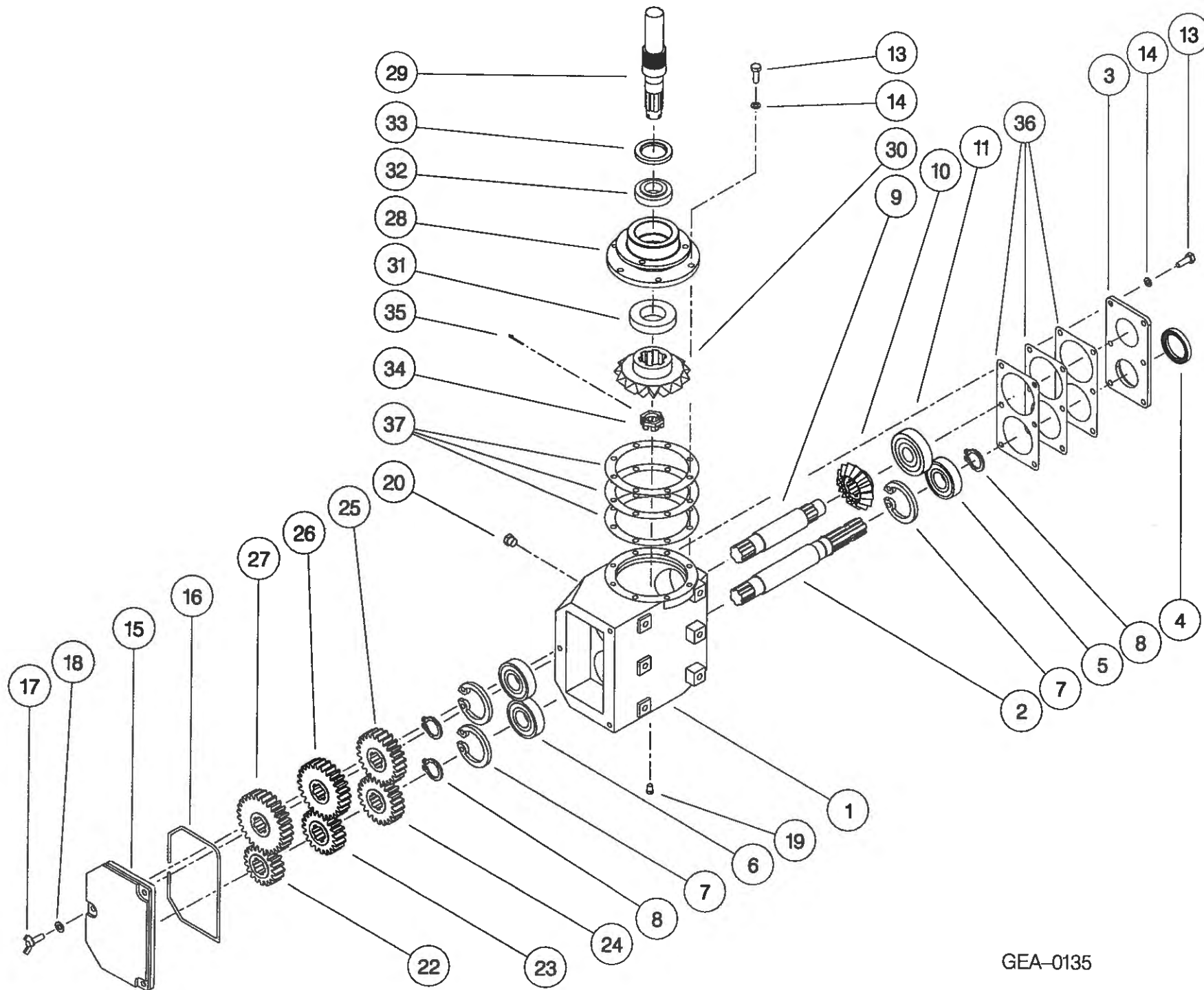
ASSY NUMBER: GEA-0101				ASSY DESCRIPTION: SHORT DROPBOX FOR RX & CX (1996)			
ITEM	PART NO	DESCRIPTION	QTY	ITEM	PART NO	DESCRIPTION	QTY
1	191723 01	GEARCASE	1	38	WSH-0012	PLAIN WASHER	5
2	191723 02	LID	1	39	191759 01	SEAL	1
3	191696 01	OUTPUT END CAP	1	40	191765 01	DOWL	2
4	191694 01	INPUT FLANGE	1	41	NUT-0012	PHILIDAS NUT	5
5	191693 01	END CAP	1	42	CIR-4000	SNAP RING CIRCLIP	1
6	191807 01	INPUT/AUGER OUTPUT SHAFT	1	43	191928 01	IDENTIFICATION TAG	1
7	191801 01	INTERMED. SHAFT	1	44	193097 01	FIXED LINK	1
8		CHANGE GEAR		45	191687 01	LINK BRACKET	1
9		CHANGE GEAR		46	HSS-0316	SET SCREW	2
10	191803 01	SPUR GEAR 30T	1	47	WSH-0024	WASHER	2
11	191884 01	SPUR GEAR 20T	1	48	NUT-0271	NUT	2
12	NUT-3000	LOCK RING	1	49	191692 01	SPACER	2
13	WSH-6000	LOCK WASHER	1	50	191692 02	SHIM	7
14	191725 01	SPACER	1	51	HSSF10174	SET SCREW	1
15	191894 01	SPACER	1	52	190548 01	PLAIN WASHER	1
16	BRG-6600	BEARING	1	53	K1008045	KEY	1
17	BRG-5800	BEARING	4	54		AUGER SPROCKET	
18	SEA-0610	ROTARY SHAFT SEAL	2				
19	191756 01	GASKET	1				
20	191757	SEAL PACK	2				
21	191758	SEAL PACK	1				
22	FIT-0255	BREATHER	1				
23	FIT-0253	MAGNETIC DRAIN PLUG1					
24	FITD00005	SIGHT GLASS/SEAL	1				
25	SCW-0196	CAP HEAD SCREW	12				
26	WSH-1301	SHAKEPROOF WASHER	15				
27	HSS-0202	SETSCREW	6				
28							
29	BLTA10290	BOLT	3				
30	SCW-0190	CAP HEAD SCREW	3				
31	WSH-0015	PLAIN WASHER	3				
32	HSS-0145	SET SCREW	6				
33	WSH-1300	SHAKEPROOF WASHER	6				
34							
35	WSH-0061	SPRING WASHER	9				
36							
37	191737 01	STUD	5				



GEA-0101

**Shelbourne Reynolds Engineering Limited**

ASSY NUMBER:		ASSY DESCRIPTION: 5 SPEED G.BOX ASSY ALUM/FINNED 1997 (WITH DROP BOX)					
ITEM	PART NO	DESCRIPTION	QTY	ITEM	PART NO	DESCRIPTION	QTY
1	191821 01	GEARBOX CASING	1				
2	191829 01	INPUT SHAFT	1				
3	191825 01	SEAL HOUSING	1				
4	SEA-0550	ROTARY SHAFT SEAL	1				
5	BRG-6600	BEARING	1				
6	BRG-6601	BEARING	2				
7	CIR-3800	CIRCLIP	3				
8	CIR-2700	CIRCLIP	3				
9	191828 01	LAYSHAFT	1				
10	191823 01	BEVEL GEAR	1				
11	BRG-6800	BEARING	1				
12							
13	HSS-0194	SET SCREW	14				
14	WSH-0061	SPRING WASHER	14				
15	192924 01	REMOVABLE COVER	1				
16	ORA260000	`O' RING SEAL STRIP	0.7				
17	SCW-4760	WING SCREW	3				
18	WSH-1301	SHAKEPROOF WASHER	3				
19	FIT-0223	PLUG	1				
20	FIT-0218	BREATHER	1				
21							
22	191822 18	CHANGE GEAR	1				
23	191822 20	CHANGE GEAR	1				
24	191822 22	CHANGE GEAR	1				
25	191822 24	CHANGE GEAR	1				
26	191822 26	CHANGE GEAR	1				
27	191822 28	CHANGE GEAR	1				
28	191691 01	OUTPUT HOUSING	1				
29	191885 01	OUTPUT SHAFT	1				
30	191824 01	BEVEL GEAR	1				
31	BRG-6000	BEARING	1				
32	BRG-5700	BEARING	1				
33	SEA-0565	ROTARY SHAFT SEAL	1				
34	191843 01	SLOTTED NUT	1				
35	PIN-1168	SPLIT PIN	1				
36	191830	GASKET SET	1				
37	191831	GASKET SET	1				

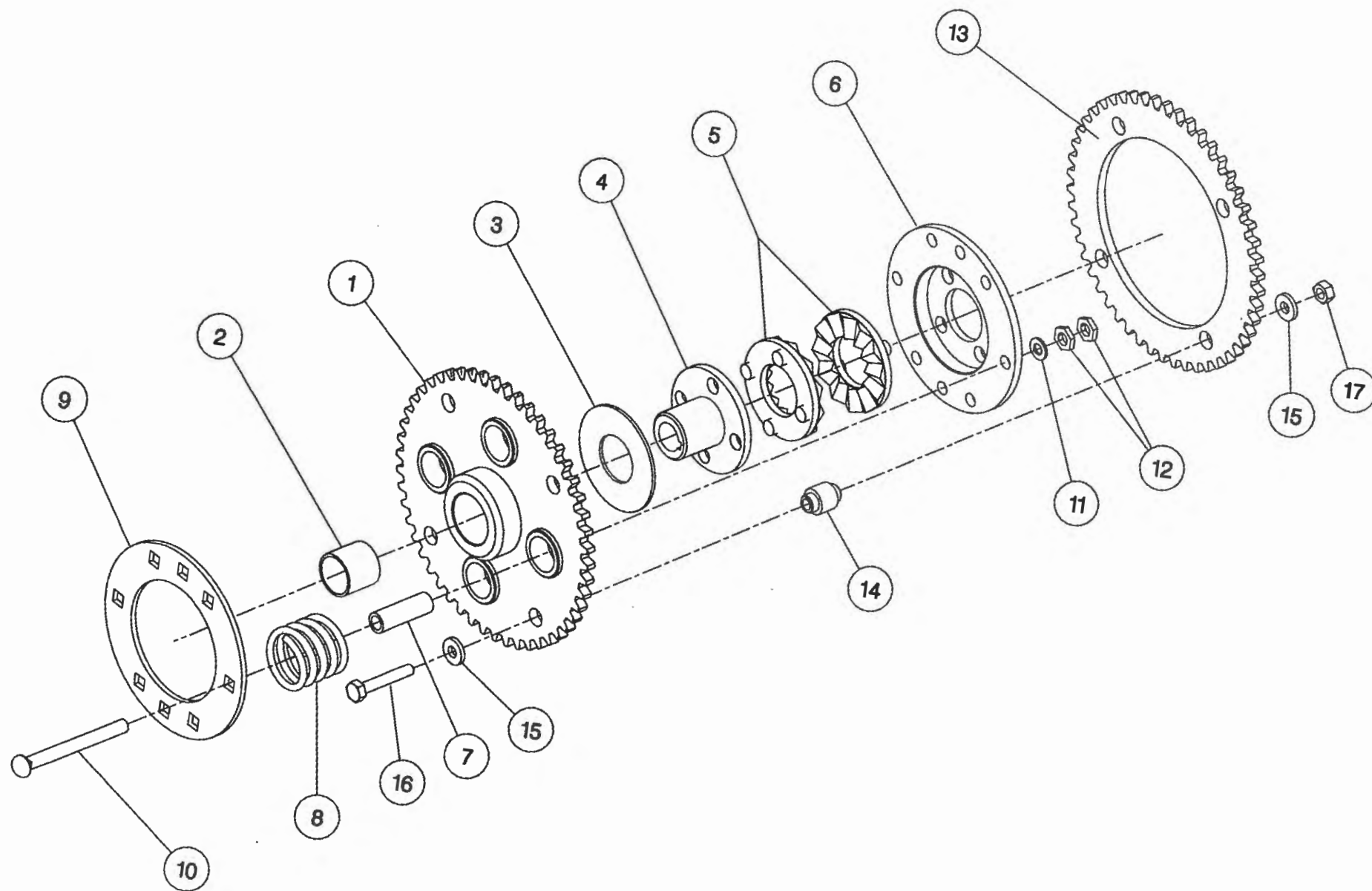


GEA-0135

**Shelbourne Reynolds Engineering Limited**

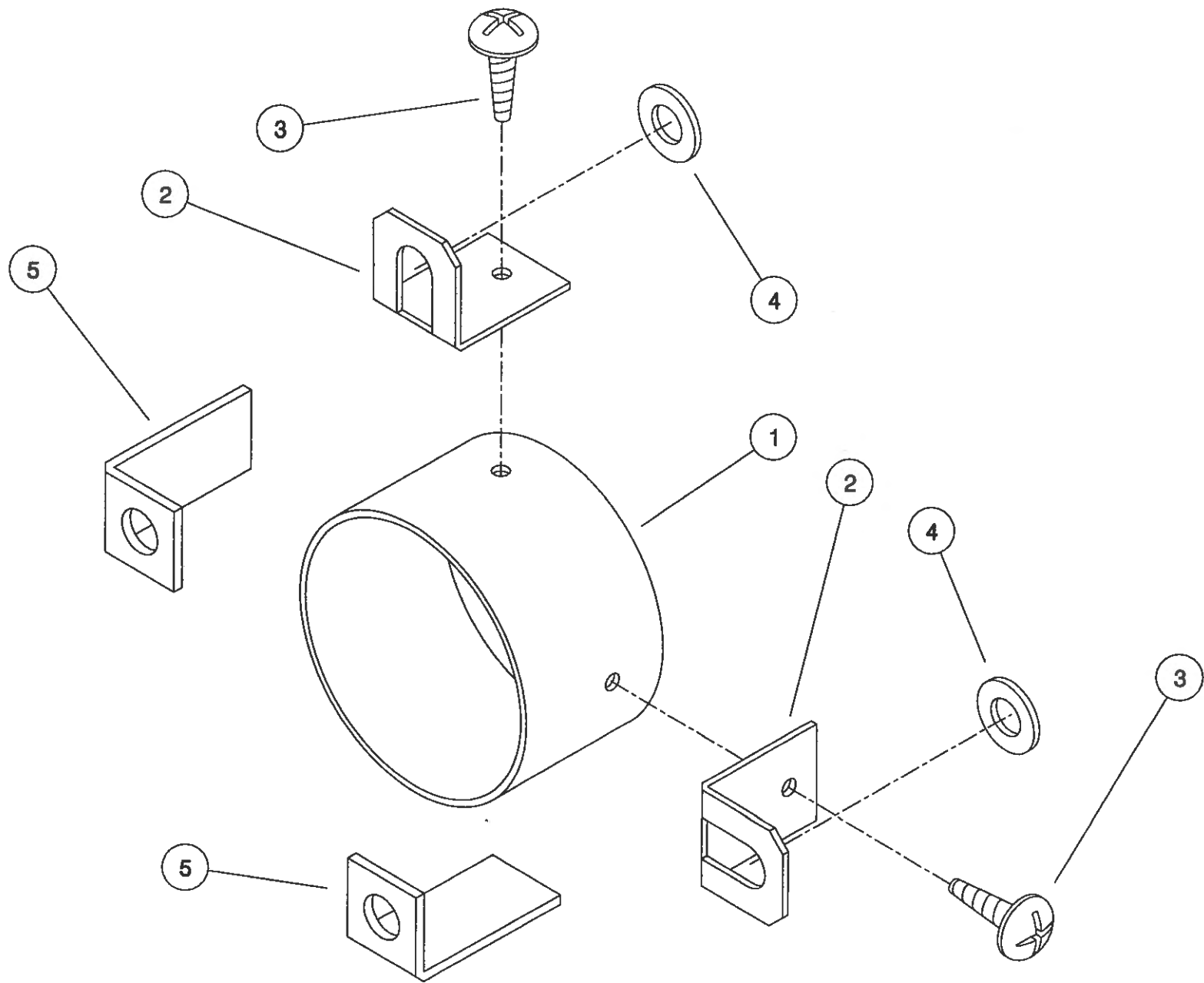
ASSY NUMBER: KIT-00116				ASSY DESCRIPTION: AUGER DRIVE SPROCKET/CLUTCH ASSY			
ITEM	PART NO	DESCRIPTION	QTY	ITEM	PART NO	DESCRIPTION	QTY
1	192018 01	SPROCKET ASSY 50T	1				
2	BSH-3019	BUSH	1				
3	192008 01	THRUST WASHER	1				
4	192013 01	CLUTCH HUB	1				
5	131005	CLUTCH PLATE	2				
6	192014 01	DRIVE DISC	1				
7	131073 02	SPACER	4				
8	131063	SPRING	4				
9	192009 01	FIXING RING	1				
10	BLTF12570	COACH BOLT	4				
11	WSH-0018	PLAIN WASHER	4				
12	NUT-0170	PLAIN NUT	8				
13	192254 01	SPROCKET 50T	1				
14	192253 02	SPACER	4				
15	190119 11	WASHER	8				
16	BLTA10440	BOLT	4				
17	NUT-0265	NYLOC NUT	4				





## 41

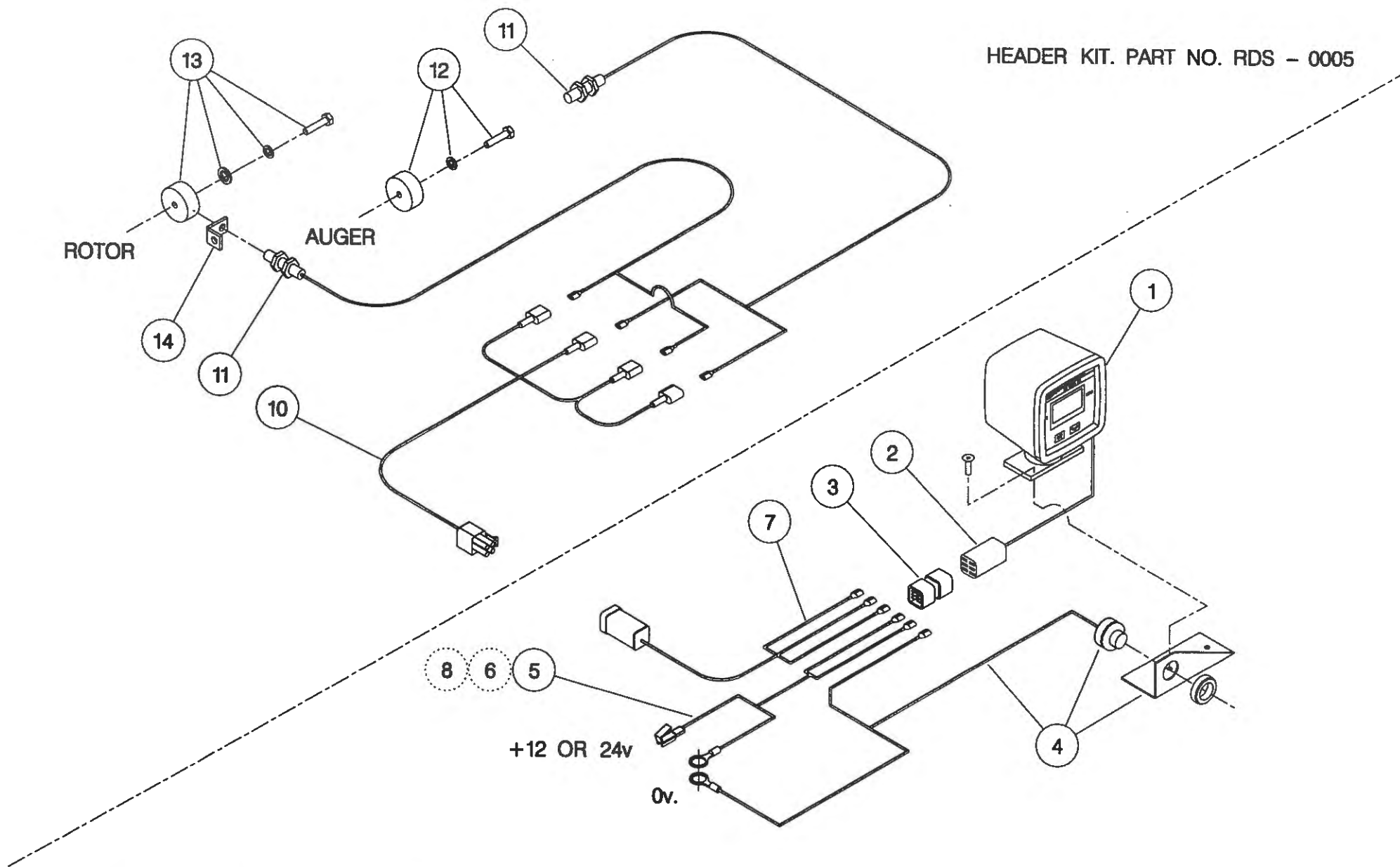
ITEM		PART NO	DESCRIPTION	QTY	ASSY DESCRIPTION: PTO END GUARD		
1		192985 06	GUARD TUBE	1			
2		192992 01	GUARD SECURING BRACKET	2			
3		SCW-5104	SCREW	2			
4		WSH-0015	WASHER	2			
5		191763 01	PTO BRACKET	2			



KIT-00525

**Shelbourne Reynolds Engineering Limited**

ASSY NUMBER: RDS-0001/RDS-0005				ASSY DESCRIPTION: TACHO KIT			
ITEM	PART NO	DESCRIPTION	QTY	ITEM	PART NO	DESCRIPTION	QTY
1	RDS-0010	TACHO HEAD COMPLETE	1	13	RDS-0020	MAGNET CARRIER,	1
2	RDS-0011	TACHO HEAD PLUG & ARMS	1			SET SCREW,	1
3	RDS-0012	HARTING CONNECTOR & STICKER	1 1			PENNY WASHER & SPRING WASHER	1 1
4	RDS-0013	AUDIBLE ALARM, FIXING BRACKET & SELF TAP.SCREWS	1 1 2	14	RDS-0021	ROTOR SENSOR BRACKET	1
5	RDS-0014	POWER CONNECTION LEAD	1				
6	FUS-0022	FUSE	1				
7	RDS-0015	COMBINE LEAD	1				
8	RDS-0016	24V-12V CONVERTER KIT (NOT INCLUDED IN RDS-0001)	1				
9							
10	RDS-0017	HEADER LEAD	1				
11	RDS-0018	SHAFT SENSOR	2				
12	RDS-0019	MAGNET, TAPTITE BOLT & FIBRE WASHER	1 1 1				



HEADER KIT. PART NO. RDS - 0005

COMBINE KIT. PART NO. RDS - 0001

NOTE ;

ITEM 6 IS USED IF POWER SUPPLY IS NOT FUSED.

ITEM 8 IS USED IF POWER SUPPLY IS 24V, -VE EARTH. (NOT INCLUDED IN RDS - 0001).

ITEM 4 (ALARM ) IS BUILT INTO ITEM 1 (TACHO HEAD ) ON LATER MODELS.

# **NUMERIC PARTS LIST**

<u>PART No.</u>	<u>PAGE</u>	<u>PART No.</u>	<u>PAGE</u>	<u>PART No.</u>	<u>PAGE</u>
127075 12	23	191777 01	7	192258 01	7
127075 16	23		19	192263 01	7
131005	39	191798 01	33	192265 01	7
131014 01	7	191799 01	33	192266 01	13
	19	191800 01	33	192273 01	13
131063	39	191801 01	35	192274 01	13
131073 02	39	191803 01	35	192287 01	13
190060 06	7	191807 01	35	192304 01	31
	19	191812	33	192307 01	25
190119 04	19	191813	33	192311 01	25
190119 05	5	191819 01	33	192344 01	7
190119 07	31	191821 01	37	192354 01	13
190119 11	31	191822 18	37	192355 01	13
	39	191822 20	37	192494 01	31
190361 01	5	191822 22	37	192524 11	5
190548 01	35	191822 24	37	192533 01	9
190702 04	23	191822 26	37	192533 02	9
191040 01	7	191822 28	37	192537 01	9
	19	191823 01	37	192537 02	9
191259 01	31	191824 01	37	192543 01	31
191259 02	31	191825 01	37	192550 01	31
191339 01	31	191828 01	37	192555 01	23
191340 01	31	191829 01	37	192570 01	23
191355 01	23	191830	37	192636 01	11
191359 01	23	191831	37	192636 06	11
191642 01	5	191843 01	37	192679 01	29
191652 01	19	191862 01	9	192718 01	5
191680 01	19	191884 01	35		15
191687 01	35	191885 01	37	192731 01	13
191691 02	37	191894 01	35	192751 01	13
191692 01	35	191928 01	35	192812 01	15
191692 02	35	191940 01	23	192813 01	15
191696 02	35	191981 01	5	192876 01	27
191715 01	33	191982 01	23	192876 02	27
191716 01	33	191983 01	23	192892 01	29
191717 01	33	192008 01	39	192892 02	29
191718 01	33	192009 01	39	192892 03	29
191723 01	35	192011 01	25	192897 01	29
191723 02	35	192013 01	39	192899 01	29
191725 01	35	192014 01	39	192924 01	37
191735 01	33	192018 01	39	192953 01	23
191737 01	35	192038 01	5	192959 01	29
191756 01	35	192055 01	31	192969 01	13
191757	35	192055 02	31	192970 01	13
191759 01	35	192091 01	19	192970 02	13
191763 01	41	192193 01	31	192985 06	41
191765 01	35	192193 02	31	192992 01	41
191770 01	9	192223 06	25	193097 01	35
191774 01	7	192253 02	39	193118 01	29
	19	192254 01	39	193118 02	29

# **NUMERIC PARTS LIST**

<b>PART No.</b>	<b>PAGE</b>	<b>PART No.</b>	<b>PAGE</b>	<b>PART No.</b>	<b>PAGE</b>
193203 01	25	195140 01	5	BSH-3030	15
193219 01	31	195154 01	5		31
193220 01	27	195371 01	25	BSH-3070	31
193221 01	31	195372 01	31	BSHZ02553	7
193222 01	31	195373 01	31	CHN-0145	23
193229 01	31	200035 03	11	CHN-01682	7
193230 01	31	200038 01	11	CIR-0470	7
193231 01	31	200120 02	11		19
193244 01	31	AUG-02500	25	CIR-1125	7
193248 01	31	BLT-2316	7	CIR-1150	31
193251 01	31	BLT-2700	31	CIR-2700	37
193293 01	13	BLT-3745	11	CIR-3800	37
193295 01	27	BLT-3790	11	CIR-4000	35
193297 01	23	BLT-4710	31	CLP-01012	21
193311 01	13	BLTA06320	13	EDS-11400	23
193313 01	13	BLTA06470	13	EDS-11600	15
193338 01	23	BLTA07320	23	FIT-0213	21
193346 01	23	BLTA08470	23	FIT-0218	37
193348 01	17	BLTA08500	13	FIT-0223	33
193348 02	17	BLTA08530	13		37
193363 01	31	BLTA10290	15	FIT-0253	33
193382 01	29		35		35
193392 01	23	BLTA10350	13	FIT-0254	33
193393 01	23	BLTA10440	39	FIT-0255	35
193395 01	23	BLTA10520	27	FITD00005	35
193429 01	31	BLTA10530	13	GEA-0095	19
193431 01	31	BLTA12290	19	GEA-0102	19
193478 01	23	BLTA12380	31	GEA-0135	19
193480 01	31	BLTF12570	39	GSTA14407	15
193480 02	31	BRG-0218	25	HHBC22610	21
193504 01	27	BRG-0240	11	HHBC47610	21
193506 01	31	BRG-1994	7	HPPD07100	21
193518 02	5	BRG-1995	7	HSS-0084	13
193519 16	15		13		13
193526 01	29		19		23
193526 07	29	BRG-22500	7		31
193527 01	29	BRG-3275	27	HSS-0086	7
193527 07	29	BRG-5700	37		21
193528 01	29	BRG-5800	35	HSS-0092	31
193536 02	31	BRG-6000	37	HSS-0140	5
193828 01	31	BRG-6600	35		23
193828 02	31		37		25
193838 02	5	BRG-6601	37		31
	23	BRG-6800	37	HSS-0145	23
194103 01	23	BRG-7000	33	HSS-0155	9
194117 01	31	BRG-7020	33	HSS-0188	35
194363 01	25	BRG-7040	33	HSS-0191	9
194363 02	25	BRG-7080	25		13
194364 01	23	BSH-1530	13		31
195104 01	23		19		33

# **NUMERIC PARTS LIST**

<u>PART No.</u>	<u>PAGE</u>	<u>PART No.</u>	<u>PAGE</u>	<u>PART No.</u>	<u>PAGE</u>
HSS-0194	19	NUT-0265	9	SEA-0565	37
	31		27	SEA-0590	33
	37		39	SEA-0600	33
HSS-0202	35	NUT-0269	7	SEA-0610	35
HSS-0238	19		11	SPGA32221	13
	27		13	TEXT	35
HSS-0241	11		19		35
HSS-0260	31		31		35
HSS-0265	13	NUT-0271	7	TNF-0010	23
HSS-0315	13		19	TNF-0011	23
HSS-0316	31		35	TNF-0012	23
	35	NUT-0580	11	WDA-00025	23
HSS-0318	7	NUT-3000	35	WSH-0009	7
HSS-0330	19	NUT-3010	33		13
HSSA10680	13	ORA260000	37		21
HSSF08174	29	PIN-01790	31		23
HSSF10174	35	PIN-1150	11		25
HSSF12204	25		31		31
HSSG10204	29	PIN-1168	37	WSH-0012	13
HSSG12174	19	POP-0006	5		23
K0807035	7		23		25
K0807050	11		31		31
K0807060	11	PSP-01201	13		35
K1008045	35	PSP-01800	13	WSH-0015	9
KIT-00116	11	PTO-09011	19		11
KIT-00525	19	RCL-0015	23		13
LTC-00040	23	RCXPACK1	3		15
NIP-0001	15	RX48FB2	3		19
	31	RX48FB3	3		25
NUT-0012	35	RX48RSFB1	3		27
NUT-0162	23	RX48RSFB4	3		31
NUT-0170	11	SCBA08172	25		35
	31	SCCA10412	25		41
	39	SCW-0139	33	WSH-0018	7
NUT-0260	7	SCW-0190	33		11
	13		35		13
	21	SCW-0196	35		19
	23	SCW-0515	27		31
	25	SCW-1735	31		39
	31	SCW-1740	31	WSH-0024	7
NUT-0263	13	SCW-4535	11		13
	23	SCW-4700	23		19
	25	SCW-4760	37		31
	31	SCW-4959	25		35
NUT-0265	11	SCW-4960	25	WSH-0030	11
	13		31	WSH-0056	13
	15	SCW-5104	41		23
	19	SCW-5180	21		25
	25		29		31
	31	SEA-0550	37	WSH-0058	33



# NUMERIC PARTS LIST

<u>PART No.</u>	<u>PAGE</u>	<u>PART No.</u>	<u>PAGE</u>	<u>PART No.</u>	<u>PAGE</u>
WSH-0058	..... 5				
	..... 9				
	..... 23				
	..... 25				
WSH-0061	..... 13				
	..... 15				
	..... 31				
	..... 33				
	..... 35				
	..... 37				
WSH-0065	..... 19				
	..... 27				
WSH-0070	..... 7				
	..... 13				
	..... 31				
WSH-1034	..... 29				
WSH-1038	..... 23				
WSH-1301	..... 33				
	..... 35				
	..... 37				
WSH-1547	..... 31				
WSH-6000	..... 35				
WSH-6010	..... 33				