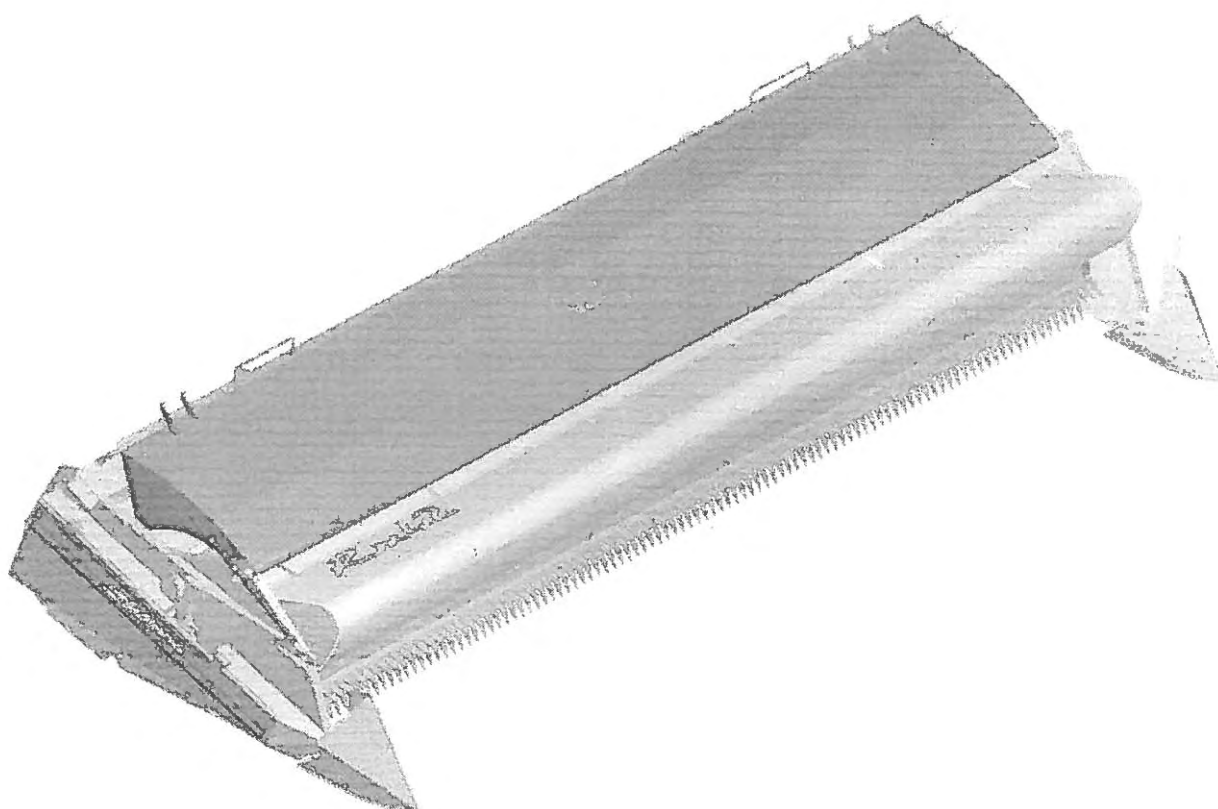


# *RX48 Shelbourne Header* (1998)

## PARTS MANUAL



**Shelbourne Reynolds Engineering Ltd**

**Stanton**

**Bury St Edmunds**

**Suffolk IP31 2AR**

**England**

**Telephone: 01359 250415**

**(Stores direct 01359 251231)**

**Fax. No: 01359 250464**

**(Stores direct 01359 252031)**



## **SHELBOURNE HEADER PARTS MANUAL**

Your *Shelbourne* Header is designed to fit many different types of combine.

For this reason the machine number index is broken down into sections for identification. Your serial and machine numbers are listed below:

SHELBOURNE HEADER SERIAL NUMBER \_\_\_\_\_

SHELBOURNE HEADER MACHINE NUMBER \_\_\_\_\_

ADAPTOR PLATE ASSEMBLY \_\_\_\_\_

DRIVE KIT \_\_\_\_\_

HYDRAULIC FITTING KIT \_\_\_\_\_

OTHER KIT OPTIONS \_\_\_\_\_

\_\_\_\_\_

\_\_\_\_\_

This manual contains all parts common to the *Shelbourne* Header and is used in conjunction with the combine fittings manual, which contains the adaptor plate, and drive kit parts and fitting, and any other options available.

### **MACHINE IDENTIFICATION**

The *Shelbourne* Header machine identification number is engraved on a plate on the top right hand corner of the header.

The adaptor plate has a plate on the top right hand corner also with the adaptor plate assembly number engraved on it.

The drive kit can be identified by description, and use of the drive kit identification number marked above.

## ORDERING SPARE PARTS

To ensure that you order the correct part from your SRE dealer please use the following procedure.

### ALWAYS QUOTE THE MACHINE AND SERIAL NUMBERS WHEN ORDERING.

Refer to the front of this parts list book (machine assemblies), decide if the part you want is on:

*Shelbourne* Head  
Adaptor Kit  
Drive Kit

If your part is on the Adaptor Kit, identify by matching the part number from the adaptor plate with that in the top left hand corner of the parts lists. You will find the appropriate drawing accompanying the parts list.

If the part you require is on the drive kit, ensure that you have the parts listing for the correct combine model and width. Then progress through to the next drawing following that list, for indication of that part.

If the part you require is on the *Shelbourne* Head assembly, identify the appropriate assembly by matching the part number from the *Shelbourne* Head with the page with the same number marked on the top left hand side.

Use the following sub assembly numbers and descriptions to find the area of the machine that your part is required, i.e. you need a part which is fitted to the auger, your part will be in the auger assembly parts list.

Having decided which sub-assembly your part should be under, use the number beside that sub-assembly description which will begin with 1960-- -- to find the parts listing of the sub-assembly further on in the manual. The number will be printed in the top left hand corner, the sub-assemblies are in numerical order.

Having found the correct parts list, you will find the corresponding drawing by processing through the manual to the next drawing.

The drawings indicate the components by item numbers which you will find are repeated in the left hand side of your parts listing, and therefore referring to the correct part.

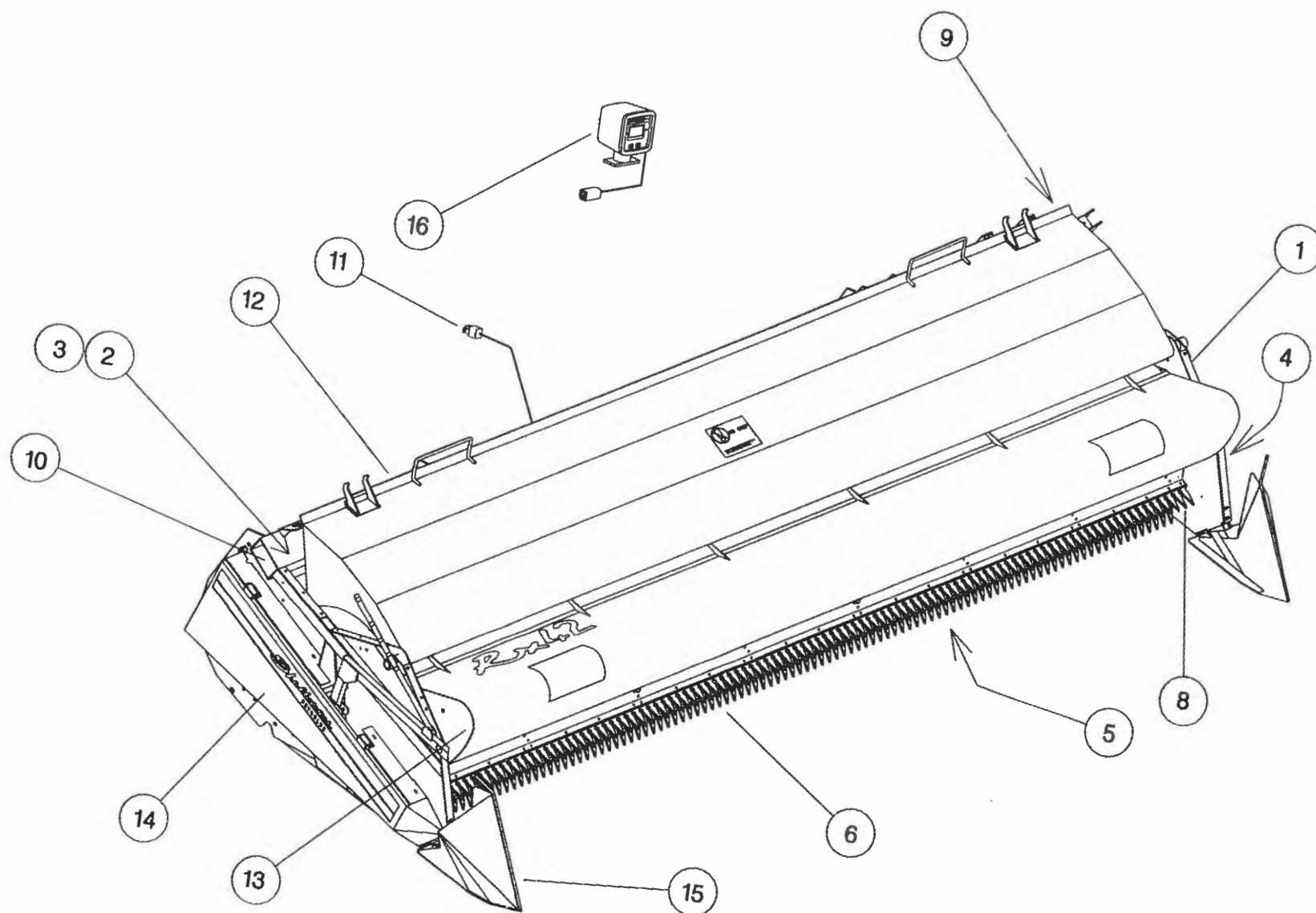
If the item within the sub-assembly is a further collection of parts (i.e. a KIT within a sub assembly) then the parts listing for this will be found just after the 1960-- -- sub-assemblies. These smaller assemblies will be in alphabetical and numerical order.



**Shelbourne Reynolds Engineering Limited**

ASSY NUMBER: 196544 08 ASSY DESCRIPTION: RX48 SHAKERPAN SHELBOURNE HEADER (1998)

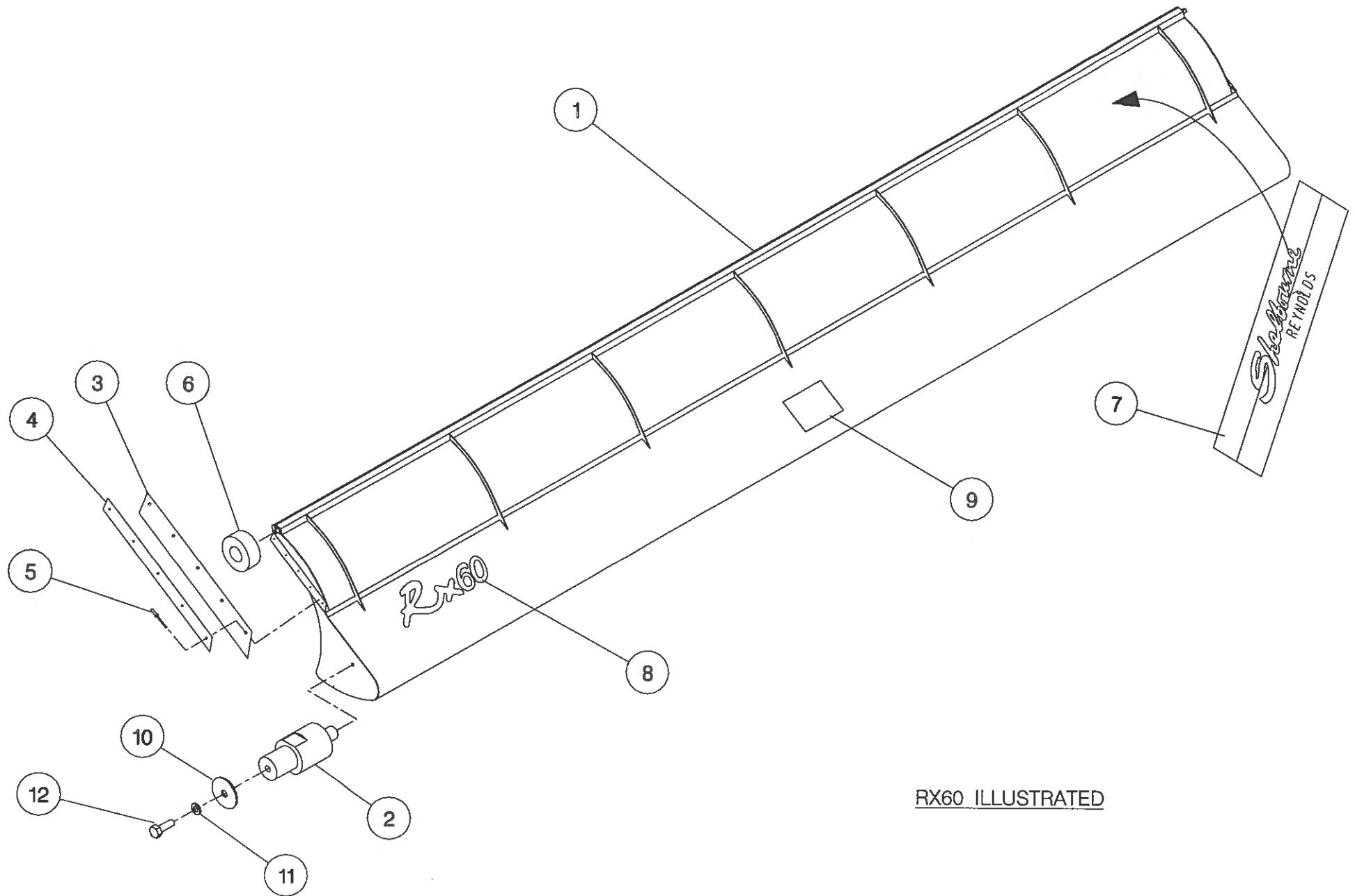
ITEM	PART NO	DESCRIPTION	QTY	ITEM	PART NO	DESCRIPTION	QTY
1	196150 08	FRAME & PARTS	1				
2	196148 08	AUGER ASSY	1				
3	196102 05	AUGER MTG SUB	1				
4	196067 02	DRIVE COMPONENTS	1				
5	196126 08	SHAKERPAN SUB	1				
6	196151 08	STRIPPING ROTOR ASSY	1				
7							
8	196149 01	ROTOR MTG SUB	1				
9	196134 01	ROTOR/AUGER DRIVE SUB	1				
10	196140 08	HYDRAULICS	1				
11	RDS-0005	HEADER MONITORING KIT	1				
12	196127 08	HOOD SUB ASSY	1				
13	196053 08	ADJ CROP DEFLECTOR SUB	1				
14	196145 03	EMBLEMS & GUARDS	1				
15	196078 01	TORPEDO DIVIDER SUB	1				
OR	196132 01	SHORT DIVIDER SUB	1				
16	RDS-0001	COMBINE MONITOR KIT	1				



**Shelbourne Reynolds Engineering Limited**

ASSY NUMBER: 196053 08				ASSY DESCRIPTION: ADJ.CROP DEFLECTOR SUB ASSY (RX48)			
ITEM	PART NO	DESCRIPTION	QTY	ITEM	PART NO	DESCRIPTION	QTY
1	193518 01	ADJ.CROP DEFLECTOR (4.8M)	1				
2	190361 01	PIVOT BUSH	2				
3	192037 01	RUBBER SEAL	2				
4	192038 01	CLAMP STRIP	2				
5	POP-0006	POP RIVET	10				
6	191642 01	ROLLER	2				
7	191981 01	EMBLEM (SHEL.REYNOLDS)	1				
8	192524 11	EMBLEM (RX48)	1				
9	192718 01	TRANSFER (NO STEP)	1				
10	190119 05	PLAIN WASHER	2				
11	WSH-0058	WASHER	2				
12	HSS-0140	SETSCREW	2				

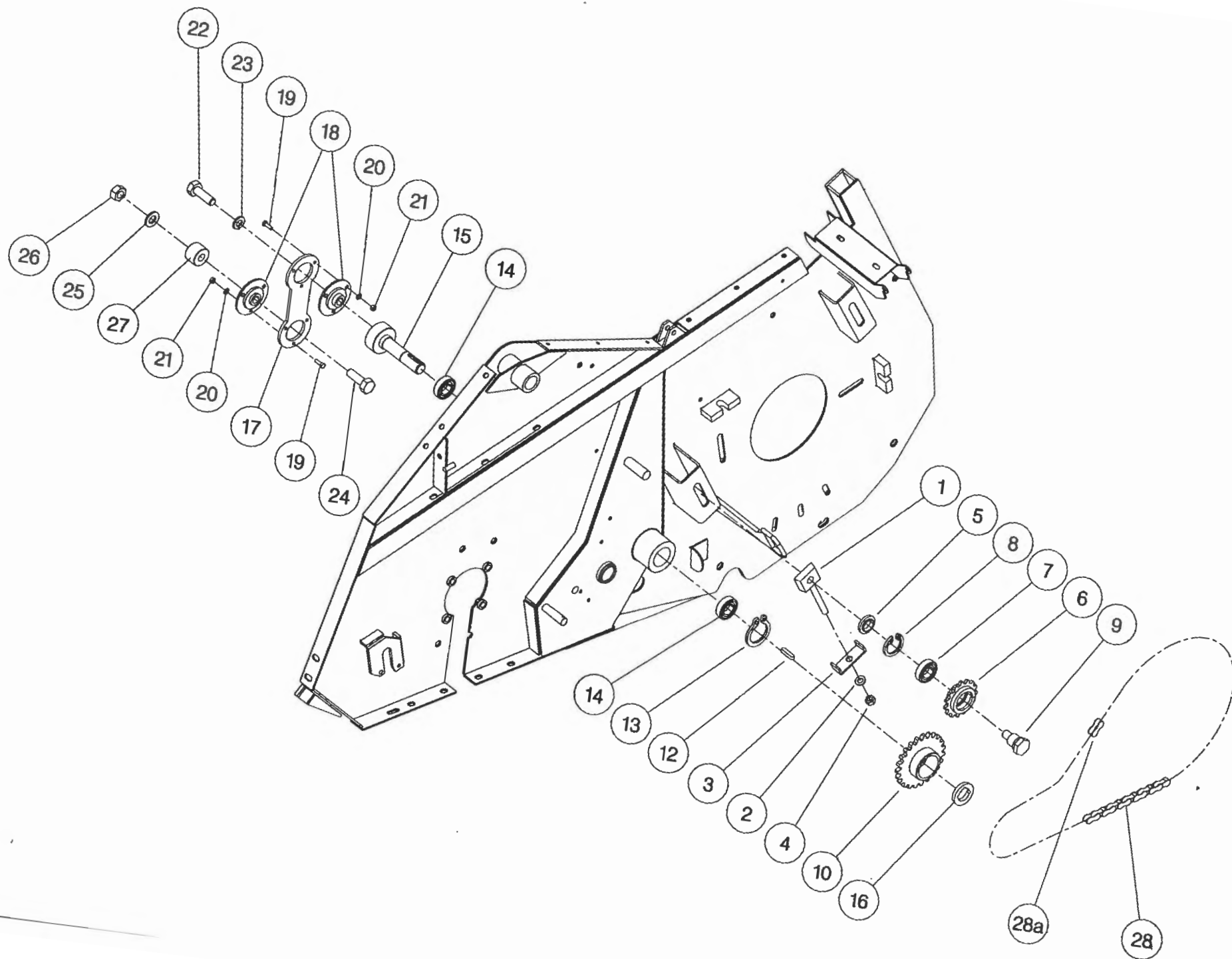




RX60 ILLUSTRATED

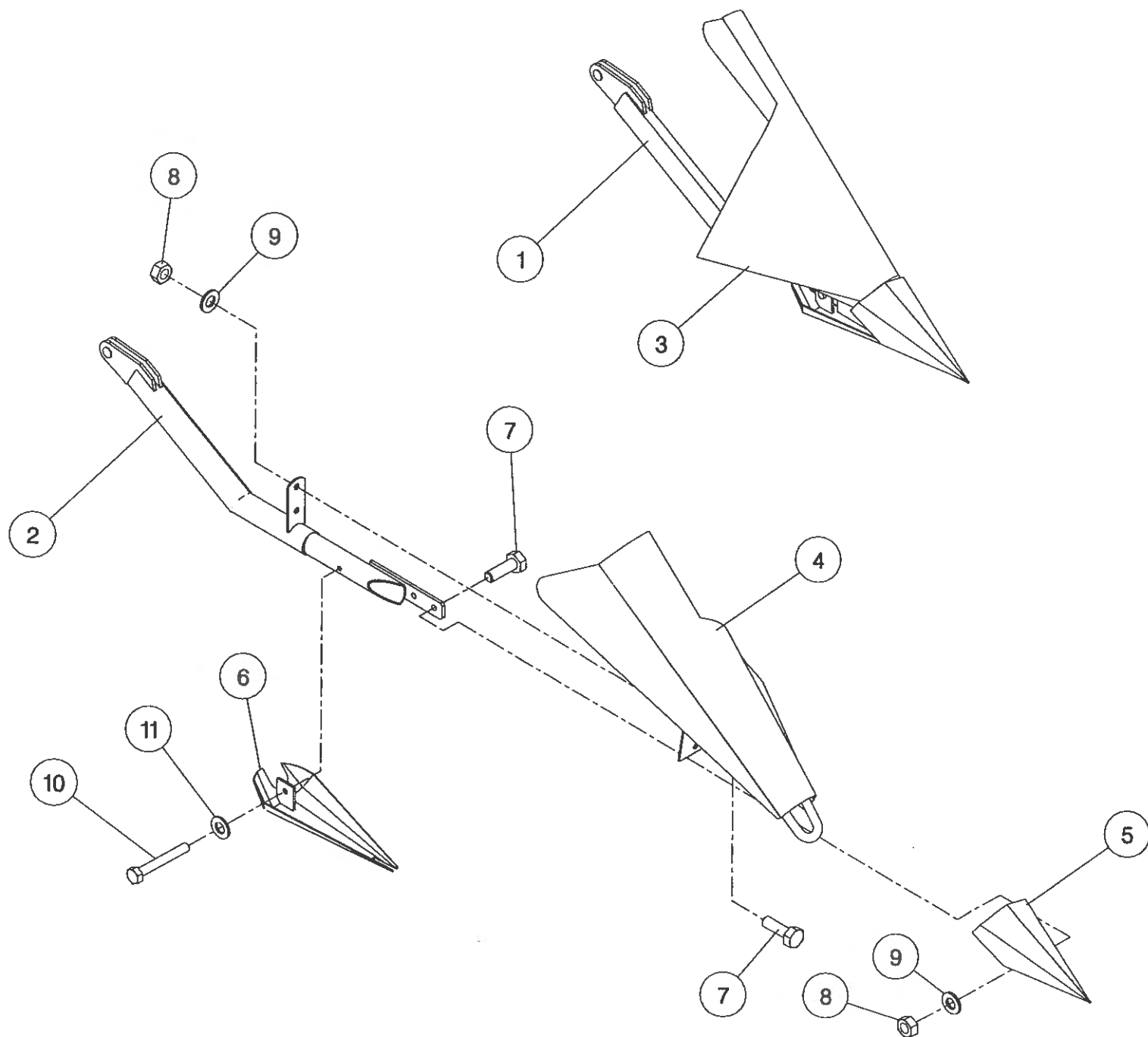
**Shelbourne Reynolds Engineering Limited**

ASSY NUMBER:		196067 02		ASSY DESCRIPTION:		DRIVE PARTS SHAKERPAN STD	
ITEM	PART NO	DESCRIPTION	QTY	ITEM	PART NO	DESCRIPTION	QTY
1	191777 01	IDLER ADJ SCREW	1				
2	WSH-0018	WASHER	1				
3	191774 01	PLATE	1				
4	NUT-0269	NUT	1				
5	191040 01	SPACER	1				
6	131014 01	SPROCKET IDLER	1				
7	BRG-1995	BEARING	1				
8	CIR-0470	CIRCLIP	1				
9	190060 06	IDLER SPINDLE	1				
10	192258 01	PAN DRIVE SPROCKET 25T	1				
11							
12	K0807035	KEY	1				
13	CIR-1125	CIRCLIP	1				
14	BRG-1994	BEARING	2				
15	192263 01	PAN DRIVE SHAFT	1				
16	BSHZ02553	LOCKING BUSH	1				
17	192265 01	PITMAN	1				
18	BRG-22500	BEARING	2				
19	HSS-0086	SETSCREW	6				
20	WSH-0009	FLAT WASHER	6				
21	NUT-0260	NUT	6				
22	HSS-0318	SETSCREW	1				
23	WSH-0070	SPRING WASHER	1				
24	BLT-2316	BOLT	1				
25	WSH-0024	FLAT WASHER	1				
26	NUT-0271	NUT	1				
27	192344 01	SPACER	1				
28	CHN-01682	CHAIN + JOINER	1				
28a	CHN-01600	CHAIN JOINER LINK	1				



**Shelbourne Reynolds Engineering Limited**

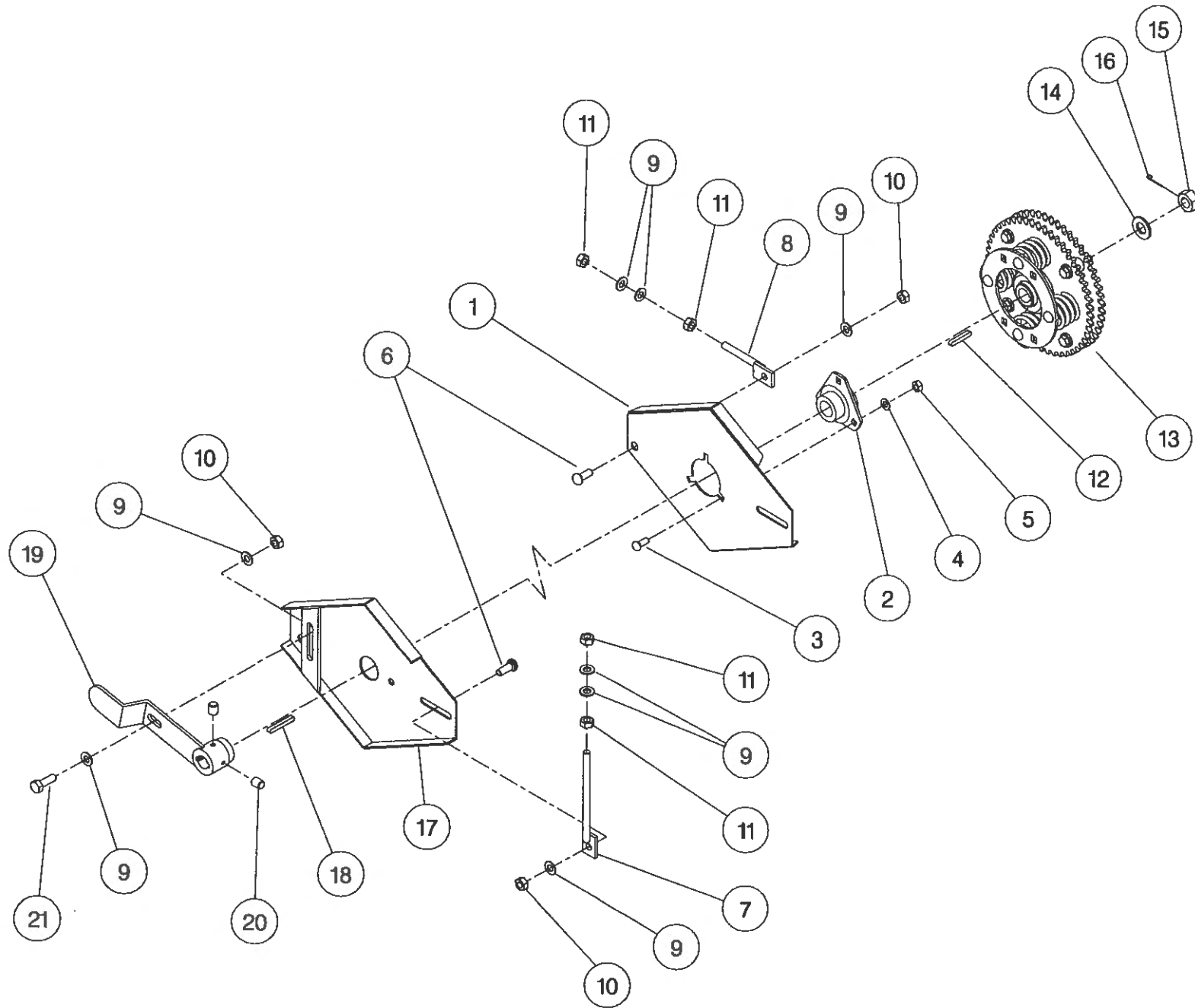
ASSY NUMBER: 196078 01				ASSY DESCRIPTION: TORPEDO DIVIDERS FOR RX & CX MACHINES			
ITEM	PART NO	DESCRIPTION	QTY	ITEM	PART NO	DESCRIPTION	QTY
1	192533 01	DIVIDER ARM LH	1				
2	192533 02	DIVIDER ARM RH	1				
3	192537 01	DIVIDING PLATE LH	1				
4	192537 02	DIVIDING PLATE RH	1				
5	191770 01	NOSE CONE	2				
6	191862 01	SHOE	2				
7	HSS-0191	SETSCREW	8				
8	NUT-0265	NUT	8				
9	WSH-0015	WASHER	8				
10	HSS-0155	BOLT	2				
11	WSH-0058	WASHER	2				



196078

**Shelbourne Reynolds Engineering Limited**

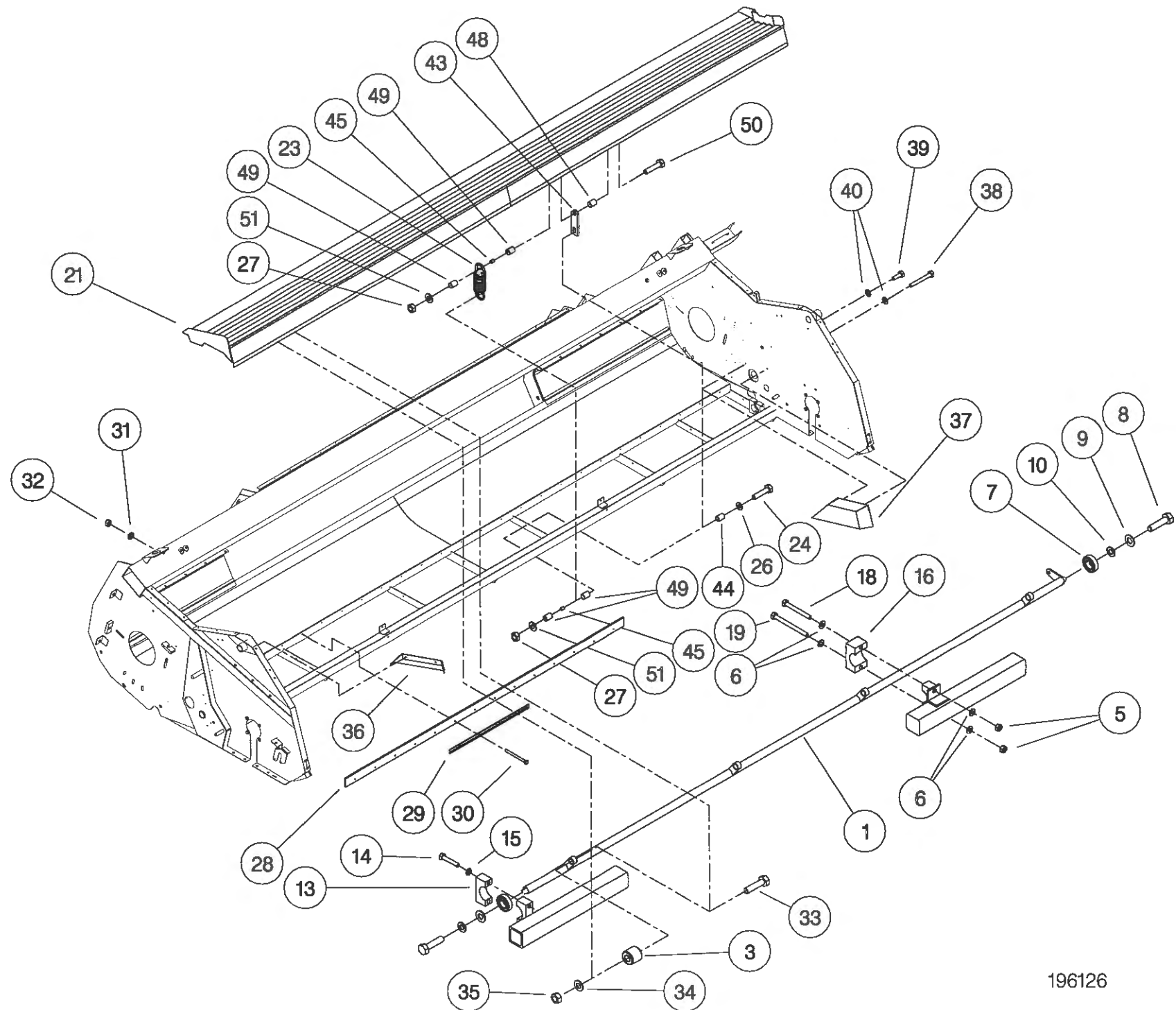
ASSY NUMBER: 196102 05				ASSY DESCRIPTION: AUGER MOUNTING/DRIVE KIT (RX4.2) 1997			
ITEM	PART NO	DESCRIPTION	QTY	ITEM	PART NO	DESCRIPTION	QTY
1	200035 03	SUPPORT PLATE L.H.	1				
2	BRG-0240	BEARING	1				
3	BLT-3745	COACH BOLT	3				
4	WSH-0015	PLAIN WASHER	3				
5	NUT-0265	NYLOC NUT	3				
6	BLT-3790	COACH BOLT	4				
7	192636 06	VERTICAL ADJUSTER	2				
8	192636 01	HORIZONTAL ADJUSTER	2				
9	WSH-0018	PLAIN WASHER	14				
10	NUT-0269	NYLOC NUT	5				
11	NUT-0170	PLAIN NUT	8				
12	K0807050	KEY	1				
13	KIT-00116	AUGER SLIP CLUTCH (SEE PARTS LIST KIT-00116)	1				
14	WSH-0030	PLAIN WASHER	1				
15	NUT-0580	CASTLE NUT	1				
16	PIN-1150	SPLIT PIN	1				
17	200038 01	SUPPORT PLATE R.H.	1				
18	K0807060	KEY	1				
19	200120 02	ADJUSTER ASSY	1				
20	SCW-4535	GRUB SCREW	2				
21	HSS-0241	SET SCREW	1				



**Shelbourne Reynolds Engineering Limited**

ASSY NUMBER: 196126 08				ASSY DESCRIPTION: SHAKER PAN SUB - RX48			
ITEM	PART NO	DESCRIPTION	QTY	ITEM	PART NO	DESCRIPTION	QTY
1	193524 01	TORSION TUBE (4.8M)	1	38	BLTA06320	BOLT	2
2				39	HSS-0084	SET SCREW	2
3	BSH-1530	RUBBER BUSH INSERT	4	40	WSH-0056	SPRING WASHER	4
4				41			
5	NUT-0265	NYLOC NUT	4	42			
6	WSH-0015	FLAT WASHER	8	43	192969 01	RETAINER	4
7	BRG-1995	BEARING	2	44	192970 01	TUBE	4
8	HSS-0315	SET SCREW	2	45	PSP-01201	PLASTIC SPACER	8
9	WSH-0070	SPRING WASHER	2	46			
10	WSH-0024	PLAIN WASHER	2	47			
11				48	192970 02	TUBE	4
12				49	PSP-01800	PLASTIC SPACER	16
13	192264 02	CLAMP BLOCK TOP	2	50	BLTA08530	BOLT	4
14	BLTA10350	BOLT	4	51	WSH-1038	PENNY WASHER	8
15	WSH-0061	SPRING WASHER	4				
16	192266 01	PIVOT BLOCK (PAIR)	2				
17							
18	BLTA10530	BOLT	2				
19	HSSA10680	SETSCREW	2				
20							
21	193525 01	SHAKER PAN ASSY (4.8M)	1				
22							
23	SPGA32221	SPRING	4				
24	BLTA08500	BOLT	4				
25							
26	WSH-0012	WASHER	4				
27	NUT-0263	NUT	8				
28	193532 01	SEAL STRIP	2				
29	192273 01	CLAMP STRIP	8				
30	BLTA06470	BOLT	32				
31	WSH-0009	FLAT WASHER	32				
32	NUT-0260	NYLOC NUT	32				
33	HSS-0265	SET SCREW	4				
34	WSH-0018	PLAIN WASHER	4				
35	NUT-0269	NYLOC NUT	4				
36	192355 01	END DEFLECTOR R.H.	1				
37	192354 01	END DEFLECTOR L.H.	1				





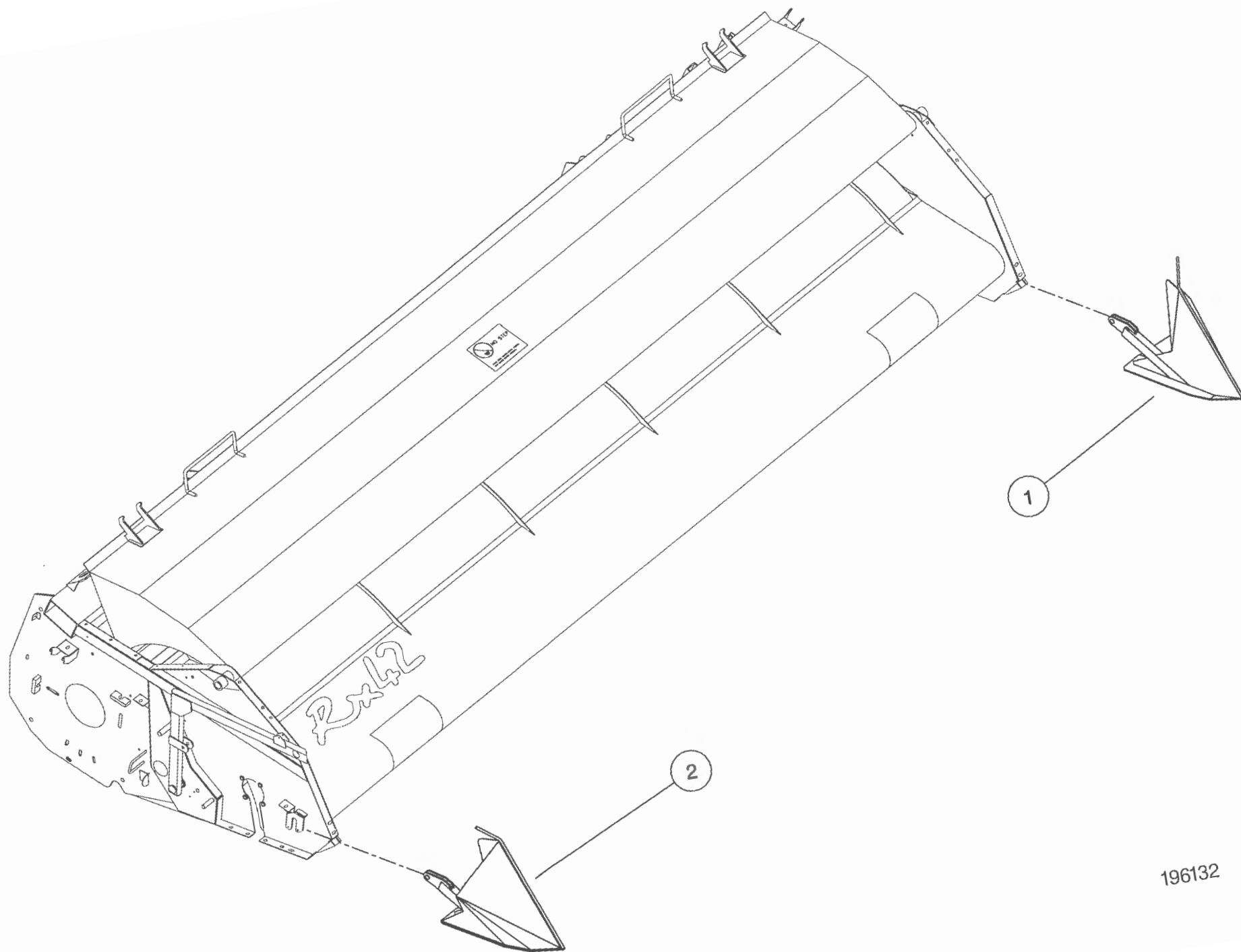
**Shelbourne Reynolds Engineering Limited**

ASSY NUMBER: 196127 08				ASSY DESCRIPTION: TOP DOOR COWL ASSY (RX48)			
ITEM	PART NO	DESCRIPTION	QTY	ITEM	PART NO	DESCRIPTION	QTY
1	193519 01	COWL ASSY (RX48)	1				
2	BSH-3030	BUSH	2				
3	192813 01	LARGE WASHER	2				
4	192812 01	COWL PIN	2				
5	NIP-0001	GREASE ZERK	2				
6	GSTA14407	GAS STRUTT	1				
7	WSH-0061	WASHER	1				
8	WSH-0015	WASHER	1				
9	NUT-0265	NUT	1				
10	BLTA10290	BOLT	2				
11	EDS-11600	SEAL STRIP	4.8m				
12	192718 01	TRANSFER (NO STEP)	2				



## 18

ASSY NUMBER: 196132 01				ASSY DESCRIPTION: SHORT DIVIDERS SUB (RX & CX)			
ITEM	PART NO	DESCRIPTION	QTY	ITEM	PART NO	DESCRIPTION	QTY
1	193348 01	SHORT DIVIDER LH	1				
2	193348 02	SHORT DIVIDER RH	1				

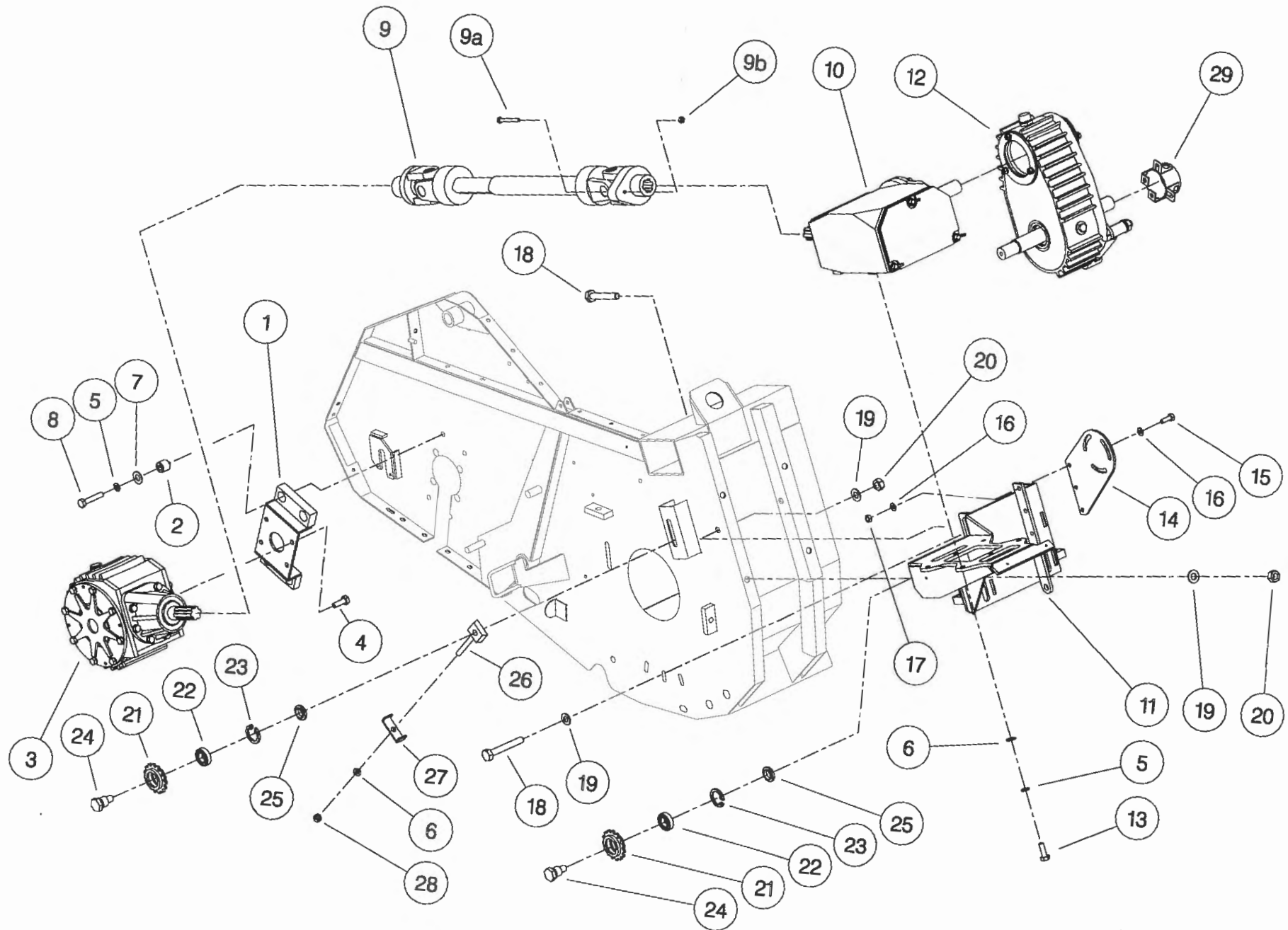


196132

**Shelbourne Reynolds Engineering Limited**

ASSY NUMBER: 196134 01 ASSY DESCRIPTION: ROTOR/AUGER DRIVE 1998 4.2/4.8M)

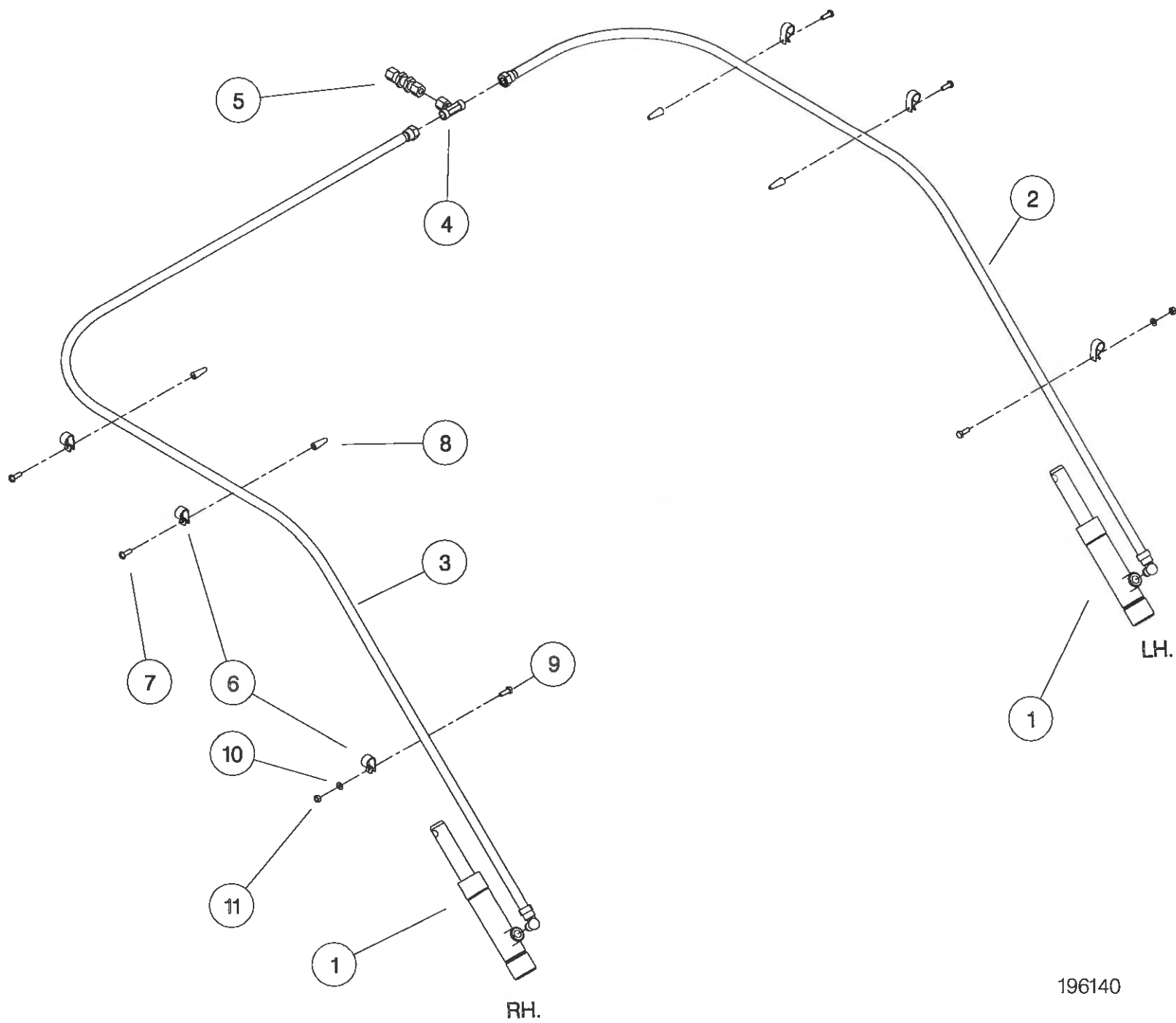
ITEM	PART NO	DESCRIPTION	QTY	ITEM	PART NO	DESCRIPTION	QTY
1	191652 01	GEARBOX BRACKET	1				
2	BSH-1530	BUSH	4				
3	GEA-0095	BEVEL GEARBOX (SEE PARTS LIST GEA-0095)	1				
4	HSSG12174	SET SCREW	4				
5	WSH-0065	SPRING WASHER	10				
6	WSH-0018	PLAIN WASHER	7				
7	190119 04	PLAIN WASHER	4				
8	BLTA12290	BOLT	4				
9	PTO-09011	POWER SHAFT	1				
9a	BLTA07320	SHEAR BOLT					
9b	NUT-0162	NUT					
10	GEA-0135	FIVE SPEED GEARBOX ASSY (SEE PARTS LIST GEA-0135)	1				
11	192091 01	GEARBOX BRACKET (ALUM./FINS)	1				
12	GEA-0101	SHORT DROPBOX ASSY (SEE PARTS LIST GEA-0101)	1				
OR	GEA-0106	LONG DROPBOX ASSY (SEE PARTS LIST GEA-0106)	1				
13	HSS-0238	SET SCREW	6				
14	191680 01	DROP BOX SUPPORT PLATE	1				
15	HSS-0194	SET SCREW	3				
16	WSH-0015	PLAIN WASHER	6				
17	NUT-0265	NYLOC NUT	3				
18	HSS-0330	SETSCREW	4				
19	WSH-0024	PLAIN WASHER	6				
20	NUT-0271	NYLOC NUT	4				
21	131014 01	SPROCKET IDLER	2				
22	BRG-1995	BEARING	2				
23	CIR-0470	CIRCLIP	2				
24	190060 06	IDLER SPINDLE	2				
25	191040 01	IDLER SPACER	2				
26	191777 01	IDLER ADJ SCREW	1				
27	191774 01	PLATE	1				
28	NUT-0269	NUT	1				
29	KIT-00525	PTO GUARD KIT	1				



**Shelbourne Reynolds Engineering Limited**

ASSY NUMBER: 196140 08				ASSY DESCRIPTION: HYDRAULIC CIRCUIT SUB 4.8M			
ITEM	PART NO	DESCRIPTION	QTY	ITEM	PART NO	DESCRIPTION	QTY
1	REF	HYDRAULIC RAM	2				
2	HHBC22610	HYDRAULIC HOSE LH	1				
3	HHBC47610	HYDRAULIC HOSE RH	1				
4	HPPD07100	HYD.TEE FITTING	1				
5	FIT-0213	HYD.BULKHEAD FITT.	1				
6	CLP-01012	P CLIP	6				
7	SCW-5180	SELF TAP SCREW	4				
8	PFS-00500	PANEL FASTENER	4				
9	HSS-0086	SETSCREW	2				
10	WSH-0009	PLAIN WASHER	2				
11	NUT-0260	NYLOC NUT	2				





196140



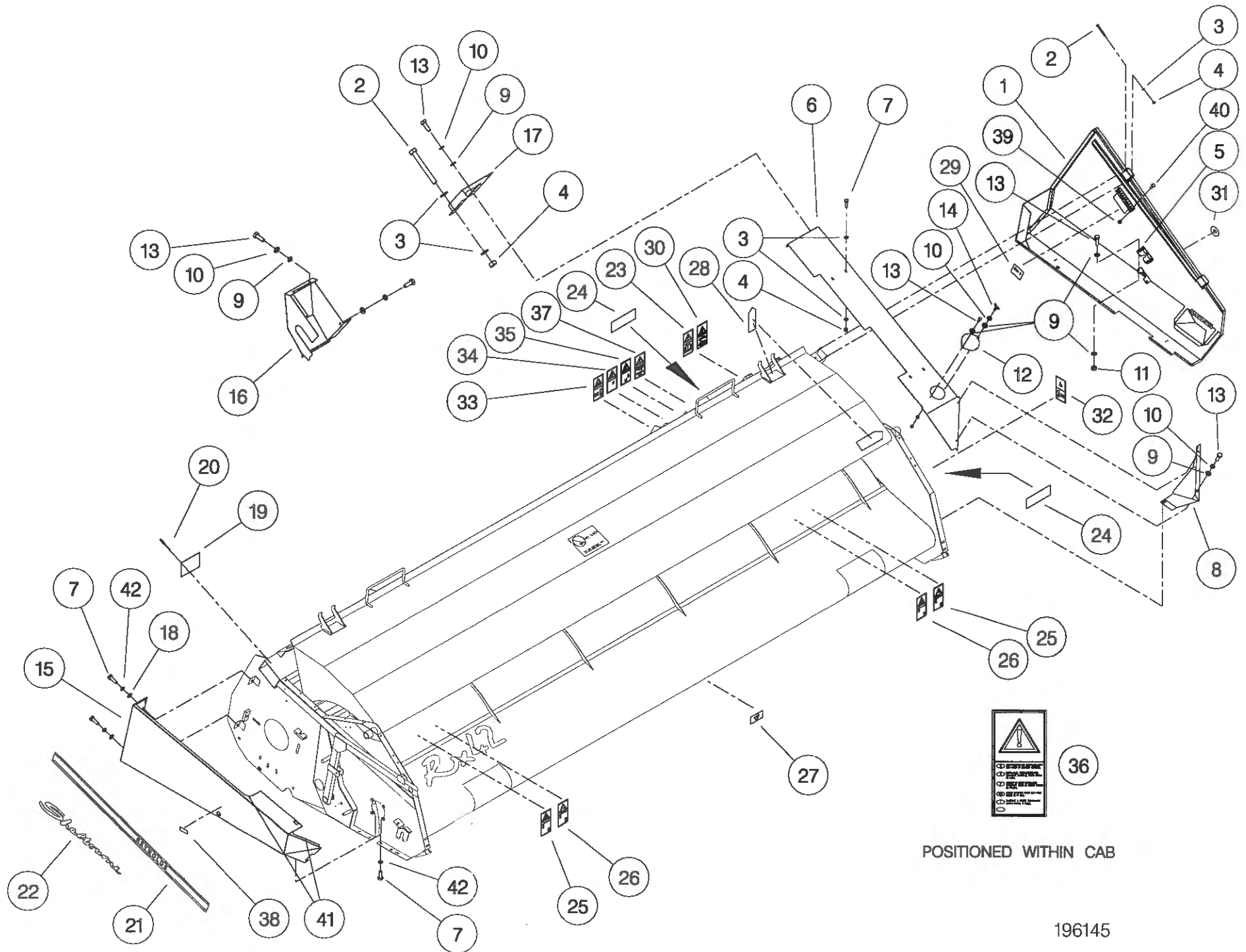
**Shelbourne Reynolds Engineering Limited**

ASSY NUMBER: 196145 03 ASSY DESCRIPTION: RX48,RX42 EMBLEMS AND GUARDS SUB(1998)

ITEM	PART NO	DESCRIPTION	QTY	ITEM	PART NO	DESCRIPTION	QTY
1	193338 01	L.H.GUARD	1				
2	BLTA08470	BOLT	3				
3	WSH-0012	PLAIN WASHER	12				
4	NUT-0263	NYLOC NUT	8				
5	LTC-00040	SLAM LATCH	1				
6	193297 01	L.H. TOP COVER	1				
7	HSS-0140	SET SCREW	9				
8	192570 01	FRONT DEFLECTOR L.H.	1				
9	WSH-0009	PLAIN WASHER	10				
10	WSH-0056	SPRING WASHER	8				
11	NUT-0260	NYLOC NUT	3				
12	191355 01	COVER	1				
13	HSS-0084	SET SCREW	12				
14	SCW-4700	WING SCREW	1				
15	193478 01	R.H.GUARD	1				
16	192555 01	REAR DRIVE GUARD	1				
17	193346 01	REAR UPPER GUARD	1				
18	WSH-1038	PENNY WASHER	3				
19	191359 01	IDENTIFICATION PLATE	1				
20	POP-0006	POP RIVET	4				
21	191983 01	EMBLEM (STRIPES & REYNOLDS)	2				
22	191982 01	EMBLEM (SHELBOURNE)	2				
23	610257 01	EMBLEM (READ MANUAL)	1				
24	127075 12	EMBLEM (GREASE 10 HOURS)	2				
25	193388 01	EMBLEM (FLYING OBJECTS)	2				
26	193389 01	EMBLEM (KEEP AWAY)	2				
27	193395 01	EMBLEM (TENSILOCK)	4				
28	190702 04	EMBLEM (SLING POINT)	4				
29	191940 01	EMBLEM (SHEARBOLT PART No.)	1				
30	610250 01	EMBLEM (SAFETY MAINTENANCE)	1				
31	192953 01	EMBLEM (1/4 TURN)	1				
32	193392 01	EMBLEM (STOP ENG BEFORE...)	1				
33	193393 01	EMBLEM (STOP ENG BEFORE...)	1				
34	193390 01	EMBLEM (DONT HANG CHAIN)	1				
35	193391 01	EMBLEM (PTO GUARD)	1				
36	193394 01	EMBLEM (ENGAGE STRIP ROTOR)	1				
37	193387 01	EMBLEM (AUGER/ROTOR SPEED)	1				
38	127075 16	EMBLEM (GREASE 50 HOURS)	6				

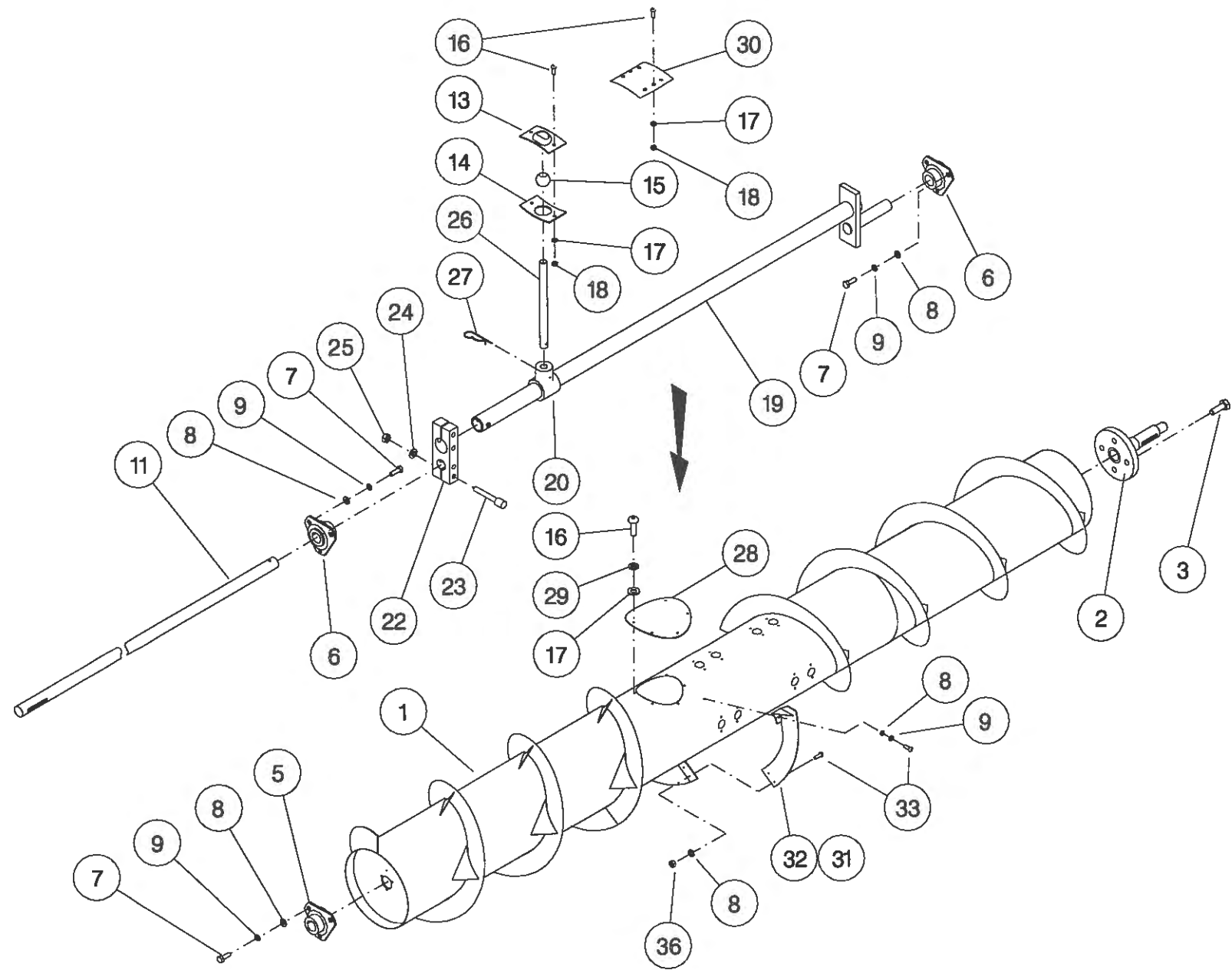
**Shelbourne Reynolds Engineering Limited**

ASSY NUMBER: 196145 03 CONTINUED				ASSY DESCRIPTION: RX48,RX42 EMBLEMS AND GUARDS SUB(1998)			
ITEM	PART NO	DESCRIPTION	QTY	ITEM	PART NO	DESCRIPTION	QTY
39	NUT-0162	NUT	10				
40	BLTA07320	SHEARBOLT	10				
41	EDS-11400	EDGING STRIP	1.5				
42	WSH-0058	WASHER	4				



**Shelbourne Reynolds Engineering Limited**

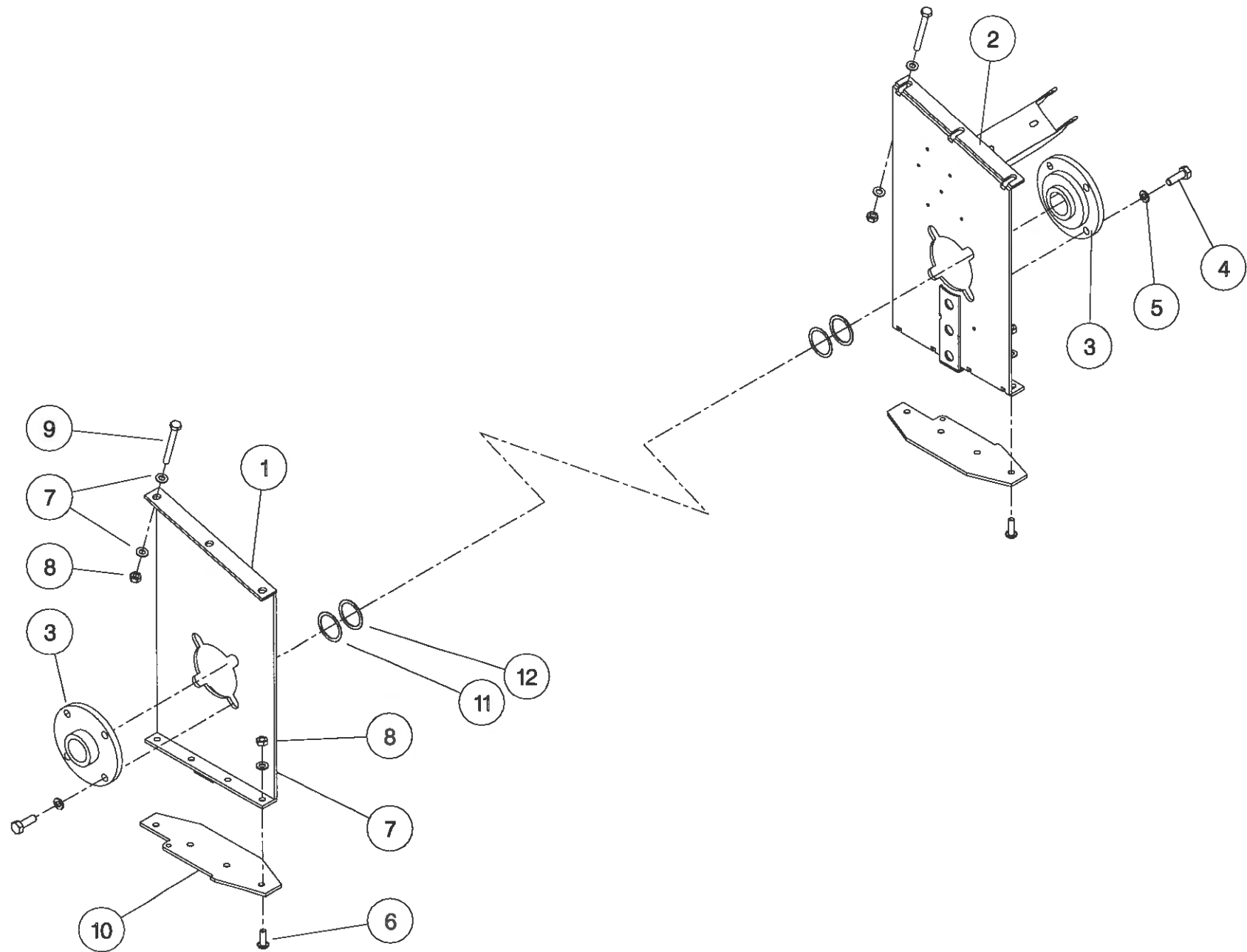
ASSY NUMBER: 196148 08				ASSY DESCRIPTION: AUGER ASSY 4.8M (1998)			
ITEM	PART NO	DESCRIPTION	QTY	ITEM	PART NO	DESCRIPTION	QTY
1	193521 01	AUGER W.ASSY.	1	27	AUG-03000	HAIRPIN COTTER	
2	192011 01	AUGER DRIVE SHAFT	1			(16 FINGERS OPTION)	16
3	HSSF12204	SET SCREW	4	OR		(20 FINGERS OPTION)	20
4				OR		(24 FINGERS OPTION)	24
5	BRG-0218	BEARING	1	28	193203 01	COVER PLATE	2
6	BRG-7080	BEARING	2	29	WSH-0056	SPRING WASHER	12
7	HSS-0140	SET SCREW	9	30	190735 01	BLANKING PLATE	
8	WSH-0012	PLAIN WASHER	15			(16 FINGERS OPTION)	8
9	WSH-0058	SPRING WASHER	11	OR		(20 FINGERS OPTION)	4
10				OR		(24 FINGERS OPTION)	0
11	192223 06	AUGER SHAFT	1	31	192227 01	AUGER FLIGHT EXTENSION LH	1
12				32	192227 02	AUGER FLIGHT EXTENSION RH	1
13	AUG-01000	UPPER FINGER PL.(CONCAVE)		33	SCBA08172	BUT. SCKT HD SCREW	6
		(16 FINGERS OPTION)	16	34			
OR		(20 FINGERS OPTION)	20	35			
OR		(24 FINGERS OPTION)	24	36	NUT-0263	NUT	4
14	AUG-01500	LOWER FINGER PL.(CONVEX)					
		(16 FINGERS OPTION)	16				
OR		(20 FINGERS OPTION)	20				
OR		(24 FINGERS OPTION)	24				
15	AUG-02000	FINGER GUIDE(BALL)					
		(16 FINGERS OPTION)	16				
OR		(20 FINGERS OPTION)	20				
OR		(24 FINGERS OPTION)	24				
16	SCW-4960	BUTT.HD.SKT.SCREW	60				
17	WSH-0009	PLAIN WASHER	60				
18	NUT-0260	NYLOC NUT	48				
19	192311 01	AUGER CRANK	1				
20	AUG-02500	FINGER HOLDER	24				
21							
22	192307 01	AUGER CLAMP	1				
23	SCCA10412	CAP HD SKT SCREW	4				
24	WSH-0015	PLAIN WASHER	4				
25	NUT-0265	NYLOC NUT	4				
26	192310 01	FINGER (16mm DIA.)					
		(16 FINGERS OPTION)	16				
OR		(20 FINGERS OPTION)	20				
OR		(24 FINGERS OPTION)	24				



**Shelbourne Reynolds Engineering Limited**

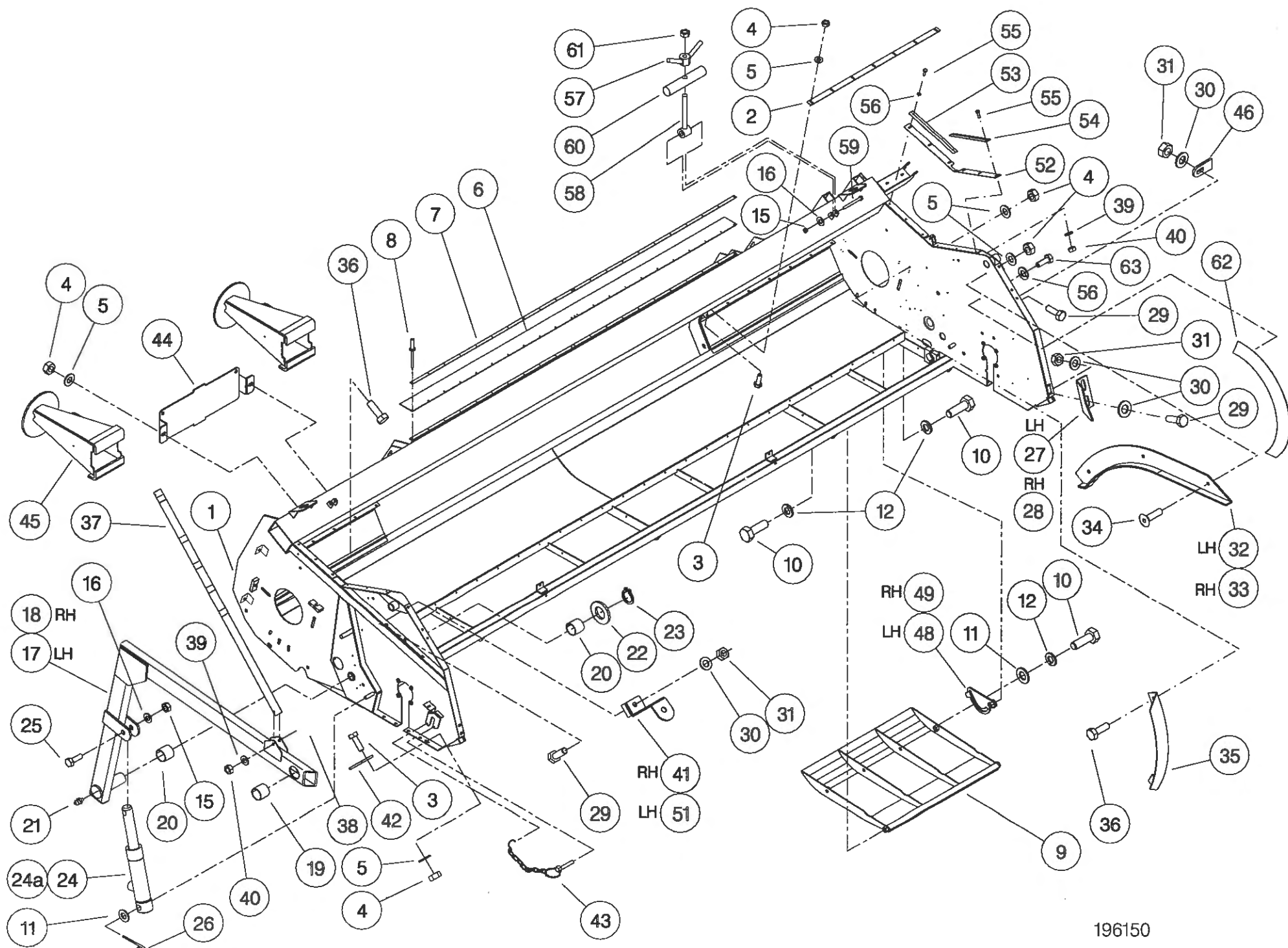
ASSY NUMBER: 196149 01				ASSY DESCRIPTION: RX ROTOR MTG SUB			
ITEM	PART NO	DESCRIPTION	QTY	ITEM	PART NO	DESCRIPTION	QTY
1	193504 01	ROTOR MTG PLATE R.H	1				
2	193295 01	ROTOR MTG PLATE L.H	1				
3	BRG-3275	BEARING	2				
4	HSS-0238	SETSCREW	8				
5	WSH-0065	WASHER	8				
6	SCW-0515	SCREW	8				
7	WSH-0015	WASHER	20				
8	NUT-0265	NUT	14				
9	BLTA10520	BOLT	6				
10	193220 01	DIVIDING PLATE	2				
11	192876 01	SHIM (1mm THICK)					
12	192876 02	SHIM (2mm THICK)					





**Shelbourne Reynolds Engineering Limited**

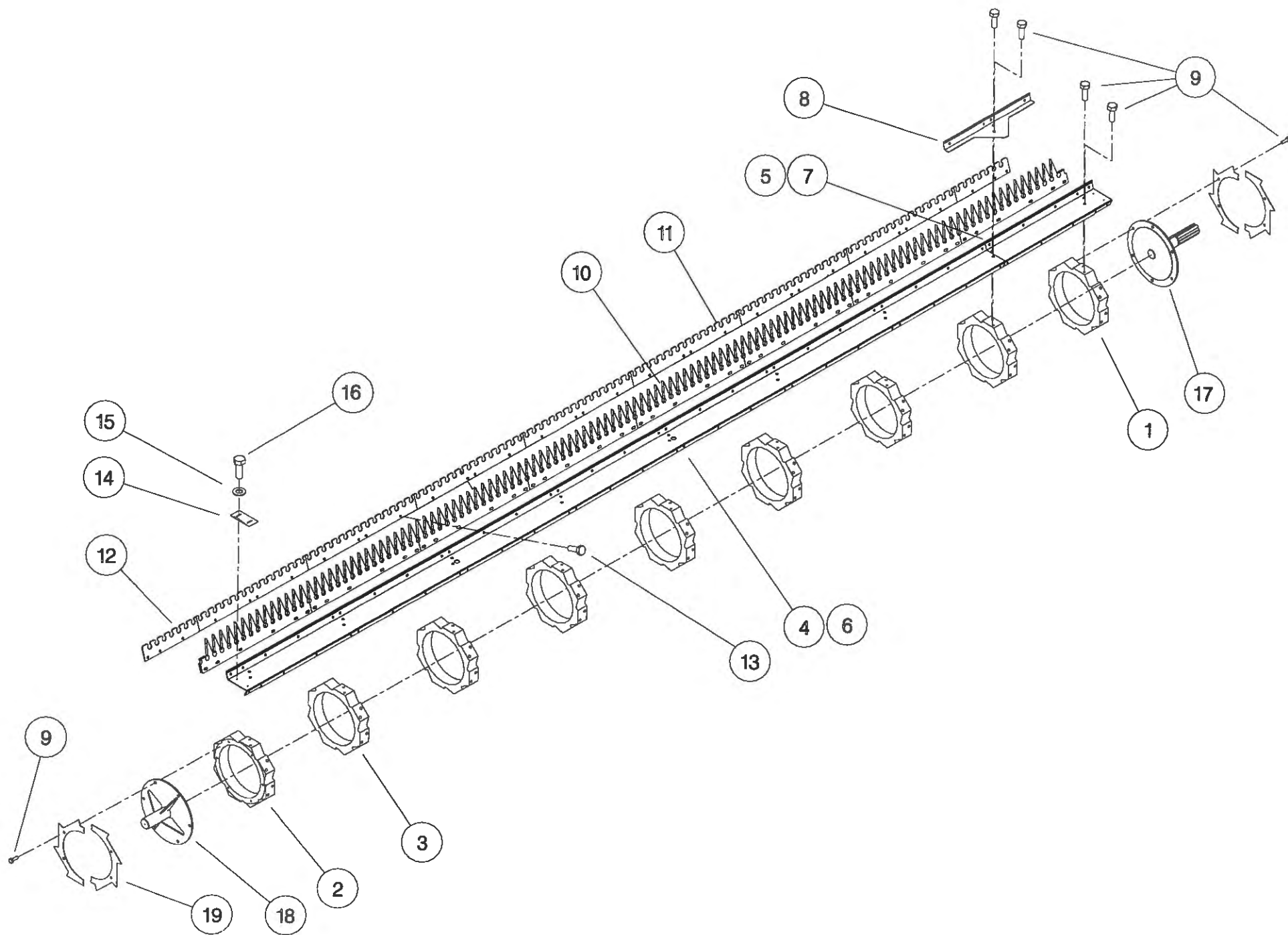
ASSY NUMBER: 196150 08				ASSY DESCRIPTION: FRAME & PARTS SUB (RX48-1998)			
ITEM	PART NO	DESCRIPTION	QTY	ITEM	PART NO	DESCRIPTION	QTY
1	193538 01	RX48 MAIN FRAME ASSY	1	38	HSS-0092	SETSCREW	1
2	193536 02	STRIPPER PLATE	2	39	WSH-0009	PLAIN WASHER	7
3	BLT-4710	COACH BOLT	20	40	NUT-0260	NYLOC NUT	7
4	NUT-0263	NUT	32	41	193480 01	SUPPORT BRACKET RH	1
5	WSH-0012	WASHER	32	42	192543 01	CROP DIVIDER ADJ.PLATE	2
6	191340 01	RUBBER SEAL	1	43	PIN-01790	LYNCH PIN & CHAIN	2
7	191339 01	CLAMP STRIP	2	44	193221 01	HEADER STAND BRACKET	1
8	POP-0006	POP RIVET	22	45	193222 01	HEADER FRONT STAND	2
9	193219 01	SKID	2	46	192550 01	NOSE ARM STOP PLATE	1
10	HSS-0316	SET SCREW	12	47			
11	WSH-0024	WASHER	6	48	192954 01	SKID ADJUSTER PLATE L.H	2
12	WSH-0070	WASHER	12	49	192954 02	SKID ADJUSTER PLATE R.H	2
13				50			
14				51	193480 02	SUPPORT BRACKET LH	1
15	NUT-0269	NUT	4	52	193231 01	RUBBER SEAL	2
16	WSH-0018	WASHER	4	53	193229 01	SEAL CLAMP	2
17	191259 02	ADJ COWL SUPPORT ARM R.H	1	54	193230 01	SEAL CLAMP	2
18	191259 01	ADJ COWL SUPPORT ARM L.H	1	55	SCW-4960	BUTT.HD.SKT SCREW	12
19	BSH-3030	BUSH	2	56	WSH-0056	SPRING WASHER	12
20	BSH-3070	BUSH	4	57	193244 01	RETAINING NUT	2
21	NIP-0001	GREASE ZERK	2	58	193248 01	RETAINING SCREW	2
22	WSH-1547	WASHER	2	59	BLTA12380	BOLT	2
23	CIR-1150	CIRCLIP	2	60	193251 01	RETAINING BAR	2
24	193506 01	HYDRAULIC RAM	2	61	NUT-0170	PLAIN NUT	2
24a	RMSK00030	SEAL KIT		62	193363 01	ROTOR DEFLECTOR	2
25	HSS-0260	SET SCREW	2	63	HSS-0084	SETSCREW	6
26	PIN-1150	SPLIT PIN	2				
27	192193 01	ADJ COWL STOP L.H	1				
28	192193 02	ADJ COWL STOP R.H	1				
29	HSS-0194	SET SCREW	7				
30	WSH-0015	WASHER	11				
31	NUT-0265	NUT	7				
32	192055 01	RUNNER ASSY L.H	1				
33	192055 02	RUNNER ASSY R.H	1				
34	SCW-1735	SCREW	6				
35	192304 01	AUGER END DEFLECTOR	2				
36	HSS-0140	SET SCREW	6				
37	192494 01	INDICATOR ROD	1				



**Shelbourne Reynolds Engineering Limited**

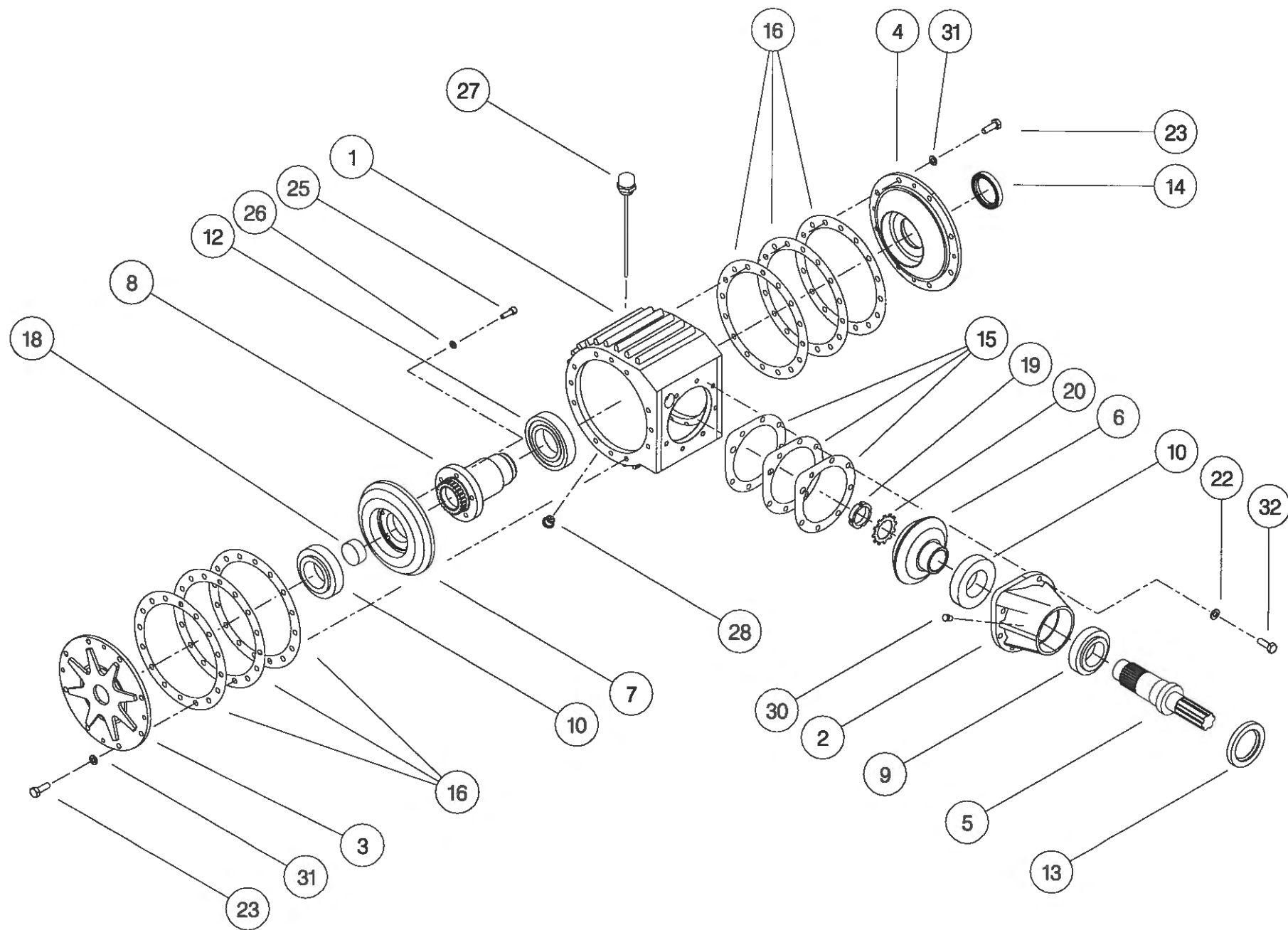
ASSY NUMBER: 196151 08 ASSY DESCRIPTION: STRIPPING ROTOR ASSY 4.8m

ITEM	PART NO	DESCRIPTION	QTY	ITEM	PART NO	DESCRIPTION	QTY
1	192892 01	OUTER HUB CASTING L.H.	1				
2	192892 02	OUTER HUB CASTING R.H.	1				
3	192892 03	INNER HUB CASTING	7				
4	193526 01	ROTOR SECTION 4.2 LH	4				
5	193526 07	ROTOR SECTION 0.6 LH	4				
6	193527 01	ROTOR SECTION 4.2 RH	4				
7	193527 07	ROTOR SECTION 0.6 RH	4				
8	193528 01	STRENGTHENING PLATE	8				
9	HSSG10204	SETSCREW	156				
10	191968 02	ELITE ELEMENT RICE	64				
OR	193087 01	ELITE ELEMENT (SLOTTED)	64				
11	192291 01	ANTI WEAR STRIP CTR.	56				
OR	192291 07	S-TYPE STRIP CTR	56				
12	192291 02	ANTI WEAR STRIP END	16				
OR	192291 08	S-TYPE STRIP END	16				
13	HSSF08204	SETSCREW	272				
14	192679 01	ANTI WRAP PLATE	16				
15	WSH-1034	PENNY WASHER	32				
16	SCW-5180	SELF TAP SCREW	32				
17	192897 01	DRIVE SHAFT W/A	1				
18	192899 01	IDLE SHAFT W/A	1				
19	192959 01	OUTER CLAMP RING (HALF)	4				



**Shelbourne Reynolds Engineering Limited**

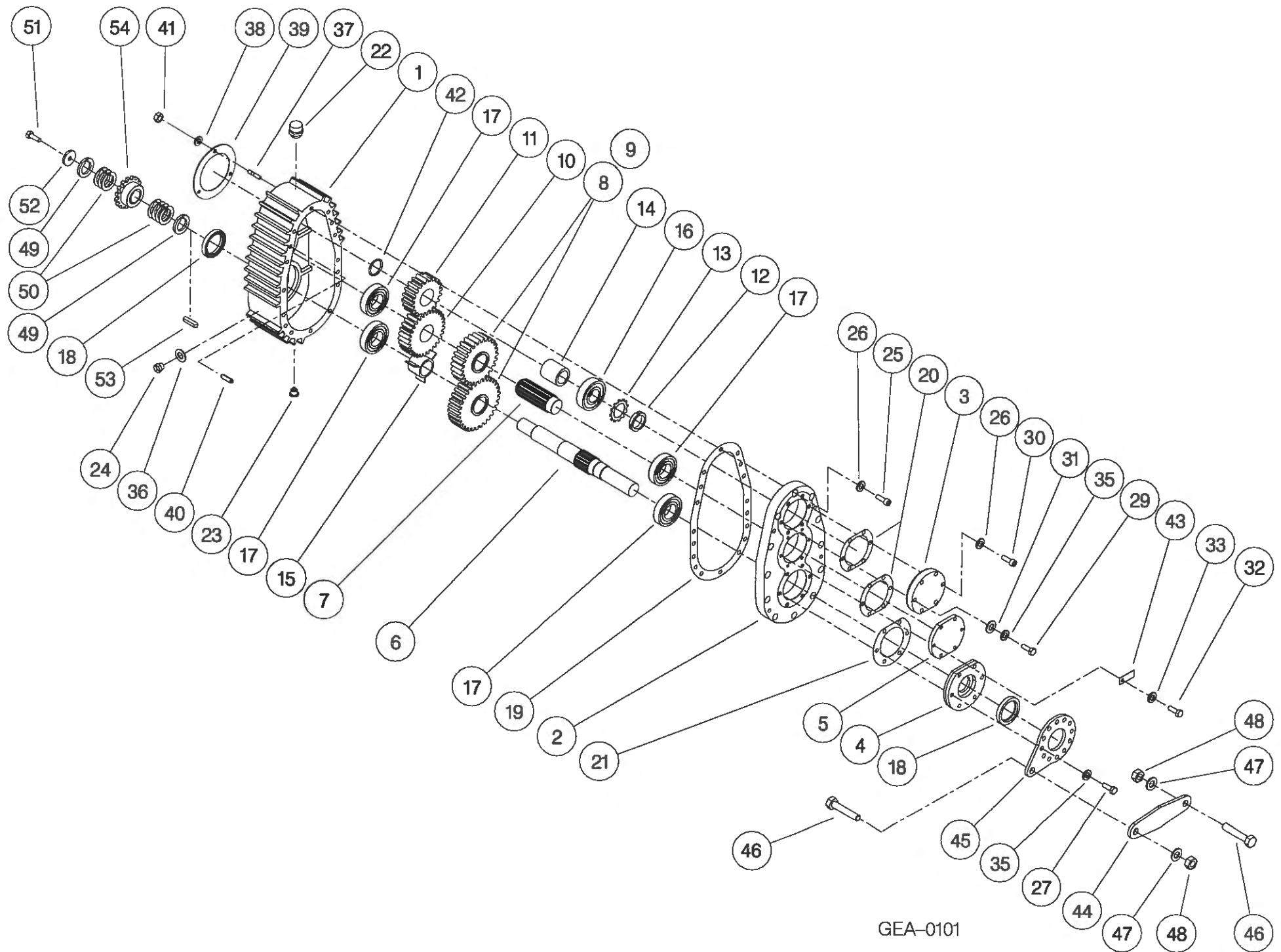
ASSY NUMBER: GEA-0095				ASSY DESCRIPTION: BEVEL GEARBOX (1.5:1)			
ITEM	PART NO	DESCRIPTION	QTY	ITEM	PART NO	DESCRIPTION	QTY
1	191715 01	GEARBOX CASING	1				
2	191716 01	INPUT HOUSING	1				
3	191717 01	OUTSIDE END COVER	1				
4	191718 01	INSIDE END COVER	1				
5	191719 01	INPUT SHAFT (17T INVOLUTE)	1				
or	191819 01	INPUT SHAFT (28T INVOLUTE)	1				
6	191720 01	BEVEL GEAR 20T (17T INV)	1				
or	191798 01	BEVEL GEAR 20T (28T INV)	1				
7	191721 01	BEVEL GEAR 30T (26T INV)	1				
or	191799 01	BEVEL GEAR 30T (25T INV)	1				
8	191722 01	OUTPUT SHAFT (26T INVOLUTE)	1				
or	191800 01	OUTPUT SHAFT (25T INVOLUTE)	1				
9	BRG-7000	BEARING	1				
10	BRG-7020	BEARING	2				
11							
12	BRG-7040	BEARING	1				
13	SEA-0590	ROTARY SHAFT SEAL	1				
14	SEA-0600	ROTARY SHAFT SEAL	1				
15	191812	SHIM PACK (INPUT)	1				
16	191813	SHIM PACK (ENDS)	2				
17							
18	191735 01	SHAFT PLUG	1				
19	NUT-3010	LOCK RING	1				
20	WSH-6010	LOCK WASHER	1				
21							
22	WSH-1096	SHAKEPROOF WASHER	7				
23	HSS-1054	SET SCREW	23				
24							
25	SCW-0139	CAP HEAD SCREW	5				
26	WSH-0058	SPRING WASHER	5				
27	FIT-0254	BREATHER/DIP STICK	1				
28	FIT-0253	MAGNETIC DRAIN PLUG	1				
29							
30	FIT-0223	TAPER PLUG	1				
31	WSH-1145	SPRING WASHER	16				



**Shelbourne Reynolds Engineering Limited**

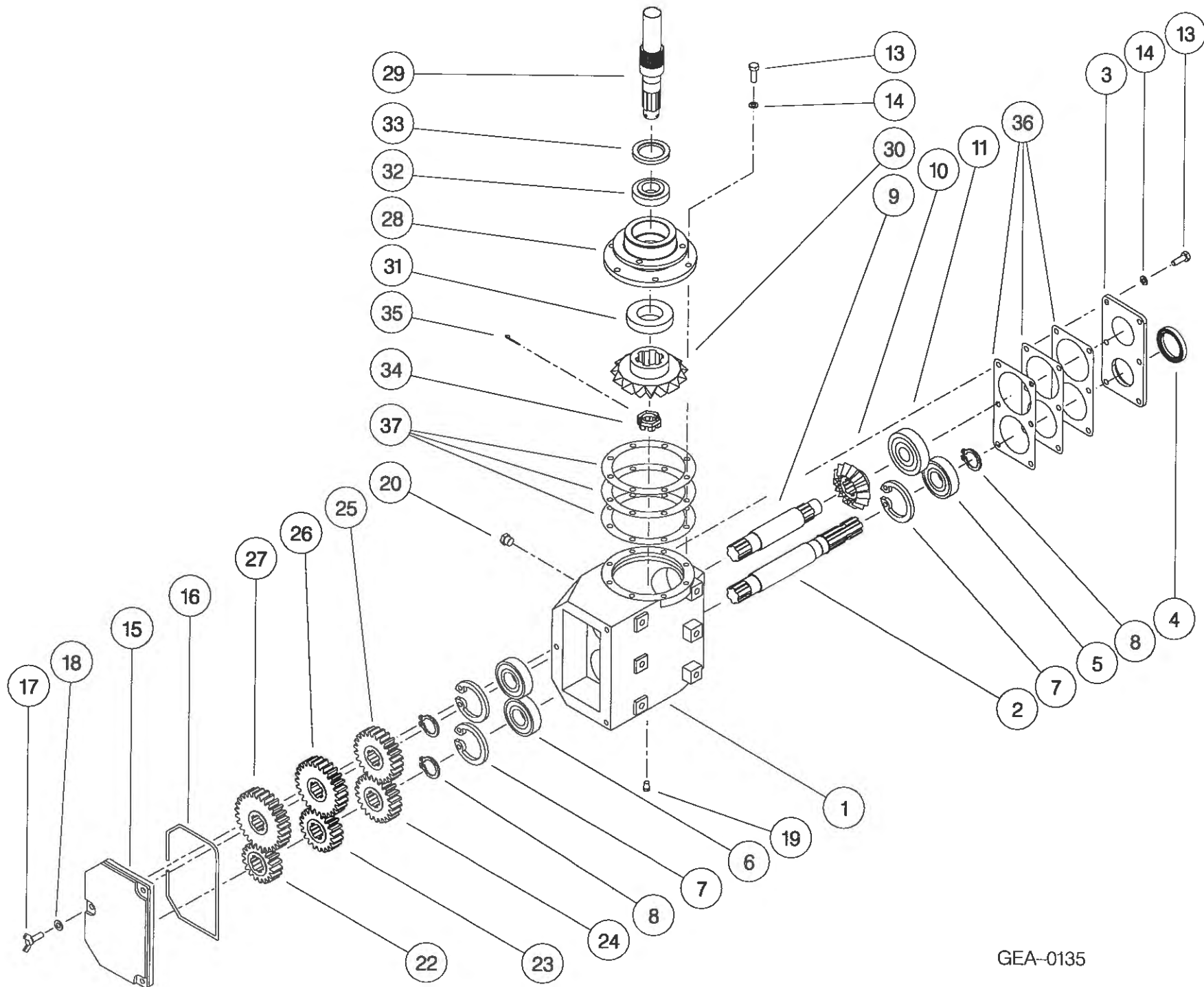
ASSY NUMBER: GEA-0101				ASSY DESCRIPTION: SHORT DROPBOX FOR RX & CX (1996)			
ITEM	PART NO	DESCRIPTION	QTY	ITEM	PART NO	DESCRIPTION	QTY
1	191723 01	GEARCASE	1	38	WSH-0012	PLAIN WASHER	3
2	191723 02	LID	1	39	191759 01	SEAL	1
3	191696 01	OUTPUT END CAP	1	40	191765 01	DOWL	2
4	191694 01	INPUT FLANGE	1	41	NUT-0263	NYLOC NUT	3
5	191693 01	END CAP	1	42	CIR-4000	SNAP RING CIRCLIP	1
6	191807 01	INPUT/AUGER OUTPUT SHAFT (28T INVOLUTE)	1	43	191928 01	IDENTIFICATION TAG	1
7	191801 01	INTERMED. SHAFT (28T INV)	1	44	193097 01	FIXED LINK	1
8	*	CHANGE GEAR (SEE DRIVE SUB)		45	191687 01	LINK BRACKET	1
9	*	CHANGE GEAR (SEE DRIVE SUB)		46	HSS-0316	SET SCREW	2
10	191803 01	SPUR GEAR 30T (28T INV)	1	47	WSH-0024	WASHER	2
11	191884 01	SPUR GEAR 20T (28T INV)	1	48	NUT-0271	NUT	2
12	NUT-3000	LOCK RING	1	49	191692 01	SPACER	2
13	WSH-6000	LOCK WASHER	1	50	191692 02	SHIM	7
14	191725 01	SPACER	1	51	HSSF10174	SET SCREW	1
15	191894 01	SPACER	1	52	190548 01	PLAIN WASHER	1
16	BRG-6600	BEARING	1	53	K1008045	KEY	1
17	BRG-5800	BEARING	4	54	*	AUGER SPROCKET (SEE DRIVE SUB)	
18	SEA-0610	ROTARY SHAFT SEAL	2				
19	191756 01	GASKET	1				
20	191757	SEAL PACK	2				
21	191758	SEAL PACK	1				
22	FIT-0255	BREATHER	1				
23	FIT-0253	MAGNETIC DRAIN PLUG1					
24	FIT-0251	LEVEL PLUG	1				
25	SCW-0196	CAP HEAD SCREW	12				
26	WSH-1301	SHAKEPROOF WASHER	15				
27	HSS-0202	SETSCREW	6				
28							
29	BLTA10290	BOLT	3				
30	SCW-0190	CAP HEAD SCREW	3				
31	WSH-0015	PLAIN WASHER	3				
32	HSS-0145	SET SCREW	6				
33	WSH-1300	SHAKEPROOF WASHER	6				
34							
35	WSH-0061	SPRING WASHER	9				
36	WSH-1010	DOWTY WASHER	1				
37	191737 01	STUD	3				





**Shelbourne Reynolds Engineering Limited**

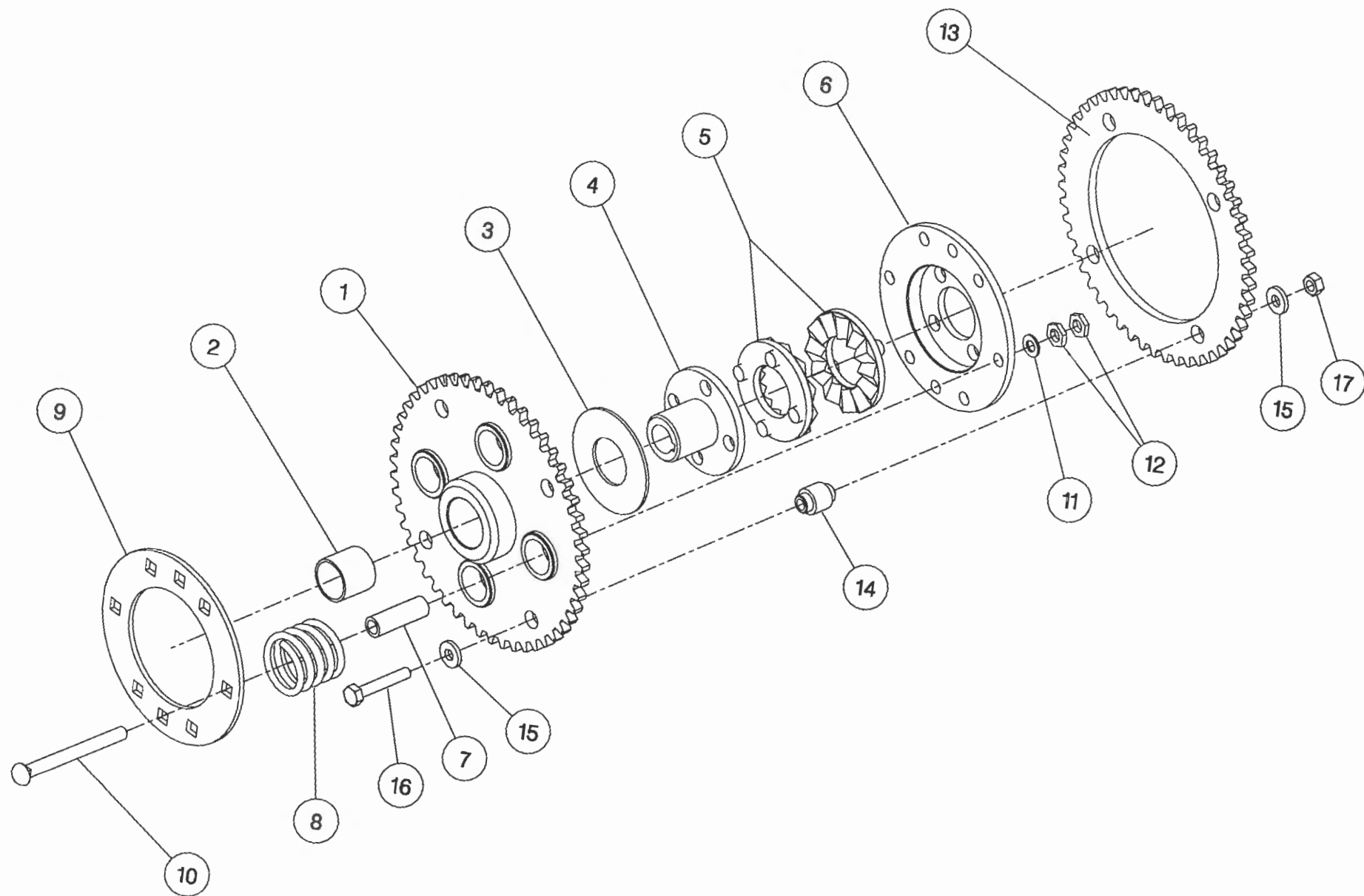
ASSY NUMBER: GEA-0135				ASSY DESCRIPTION: 5 SPEED G.BOX ASSY ALUM/FINNED 1997 (WITH DROP BOX)			
ITEM	PART NO	DESCRIPTION	QTY	ITEM	PART NO	DESCRIPTION	QTY
1	191821 01	GEARBOX CASING	1				
2	191829 01	INPUT SHAFT	1				
3	191825 01	SEAL HOUSING	1				
4	SEA-0550	ROTARY SHAFT SEAL	1				
5	BRG-6600	BEARING	1				
6	BRG-6601	BEARING	2				
7	CIR-3800	CIRCLIP	3				
8	CIR-2700	CIRCLIP	3				
9	191828 01	LAYSHAFT	1				
10	191823 01	BEVEL GEAR (15T)	1				
11	BRG-6800	BEARING	1				
12							
13	HSS-0194	SET SCREW	14				
14	WSH-0061	SPRING WASHER	14				
15	192924 01	REMOVABLE COVER	1				
16	ORA260000	'O' RING SEAL STRIP	0.7				
17	SCW-4760	WING SCREW	3				
18	WSH-1301	SHAKEPROOF WASHER	3				
19	FIT-0223	PLUG	1				
20	FIT-0218	BREATHER	1				
21							
22	191822 18	CHANGE GEAR (18T)	1				
23	191822 20	CHANGE GEAR (20T)	1				
24	191822 22	CHANGE GEAR (22T)	1				
25	191822 24	CHANGE GEAR (24T)	1				
26	191822 26	CHANGE GEAR (26T)	1				
27	191822 28	CHANGE GEAR (28T)	1				
28	191691 02	OUTPUT HOUSING (HOLES,1997)	1				
29	191885 01	OUTPUT SHAFT	1				
30	191824 01	BEVEL GEAR (18T)	1				
31	BRG-6000	BEARING	1				
32	BRG-5700	BEARING	1				
33	SEA-0565	ROTARY SHAFT SEAL	1				
34	191843 01	SLOTTED NUT	1				
35	PIN-1168	SPLIT PIN	1				
36	191830	GASKET SET	1				
37	191831	GASKET SET	1				



GEA-0135

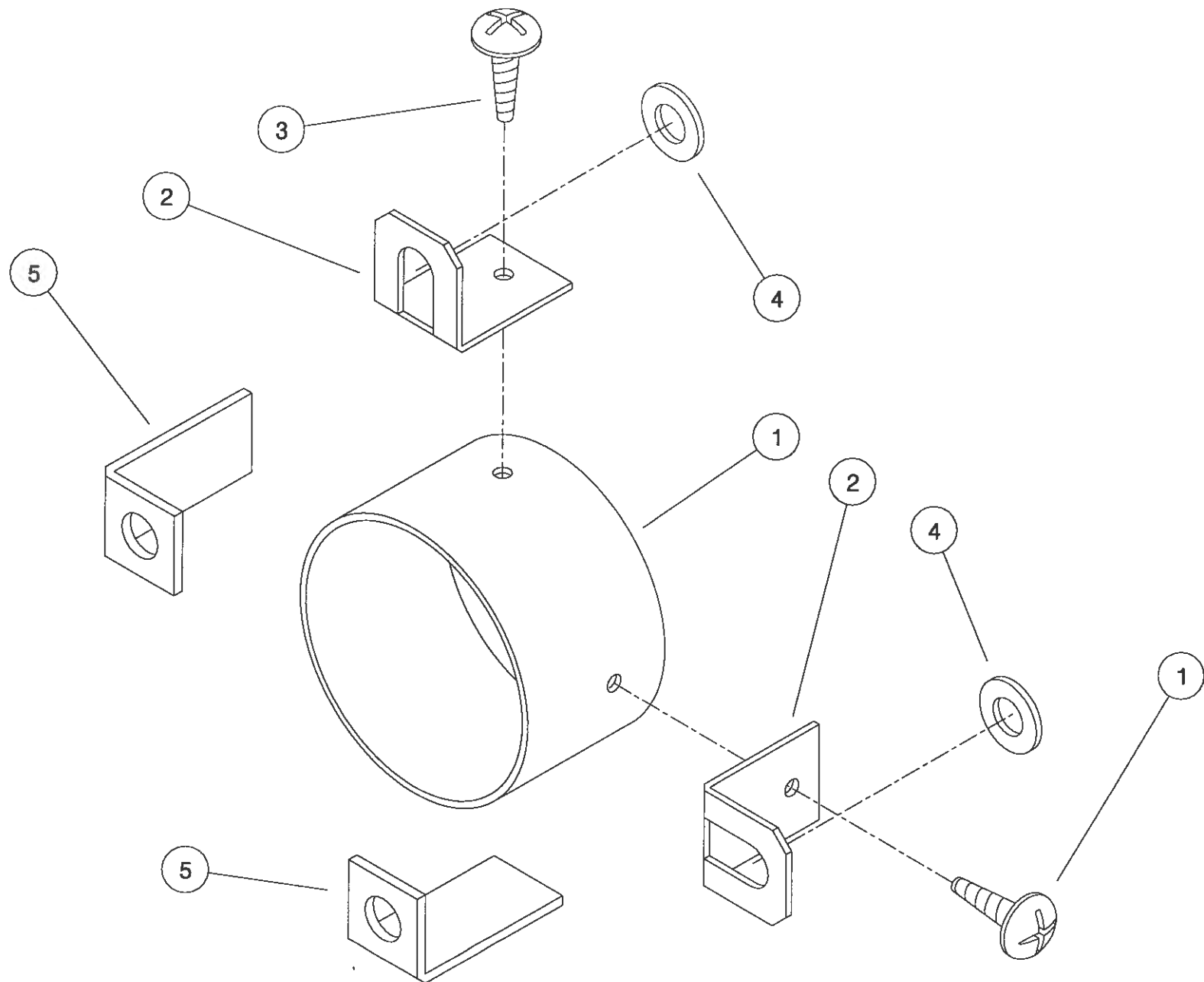
**Shelbourne Reynolds Engineering Limited**

ASSY NUMBER:		KIT-00116		ASSY DESCRIPTION:		AUGER DRIVE SPROCKET/CLUTCH ASSY	
ITEM	PART NO	DESCRIPTION	QTY	ITEM	PART NO	DESCRIPTION	QTY
1	192018 01	SPROCKET ASSY 50T	1				
2	BSH-3019	BUSH	1				
3	192008 01	THRUST WASHER	1				
4	192013 01	CLUTCH HUB	1				
5	131005	CLUTCH PLATE	2				
6	192014 01	DRIVE DISC	1				
7	131073 02	SPACER	4				
8	131063	SPRING	4				
9	192009 01	FIXING RING	1				
10	BLTF12563	COACH BOLT	4				
11	WSH-0018	PLAIN WASHER	4				
12	NUT-0370	HALF NUT	8				
13	192254 01	SPROCKET 50T	1				
14	192253 02	SPACER	4				
15	190119 11	WASHER	8				
16	BLTA10440	BOLT	4				
17	NUT-0265	NYLOC NUT	4				



## 44

ASSY NUMBER:		KIT-00525				ASSY DESCRIPTION: PTO END GUARD	
ITEM	PART NO	DESCRIPTION	QTY	ITEM	PART NO	DESCRIPTION	QTY
1	192985 06	GUARD TUBE	1				
2	192992 01	GUARD SECURING BRACKET	2				
3	SCW-5104	SCREW	2				
4	WSH-0015	WASHER	2				
5	191763 01	PTO BRACKET	2				



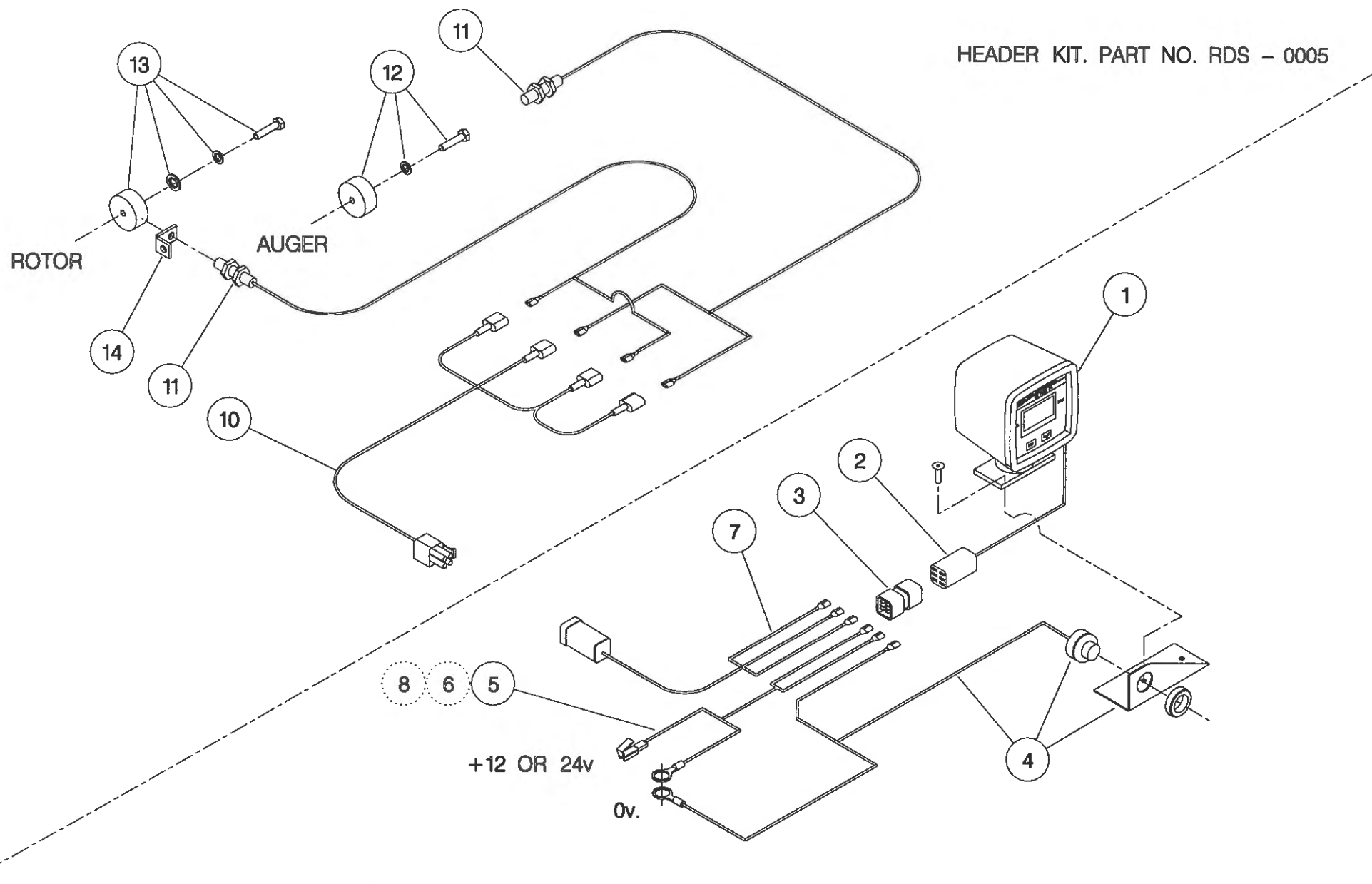
THIS KIT FIXES TO :  
R.X HEADERS - DIRECTLY ON TO DROP BOX ASSY.  
C.X HEADERS - ON TO REAR SHAFT SUPPORT BEARING PLATE.

KIT-00525

**Shelbourne Reynolds Engineering Limited**

ASSY NUMBER: RDS-0001/RDS-0005				ASSY DESCRIPTION: TACHO KIT			
ITEM	PART NO	DESCRIPTION	QTY	ITEM	PART NO	DESCRIPTION	QTY
1	RDS-0010	TACHO HEAD COMPLETE	1	13	RDS-0020	MAGNET CARRIER ,	1
2	RDS-0011	TACHO HEAD PLUG & ARMS	1			SET SCREW ,	1
3	RDS-0012	HARTING CONNECTOR &	1			PENNY WASHER &	1
		STICKER	1			SPRING WASHER	1
4	RDS-0013	AUDIBLE ALARM,	1	14	RDS-0021	ROTOR SENSOR BRACKET	1
		FIXING BRACKET &	1				
		SELF TAP.SCREWS	2				
5	RDS-0014	POWER CONNECTION LEAD	1				
6	FUS-0022	FUSE	1				
7	RDS-0015	COMBINE LEAD	1				
8	RDS-0016	24V-12V CONVERTER KIT (NOT INCLUDED IN RDS-0001)	1				
9							
10	RDS-0017	HEADER LEAD	1				
11	RDS-0018	SHAFT SENSOR	2				
12	RDS-0019	MAGNET ,	1				
		TAPTITE BOLT &	1				
		FIBRE WASHER	1				





COMBINE KIT. PART NO. RDS - 0001

NOTE :

ITEM 6 IS USED IF POWER SUPPLY IS NOT FUSED.

ITEM 8 IS USED IF POWER SUPPLY IS 24V, -VE EARTH. (NOT INCLUDED IN RDS - 0001 ).

ITEM 4 (ALARM ) IS BUILT INTO ITEM 1 (TACHO HEAD ) ON LATER MODELS.



# **NUMERIC PARTS LIST**

<b>PART No.</b>	<b>PAGE</b>	<b>PART No.</b>	<b>PAGE</b>	<b>PART No.</b>	<b>PAGE</b>
127075 12	25	191774 01	20	192227 01	28
127075 16	25	191777 01	8	192227 02	28
131005	42		20	192253 02	42
131014 01	8	191798 01	36	192254 01	42
	20	191799 01	36	192258 01	8
131063	42	191800 01	36	192263 01	8
131073 02	42	191801 01	38	192265 01	8
190060 06	8	191803 01	38	192266 01	14
	20	191807 01	38	192273 01	14
190119 04	20	191812	36	192304 01	32
190119 05	6	191813	36	192307 01	28
190119 11	42	191819 01	36	192311 01	28
190361 01	6	191821 01	40	192344 01	8
190548 01	38	191822 18	40	192354 01	14
190702 04	25	191822 20	40	192355 01	14
191040 01	8	191822 22	40	192494 01	32
	20	191822 24	40	192524 11	6
191259 01	32	191822 26	40	192533 01	10
191259 02	32	191822 28	40	192533 02	10
191339 01	32	191823 01	40	192537 01	10
191340 01	32	191824 01	40	192537 02	10
191355 01	25	191825 01	40	192543 01	32
191359 01	25	191828 01	40	192550 01	32
191642 01	6	191829 01	40	192555 01	25
191652 01	20	191830	40	192570 01	25
191680 01	20	191831	40	192636 01	12
191687 01	38	191843 01	40	192636 06	12
191691 02	40	191862 01	10	192679 01	34
191692 01	38	191884 01	38	192718 01	6
191692 02	38	191885 01	40		16
191693 01	38	191894 01	38	192812 01	16
191694 01	38	191928 01	38	192813 01	16
191696 01	38	191940 01	25	192876 01	30
191715 01	36	191981 01	6	192876 02	30
191716 01	36	191982 01	25	192892 01	34
191717 01	36	191983 01	25	192892 02	34
191718 01	36	192008 01	42	192892 03	34
191723 01	38	192009 01	42	192897 01	34
191723 02	38	192011 01	28	192899 01	34
191725 01	38	192013 01	42	192924 01	40
191735 01	36	192014 01	42	192953 01	25
191737 01	38	192018 01	42	192954 01	32
191756 01	38	192037 01	6	192954 02	32
191757	38	192038 01	6	192959 01	34
191758	38	192055 01	32	192969 01	14
191759 01	38	192055 02	32	192970 01	14
191763 01	44	192091 01	20	192970 02	14
191765 01	38	192193 01	32	192985 06	44
191770 01	10	192193 02	32	192992 01	44
191774 01	8	192223 06	28	193097 01	38

# **NUMERIC PARTS LIST**

<b>PART No.</b>	<b>PAGE</b>	<b>PART No.</b>	<b>PAGE</b>	<b>PART No.</b>	<b>PAGE</b>
193118 01	34	610250 01	25	CIR-1125	8
193118 02	34	610257 01	25	CIR-1150	32
193203 01	28	AUG-02500	28	CIR-2700	40
193219 01	32	BLT-2316	8	CIR-3800	40
193220 01	30	BLT-3745	12	CIR-4000	38
193221 01	32	BLT-3790	12	CLP-01012	22
193222 01	32	BLT-4710	32	EDS-11400	25
193229 01	32	BLTA06320	14	EDS-11600	16
193230 01	32	BLTA06470	14	FIT-0213	22
193231 01	32	BLTA07320	25	FIT-0218	40
193244 01	32	BLTA08470	25	FIT-0223	36
193248 01	32	BLTA08500	14		40
193251 01	32	BLTA08530	14	FIT-0251	38
193295 01	30	BLTA10290	16	FIT-0253	36
193297 01	25		38		38
193338 01	25	BLTA10350	14	FIT-0254	36
193346 01	25	BLTA10440	42	FIT-0255	38
193348 01	18	BLTA10520	30	GEA-0095	20
193348 02	18	BLTA10530	14	GEA-0101	20
193363 01	32	BLTA12290	20	GEA-0135	20
193382 01	34	BLTA12380	32	GSTA14407	16
193387 01	25	BLTF12563	42	HHBC2261	22
193388 01	25	BRG-0218	28	HHBC4761	22
193389 01	25	BRG-0240	12	HPPD0710	22
193390 01	25	BRG-1994	8	HSS-0084	14
193391 01	25	BRG-1995	8		25
193392 01	25		14		32
193393 01	25		20	HSS-0086	8
193395 01	25	BRG-22500	8		22
193478 01	25	BRG-3275	30	HSS-0092	32
193480 01	32	BRG-5700	40	HSS-0140	6
193480 02	32	BRG-5800	38		25
193504 01	30	BRG-6000	40		28
193506 01	32	BRG-6600	38		32
193518 01	6		40	HSS-0145	38
193519 01	16	BRG-6601	40	HSS-0155	10
193521 01	28	BRG-6800	40	HSS-0191	10
193524 01	14	BRG-7000	36		36
193525 01	14	BRG-7020	36	HSS-0194	20
193526 01	34	BRG-7040	36		32
193526 07	34	BRG-7080	28		40
193527 01	34	BSH-1530	14	HSS-0202	38
193527 07	34		20	HSS-0238	20
193528 01	34	BSH-3030	16		30
193532 01	14		32	HSS-0241	12
193536 02	32	BSH-3070	32	HSS-0260	32
193538 01	32	BSHZ02553	8	HSS-0265	14
200035 03	12	CHN-01682	8	HSS-0315	14
200038 01	12	CIR-0470	8	HSS-0316	32
200120 02	12		20		38

# **NUMERIC PARTS LIST**

<b>PART No.</b>	<b>PAGE</b>	<b>PART No.</b>	<b>PAGE</b>	<b>PART No.</b>	<b>PAGE</b>
HSS-0318 .....	8	NUT-3000 .....	38	WSH-0015 .....	10
HSS-0330 .....	20	NUT-3010 .....	36	.....	12
HSSA10680 .....	14	ORA260000 .....	40	.....	16
HSSF08204 .....	34	PFS-00500 .....	22	.....	28
HSSF10174 .....	38	PIN-01790 .....	32	.....	30
HSSF12204 .....	28	PIN-1150 .....	12	.....	32
HSSG1020 .....	34	.....	32	.....	38
HSSG1217 .....	20	PIN-1168 .....	40	WSH-0018 .....	8
K0807035 .....	8	POP-0006 .....	6	.....	12
K0807050 .....	12	.....	25	.....	14
K0807060 .....	12	.....	32	.....	20
K1008045 .....	38	PSP-01201 .....	14	.....	32
KIT-00116 .....	12	PSP-01800 .....	14	.....	42
KIT-00525 .....	20	PTO-09011 .....	20	WSH-0024 .....	8
LTC-00040 .....	25	SCBA08172 .....	28	.....	14
NIP-0001 .....	16	SCCA1041 .....	28	.....	20
.....	32	SCW-0139 .....	36	.....	32
NUT-0162 .....	25	SCW-0190 .....	36	.....	38
NUT-0170 .....	12	.....	38	WSH-0030 .....	12
.....	32	SCW-0196 .....	38	WSH-0056 .....	14
NUT-0260 .....	8	SCW-0515 .....	30	.....	25
.....	14	SCW-1735 .....	32	.....	28
.....	22	SCW-4535 .....	12	.....	32
.....	25	SCW-4700 .....	25	WSH-0058 .....	6
.....	28	SCW-4760 .....	40	.....	10
.....	32	SCW-4960 .....	28	.....	25
NUT-0263 .....	14	.....	32	.....	28
.....	25	SCW-5104 .....	44	.....	36
.....	28	SCW-5180 .....	22	WSH-0061 .....	14
.....	32	.....	34	.....	16
.....	38	SEA-0550 .....	40	.....	36
NUT-0265 .....	10	SEA-0565 .....	40	.....	38
.....	12	SEA-0590 .....	36	.....	40
.....	14	SEA-0600 .....	36	WSH-0065 .....	20
.....	16	SEA-0610 .....	38	.....	30
.....	20	SPGA3222 .....	14	WSH-0070 .....	8
.....	28	WSH-0009 .....	8	.....	14
.....	30	.....	14	.....	32
.....	32	.....	22	WSH-1010 .....	38
.....	42	.....	25	WSH-1034 .....	34
NUT-0269 .....	8	.....	28	WSH-1038 .....	14
.....	12	.....	32	.....	25
.....	14	WSH-0012 .....	14	WSH-1300 .....	38
.....	20	.....	25	WSH-1301 .....	36
.....	32	.....	28	.....	38
NUT-0271 .....	8	.....	32	.....	40
.....	20	.....	38	WSH-1547 .....	32
.....	38	WSH-0015 .....	14	WSH-6000 .....	38
NUT-0370 .....	42	.....	20	WSH-6010 .....	36
NUT-0580 .....	12	.....	44		