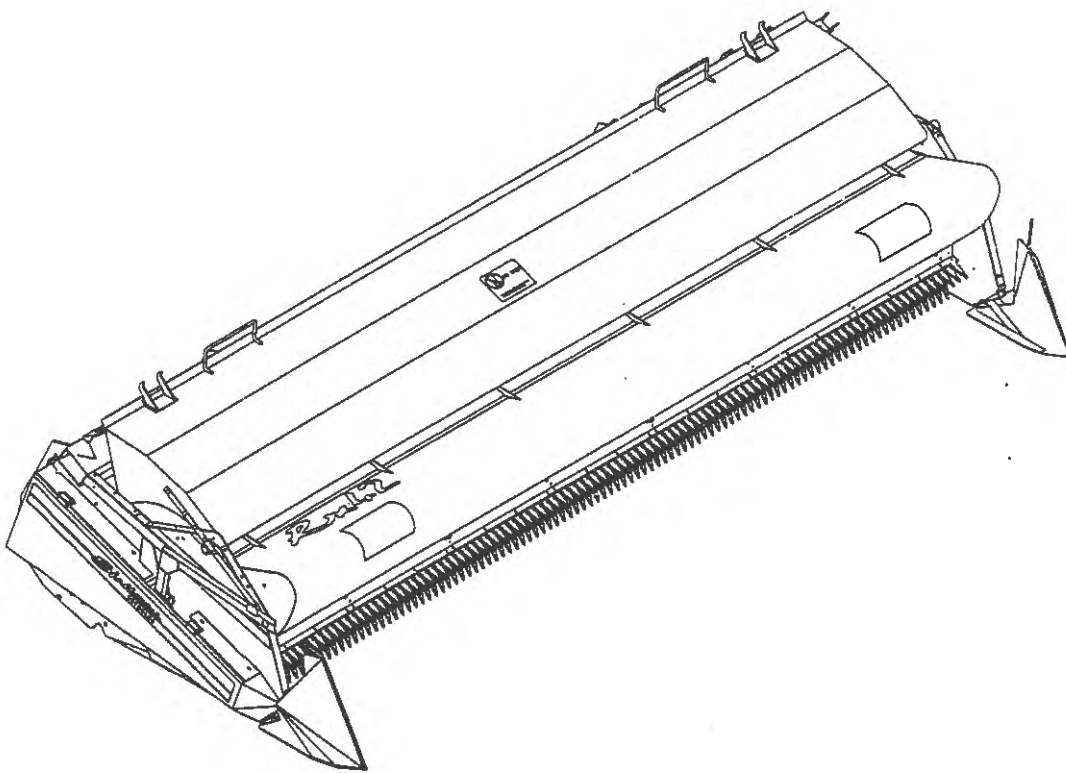


RX42 Shelbourne Header (1997)

PARTS MANUAL



Shelbourne
REYNOLDS

Shelbourne Reynolds Engineering Ltd
Stanton
Bury St Edmunds
Suffolk IP31 2AR
England
Telephone: 01359 250415
Fax. No: 01359 250464

(Stores direct 01359 251231)
(Stores direct 01359 252031)



THE QUEEN'S AWARD FOR
TECHNOLOGICAL ACHIEVEMENT



THE QUEEN'S AWARD FOR
EXPORT ACHIEVEMENT

SHELBOURNE HEADER PARTS MANUAL

Your *Shelbourne* Header is designed to fit many different types of combine.

For this reason the machine number index is broken down into sections for identification. Your serial and machine numbers are listed below:

SHELBOURNE HEADER SERIAL NUMBER _____

SHELBOURNE HEADER MACHINE NUMBER _____

ADAPTOR PLATE ASSEMBLY _____

DRIVE KIT _____

HYDRAULIC FITTING KIT _____

OTHER KIT OPTIONS _____

This manual contains all parts common to the *Shelbourne* Header and is used in conjunction with the combine fittings manual, which contains the adaptor plate, and drive kit parts and fitting, and any other options available.

MACHINE IDENTIFICATION

The *Shelbourne* Header machine identification number is engraved on a plate on the top right hand corner of the header.

The adaptor plate has a plate on the top right hand corner also with the adaptor plate assembly number engraved on it.

The drive kit can be identified by description, and use of the drive kit identification number marked above.

ORDERING SPARE PARTS

To ensure that you order the correct part from your SRE dealer please use the following procedure.

ALWAYS QUOTE THE MACHINE AND SERIAL NUMBERS WHEN ORDERING.

Refer to the front of this parts list book (machine assemblies), decide if the part you want is on:

Shelbourne Head
Adaptor Kit
Drive Kit

If your part is on the Adaptor Kit, identify by matching the part number from the adaptor plate with that in the top left hand corner of the parts lists. You will find the appropriate drawing accompanying the parts list.

If the part you require is on the drive kit, ensure that you have the parts listing for the correct combine model and width. Then progress through to the next drawing following that list, for indication of that part.

If the part you require is on the *Shelbourne* Head assembly, identify the appropriate assembly by matching the part number from the *Shelbourne* Head with the page with the same number marked on the top left hand side.

Use the following sub assembly numbers and descriptions to find the area of the machine that your part is required, i.e. you need a part which is fitted to the auger, your part will be in the auger assembly parts list.

Having decided which sub-assembly your part should be under, use the number beside that sub-assembly description which will begin with 1960-- -- to find the parts listing of the sub-assembly further on in the manual. The number will be printed in the top left hand corner, the sub-assemblies are in numerical order.

Having found the correct parts list, you will find the corresponding drawing by processing through the manual to the next drawing.

The drawings indicate the components by item numbers which you will find are repeated in the left hand side of your parts listing, and therefore referring to the correct part.

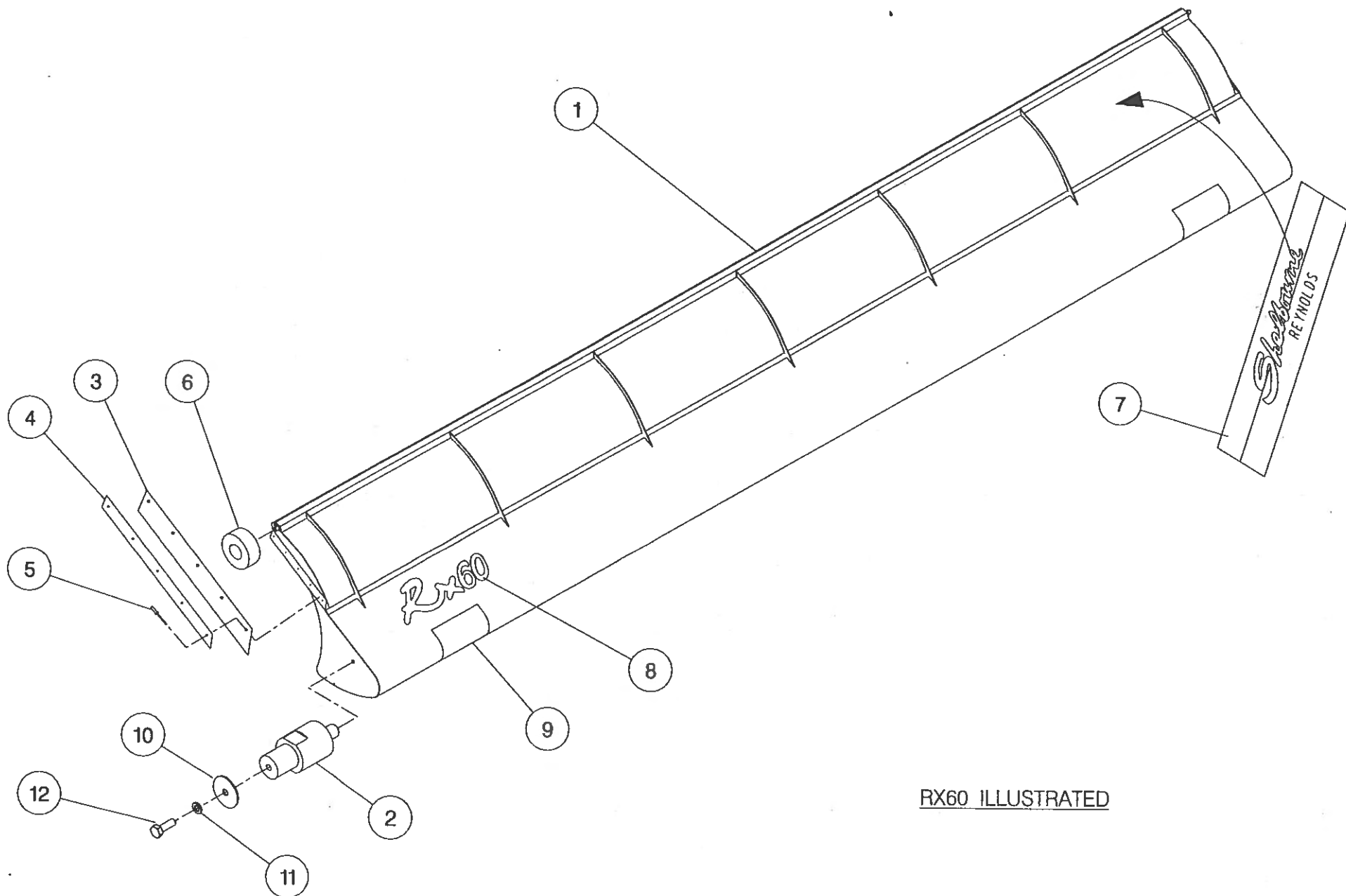
If the item within the sub-assembly is a further collection of parts (i.e. a KIT within a sub assembly) then the parts listing for this will be found just after the 1960-- -- sub-assemblies. These smaller assemblies will be in alphabetical and numerical order.

Shelbourne Reynolds Engineering Limited

ASSY NUMBER: 196542 07

ASSY DESCRIPTION: RX42 SHAKERPAN SHELBOURNE HEADER(1997)

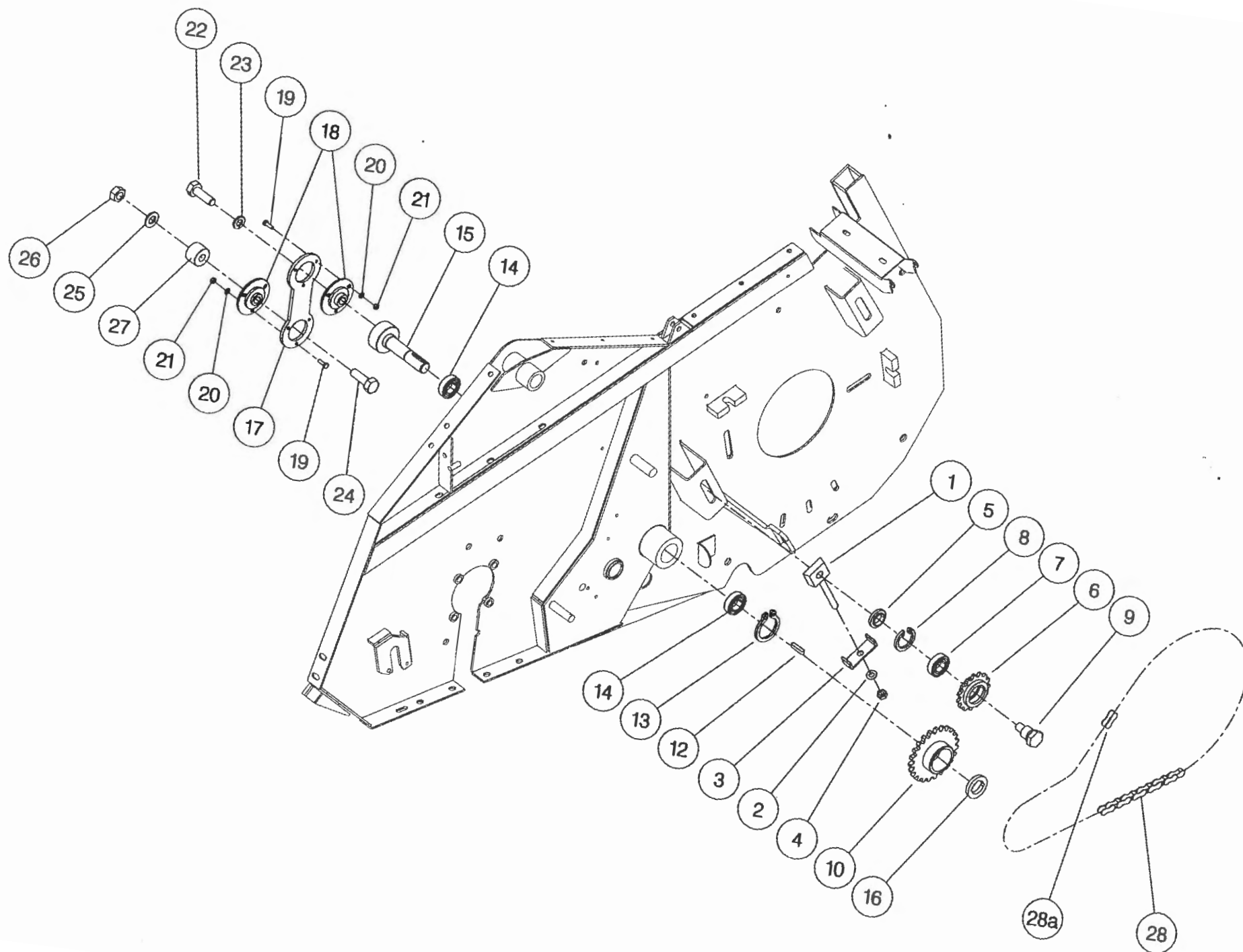
ITEM	PART NO	DESCRIPTION	QTY	ITEM	PART NO	DESCRIPTION	QTY
1	196131 07	FRAME & PARTS	1				
2	196125 07	AUGER ASSY	1				
3	196102 05	AUGER MTG SUB	1				
4	196067 02	DRIVE COMPONENTS	1				
5	196126 07	SHAKER PAN SUB	1				
6	196133 07	STRIPPING ROTOR ASSY	1				
7	196130 01	ROTOR MTG SUB	1				
8	196134 01	ROTOR/AUGER DRIVE SUB	1				
9	196128 07	HYDRAULICS	1				
10	RDS-0005	HEADER MONITORING KIT	1				
11	196127 07	HOOD SUB ASSY	1				
12	196053 07	ADJ CROP DEFLECTOR SUB	1				
13	196118 03	EMBLEMS AND GUARDS	1				
14	196132 01	SHORT DIVIDER SUB	1				
15	RDS-0001	COMBINE MONITOR KIT	1				



RX60 ILLUSTRATED

Shelbourne Reynolds Engineering Limited

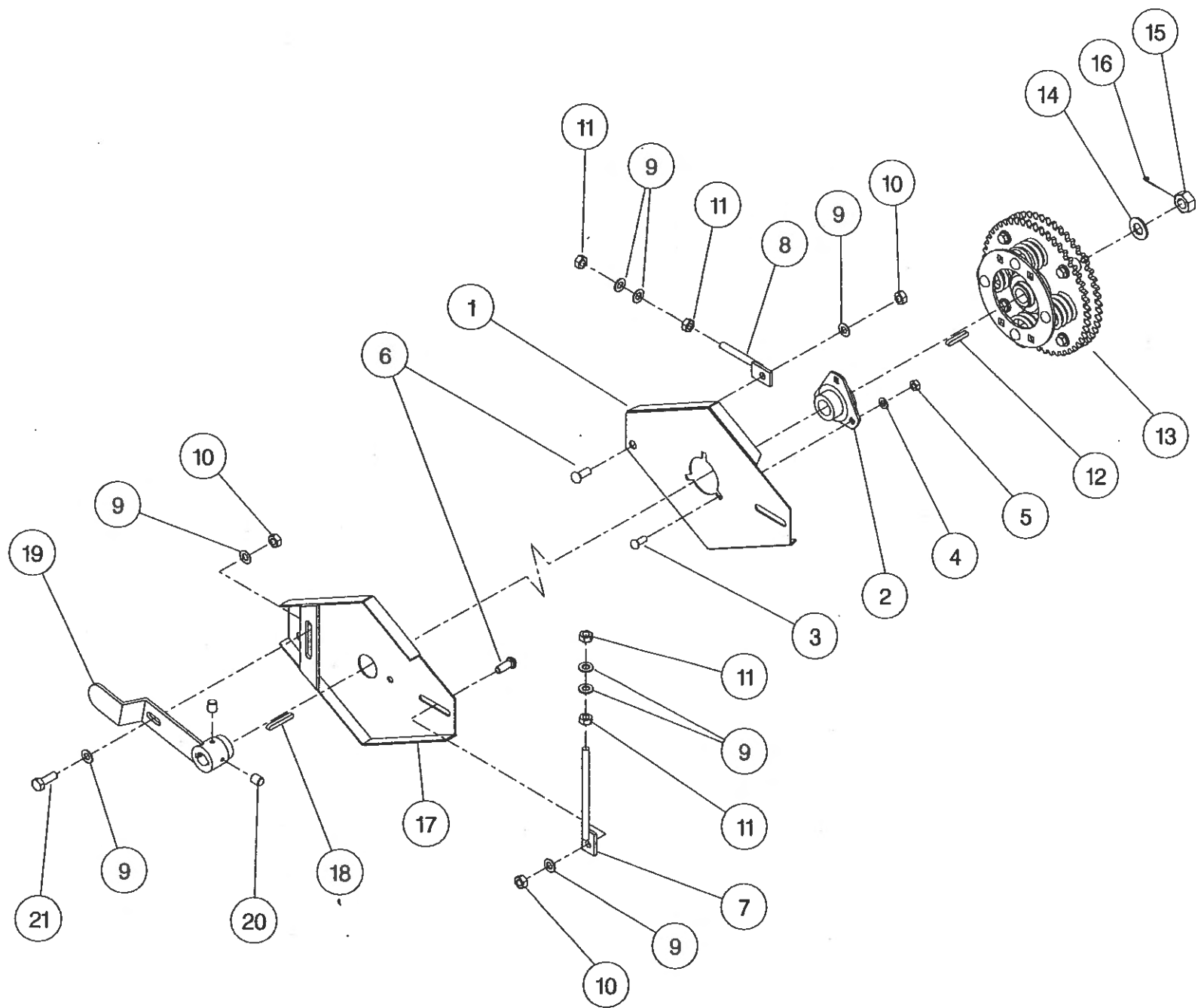
ASSY NUMBER: 196067 02				ASSY DESCRIPTION:		DRIVE PARTS SHAKERPAN STD	
ITEM	PART NO	DESCRIPTION	QTY	ITEM	PART NO	DESCRIPTION	QTY
1	191777 01	IDLER ADJ SCREW	1				
2	WSH-0018	WASHER	1				
3	191774 01	PLATE	1				
4	NUT-0269	NUT	1				
5	191040 01	SPACER	1				
6	131014 01	SPROCKET IDLER	1				
7	BRG-1995	BEARING	1				
8	CIR-0470	CIRCLIP	1				
9	190060 06	IDLER SPINDLE	1				
10	192258 01	PAN DRIVE SPROCKET 25T	1				
11							
12	K0807035	KEY	1				
13	CIR-1125	CIRCLIP	1				
14	BRG-1994	BEARING	2				
15	192263 01	PAN DRIVE SHAFT	1				
16	BSHZ02553	LOCKING BUSH	1				
17	192265 01	PITMAN	1				
18	BRG-22500	BEARING	2				
19	HSS-0086	SETSCREW	6				
20	WSH-0009	FLAT WASHER	6				
21	NUT-0260	NUT	6				
22	HSS-0318	SETSCREW	1				
23	WSH-0070	SPRING WASHER	1				
24	BLT-2316	BOLT	1				
25	WSH-0024	FLAT WASHER	1				
26	NUT-0271	NUT	1				
27	192344 01	SPACER	1				
28	CHN-01682	CHAIN + JOINER	1				
28a	CHN-01600	CHAIN JOINER LINK	1				



Shelbourne Reynolds Engineering Limited

ASSY NUMBER: 196102 05 ASSY DESCRIPTION: AUGER MOUNTING/DRIVE KIT (RX4.2) 1997

ITEM	PART NO	DESCRIPTION	QTY	ITEM	PART NO	DESCRIPTION	QTY
1	200035 03	SUPPORT PLATE L. H.	1				
2	BRG-0240	BEARING	1				
3	BLT-3745	COACH BOLT	3				
4	WSH-0015	PLAIN WASHER	3				
5	NUT-0265	NYLOC NUT	3				
6	BLT-3790	COACH BOLT	4				
7	192636 06	VERTICAL ADJUSTER	2				
8	192636 01	HORIZONTAL ADJUSTER	2				
9	WSH-0018	PLAIN WASHER	14				
10	NUT-0269	NYLOC NUT	5				
11	NUT-0170	PLAIN NUT	8				
12	K0807050	KEY	1				
13	KIT-00116	AUGER SLIP CLUTCH (SEE PARTS LIST KIT-00116)	1				
14	WSH-0030	PLAIN WASHER	1				
15	NUT-0580	CASTLE NUT	1				
16	PIN-1150	SPLIT PIN	1				
17	200038 01	SUPPORT PLATE R. H.	1				
18	K0807060	KEY	1				
19	200120 02	ADJUSTER ASSY	1				
20	SCW-4535	GRUB SCREW	2				
21	HSS-0241	SET SCREW	1				



Shelbourne Reynolds Engineering Limited

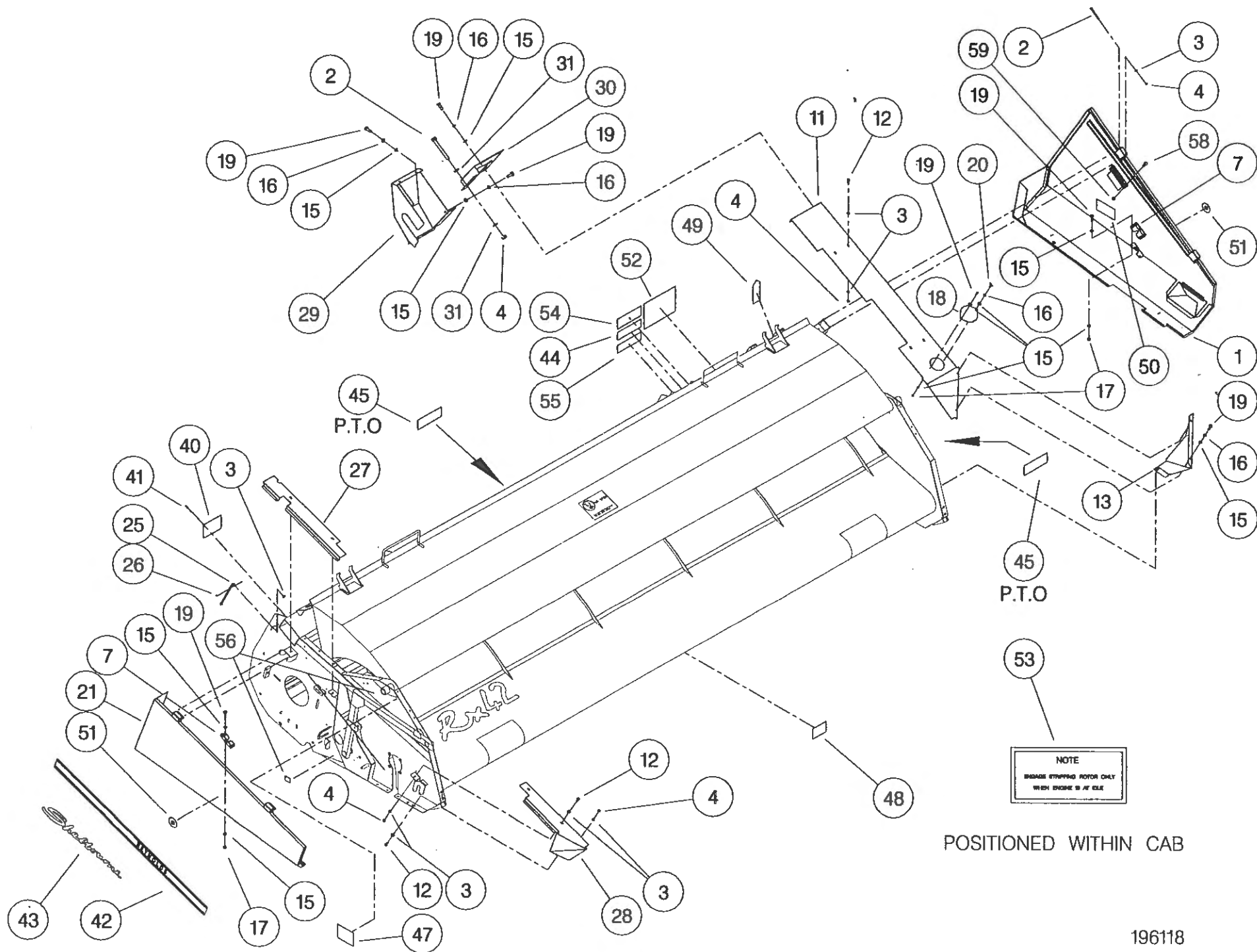
ASSY NUMBER: 196118 03

ASSY DESCRIPTION: RX EMBLEMS AND GUARDS SUB RX42 (1997)

ITEM	PART NO	DESCRIPTION	QTY	ITEM	PART NO	DESCRIPTION	QTY
1	193338 01	L. H. GUARD	1				
2	BLTA08470	BOLT	5				
3	WSH-0012	PLAIN WASHER	25				
4	NUT-0263	NYLOC NUT	15				
5							
6							
7	LTC-00040	SLAM LATCH	2				
8							
9							
10							
11	193297 01	L. H. TOP COVER	1				
12	HSS-0140	SET SCREW	10				
13	192570 01	FRONT DEFLECTOR L. H.	1				
14							
15	WSH-0009	PLAIN WASHER	14				
16	WSH-0056	SPRING WASHER	8				
17	NUT-0260	NYLOC NUT	5				
18	191355 01	COVER	1				
19	HSS-0084	SET SCREW	12				
20	SCW-4700	WING SCREW	1				
21	192940 01	R. H. GUARD	1				
22							
23							
24							
25	191370 01	GUARD STAY	1				
26	PIN-1088	SPLIT PIN	1				
27	192338 01	R. H. TOP COVER (REAR)	1				
28	192569 01	R. H. TOP COVER (FRONT)	1				
29	192555 01	REAR DRIVE GUARD	1				
30	193346 01	REAR UPPER GUARD	1				
31	WSH-1038	PENNY WASHER	2				
32							
33							
34							
35							
36							
37							
38							

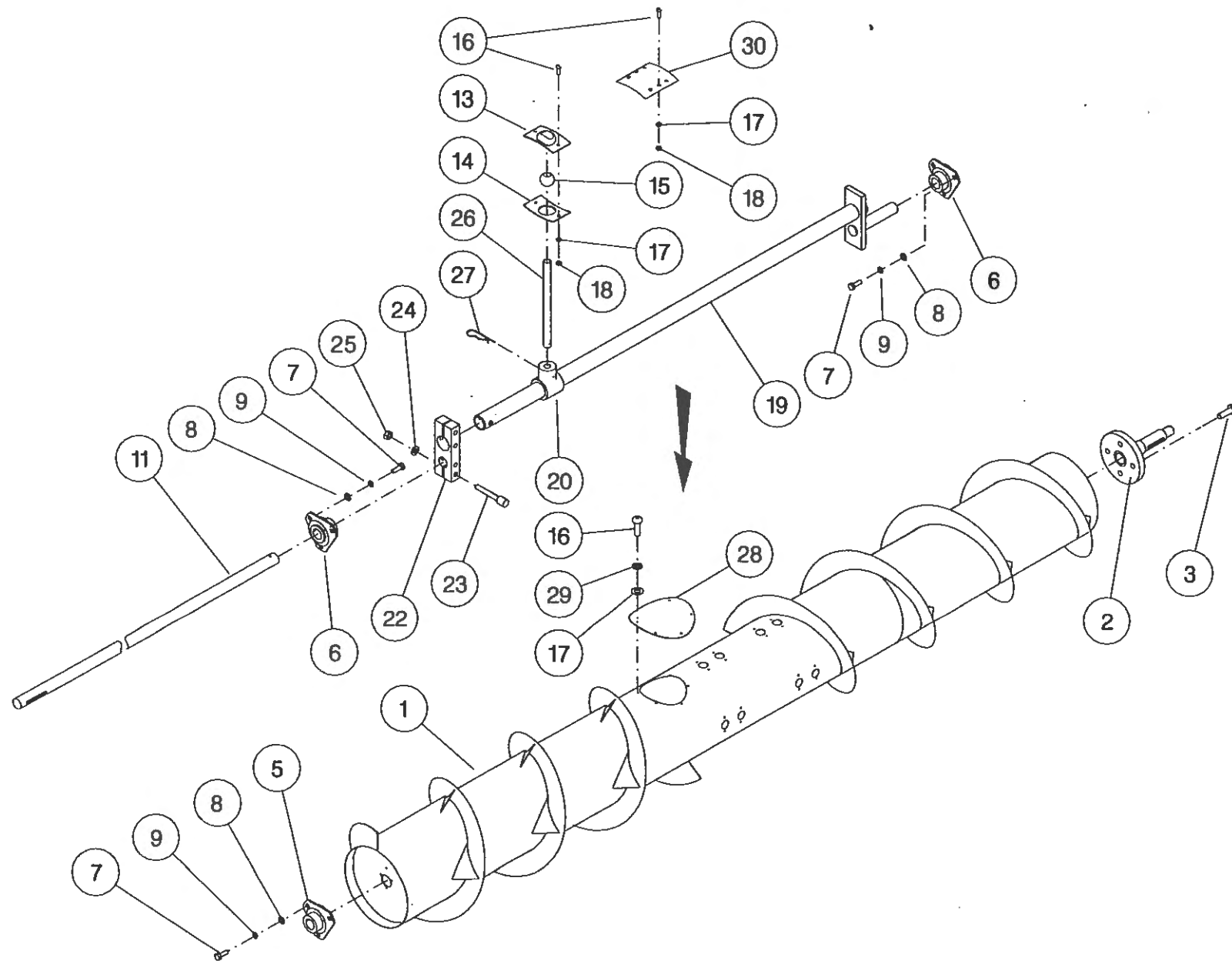
Shelbourne Reynolds Engineering Limited

ASSY NUMBER: 196118 03 CONTINUED				ASSY DESCRIPTION: RX EMBLEMS AND GUARDS SUB RX42 (1997)			
ITEM	PART NO	DESCRIPTION	QTY	ITEM	PART NO	DESCRIPTION	QTY
39							
40	191359 01	IDENTIFICATION PLATE	1				
41	POP-0006	POP RIVET	4				
42	191983 01	EMBLEM (STRIPES & REYNOLDS)	2				
43	191982 01	EMBLEM (SHELBOURNE)	2				
44	127075 10	EMBLEM (IMPORTANT)	1				
45	127075 12	EMBLEM (GREASE 10 HOURS)	2				
46							
47	190702 03	EMBLEM (DANGER, KEEP CLEAR)	2				
48	190702 02	EMBLEM (CAUTION, LOCK BOLTS)	4				
49	190702 04	EMBLEM (SLING POINT)	4				
50	191940 01	EMBLEM (SHEARBOLT PART No.)	1				
51	192953 01	EMBLEM (1/4 TURN)	2				
52	190849 01	EMBLEM (WARNING)	1				
53	190848 05	EMBLEM (CAB)	1				
54	192376 01	EMBLEM (PTO WARNING)	1				
55	193091 01	EMBLEM (AUGER MAX. SPEED)	1				
56	127075 16	EMBLEM (GREASE 50 HOURS)	6				
57							
58	BLTA07320	SHEARBOLT	10				
59	NUT-0162	NUT	10				



Shelbourne Reynolds Engineering Limited

ASSY NUMBER: 196125 07				ASSY DESCRIPTION: AUGER ASSY 4.2M (RET. FIN/LARGE DIA.)			
ITEM	PART NO	DESCRIPTION	QTY	ITEM	PART NO	DESCRIPTION	QTY
1	193320 01	AUGER W. ASSY.	1				
2	192011 01	AUGER DRIVE SHAFT	1				
3	HSSF12204	SET SCREW	4				
4							
5	BRG-0218	BEARING	1				
6	BRG-7080	BEARING	2				
7	HSS-0140	SET SCREW	9				
8	WSH-0012	PLAIN WASHER	9				
9	WSH-0058	SPRING WASHER	9				
10							
11	192223 04	AUGER SHAFT	1				
12							
13	AUG-01000	UPPER FINGER PL. (CONCAVE)	16				
14	AUG-01500	LOWER FINGER PL. (CONVEX)	16				
15	AUG-02000	FINGER GUIDE(BALL)	16				
16	SCW-4960	BUTT. HD. SKT. SCREW	44				
17	WSH-0009	PLAIN WASHER	44				
18	NUT-0260	NYLOC NUT	32				
19	192311 05	AUGER CRANK	1				
20	AUG-02500	FINGER HOLDER	16				
21							
22	192307 01	AUGER CLAMP	1				
23	SCCA10412	CAP HD SKT SCREW	4				
24	WSH-0015	PLAIN WASHER	4				
25	NUT-0265	NYLOC NUT	4				
26	192310 01	FINGER (16mm DIA.)	16				
27	AUG-03000	HAIRPIN COTTER	16				
28	193203 01	COVER PLATE	2				
29	WSH-0056	SPRING WASHER	12				
30	190735 01	BLANKING PLATE					



Shelbourne Reynolds Engineering Limited

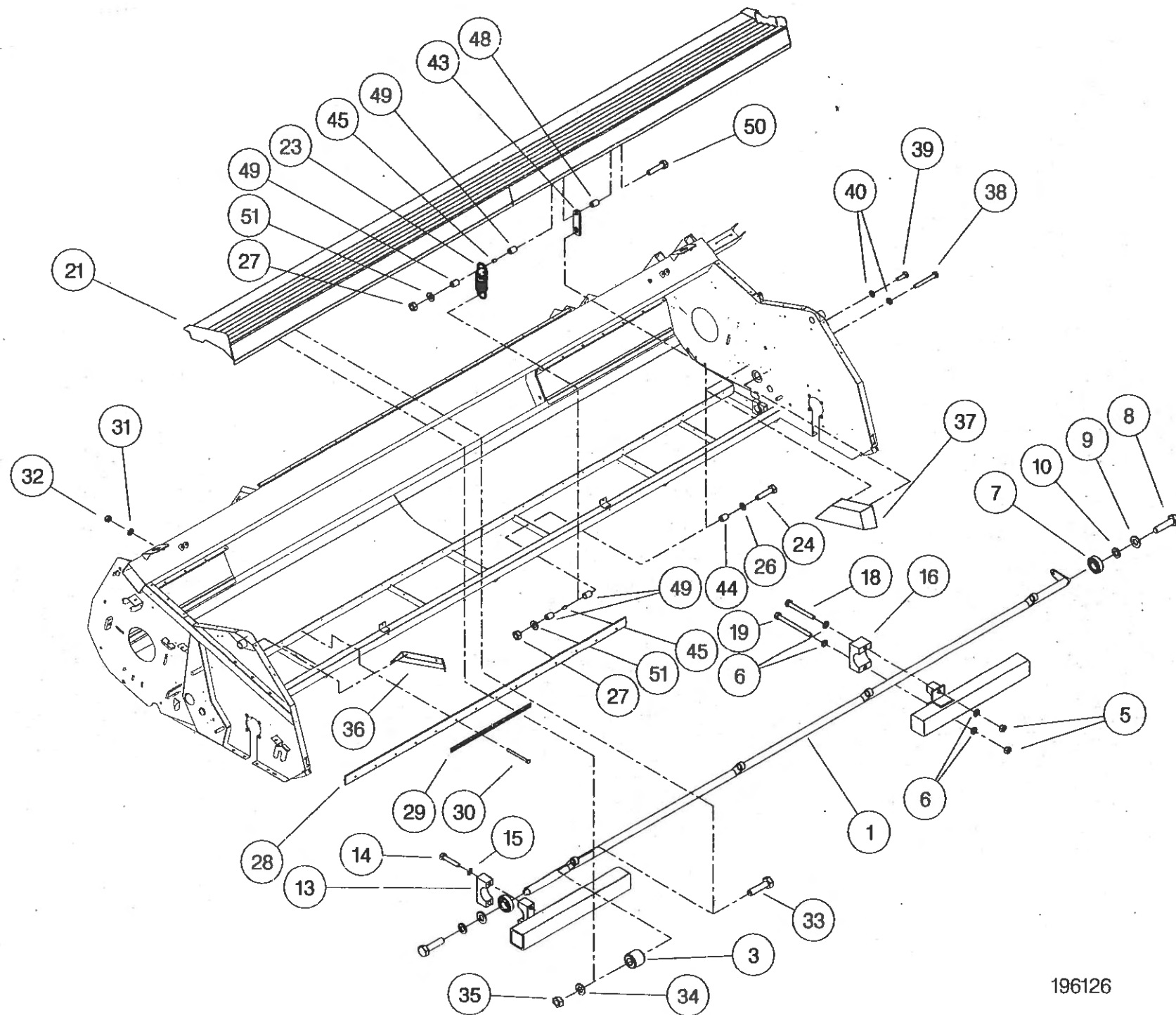
ASSY NUMBER: 196126 07

ASSY DESCRIPTION: SHAKER PAN SUB (RX42 - 1997)

ITEM	PART NO	DESCRIPTION	QTY	ITEM	PART NO	DESCRIPTION	QTY
1	193321 01	TORSION TUBE (4.2M)	1				
2							
3	BSH-1530	RUBBER BUSH INSERT	4				
4							
5	NUT-0265	NYLOC NUT	4				
6	WSH-0015	FLAT WASHER	8				
7	BRG-1995	BEARING	2				
8	HSS-0317	SET SCREW	2				
9	WSH-0070	SPRING WASHER	2				
10	WSH-0024	PLAIN WASHER	2				
11							
12							
13	192264 02	CLAMP BLOCK TOP	2				
14	BLTA10350	BOLT	4				
15	WSH-0061	SPRING WASHER	4				
16	192266 01	PIVOT BLOCK (PAIR)	2				
17							
18	BLTA10530	BOLT	2				
19	HSSA10680	SETSCREW	2				
20							
21	193322 01	SHAKER PAN ASSY (4.2M)	1				
22							
23	SPGA32221	SPRING	4				
24	BLTA08500	BOLT	4				
25							
26	WSH-0012	WASHER	4				
27	NUT-0263	NUT	8				
28	193324 01	SEAL STRIP	2				
29	192273 01	CLAMP STRIP	7				
30	BLTA06470	BOLT	28				
31	WSH-0009	FLAT WASHER	28				
32	NUT-0260	NYLOC NUT	28				
33	HSS-0265	SET SCREW	4				
34	WSH-0018	PLAIN WASHER	4				
35	NUT-0269	NYLOC NUT	4				
36	192355 01	END DEFLECTOR R. H.	1				
37	192354 01	END DEFLECTOR L. H.	1				

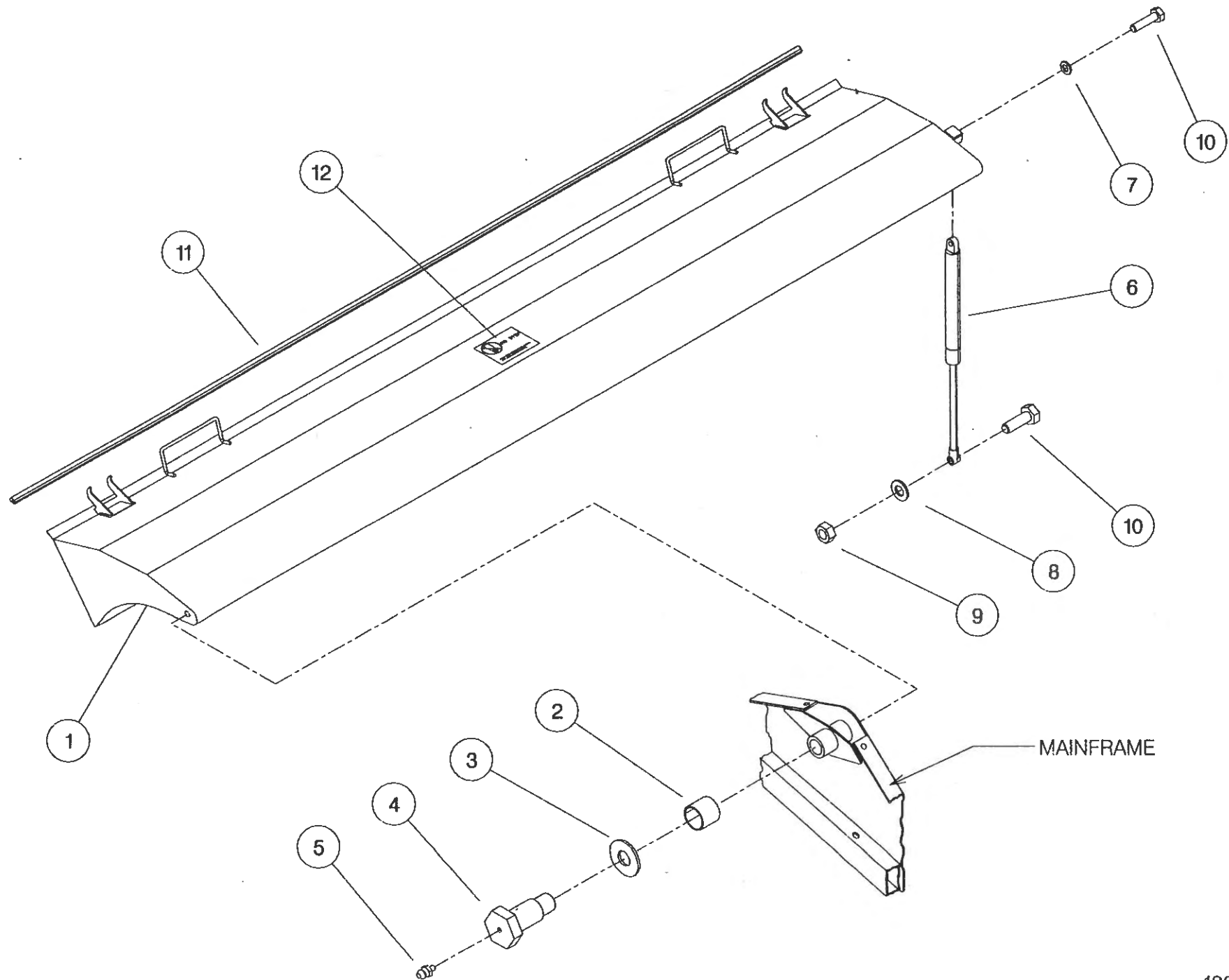
Shelbourne Reynolds Engineering Limited

ASSY NUMBER: 196126 07 CONTINUED				ASSY DESCRIPTION: SHAKER PAN SUB (RX42 - 1997)			
ITEM	PART NO	DESCRIPTION	QTY	ITEM	PART NO	DESCRIPTION	QTY
38	BLTA06320	BOLT	2				
39	HSS-0084	SET SCREW	2				
40	WSH-0056	SPRING WASHER	4				
41							
42							
43	192969 01	RETAINER	4				
44	192970 01	TUBE	4				
45	PSP-01201	PLASTIC SPACER	8				
46							
47							
48	192970 02	TUBE	4				
49	PSP-01800	PLASTIC SPACER	16				
50	BLTA08530	BOLT	4				
51	WSH-1038	PENNY WASHER	8				



Shelbourne Reynolds Engineering Limited

ASSY NUMBER: 196127 07				ASSY DESCRIPTION: TOP DOOR COWL ASSY (RX42) 1997			
ITEM	PART NO	DESCRIPTION	QTY	ITEM	PART NO	DESCRIPTION	QTY
1	193323 01	COWL ASSY (RX42)	1				
2	BSH-3030	BUSH	2				
3	192813 01	LARGE WASHER	2				
4	192812 01	COWL PIN	2				
5	NIP-0001	GREASE ZERK	2				
6	GSTA14407	GAS STRUTT	1				
7	WSH-0061	WASHER	1				
8	WSH-0015	WASHER	1				
9	NUT-0265	NUT	1				
10	BLTA10290	BOLT	2				
11	EDS-11600	SEAL STRIP	4. 2m				
12	192718 01	TRANSFER (NO STEP)	1				

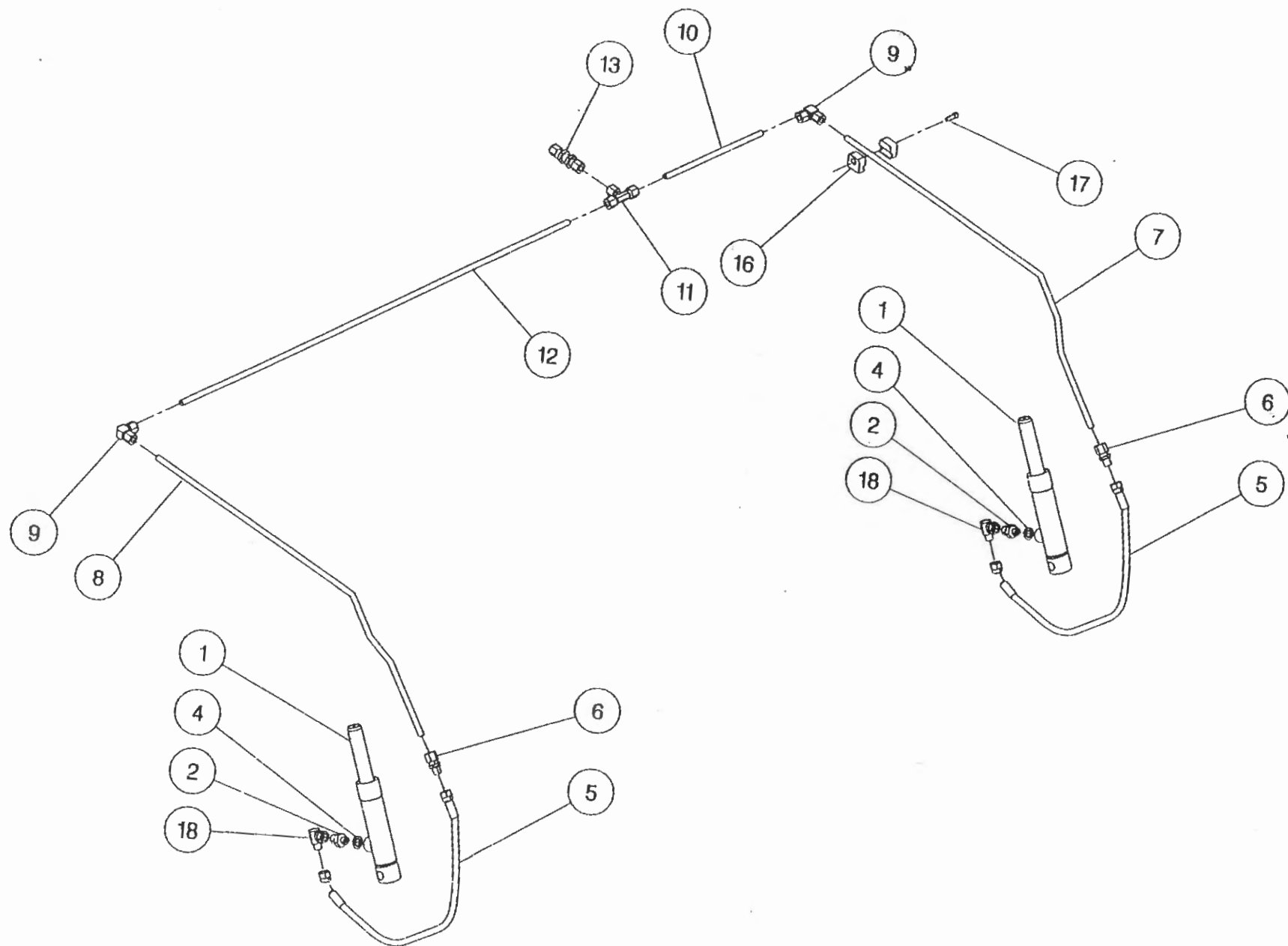


Shelbourne Reynolds Engineering Limited

ASSY NUMBER: 196128 07

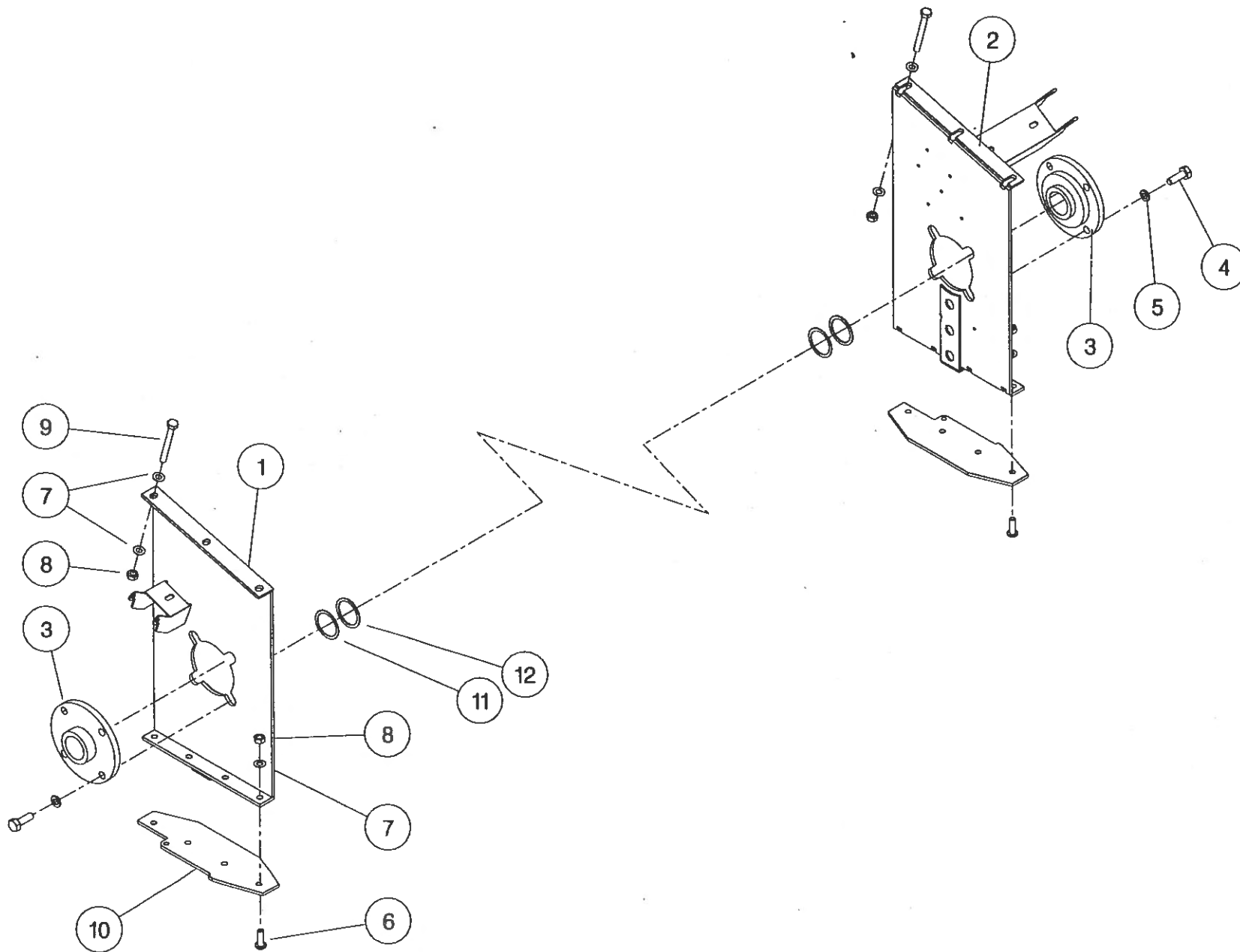
ASSY DESCRIPTION: HYDRAULIC CIRCUIT SUB 4.2M

ITEM	PART NO	DESCRIPTION	QTY	ITEM	PART NO	DESCRIPTION	QTY
1	REF	HYDRAULIC RAM	2				
2	190859 01	HYDRAULIC FITTING	2				
3							
4	WSH-1010	DOWTY WASHER	2				
5	HHDC03805	HOSE	2				
6	FIT-0047	HYDRAULIC FITTING	2				
7	192361 01	SIDE PIPE LH	1				
8	192361 02	SIDE PIPE RH	1				
9	FIT-0214	HYD FITTING	2				
10	RP-100878	STEEL PIPE	1				
11	FIT-0212	HYD FITTING	1				
12	RP-103378	STEEL PIPE	1				
13	FIT-0213	HYD FITTING	1				
14							
15							
16	FIT-1000	PETA CLAMPS	4				
17	SCW-0089	CAP HEAD SCREW	4				
18	HALAA0303	HYD FITTING	2				



Shelbourne Reynolds Engineering Limited

ASSY NUMBER: 196130 01				ASSY DESCRIPTION: RX ROTOR MTG SUB			
ITEM	PART NO	DESCRIPTION	QTY	ITEM	PART NO	DESCRIPTION	QTY
1	192268 02	ROTOR MTG PLATE R. H	1				
2	193295 01	ROTOR MTG PLATE L. H	1				
3	BRG-3275	BEARING	2				
4	HSS-0238	SETSCREW	8				
5	WSH-0065	WASHER	8				
6	SCW-0515	SCREW	8				
7	WSH-0015	WASHER	20				
8	NUT-0265	NUT	14				
9	BLTA10520	BOLT	6				
10	193220 01	DIVIDING PLATE	2				
11	192876 01	SHIM (1mm THICK)					
12	192876 02	SHIM (2mm THICK)					



Shelbourne Reynolds Engineering Limited

ASSY NUMBER: 196131 07

ASSY DESCRIPTION: FRAME & PARTS SUB (RX42-1997)

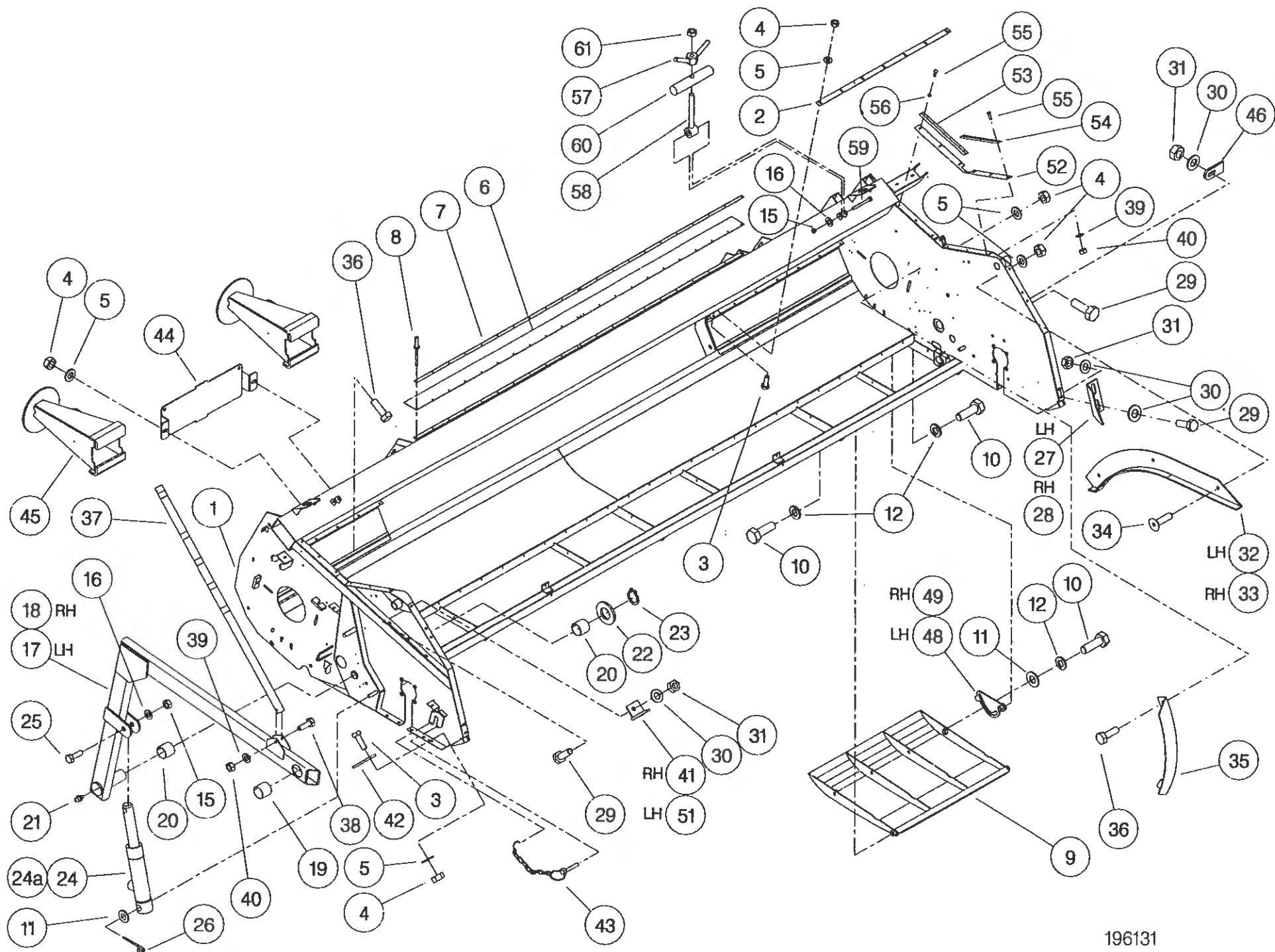
ITEM	PART NO	DESCRIPTION	QTY	ITEM	PART NO	DESCRIPTION	QTY
1	193343 01	RX42 MAIN FRAME ASSY	1				
2	193344 02	STRIPPER PLATE	2				
3	BLT-4710	COACH BOLT	16				
4	NUT-0263	NUT	28				
5	WSH-0012	WASHER	28				
6	191340 01	RUBBER SEAL	1				
7	191339 01	CLAMP STRIP	2				
8	POP-0006	POP RIVET	22				
9	193219 01	SKID	2				
10	HSS-0316	SET SCREW	12				
11	WSH-0024	WASHER	6				
12	WSH-0070	WASHER	12				
13							
14							
15	NUT-0269	NUT	4				
16	WSH-0018	WASHER	4				
17	191259 02	ADJ COWL SUPPORT ARM R. H	1				
18	191259 01	ADJ COWL SUPPORT ARM L. H	1				
19	BSH-3030	BUSH	2				
20	BSH-3070	BUSH	4				
21	NIP-0001	GREASE ZERK	2				
22	WSH-1547	WASHER	2				
23	CIR-1150	CIRCLIP	2				
24	192960 01	HYDRAULIC RAM	2				
24a	RMSK00010	SEAL KIT					
25	HSS-0260	SET SCREW	2				
26	PIN-1150	SPLIT PIN	2				
27	192193 01	ADJ COWL STOP L. H	1				
28	192193 02	ADJ COWL STOP R. H	1				
29	HSS-0194	SET SCREW	7				
30	WSH-0015	WASHER	11				
31	NUT-0265	NUT	7				
32	192055 01	RUNNER ASSY L. H	1				
33	192055 02	RUNNER ASSY R. H	1				
34	SCW-1735	SCREW	6				
35	192304 01	AUGER END DEFLECTOR	2				
36	HSS-0140	SET SCREW	6				
37	192494 01	INDICATOR ROD	1				

Shelbourne Reynolds Engineering Limited

ASSY NUMBER: 196131 07 CONTINUED

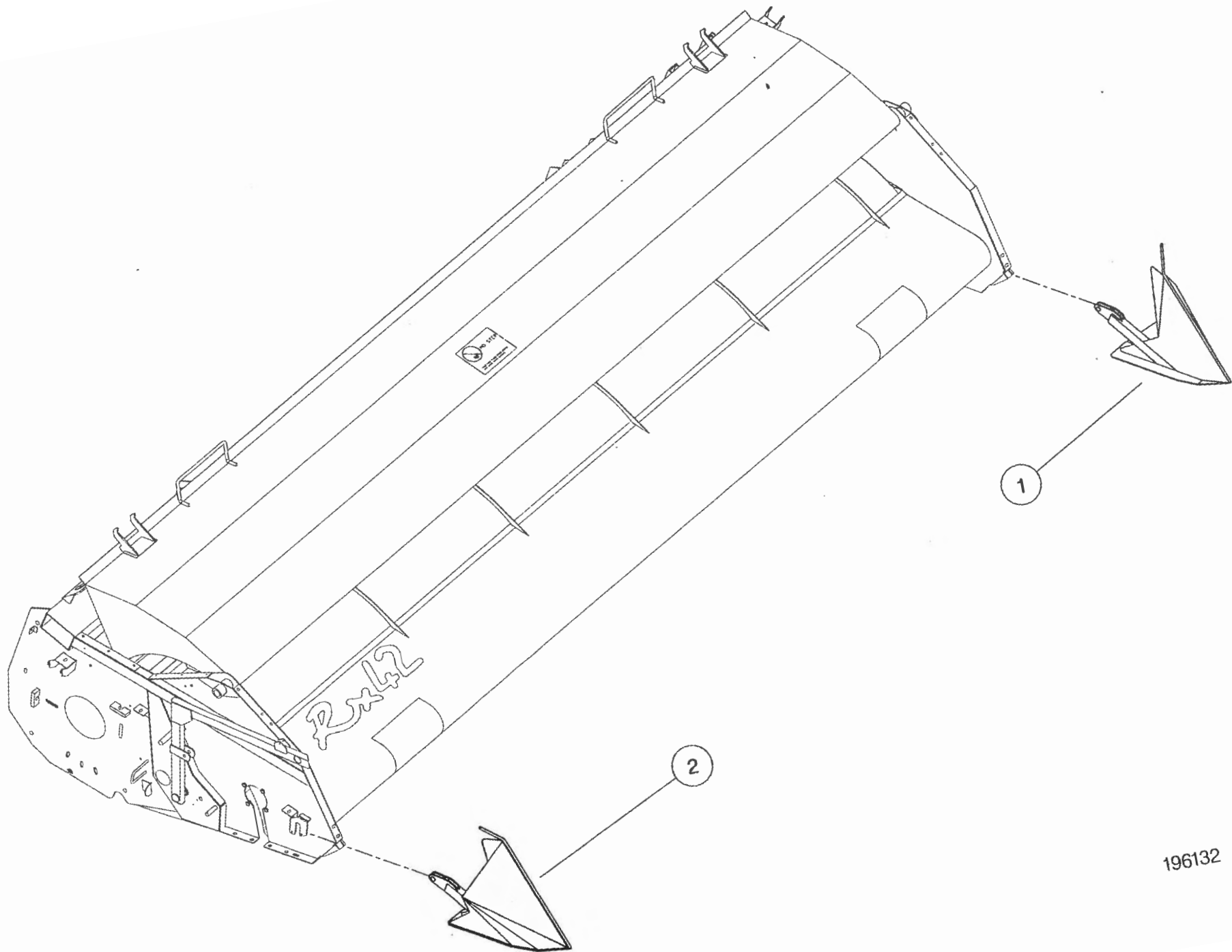
ASSY DESCRIPTION: FRAME & PARTS SUB (RX42-1997)

ITEM	PART NO	DESCRIPTION	QTY	ITEM	PART NO	DESCRIPTION	QTY
38	HSS-0092	SETSCREW	1				
39	WSH-0009	PLAIN WASHER	7				
40	NUT-0260	NYLOC NUT	7				
41	192484 01	SUPPORT BRACKET RH	1				
42	192543 01	CROP DIVIDER ADJ. PLATE	2				
43	PIN-01790	LYNCH PIN & CHAIN	2				
44	193221 01	HEADER STAND BRACKET	1				
45	193222 01	HEADER FRONT STAND	2				
46	192550 01	NOSE ARM STOP PLATE	1				
47							
48	192954 01	SKID ADJUSTER PLATE L. H	2				
49	192954 02	SKID ADJUSTER PLATE R. H	2				
50							
51	192484 02	SUPPORT BRACKET LH	1				
52	193231 01	RUBBER SEAL	2				
53	193229 01	SEAL CLAMP	2				
54	193230 01	SEAL CLAMP	2				
55	SCW-4960	BUTT. HD. SKT SCREW	12				
56	WSH-0056	SPRING WASHER	6				
57	193244 01	RETAINING NUT	2				
58	193248 01	RETAINING SCREW	2				
59	BLTA12380	BOLT	2				
60	193251 01	RETAINING BAR	2				
61	NUT-0170	PLAIN NUT	2				



32

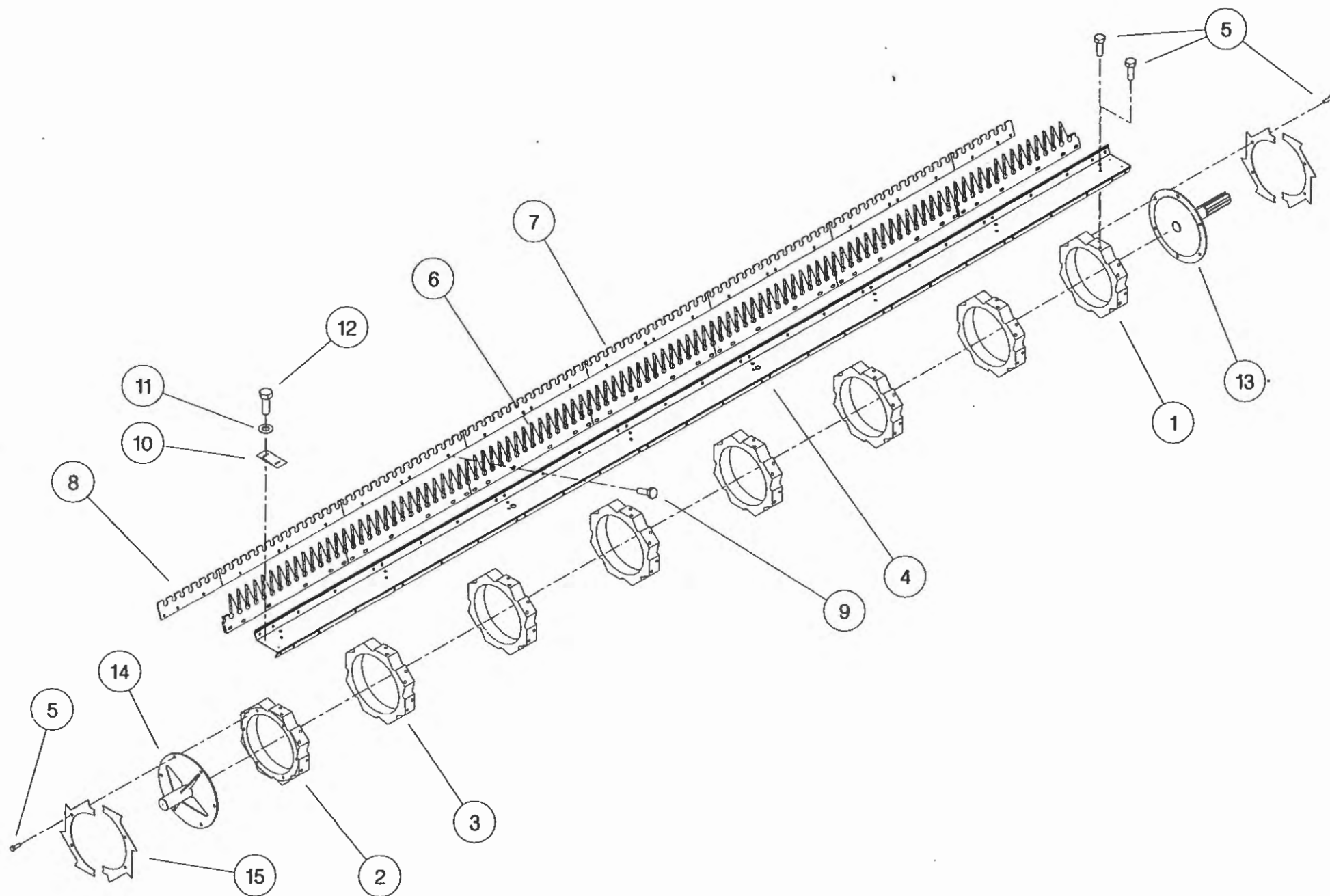
ASSY NUMBER: 196132 01				ASSY DESCRIPTION: SHORT DIVIDERS SUB (RX & CX)			
ITEM	PART NO	DESCRIPTION	QTY	ITEM	PART NO	DESCRIPTION	QTY
1	193348 01	SHORT DIVIDER LH	1				
2	193348 02	SHORT DIVIDER RH	1				



196132

Shelbourne Reynolds Engineering Limited

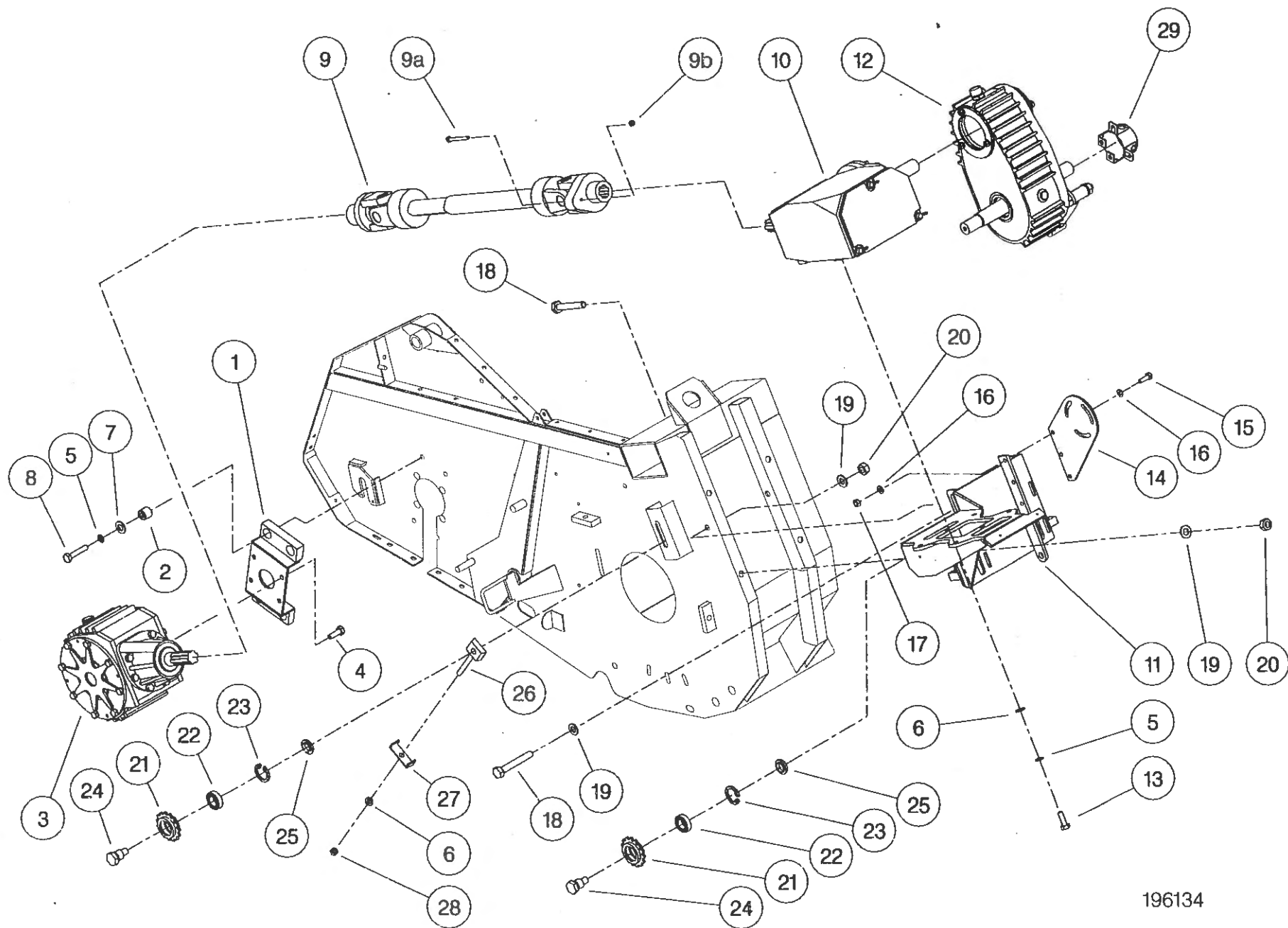
ASSY NUMBER:		ASSY DESCRIPTION: STRIPPING ROTOR ASSY 4.2m					
ITEM	PART NO	DESCRIPTION	QTY	ITEM	PART NO	DESCRIPTION	QTY
1	192892 01	OUTER HUB CASTING L. H.	1				
2	192892 02	OUTER HUB CASTING R. H.	1				
3	192892 03	INNER HUB CASTING	6				
4	192890 04	ROTOR SECTION 4.2M	8				
5	HSSG10204	SET SCREW	140				
6	191968 02	ELITE ELEMENT	56				
OR	193087 01	ELITE ELEMENT(SLOTTED)	56				
7	192291 01	ANTI WEAR STRIP CTR.	48				
OR	192291 07	S-TYPE STRIP CTR	48				
8	192291 02	ANTI WEAR STRIP END	16				
OR	192291 08	S-TYPE STRIP END	16				
9	HSSF08204	SET SCREW	240				
10	192679 01	ANTI WRAP PLATE	16				
11	WSH-1034	PENNY WASHER	32				
12	SCW-5180	SELF TAP. SCREW	32				
13	192897 01	DRIVE SHAFT W/ASSY	1				
14	192899 01	IDLE SHAFT W/ASSY	1				
15	192959 01	OUTER CLAMP RING (HALF)	4				



Shelbourne Reynolds Engineering Limited

ASSY NUMBER: 196134 01 ASSY DESCRIPTION: ROTOR/AUGER DRIVE 1997 (4.2M)

ITEM	PART NO	DESCRIPTION	QTY	ITEM	PART NO	DESCRIPTION	QTY
1	191652 01	GEARBOX BRACKET	1				
2	BSH-1530	BUSH	4				
3	GEA-0095	BEVEL GEARBOX (SEE PARTS LIST GEA-0095)	1				
4	HSSG12174	SET SCREW	4				
5	WSH-0065	SPRING WASHER	10				
6	WSH-0018	PLAIN WASHER	7				
7	190119 04	PLAIN WASHER	4				
8	BLTA12290	BOLT	4				
9	PTO-09011	POWER SHAFT	1				
9a	BLTA07320	SHEAR BOLT					
9b	NUT-0162	NUT					
10	GEA-0135	FIVE SPEED GEARBOX ASSY (SEE PARTS LIST GEA-0135)	1				
11	192091 01	GEARBOX BRACKET (ALUM. /FINS)	1				
12	GEA-0101	DROPBOX ASSY (SEE PARTS LIST GEA-0101)	1				
13	HSS-0238	SET SCREW	6				
14	191680 01	DROP BOX SUPPORT PLATE	1				
15	HSS-0194	SET SCREW	3				
16	WSH-0015	PLAIN WASHER	6				
17	NUT-0265	NYLOC NUT	3				
18	HSS-0330	SETSCREW	4				
19	WSH-0024	PLAIN WASHER	6				
20	NUT-0271	NYLOC NUT	4				
21	131014 01	SPROCKET IDLER	2				
22	BRG-1995	BEARING	2				
23	CIR-0470	CIRCLIP	2				
24	190060 06	IDLER SPINDLE	2				
25	191040 01	IDLER SPACER	2				
26	191777 01	IDLER ADJ SCREW	1				
27	191774 01	PLATE	1				
28	NUT-0269	NUT	1				
29	KIT-00525	PTO GUARD KIT	1				



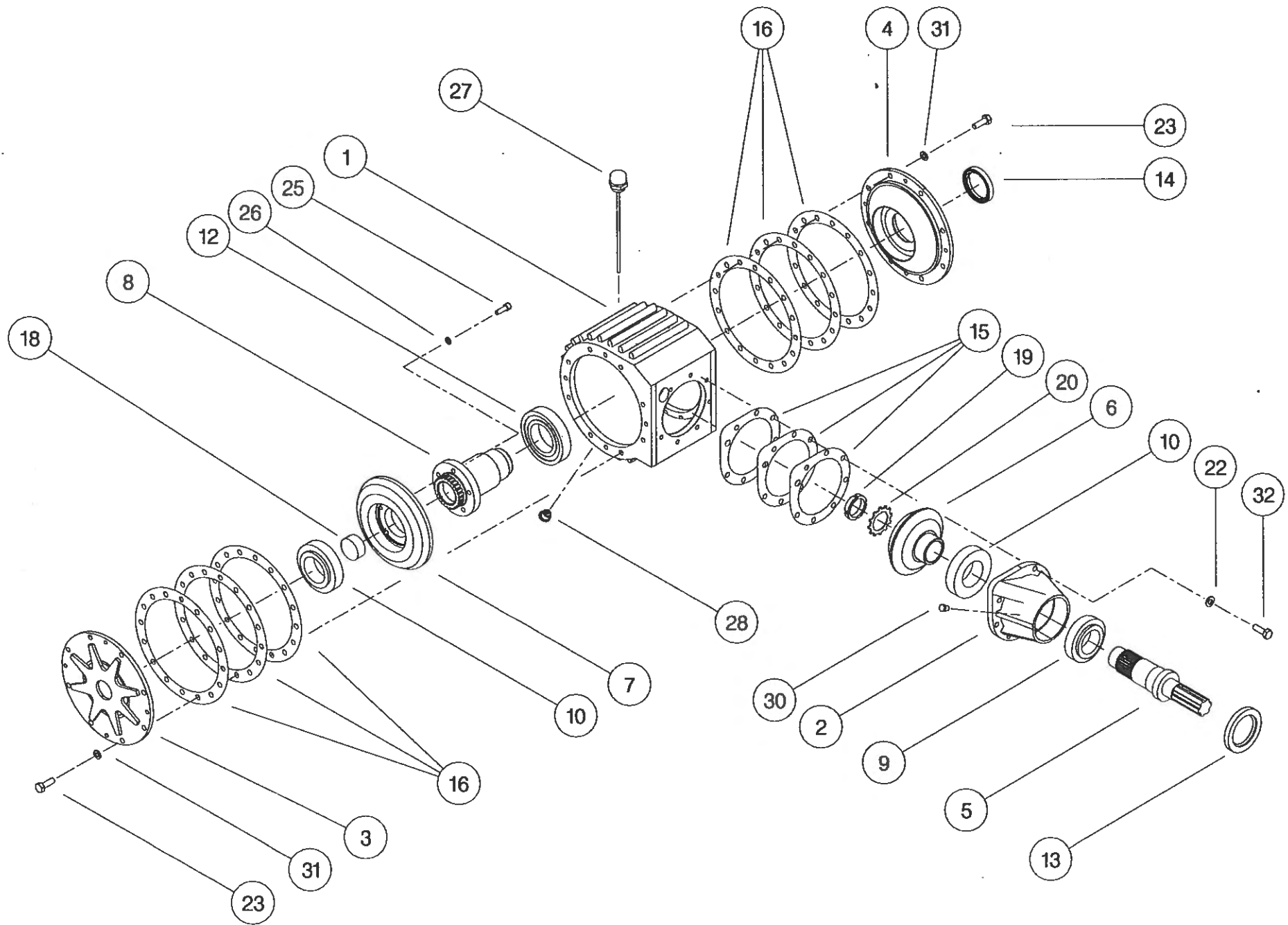
Shelbourne Reynolds Engineering Limited

ASSY NUMBER:

GEA-0095

ASSY DESCRIPTION: BEVEL GEARBOX (1. 5: 1)

ITEM	PART NO	DESCRIPTION	QTY	ITEM	PART NO	DESCRIPTION	QTY
1	191715 01	GEARBOX CASING	1				
2	191716 01	INPUT HOUSING	1				
3	191717 01	OUTSIDE END COVER	1				
4	191718 01	INSIDE END COVER	1				
5	191819 01	INPUT SHAFT (28T INVOLUTE)	1				
6	191798 01	BEVEL GEAR 20T (28T INV)	1				
7	191799 01	BEVEL GEAR 30T (25T INV)	1				
8	191800 01	OUTPUT SHAFT (25T INVOLUTE)	1				
9	BRG-7000	BEARING	1				
10	BRG-7020	BEARING	2				
11							
12	BRG-7040	BEARING	1				
13	SEA-0590	ROTARY SHAFT SEAL	1				
14	SEA-0600	ROTARY SHAFT SEAL	1				
15	191812	SHIM PACK (INPUT)	1				
16	191813	SHIM PACK (ENDS)	2				
17							
18	191735 01	SHAFT PLUG	1				
19	NUT-3010	LOCK RING	1				
20	WSH-6010	LOCK WASHER	1				
21							
22	WSH-1301	SHAKEPROOF WASHER	7				
23	HSS-0191	SET SCREW	16				
24							
25	SCW-0139	CAP HEAD SCREW	5				
26	WSH-0058	SPRING WASHER	5				
27	FIT-0254	BREATHER/DIP STICK	1				
28	FIT-0253	MAGNETIC DRAIN PLUG	1				
29							
30	FIT-0223	TAPER PLUG	1				
31	WSH-0061	SPRING WASHER	16				
32	SCW-0190	CAP SOC. HEAD SCREW	7				

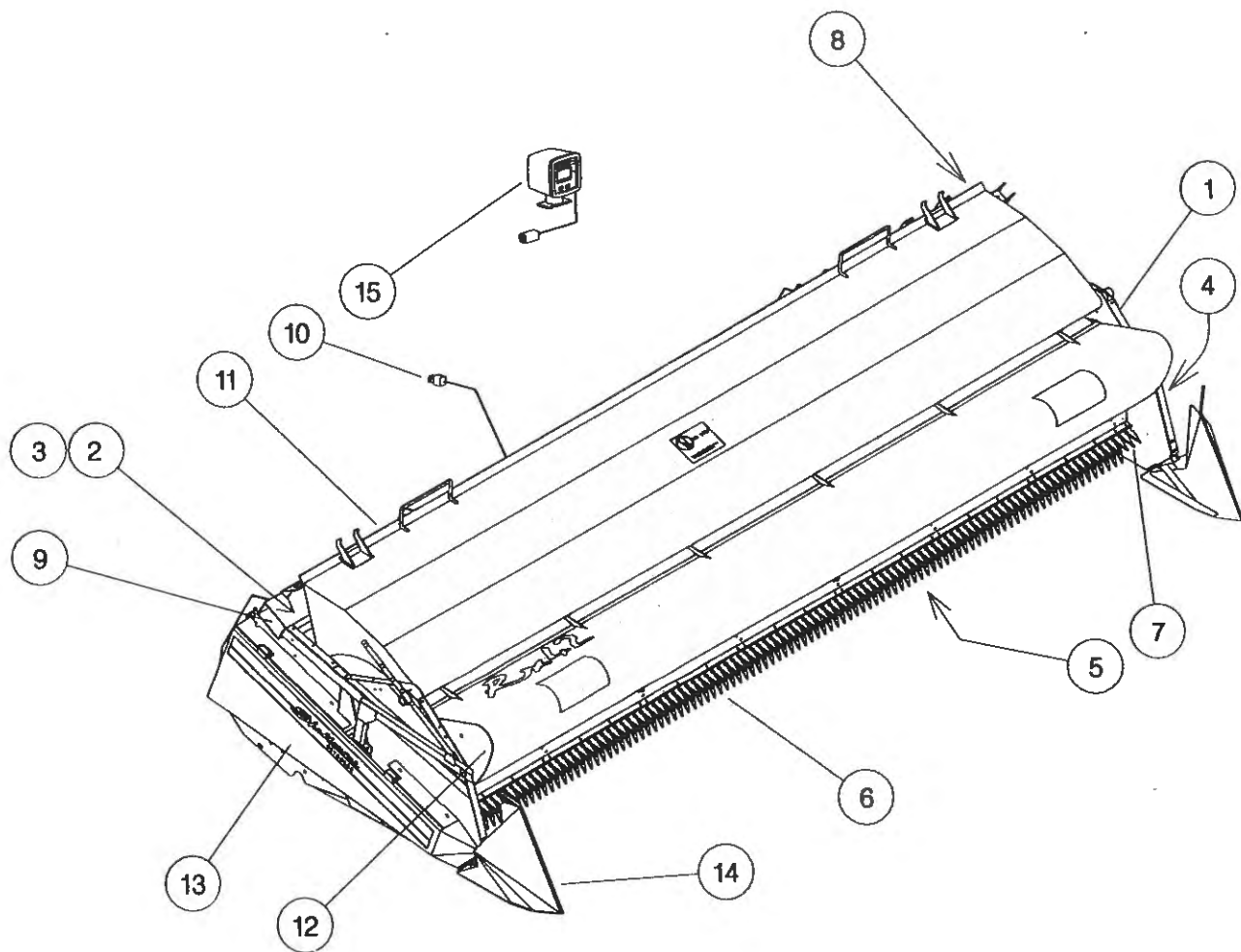


Shelbourne Reynolds Engineering Limited

ASSY NUMBER: GEA-0101				ASSY DESCRIPTION: SHORT DROPBOX FOR RX & CX (1996)			
ITEM	PART NO	DESCRIPTION	QTY	ITEM	PART NO	DESCRIPTION	QTY
1	191723 01	GEARCASE	1				
2	191723 02	LID	1				
3	191696 01	OUTPUT END CAP	1				
4	191694 01	INPUT FLANGE	1				
5	191693 01	END CAP	1				
6	191807 01	INPUT/AUGER OUTPUT SHAFT (28T INVOLUTE)	1				
7	191801 01	INTERMED. SHAFT (28T INV)	1				
8	*	CHANGE GEAR (SEE DRIVE SUB)					
9	*	CHANGE GEAR (SEE DRIVE SUB)					
10	191803 01	SPUR GEAR 30T (28T INV)	1				
11	191884 01	SPUR GEAR 20T (28T INV)	1				
12	NUT-3000	LOCK RING	1				
13	WSH-6000	LOCK WASHER	1				
14	191725 01	SPACER	1				
15	191894 01	SPACER	1				
16	BRG-6600	BEARING	1				
17	BRG-5800	BEARING	4				
18	SEA-0610	ROTARY SHAFT SEAL	2				
19	191756 01	GASKET	1				
20	191757	SEAL PACK	2				
21	191758	SEAL PACK	1				
22	FIT-0255	BREATHER	1				
23	FIT-0253	MAGNETIC DRAIN PLUG	1				
24	FIT-0251	LEVEL PLUG	1				
25	SCW-0196	CAP HEAD SCREW	12				
26	WSH-1301	SHAKEPROOF WASHER	15				
27	HSS-0202	SETSCREW	6				
28							
29	BLTA10290	BOLT	3				
30	SCW-0190	CAP HEAD SCREW	3				
31	WSH-0015	PLAIN WASHER	3				
32	HSS-0145	SET SCREW	6				
33	WSH-1300	SHAKEPROOF WASHER	6				
34							
35	WSH-0061	SPRING WASHER	9				
36	WSH-1010	DOWTY WASHER	1				
37	191737 01	STUD	3				

Shelbourne Reynolds Engineering Limited

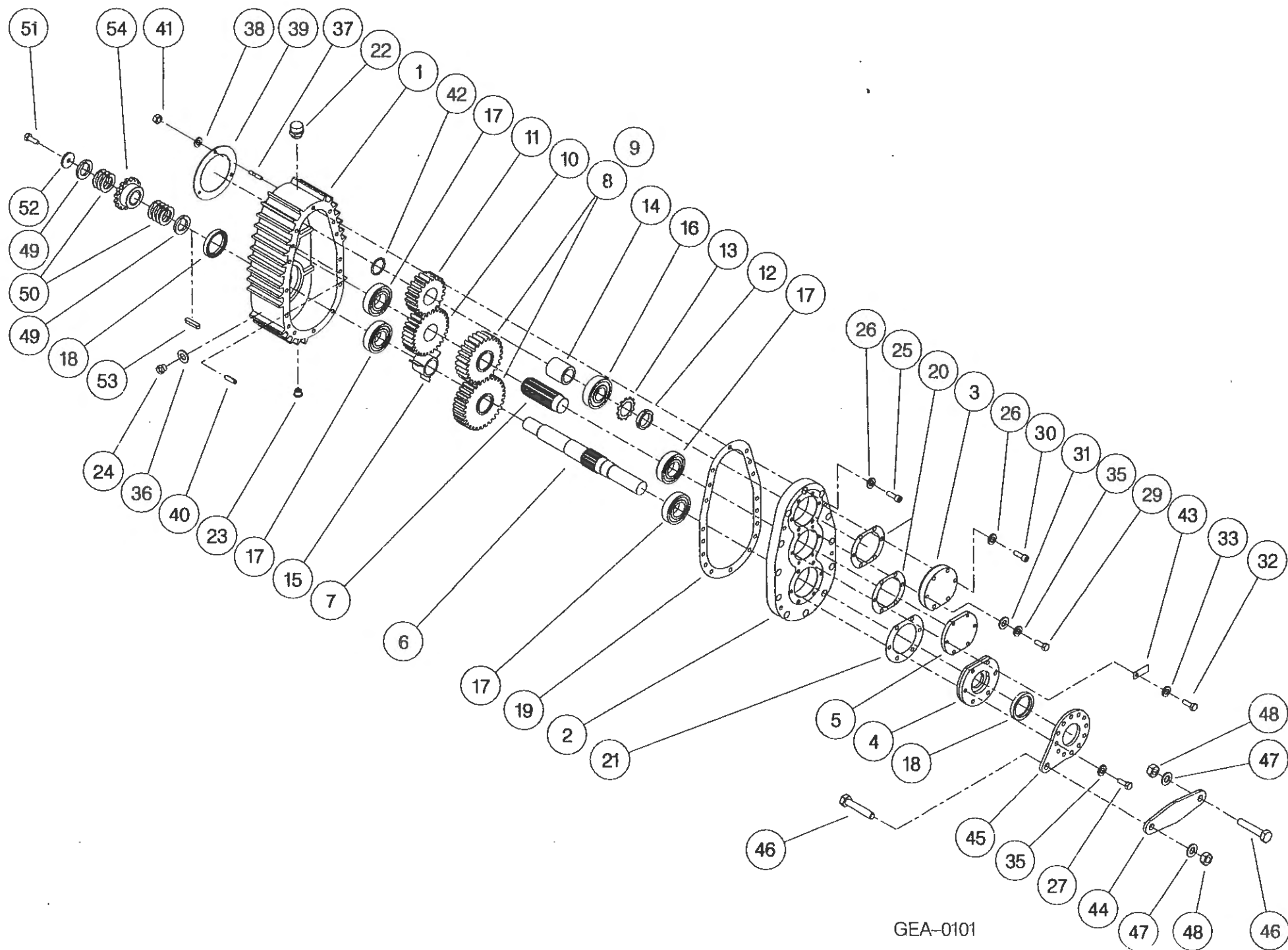
ASSY NUMBER:		GEA-0101 CONTINUED		ASSY DESCRIPTION: SHORT DROPBOX FOR RX & CX (1996)			
ITEM	PART NO	DESCRIPTION	QTY	ITEM	PART NO	DESCRIPTION	QTY
38	WSH-0012	PLAIN WASHER	3				
39	191759 01	SEAL	1				
40	191765 01	DOWL	2				
41	NUT-0263	NYLOC NUT	3				
42	CIR-4000	SNAP RING CIRCLIP	1				
43	191928 01	IDENTIFICATION TAG	1				
44	193097 01	FIXED LINK	1				
45	191687 01	LINK BRACKET	1				
46	HSS-0316	SET SCREW	2				
47	WSH-0024	WASHER	2				
48	NUT-0271	NUT	2				
49	191692 01	SPACER	2				
50	191692 02	SHIM	7				
51	HSSF10174	SET SCREW	1				
52	190548 01	PLAIN WASHER	1				
53	K1008045	KEY	1				
54	*	AUGER SPROCKET(SEE DRIVE SUB)					



Shelbourne Reynolds Engineering Limited

ASSY NUMBER: 196053 07 ASSY DESCRIPTION: ADJ. CROP DEFLECTOR SUB ASSY (RX42)

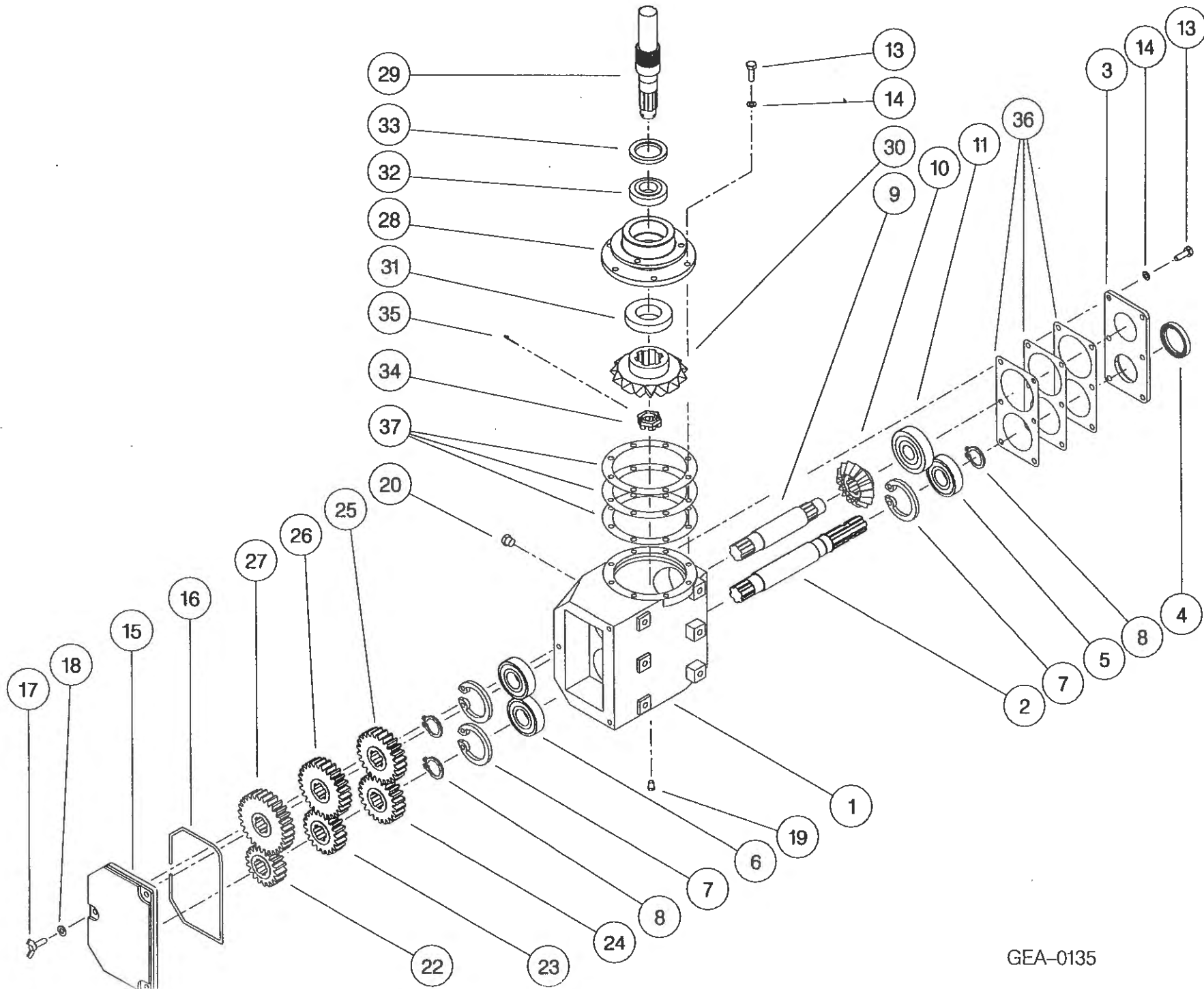
ITEM	PART NO	DESCRIPTION	QTY	ITEM	PART NO	DESCRIPTION	QTY
1	193325 01	ADJ. CROP DEFLECTOR (4.2M)	1				
2	190361 01	PIVOT BUSH	2				
3	192037 01	RUBBER SEAL	2				
4	192038 01	CLAMP STRIP	2				
5	POP-0006	POP RIVET	10				
6	191642 01	ROLLER	2				
7	191981 01	EMBLEM (SHEL. REYNOLDS)	1				
8	192524 10	EMBLEM (RX42)	1				
9	192718 01	TRANSFER (NO STEP)	1				
10	190119 05	PLAIN WASHER	2				
11	WSH-0058	WASHER	2				
12	HSS-0140	SETSCREW	2				



Shelbourne Reynolds Engineering Limited

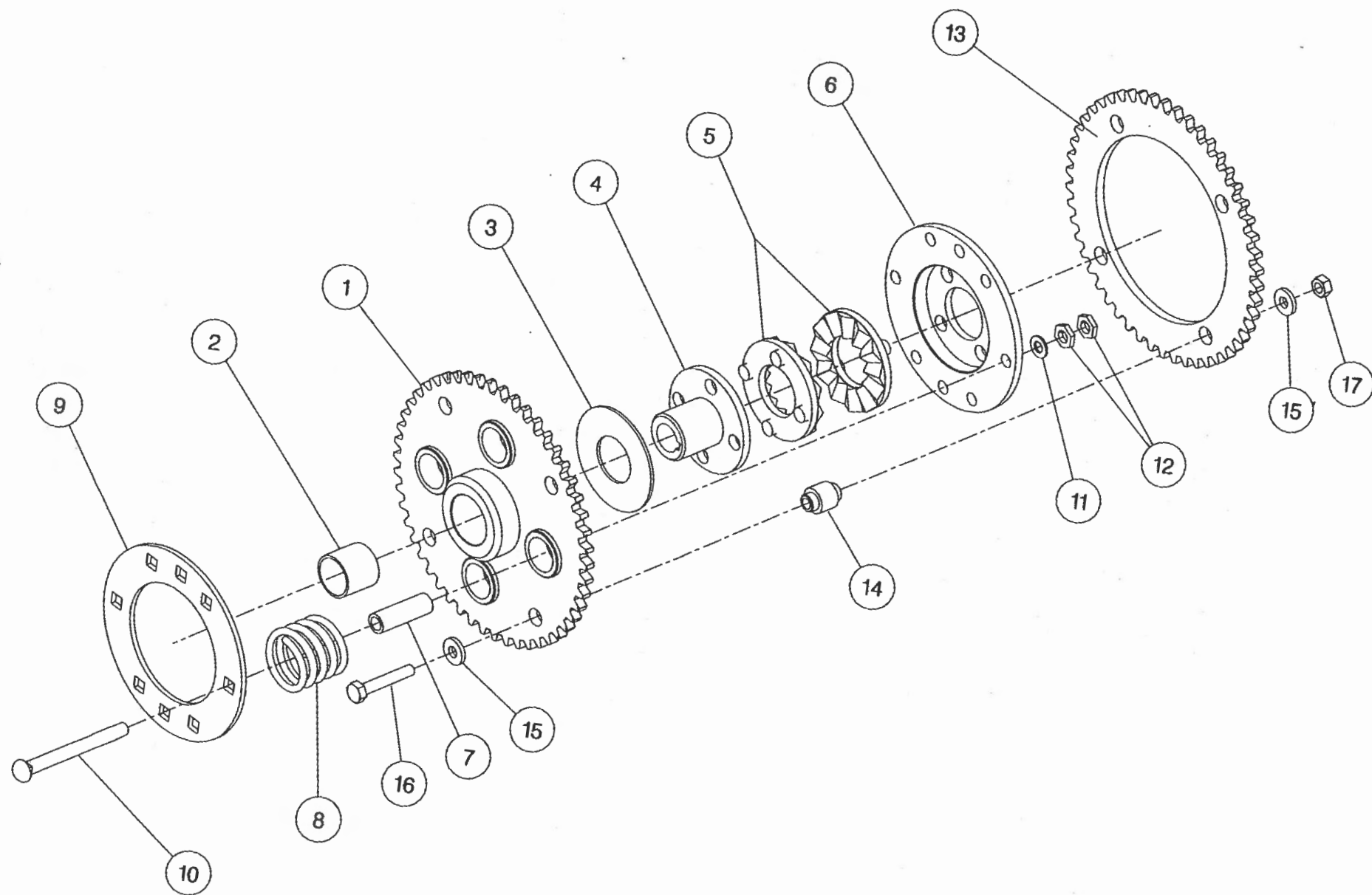
ASSY NUMBER: GEA-0135 ASSY DESCRIPTION: 5 SPEED G. BOX ASSY ALUM/FINNED 1997 (WITH DROP BOX)

ITEM	PART NO	DESCRIPTION	QTY	ITEM	PART NO	DESCRIPTION	QTY
1	191821 01	GEARBOX CASING	1				
2	191829 01	INPUT SHAFT	1				
3	191825 01	SEAL HOUSING	1				
4	SEA-0550	ROTARY SHAFT SEAL	1				
5	BRG-6600	BEARING	1				
6	BRG-6601	BEARING	2				
7	CIR-3800	CIRCLIP	3				
8	CIR-2700	CIRCLIP	3				
9	191828 01	LAYSHAFT	1				
10	191823 01	BEVEL GEAR (15T)	1				
11	BRG-6800	BEARING	1				
12							
13	HSS-0194	SET SCREW	14				
14	WSH-0061	SPRING WASHER	14				
15	192924 01	REMOVABLE COVER	1				
16	ORA260000	'O' RING SEAL STRIP	0.7				
17	SCW-4760	WING SCREW	3				
18	WSH-1301	SHAKEPROOF WASHER	3				
19	FIT-0223	PLUG	1				
20	FIT-0218	BREATHER	1				
21							
22	191822 18	CHANGE GEAR (18T)	1				
23	191822 20	CHANGE GEAR (20T)	1				
24	191822 22	CHANGE GEAR (22T)	1				
25	191822 24	CHANGE GEAR (24T)	1				
26	191822 26	CHANGE GEAR (26T)	1				
27	191822 28	CHANGE GEAR (28T)	1				
28	191691 02	OUTPUT HOUSING (HOLES, 1997)	1				
29	191885 01	OUTPUT SHAFT	1				
30	191824 01	BEVEL GEAR (18T)	1				
31	BRG-6000	BEARING	1				
32	BRG-5700	BEARING	1				
33	SEA-0565	ROTARY SHAFT SEAL	1				
34	191843 01	SLOTTED NUT	1				
35	PIN-1168	SPLIT PIN	1				
36	191830	GASKET SET	1				
37	191831	GASKET SET	1				



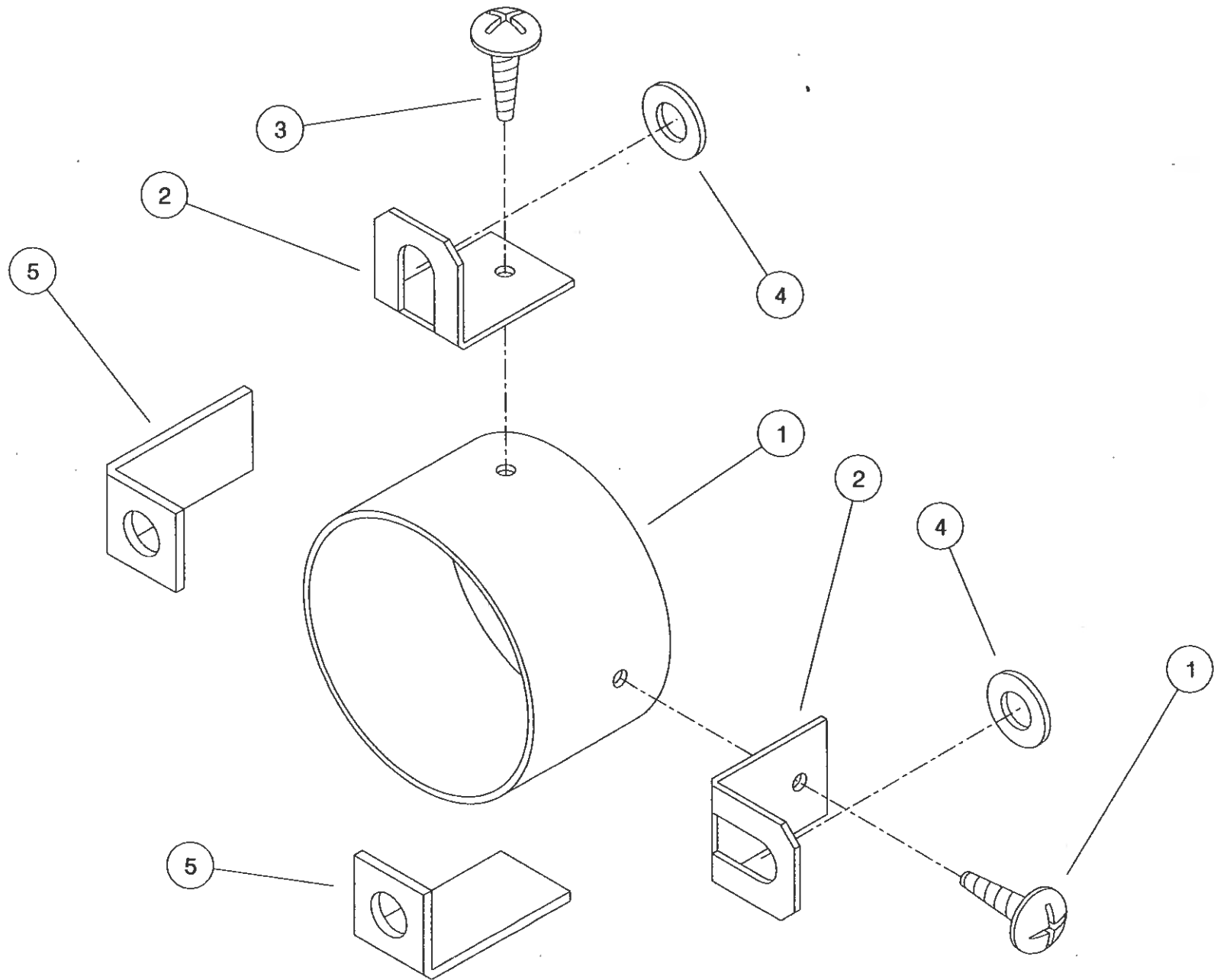
Shelbourne Reynolds Engineering Limited

ASSY NUMBER:		KIT-00116		ASSY DESCRIPTION:		AUGER DRIVE SPROCKET/CLUTCH ASSY	
ITEM	PART NO	DESCRIPTION	QTY	ITEM	PART NO	DESCRIPTION	QTY
1	192018 01	SPROCKET ASSY 50T	1				
2	BSH-3019	BUSH	1				
3	192008 01	THRUST WASHER	1				
4	192013 01	CLUTCH HUB	1				
5	131005	CLUTCH PLATE	2				
6	192014 01	DRIVE DISC	1				
7	131073 02	SPACER	4				
8	131063	SPRING	4				
9	192009 01	FIXING RING	1				
10	BLTF12563	COACH BOLT	4				
11	WSH-0018	PLAIN WASHER	4				
12	NUT-0370	HALF NUT	8				
13	192254 01	SPROCKET 50T	1				
14	192253 02	SPACER	4				
15	190119 11	WASHER	8				
16	BLTA10440	BOLT	4				
17	NUT-0265	NYLOC NUT	4				



48

ASSY NUMBER:		KIT-00525		ASSY DESCRIPTION: PTO END GUARD			
ITEM	PART NO	DESCRIPTION	QTY	ITEM	PART NO	DESCRIPTION	QTY
1	192985 06	GUARD TUBE	1				
2	192992 01	GUARD SECURING BRACKET	2				
3	SCW-5104	SCREW	2				
4	WSH-0015	WASHER	2				
5	191763 01	PTO BRACKET	2				

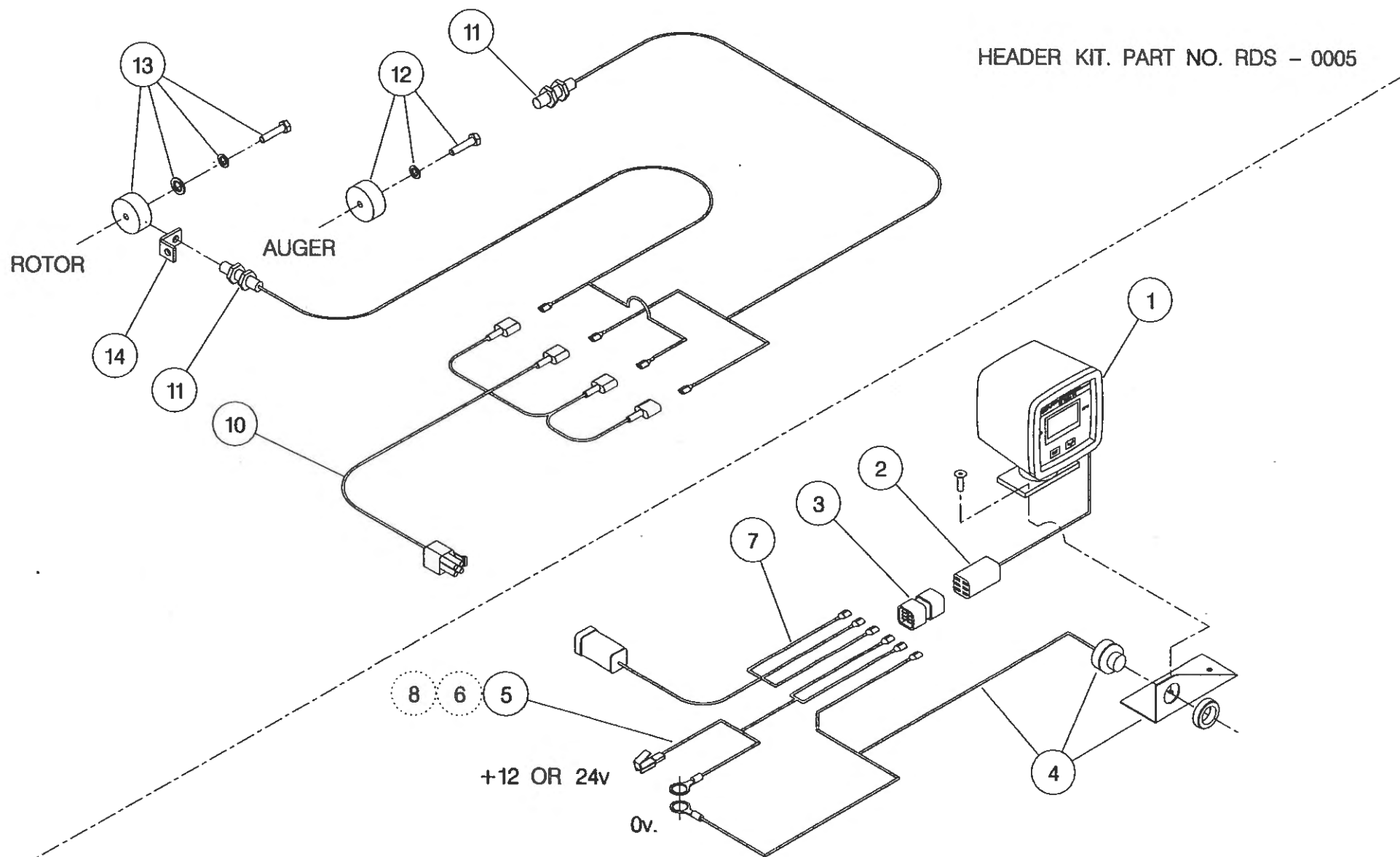


THIS KIT FIXES TO :
 R.X HEADERS - DIRECTLY ON TO DROP BOX ASSY.
 C.X HEADERS - ON TO REAR SHAFT SUPPORT BEARING PLATE.

KIT-00525

Shelbourne Reynolds Engineering Limited

ASSY NUMBER: RDS-0001/RDS-0005				ASSY DESCRIPTION: TACHO KIT			
ITEM	PART NO	DESCRIPTION	QTY	ITEM	PART NO	DESCRIPTION	QTY
1	RDS-0010	TACHO HEAD COMPLETE	1	13	RDS-0020	MAGNET CARRIER ,	1
2	RDS-0011	TACHO HEAD PLUG & ARMS	1			SET SCREW ,	1
3	RDS-0012	HARTING CONNECTOR & STICKER	1 1			PENNY WASHER & SPRING WASHER	1 1
4	RDS-0013	AUDIBLE ALARM, FIXING BRACKET & SELF TAP. SCREWS	1 1 2	14	RDS-0021	ROTOR SENSOR BRACKET	1
5	RDS-0014	POWER CONNECTION LEAD	1				
6	FUS-0022	FUSE	1				
7	RDS-0015	COMBINE LEAD	1				
8	RDS-0016	24V-12V CONVERTER KIT (NOT INCLUDED IN RDS-0001)	1				
9							
10	RDS-0017	HEADER LEAD	1				
11	RDS-0018	SHAFT SENSOR	2				
12	RDS-0019	MAGNET , TAPTITE BOLT & FIBRE WASHER	1 1 1				



COMBINE KIT. PART NO. RDS - 0001

NOTE ;

ITEM 6 IS USED IF POWER SUPPLY IS NOT FUSED.

ITEM 8 IS USED IF POWER SUPPLY IS 24V, -VE EARTH. (NOT INCLUDED IN RDS - 0001).

ITEM 4 (ALARM) IS BUILT INTO ITEM 1 (TACHO HEAD) ON LATER MODELS.

NUMERIC PARTS LIST

PART No.	PAGE	PART No.	PAGE	PART No.	PAGE
127075 10	13	191757	41	192055 01	29
127075 12	13	191758	41	192055 02	29
127075 16	13	191759 01	41	192091 01	36
131005	46	191763 01	48	192193 01	29
131014 01	8	191765 01	41	192193 02	29
.....	36	191774 01	8	192223 04	16
131063	46	36	192253 02	46
131073 02	46	191777 01	8	192254 01	46
190060 06	8	36	192258 01	8
.....	36	191798 01	38	192263 01	8
190119 04	36	191799 01	38	192265 01	8
190119 05	6	191800 01	38	192266 01	19
190119 11	46	191801 01	41	192268 02	26
190361 01	6	191803 01	41	192273 01	19
190548 01	41	191807 01	41	192291 01	34
190702 02	13	191812	38	192291 02	34
190702 03	13	191813	38	192304 01	29
190702 04	13	191819 01	38	192307 01	16
190848 05	4	191821 01	44	192310 01	16
190849 01	13	191822 18	44	192311 05	16
190859 01	24	191822 20	44	192338 01	13
191040 01	8	191822 22	44	192344 01	8
.....	36	191822 24	44	192354 01	19
191259 01	29	191822 26	44	192355 01	19
191259 02	29	191822 28	44	192361 01	24
191339 01	29	191823 01	44	192361 02	24
191340 01	29	191824 01	44	192376 01	13
191355 01	13	191825 01	44	192484 01	29
191359 01	13	191828 01	44	192484 02	29
191370 01	13	191829 01	44	192494 01	29
191642 01	6	191830	44	192524 10	6
191652 01	36	191831	44	192543 01	29
191680 01	36	191843 01	44	192550 01	29
191687 01	41	191884 01	41	192555 01	13
191691 02	44	191885 01	44	192569 01	13
191692 01	41	191894 01	41	192570 01	13
191692 02	41	191928 01	41	192636 01	10
191693 01	41	191940 01	13	192636 06	10
191694 01	41	191968 02	34	192679 01	34
191696 01	41	191981 01	6	192718 01	6
191715 01	38	191982 01	13	22
191716 01	38	191983 01	13	192812 01	22
191717 01	38	192008 01	46	192813 01	22
191718 01	38	192009 01	46	192876 01	26
191723 01	41	192011 01	16	192876 02	26
191723 02	41	192013 01	46	192890 04	34
191725 01	41	192014 01	46	192892 01	34
191735 01	38	192018 01	46	192892 02	34
191737 01	41	192037 01	6	192892 03	34
191756 01	41	192038 01	6	192897 01	34

NUMERIC PARTS LIST

<u>PART No.</u>	<u>PAGE</u>	<u>PART No.</u>	<u>PAGE</u>	<u>PART No.</u>	<u>PAGE</u>
192899 01	34	196130 01	4	BRG-7080	16
192924 01	44	196131 07	4	BSH-1530	19
192940 01	13	196132 01	4	36
192953 01	13	196133 07	4	BSH-3030	22
192954 01	29	196134 01	4	29
192954 02	29	200035 03	10	BSH-3070	29
192959 01	34	200038 01	10	BSHZ0255	8
192960 01	29	200120 02	10	CHN-0168	8
192969 01	19	AUG-0100	16	CIR-0470	8
192970 01	19	AUG-0150	16	36
192970 02	19	AUG-0200	16	CIR-1125	8
192985 06	48	AUG-0250	16	CIR-1150	29
192992 01	48	AUG-0300	16	CIR-2700	44
193091 01	13	BLT-2316	8	CIR-3800	44
193097 01	41	BLT-3745	10	CIR-4000	41
193118 01	34	BLT-3790	10	EDS-1160	22
193118 02	34	BLT-4710	29	FIT-0047	24
193203 01	16	BLTA0632	19	FIT-0212	24
193219 01	29	BLTA0647	19	FIT-0213	24
193220 01	26	BLTA0732	13	FIT-0214	24
193221 01	29	BLTA0847	13	FIT-0218	44
193222 01	29	BLTA0850	19	FIT-0223	38
193229 01	29	BLTA0853	19	44
193230 01	29	BLTA1029	22	FIT-0251	41
193231 01	29	41	FIT-0253	38
193244 01	29	BLTA1035	19	41
193248 01	29	BLTA1044	46	FIT-0254	38
193251 01	29	BLTA1052	26	FIT-0255	41
193295 01	26	BLTA1053	19	FIT-1000	24
193297 01	13	BLTA1229	36	GEA-0095	36
193320 01	16	BLTA1238	29	GEA-0101	36
193321 01	19	BLTF1256	46	GEA-0135	36
193322 01	19	BRG-0218	16	GSTA1440	22
193323 01	22	BRG-0240	10	HALAA030	24
193324 01	19	BRG-1994	8	HHDC038	24
193325 01	6	BRG-1995	8	HSS-0084	13
193338 01	13	19	19
193343 01	29	36	HSS-0086	8
193344 02	29	BRG-2250	8	HSS-0092	29
193346 01	13	BRG-3275	26	HSS-0140	6
193348 01	32	BRG-5700	44	13
193348 02	32	BRG-5800	41	16
196053 07	4	BRG-6000	44	29
196067 02	4	BRG-6600	41	HSS-0145	41
196102 05	4	44	HSS-0191	38
196118 03	4	BRG-6601	44	HSS-0194	29
196125 07	4	BRG-6800	44	36
196126 07	4	BRG-7000	38	44
196127 07	4	BRG-7020	38	HSS-0202	41
196128 07	4	BRG-7040	38	HSS-0238	26

Blank text area with faint scanning artifacts.

Blank text area with faint scanning artifacts.

Blank text area with faint scanning artifacts.

Blank text area with faint scanning artifacts.

Blank text area with faint scanning artifacts.

Blank text area with faint scanning artifacts.

Blank text area with faint scanning artifacts.

Blank text area with faint scanning artifacts.

Blank text area with faint scanning artifacts.

NUMERIC PARTS LIST

PART No.	PAGE	PART No.	PAGE	PART No.	PAGE
HSS-0238	36	NUT-0271	8	WSH-0012	19
HSS-0241	10	36	29
HSS-0260	29	NUT-0370	46	41
HSS-0265	19	NUT-0580	10	WSH-0015	10
HSS-0316	29	NUT-3000	41	16
.....	41	NUT-3010	38	19
HSS-0317	19	ORA26000	44	22
HSS-0318	8	PIN-01790	29	26
HSS-0330	36	PIN-1088	13	29
HSSA1068	19	PIN-1150	10	36
HSSF0820	34	29	41
HSSF1017	41	PIN-1168	44	48
HSSF1220	16	POP-0006	6	WSH-0018	8
HSSG102	34	13	10
HSSG121	36	29	19
K0807035	8	PSP-0120	19	29
K0807050	10	PSP-0180	19	36
K0807060	10	PTO-0901	36	46
K1008045	41	RDS-0001	4	WSH-0024	8
KIT-00116	10	RDS-0005	4	19
KIT-00525	36	RP-10087	24	29
LTC-0004	13	RP-10337	24	36
NIP-0001	22	SCCA1041	16	41
.....	29	SCW-0089	24	WSH-0030	10
NUT-0162	13	SCW-0139	38	WSH-0056	13
NUT-0170	10	SCW-0190	38	16
.....	29	41	19
NUT-0260	8	SCW-0196	41	29
.....	13	SCW-0515	26	WSH-0058	6
.....	16	SCW-1735	29	16
.....	19	SCW-4535	10	38
.....	29	SCW-4700	13	WSH-0061	19
NUT-0263	13	SCW-4760	44	22
.....	19	SCW-4960	16	38
.....	29	29	41
.....	41	SCW-5104	48	44
NUT-0265	10	SCW-5180	34	WSH-0065	26
.....	16	SEA-0550	44	36
.....	19	SEA-0565	44	WSH-0070	8
.....	22	SEA-0590	38	19
.....	26	SEA-0600	38	29
.....	29	SEA-0610	41	WSH-1010	24
.....	36	SPGA3222	19	41
.....	46	WSH-0009	8	WSH-1034	34
NUT-0269	8	13	WSH-1038	13
.....	10	16	19
.....	19	19	WSH-1300	41
.....	29	29	WSH-1301	38
.....	36	WSH-0012	13	41
NUT-0271	41	16	44

NUMERIC PARTS LIST

<u>PART No.</u>	<u>PAGE</u>
WSH-1547	29
WSH-6000	41
WSH-6010	38

<u>PART No.</u>	<u>PAGE</u>	<u>PART No.</u>	<u>PAGE</u>
-----------------	-------------	-----------------	-------------

