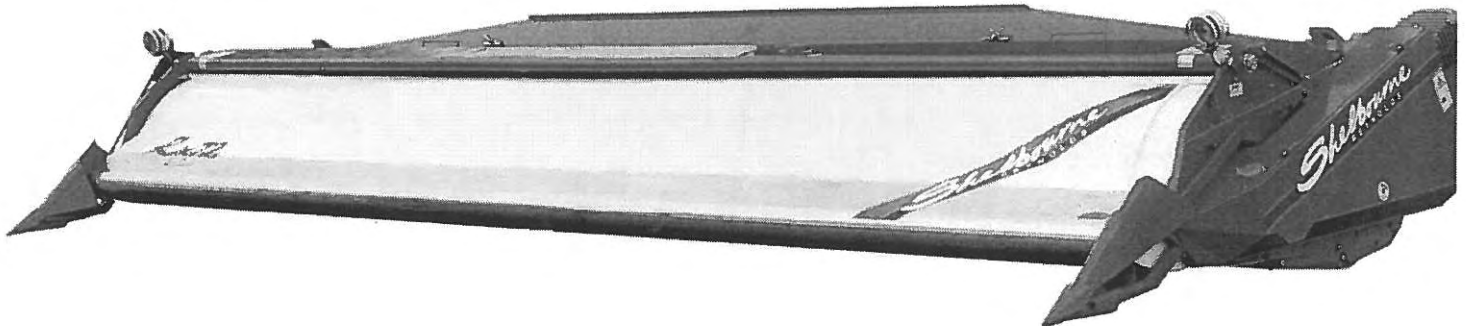


RX36 Shelbourne Header

PARTS MANUAL



Shelbourne Reynolds Engineering Ltd
Stanton
Bury St Edmunds
Suffolk IP31 2AR
England

Telephone: 01359 250415
Fax. No: 01359 250464

(Stores direct 01359 251231)
(Stores direct 01359 252031)



INVESTOR IN PEOPLE

ISSUE..1
20.3.01

SHELBOURNE HEADER PARTS MANUAL

MACHINE IDENTIFICATION

Your Shelbourne Header is designed to fit many different types of combine

For this reason the machine number index is broken down into sections for identification. Your serial and machine numbers are listed below:

SHELBOURNE HEADER SERIAL NUMBER

SHELBOURNE HEADER MACHINE NUMBER

ADAPTOR PLATE ASSEMBLY

DRIVE KIT

HYDRAULIC FITTING KIT

KIT OPTION	KIT OPTION	KIT OPTION
KIT OPTION	KIT OPTION	KIT OPTION
KIT OPTION	KIT OPTION	KIT OPTION

ORDERING SPARE PARTS

To ensure that you order the correct part from your SRE dealer please use the following procedure.

ALWAYS QUOTE THE MACHINE AND SERIAL NUMBERS WHEN ORDERING.

Refer to the front page of this parts list section (machine assemblies), listing all the sub assemblies.

Use the following sub assembly numbers and descriptions to find the area of the machine that your part is required, i.e. if you need a part which is fitted to the auger, your part will be in the auger sub assembly parts list.

Having decided which sub-assembly your part should be under, use the number beside that sub-assembly description which will begin with 1960-- -- to find the parts listing of the sub-assembly further on in the manual. The number will be printed in the top left-hand corner; the sub-assemblies are in numerical order.

Having found the correct parts list, you will find the corresponding drawing by either looking at the facing page or progressing through the manual to the next drawing.

The drawings indicate the components by item numbers, which you will find, are repeated in the left-hand side of your parts listing, and therefore referring to the correct part.

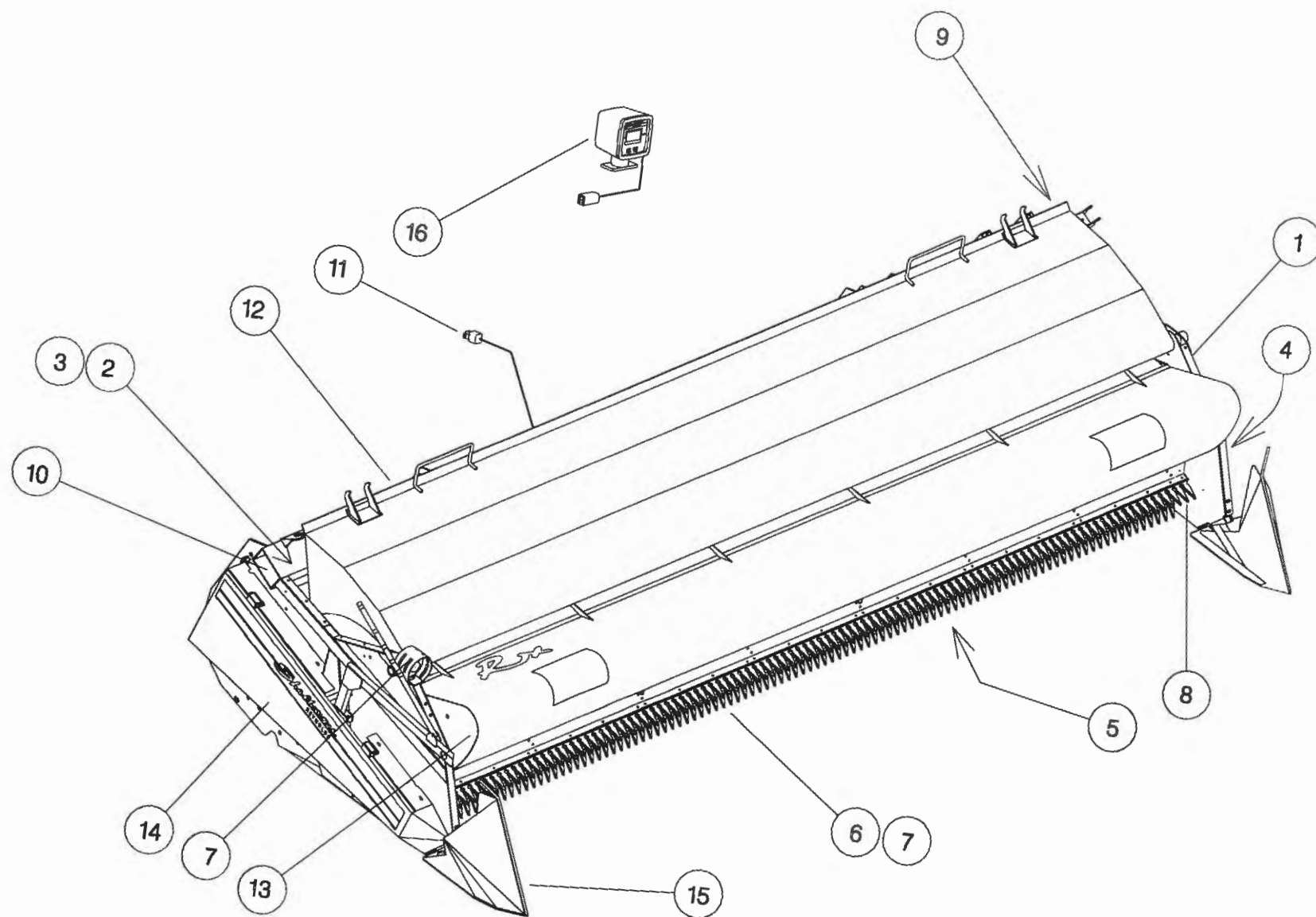
LIST OF KIT NUMBERS
FOR RX36 MACHINES

RX36 HEADER

1. 196544 06	RX36 Shelbourne Header	Page 2
2. 196053 06	Adj.. Crop Deflector Sub Assy	Page 4
3. 196067 02	Drive Components	Page 6
4. 196078 01	Torpedo Divider Sub Assy	Page 8
5. 196102 05	Auger Mounting Sub Assy	Page 10
6. 196125 06	Auger Sub Assy	Page 12
7. 196126 06	Shakerpan Sub Assy	Page 14
8. 196127 06	Hood Sub Assy	Page 16
9. 196132 01	Short Divider Sub Assy	Page 18
10. 196133 06	Stripping Rotor Sub Assy	Page 20
11. 196134 01	Rotor/Auger Drive Sub	Page 22
12. 196140 06	Hydraulics Sub Assy	Page 24
13. 196145 03	Emblems & Guards Sub Assy	Page 26
14. 196149 01	Rotor Mounting Sub Assy	Page 28
15. 196150 06	Frame & Parts Sub Assy	Page 30
16. GEA-0095	Bevel Gearbox Assy	Page 32
17. GEA-0101	Short Dropbox	Page 35/36
18. GEA-0135	5 Speed Gearbox Assy	Page 38
19. KIT-00116	Auger Drive Sprocket/Clutch Assy	Page 40
20. KIT-00525	PTO End Guard	Page 42
21. RDS-0001	Combine Monitoring Kit	Page 44
22. RDS-0005	Header Monitoring Kit	Page 44

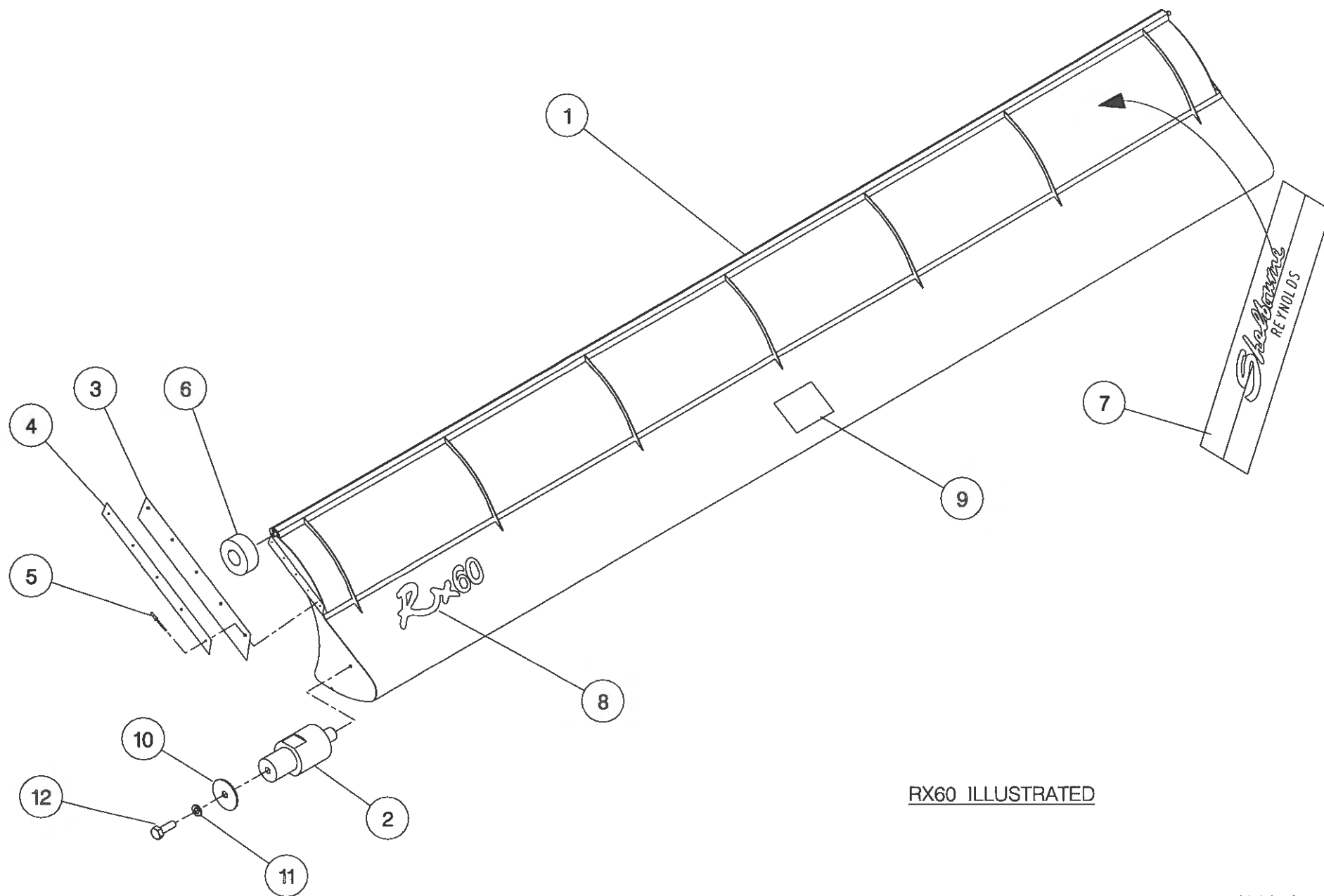
Shelbourne Reynolds Engineering Limited

ASSY NUMBER: 196544 06				ASSY DESCRIPTION: RX36 SHAKERPAN SHELBOURNE HEADER(1998)			
ITEM	PART NO	DESCRIPTION	QTY	ITEM	PART NO	DESCRIPTION	QTY
1	196150 06	FRAME & PARTS	1				
2	196125 06	AUGER ASSY	1				
3	196102 05	AUGER MTG SUB	1				
4	196067 02	DRIVE COMPONENTS	1				
5	196126 06	SHAKERPAN SUB	1				
6	196133 06	STRIPPING ROTOR ASSY	1				
7							
8	196149 01	ROTOR MTG SUB	1				
9	196134 01	ROTOR/AUGER DRIVE SUB	1				
10	196140 06	HYDRAULICS	1				
11	RDS-0005	HEADER MONITORING KIT	1				
12	196127 06	HOOD SUB ASSY	1				
13	196053 06	ADJ CROP DEFLECTOR SUB	1				
14	196145 03	EMBLEMS & GUARDS	1				
15	196132 01	SHORT DIVIDER SUB	1				
OR	196078 01	TORPEDO DIVIDER SUB	1				
16	RDS-0001	COMBINE MONITOR KIT	1				



Shelbourne Reynolds Engineering Limited

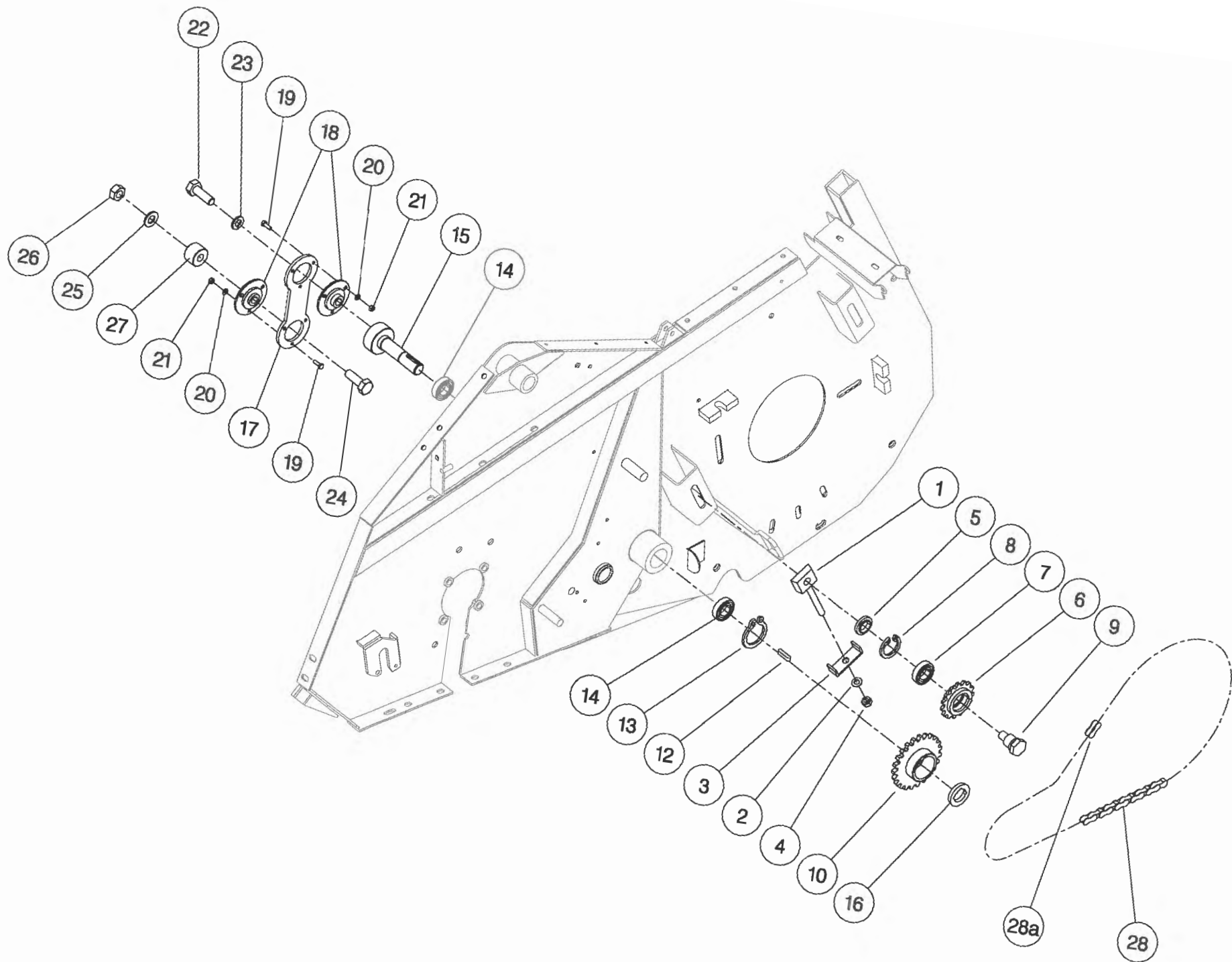
ASSY NUMBER:		196053 06	ASSY DESCRIPTION: ADJ.CROP DEFLECTOR SUB ASSY (RX36)				
ITEM	PART NO	DESCRIPTION	QTY	ITEM	PART NO	DESCRIPTION	QTY
1	195064 01	ADJ.CROP DEFLECTOR	1				
2	190361 01	PIVOT BUSH	2				
3	192037 01	RUBBER SEAL	2				
4	192038 01	CLAMP STRIP	2				
5	POP-0006	POP RIVET	10				
6	191642 01	ROLLER	2				
7	191981 01	EMBLEM (SHEL.REYNOLDS)	1				
8	192524 12	EMBLEM (RX36)	1				
9	192718 01	TRANSFER (NO STEP)	1				
10	190119 05	PLAIN WASHER	2				
11	WSH-0058	WASHER	2				
12	HSS-0140	SETSCREW	2				



RX60 ILLUSTRATED

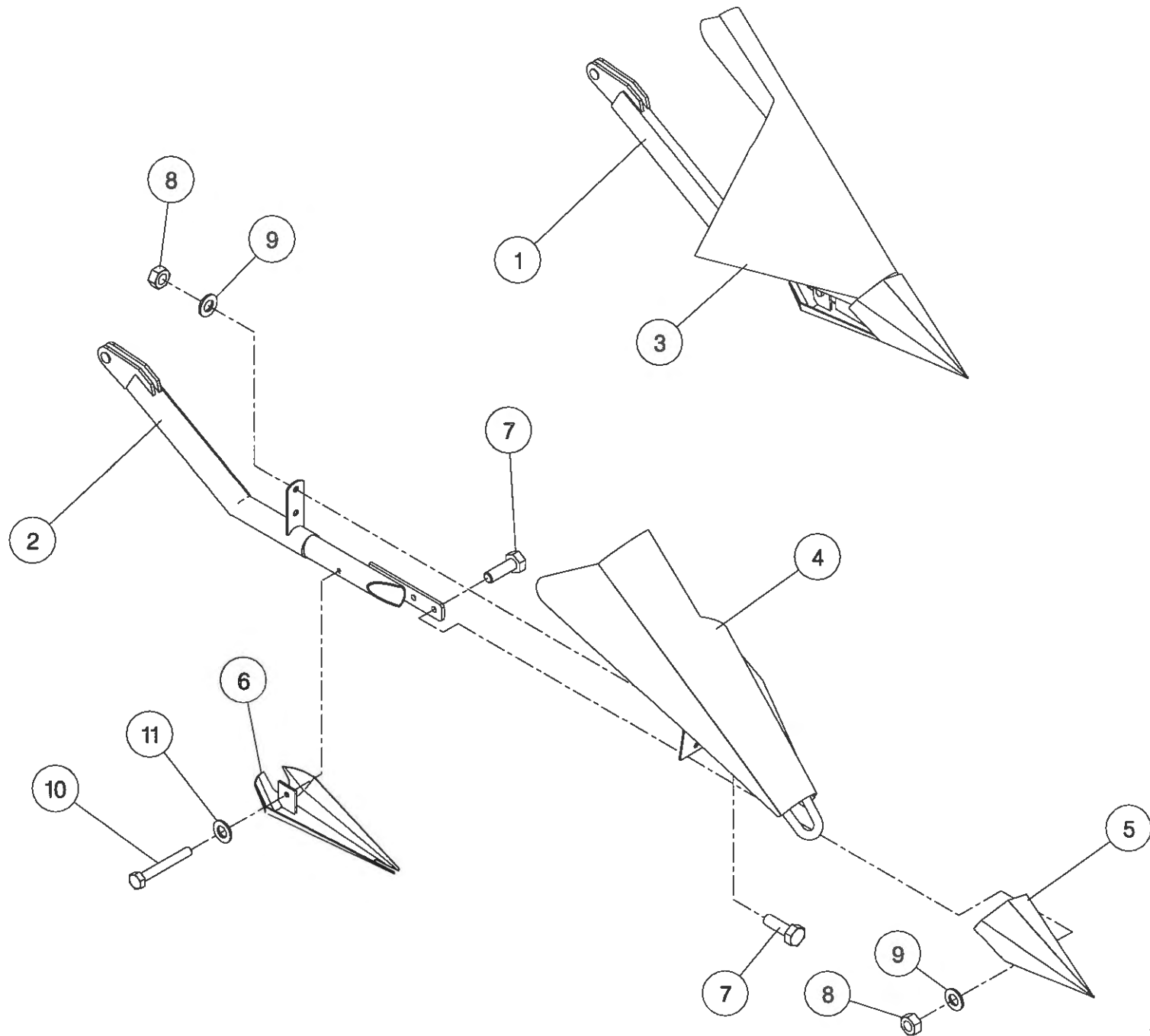
Shelbourne Reynolds Engineering Limited

ASSY NUMBER: 196067 02				ASSY DESCRIPTION:DRIVE PARTS SHAKERPAN STD			
ITEM	PART NO	DESCRIPTION	QTY	ITEM	PART NO	DESCRIPTION	QTY
1	191777 01	IDLER ADJ SCREW	1				
2	WSH-0018	WASHER	1				
3	191774 01	PLATE	1				
4	NUT-0269	NUT	1				
5	191040 01	SPACER	1				
6	131014 01	SPROCKET IDLER	1				
7	BRG-1995	BEARING	1				
8	CIR-0470	CIRCLIP	1				
9	190060 06	IDLER SPINDLE	1				
10	192258 01	PAN DRIVE SPROCKET 25T	1				
11							
12	K0807035	KEY	1				
13	CIR-1125	CIRCLIP	1				
14	BRG-1994	BEARING	2				
15	192263 01	PAN DRIVE SHAFT	1				
16	BSHZ02553	LOCKING BUSH	1				
17	192265 01	PITMAN	1				
18	BRG-22500	BEARING	2				
19	HSS-0086	SETSCREW	6				
20	WSH-0009	FLAT WASHER	6				
21	NUT-0260	NUT	6				
22	HSS-0318	SETSCREW	1				
23	WSH-0070	SPRING WASHER	1				
24	BLT-2316	BOLT	1				
25	WSH-0024	FLAT WASHER	1				
26	NUT-0271	NUT	1				
27	192344 01	SPACER	1				
28	CHN-01682	CHAIN + JOINER	1				
28a	CHN-01600	CHAIN JOINER LINK	1				



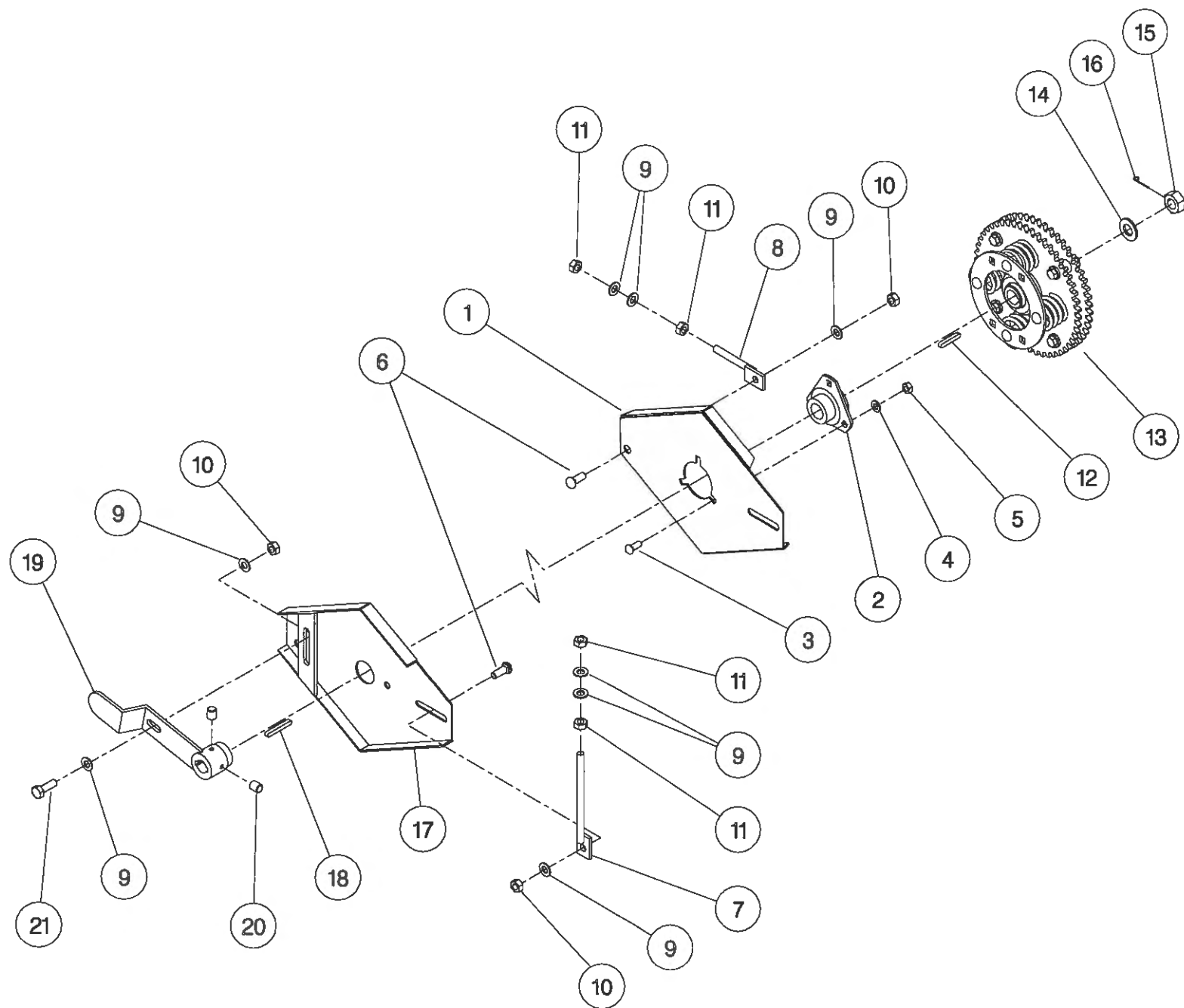
Shelbourne Reynolds Engineering Limited

ASSY NUMBER: 196078 01				ASSY DESCRIPTION: TORPEDO DIVIDERS FOR RX & CX MACHINES			
ITEM	PART NO	DESCRIPTION	QTY	ITEM	PART NO	DESCRIPTION	QTY
1	192533 01	DIVIDER ARM LH	1				
2	192533 02	DIVIDER ARM RH	1				
3	192537 01	DIVIDING PLATE LH	1				
4	192537 02	DIVIDING PLATE RH	1				
5	191770 01	NOSE CONE	2				
6	191862 01	SHOE	2				
7	HSS-0191	SETSCREW	8				
8	NUT-0265	NUT	8				
9	WSH-0015	WASHER	8				
10	HSS-0155	BOLT	2				
11	WSH-0058	WASHER	2				



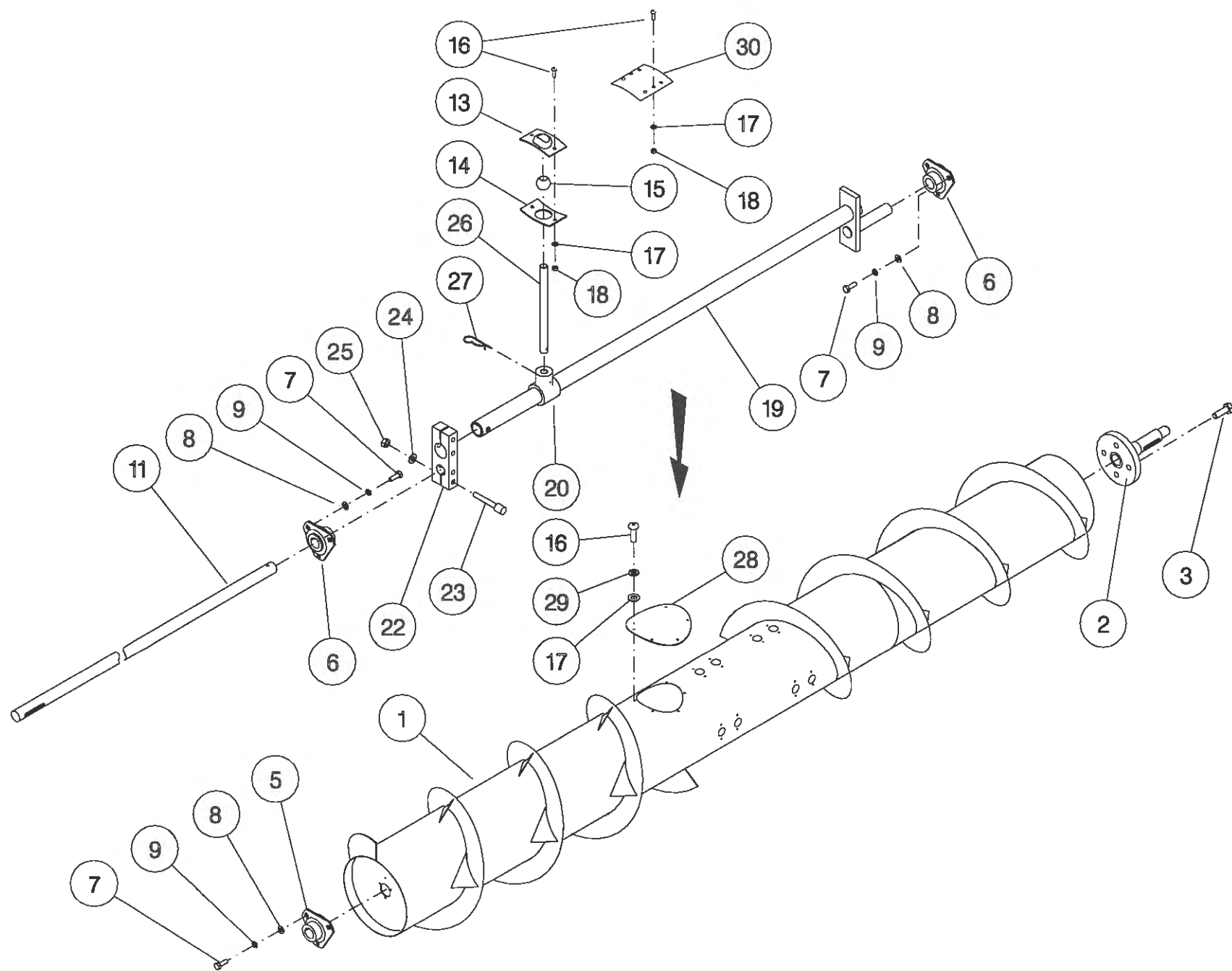
Shelbourne Reynolds Engineering Limited

ASSY NUMBER: 196102 05				ASSY DESCRIPTION: AUGER MOUNTING/DRIVE (RX3.6/4.2) 1997			
ITEM	PART NO	DESCRIPTION	QTY	ITEM	PART NO	DESCRIPTION	QTY
1	200035 03	SUPPORT PLATE L.H.	1				
2	BRG-0240	BEARING	1				
3	BLT-3745	COACH BOLT	3				
4	WSH-0015	PLAIN WASHER	3				
5	NUT-0265	NYLOC NUT	3				
6	BLT-3790	COACH BOLT	4				
7	192636 06	VERTICAL ADJUSTER	2				
8	192636 01	HORIZONTAL ADJUSTER	2				
9	WSH-0018	PLAIN WASHER	14				
10	NUT-0269	NYLOC NUT	5				
11	NUT-0170	PLAIN NUT	8				
12	K0807050	KEY	1				
13	KIT-00116	AUGER SLIP CLUTCH	1				
14	WSH-0030	PLAIN WASHER	1				
15	NUT-0580	CASTLE NUT	1				
16	PIN-1150	SPLIT PIN	1				
17	200038 01	SUPPORT PLATE R.H.	1				
18	K0807060	KEY	1				
19	200120 02	ADJUSTER ASSY	1				
20	SCW-4535	GRUB SCREW	2				
21	HSS-0241	SET SCREW	1				



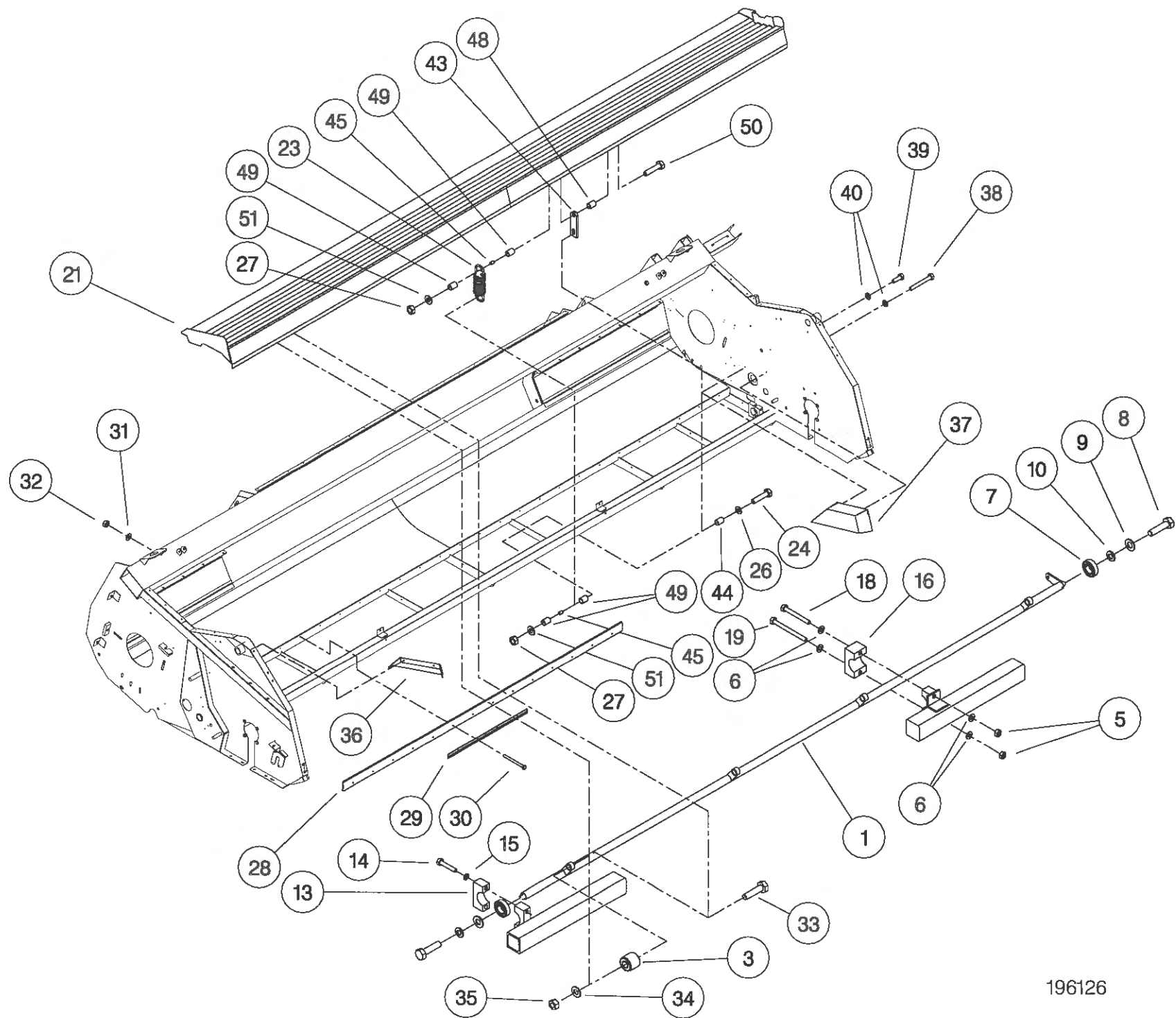
Shelbourne Reynolds Engineering Limited

ASSY NUMBER: 196125 06				ASSY DESCRIPTION: AUGER ASSY 3.6M (RET.FIN/LARGE DIA.)			
ITEM	PART NO	DESCRIPTION	QTY	ITEM	PART NO	DESCRIPTION	QTY
1	195059 01	AUGER W.ASSY.	1				
2	192011 01	AUGER DRIVE SHAFT	1				
3	HSSF12204	SET SCREW	4				
4							
5	BRG-0218	BEARING	1				
6	BRG-7080	BEARING	2				
7	HSS-0140	SET SCREW	9				
8	WSH-0012	PLAIN WASHER	9				
9	WSH-0058	SPRING WASHER	9				
10							
11	192223 11	AUGER SHAFT	1				
12							
13	AUG-01000	UPPER FINGER PL. (CONCAVE)	16				
14	AUG-01500	LOWER FINGER PL. (CONVEX)	16				
15	AUG-02000	FINGER GUIDE (BALL)	16				
16	SCW-4960	BUTT.HD.SKT.SCREW	44				
17	WSH-0009	PLAIN WASHER	44				
18	NUT-0260	NYLOC NUT	32				
19	192311 05	AUGER CRANK	1				
20	AUG-02500	FINGER HOLDER	16				
21							
22	192307 01	AUGER CLAMP	1				
23	SCCA10412	CAP HD SKT SCREW	4				
24	WSH-0015	PLAIN WASHER	4				
25	NUT-0265	NYLOC NUT	4				
26	192310 01	FINGER	16				
27	AUG-03000	HAIRPIN COTTER	16				
28	193203 01	COVER PLATE	2				
29	WSH-0056	SPRING WASHER	12				
30	190735 01	BLANKING PLATE					



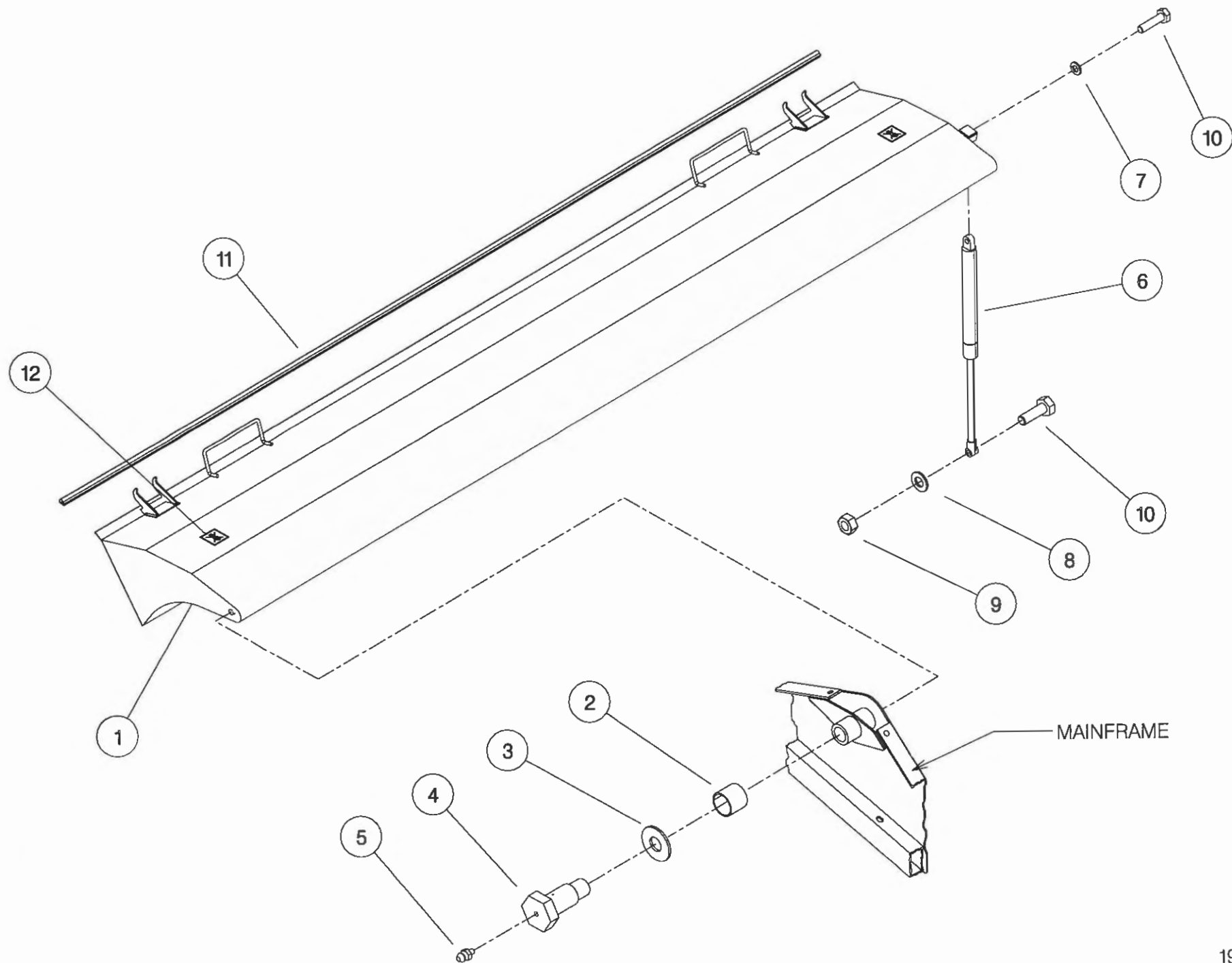
Shelbourne Reynolds Engineering Limited

ASSY NUMBER: 196126 06				ASSY DESCRIPTION: SHAKER PAN SUB - RX36			
ITEM	PART NO	DESCRIPTION	QTY	ITEM	PART NO	DESCRIPTION	QTY
1	195061 01	TORSION TUBE	1	38	BLTA06320	BOLT	2
2				39	HSS-0084	SET SCREW	2
3	BSH-1530	RUBBER BUSH INSERT	4	40	WSH-0056	SPRING WASHER	4
4				41			
5	NUT-0265	NYLOC NUT	4	42			
6	WSH-0015	FLAT WASHER	8	43	192969 01	RETAINER	4
7	BRG-1995	BEARING	2	44	192970 01	TUBE	4
8	HSS-0315	SET SCREW	2	45	PSP-01201	PLASTIC SPACER	8
9	WSH-0070	SPRING WASHER	2	46			
10	WSH-0024	PLAIN WASHER	2	47			
11				48	192970 02	TUBE	4
12				49	PSP-01800	PLASTIC SPACER	16
13	192264 02	CLAMP BLOCK TOP	2	50	BLTA08530	BOLT	4
14	BLTA10350	BOLT	4	51	WSH-1038	PENNY WASHER	8
15	WSH-0061	SPRING WASHER	4				
16	192266 01	PIVOT BLOCK (PAIR)	2				
17							
18	BLTA10530	BOLT	2				
19	HSSA10680	SETSCREW	2				
20							
21	195065 01	SHAKER PAN ASSY	1				
22							
23	SPGA32221	SPRING	4				
24	BLTA08500	BOLT	4				
25							
26	WSH-0012	WASHER	4				
27	NUT-0263	NUT	8				
28	193324 02	SEAL STRIP	2				
29	192273 01	CLAMP STRIP	6				
30	BLTA06470	BOLT	24				
31	WSH-0009	FLAT WASHER	24				
32	NUT-0260	NYLOC NUT	24				
33	HSS-0265	SET SCREW	4				
34	WSH-0018	PLAIN WASHER	4				
35	NUT-0269	NYLOC NUT	4				
36	192355 01	END DEFLECTOR R.H.	1				
37	192354 01	END DEFLECTOR L.H.	1				



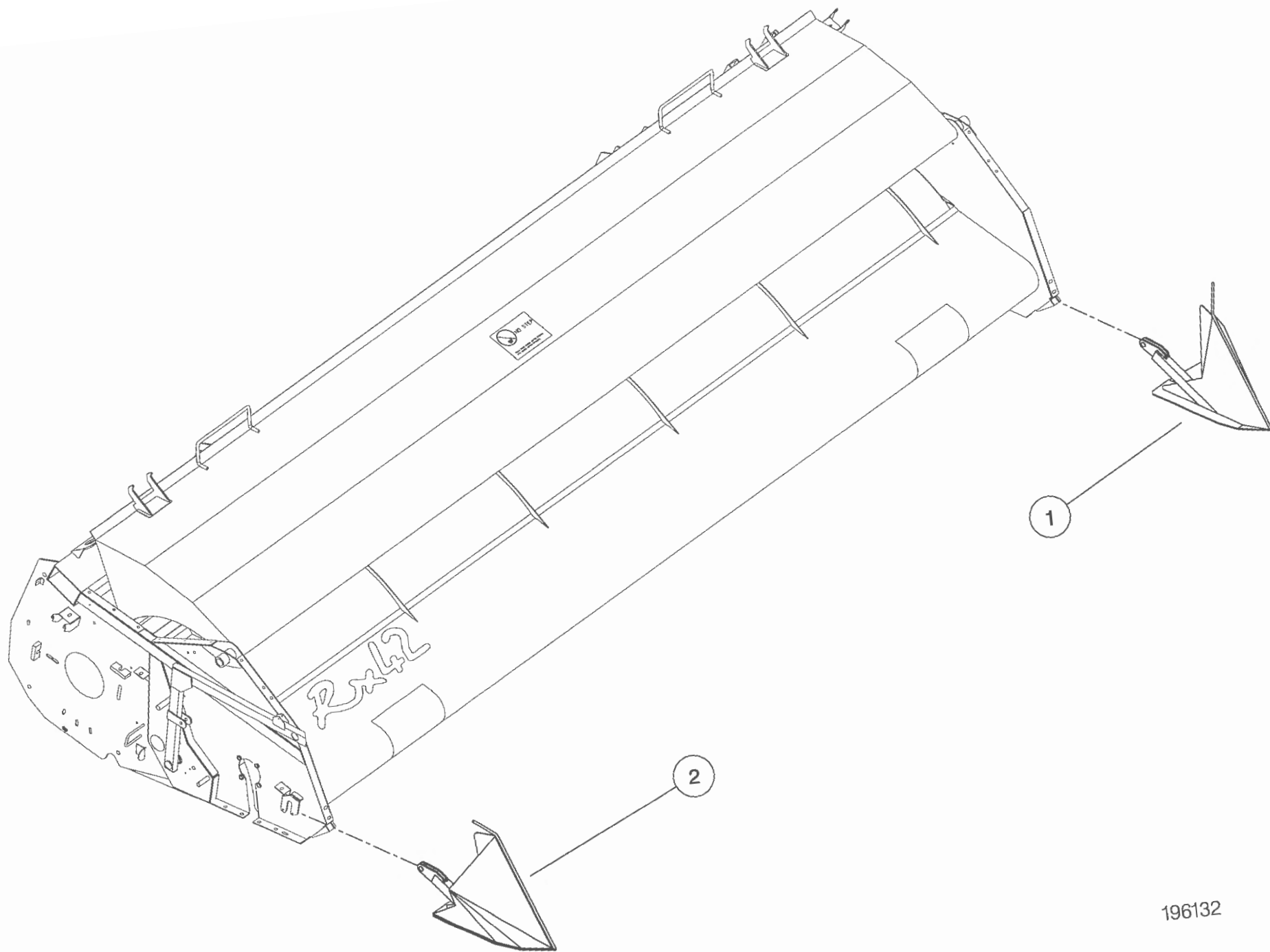
Shelbourne Reynolds Engineering Limited

ASSY NUMBER: 196127 06				ASSY DESCRIPTION: TOP DOOR COWL ASSY (RX36)			
ITEM	PART NO	DESCRIPTION	QTY	ITEM	PART NO	DESCRIPTION	QTY
1	195062 01	COWL ASSY	1				
2	BSH-3030	BUSH	2				
3	192813 01	LARGE WASHER	2				
4	192812 01	COWL PIN	2				
5	NIP-0001	GREASE ZERK	2				
6	GSTA14406	GAS STRUTT	1				
7	WSH-0061	WASHER	1				
8	WSH-0015	WASHER	1				
9	NUT-0265	NUT	1				
10	BLTA10290	BOLT	2				
11	EDS-11600	SEAL STRIP	3.6m				
12	192718 01	TRANSFER (NO STEP)	2				



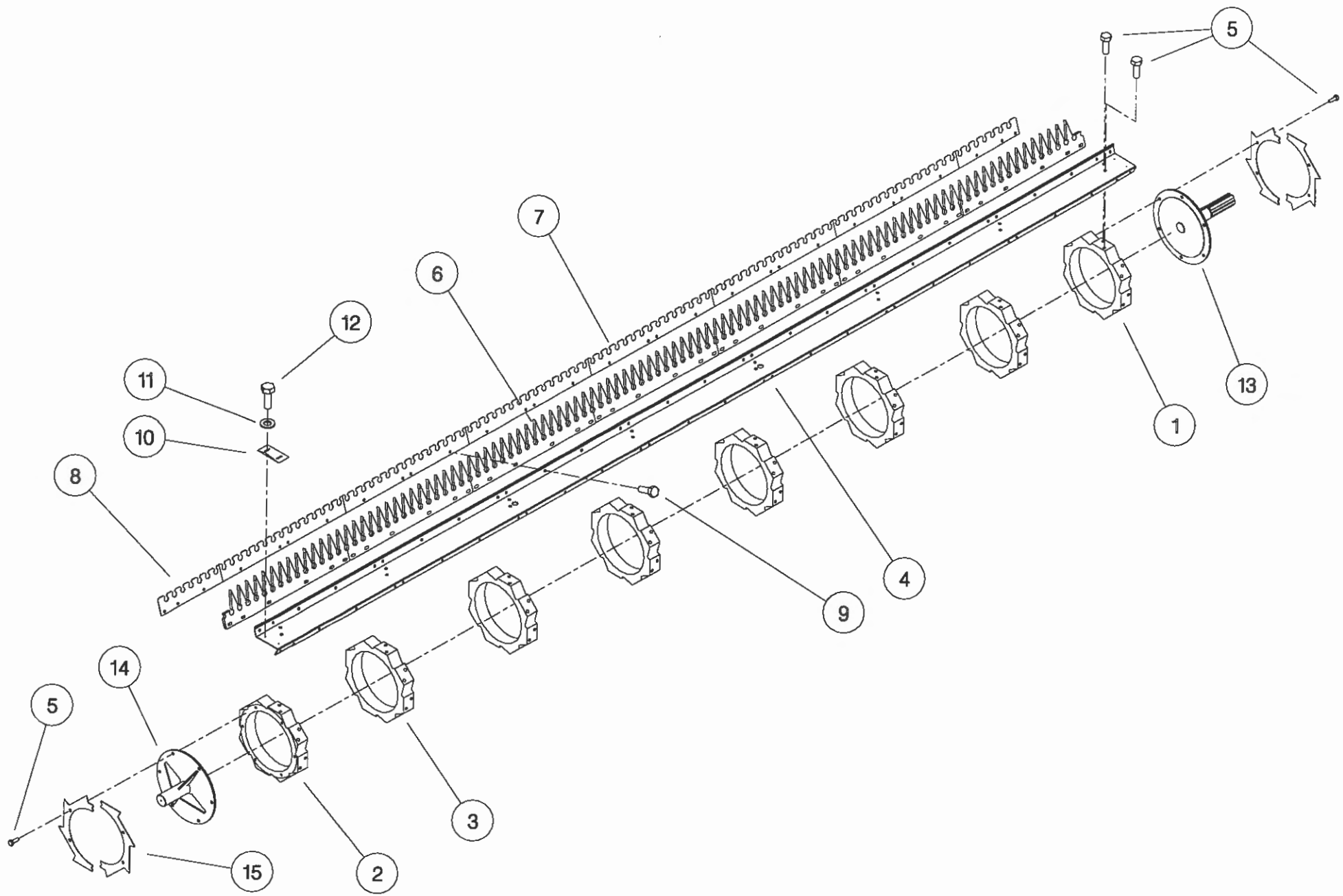
18

ITEM		PART NO	DESCRIPTION	QTY	ASSY DESCRIPTION: SHORT DIVIDERS SUB (RX & CX)			
1		193348 01	SHORT DIVIDER LH	1				
2		193348 02	SHORT DIVIDER RH	1				



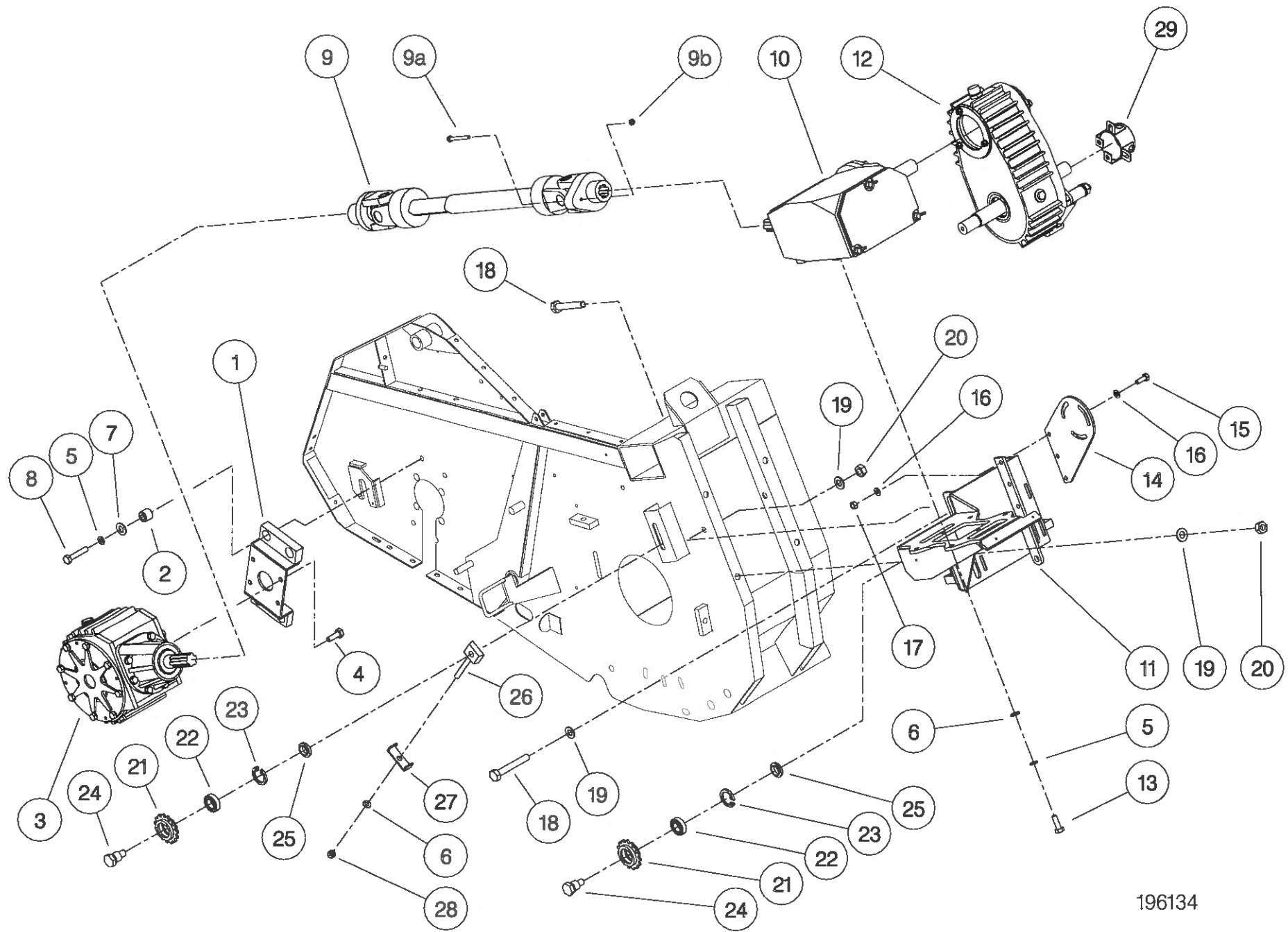
Shelbourne Reynolds Engineering Limited

ASSY NUMBER:		ASSY DESCRIPTION:STRIPPING ROTOR ASSY 3.6m					
ITEM	PART NO	DESCRIPTION	QTY	ITEM	PART NO	DESCRIPTION	QTY
1	192892 01	OUTER HUB CASTING L.H.	1				
2	192892 02	OUTER HUB CASTING R.H.	1				
3	192892 03	INNER HUB CASTING	5				
4	192890 03	ROTOR SECTION 3.6M	8				
5	HSSG10204	SET SCREW	124				
6	191968 02	ELITE ELEMENT	32				
OR	193087 01	ELITE ELEMENT(SLOTTED)	32				
7	192291 01	ANTI WEAR STRIP CTR.	40				
OR	192291 07	S-TYPE STRIP CTR	40				
8	192291 02	ANTI WEAR STRIP END	16				
OR	192291 08	S-TYPE STRIP END	16				
9	HSSF08174	SET SCREW	208				
10	192679 01	ANTI WRAP PLATE	16				
11	WSH-1034	PENNY WASHER	32				
12	SCW-5180	SELF TAP.SCREW	32				
13	192897 01	DRIVE SHAFT W/ASSY	1				
14	192899 01	IDLE SHAFT W/ASSY	1				
15	192959 01	OUTER CLAMP RING (HALF)	4				
	193118 01	BALANCE WEIGHT	6				
	193118 02	BALANCE WEIGHT	2				



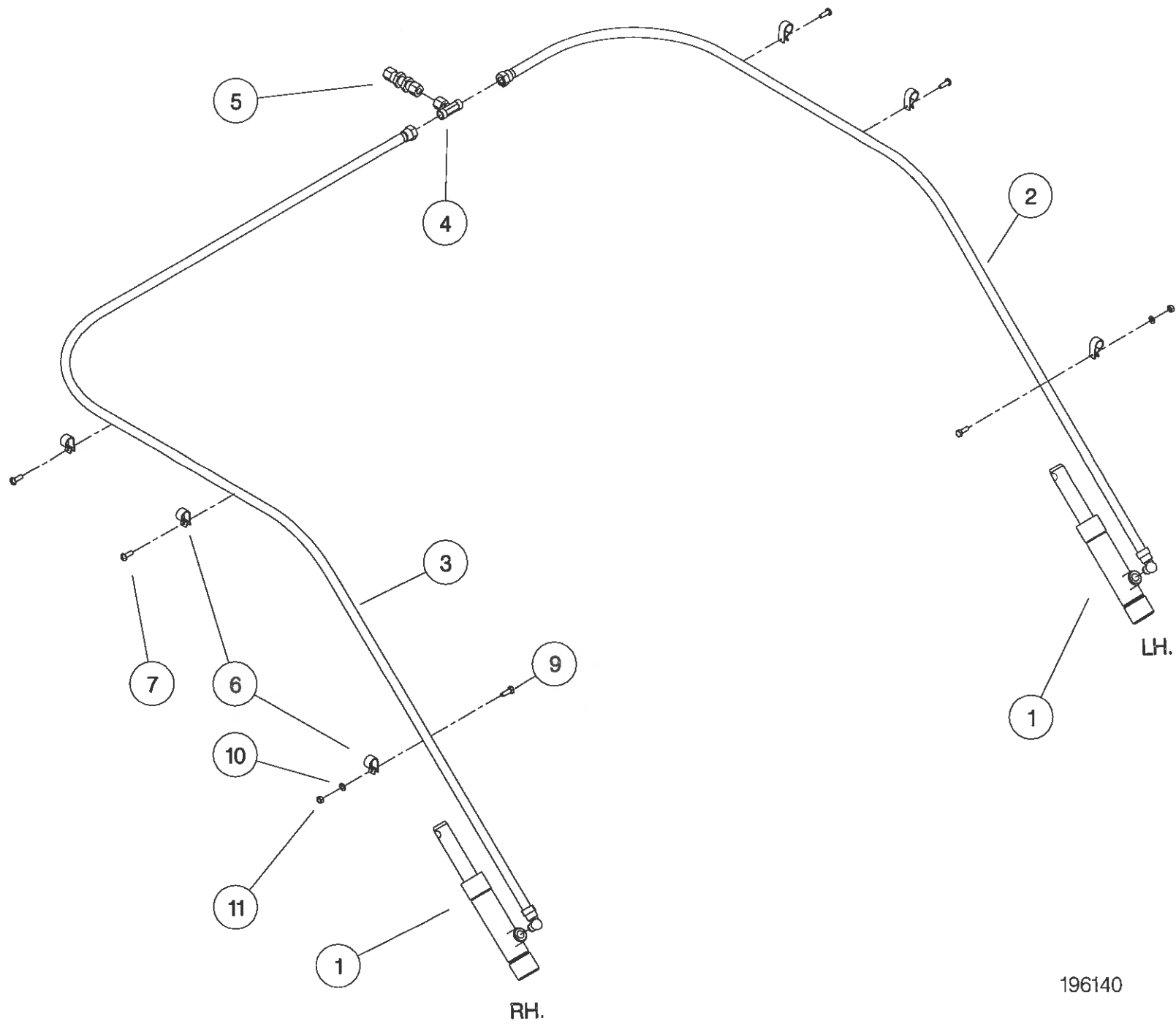
Shelbourne Reynolds Engineering Limited

ASSY NUMBER: 196134 01				ASSY DESCRIPTION: ROTOR/AUGER DRIVE 1997			
ITEM	PART NO	DESCRIPTION	QTY	ITEM	PART NO	DESCRIPTION	QTY
1	191652 01	GEARBOX BRACKET	1				
2	BSH-1530	BUSH	4				
3	GEA-0095	BEVEL GEARBOX	1				
4	HSSG12174	SET SCREW	4				
5	WSH-0065	SPRING WASHER	10				
6	WSH-0018	PLAIN WASHER	7				
7	190119 04	PLAIN WASHER	4				
8	BLTA12290	BOLT	4				
9	PTO-09011	POWER SHAFT	1				
9a	BLTA07320	SHEAR BOLT					
9b	NUT-0162	NUT					
10	GEA-0135	FIVE SPEED GEARBOX ASSY	1				
11	192091 01	GEARBOX BRACKET	1				
12	GEA-0101	DROPBOX ASSY	1				
13	HSS-0238	SET SCREW	6				
14	191680 01	DROP BOX SUPPORT PLATE	1				
15	HSS-0194	SET SCREW	3				
16	WSH-0015	PLAIN WASHER	6				
17	NUT-0265	NYLOC NUT	3				
18	HSS-0330	SETSCREW	4				
19	WSH-0024	PLAIN WASHER	6				
20	NUT-0271	NYLOC NUT	4				
21	131014 01	SPROCKET IDLER	2				
22	BRG-1995	BEARING	2				
23	CIR-0470	CIRCLIP	2				
24	190060 06	IDLER SPINDLE	2				
25	191040 01	IDLER SPACER	2				
26	191777 01	IDLER ADJ SCREW	1				
27	191774 01	PLATE	1				
28	NUT-0269	NUT	1				
29	KIT-00525	PTO GUARD KIT	1				



Shelbourne Reynolds Engineering Limited

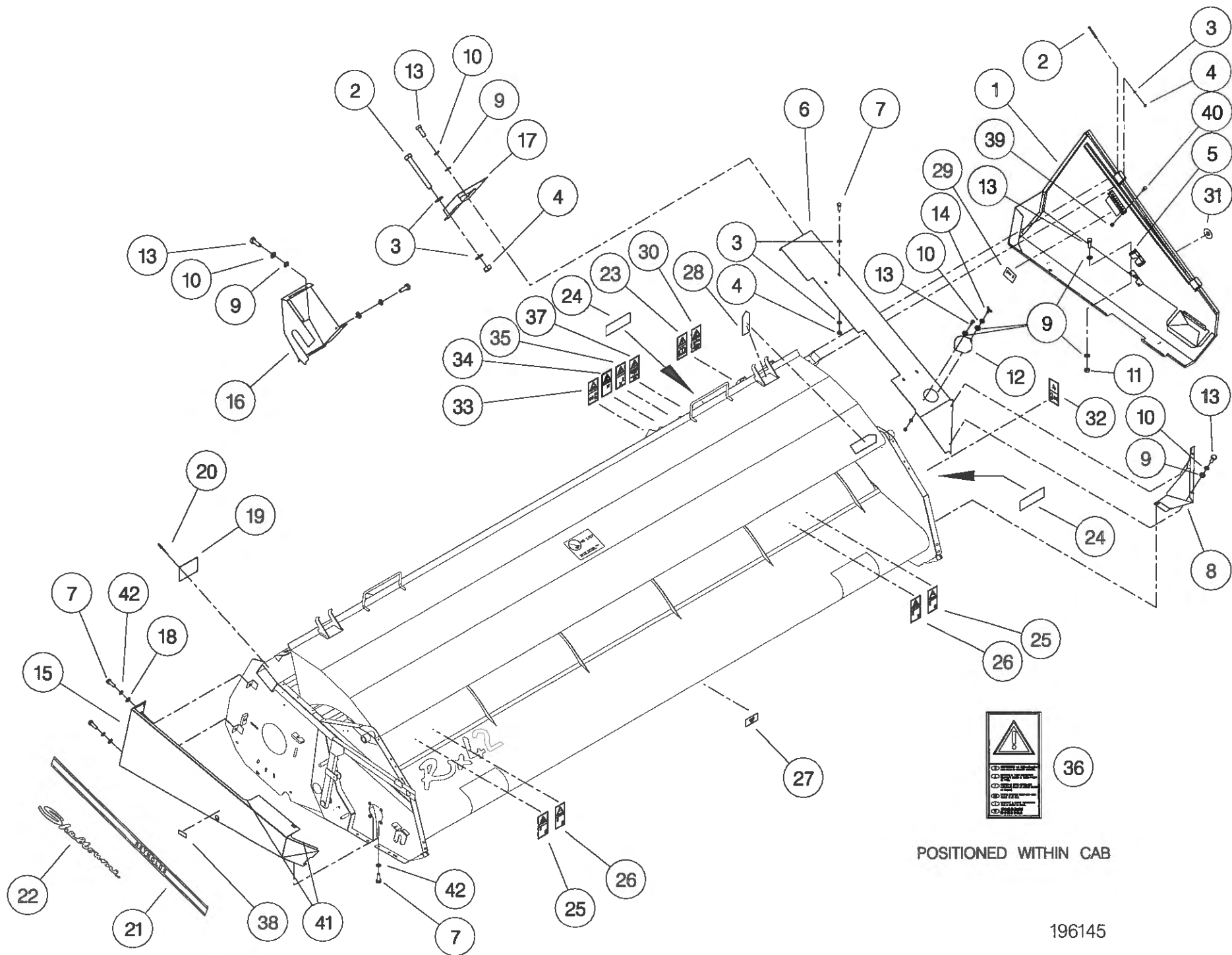
ASSY NUMBER: 196140 06				ASSY DESCRIPTION: HYDRAULIC CIRCUIT SUB 3.6M			
ITEM	PART NO	DESCRIPTION	QTY	ITEM	PART NO	DESCRIPTION	QTY
1	REF	HYDRAULIC RAM	2				
2	HHBC16610	HYDRAULIC HOSE LH	1				
3	HHBC41610	HYDRAULIC HOSE RH	1				
4	HPPD07100	HYD.TEE FITTING	1				
5	FIT-0213	HYD.BULKHEAD FITT.	1				
6	CLP-01012	P CLIP	6				
7	SCW-5180	SELF TAP SCREW	4				
8							
9	HSS-0086	SETSCREW	2				
10	WSH-0009	PLAIN WASHER	2				
11	NUT-0260	NYLOC NUT	2				



196140

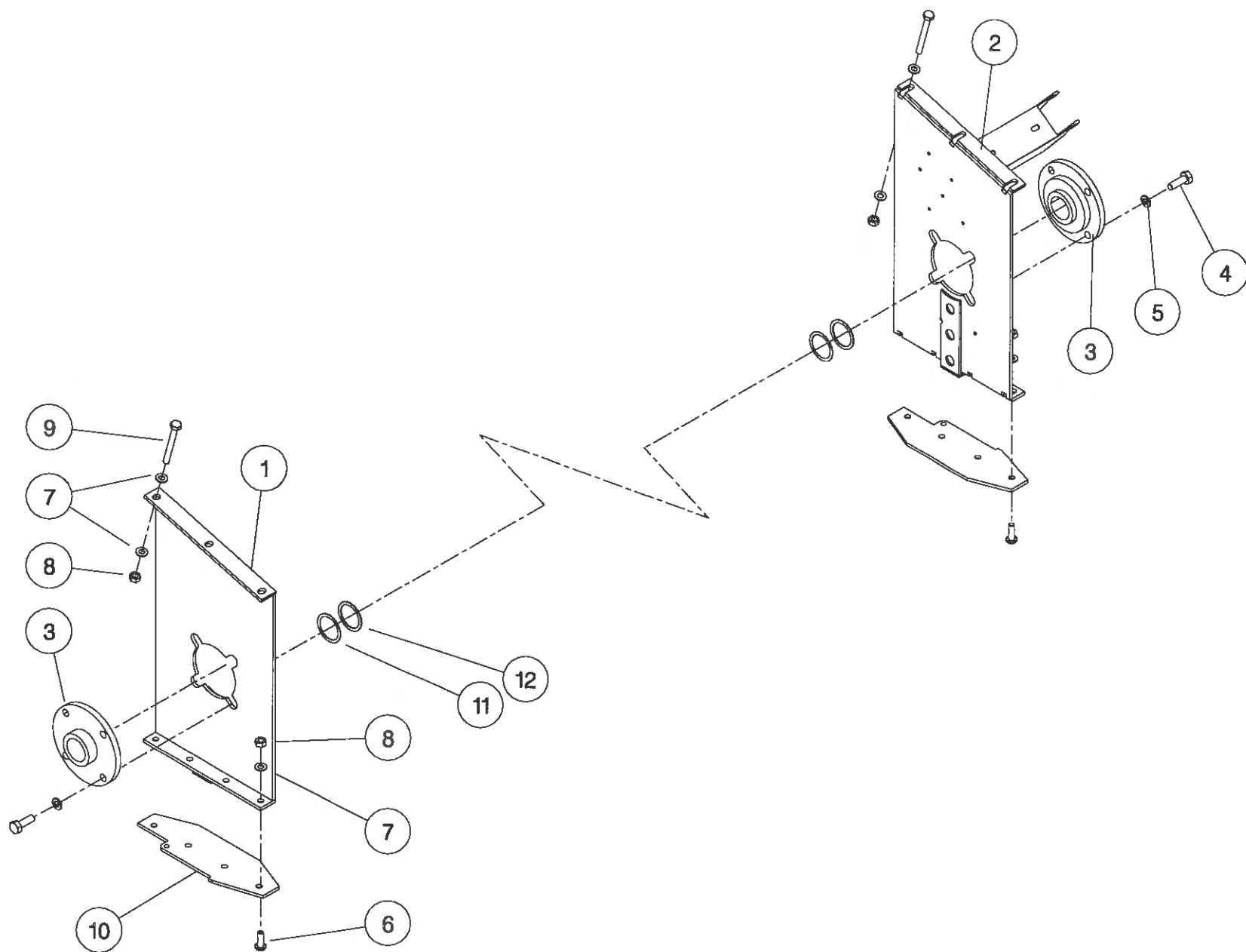
Shelbourne Reynolds Engineering Limited

ASSY NUMBER: 196145 03				ASSY DESCRIPTION: EMBLEMS AND GUARDS SUB(1998)			
ITEM	PART NO	DESCRIPTION	QTY	ITEM	PART NO	DESCRIPTION	QTY
1	193338 01	L.H.GUARD	1	39	NUT-0162	NUT	10
2	BLTA08470	BOLT	3	40	BLTA07320	SHEARBOLT	10
3	WSH-0012	PLAIN WASHER	14	41	EDS-11400	EDGING STRIP	2.4
4	NUT-0263	NYLOC NUT	10	42	WSH-0058	WASHER	4
5	LTC-00040	SLAM LATCH	1	43	194364 01	CANNISTER BRACKET	1
6	193297 01	L.H. TOP COVER	1	44	WDA-00025	CANNISTER	1
7	HSS-0140	SET SCREW	9	45	HSS-0145	SET SCREW	2
8	192570 01	FRONT DEFLECTOR L.H.	1	46	CHN-0145	CHAIN	0.17
9	WSH-0009	PLAIN WASHER	10	47	RCL-0015	R CLIP	1
10	WSH-0056	SPRING WASHER	8	48	195104 01	EMBLEM(DO NOT OVERTIGHTEN)	2
11	NUT-0260	NYLOC NUT	3				
12	191355 01	COVER	1				
13	HSS-0084	SET SCREW	12				
14	SCW-4700	WING SCREW	1				
15	193478 01	R.H.GUARD	1				
16	195067 01	REAR DRIVE GUARD	1				
17	193346 01	REAR UPPER GUARD	1				
18	WSH-1038	PENNY WASHER	3				
19	191359 01	IDENTIFICATION PLATE	1				
20	POP-0006	POP RIVET	4				
21	191983 01	EMBLEM (STRIPE & REYNOLDS)	2				
22	191982 01	EMBLEM (SHELBOURNE)	2				
23	610257 01	EMBLEM (READ MANUAL)	1				
24	127075 12	EMBLEM (GREASE 10 HOURS)	2				
25	193388 01	EMBLEM (FLYING OBJECTS)	2				
26	193389 01	EMBLEM (KEEP AWAY)	2				
27	193395 01	EMBLEM (TENSILOCK)	4				
28	190702 04	EMBLEM (SLING POINT)	4				
29	191940 01	EMBLEM (SHEARBOLT PART No.)	1				
30	610250 01	EMBLEM (SAFETY MAINTENANCE)	1				
31	192953 01	EMBLEM (1/4 TURN)	1				
32	193392 01	EMBLEM (STOP ENG BEFORE...)	1				
33	193393 01	EMBLEM (STOP ENG BEFORE...)	1				
34	193390 01	EMBLEM (DONT HANG CHAIN)	1				
35	193391 01	EMBLEM (PTO GUARD)	1				
36	193394 01	EMBLEM (ENGAGE STRIP ROTOR)	1				
37	193387 01	EMBLEM (AUGER/ROTOR SPEED)	1				
38	127075 16	EMBLEM (GREASE 50 HOURS)	7				



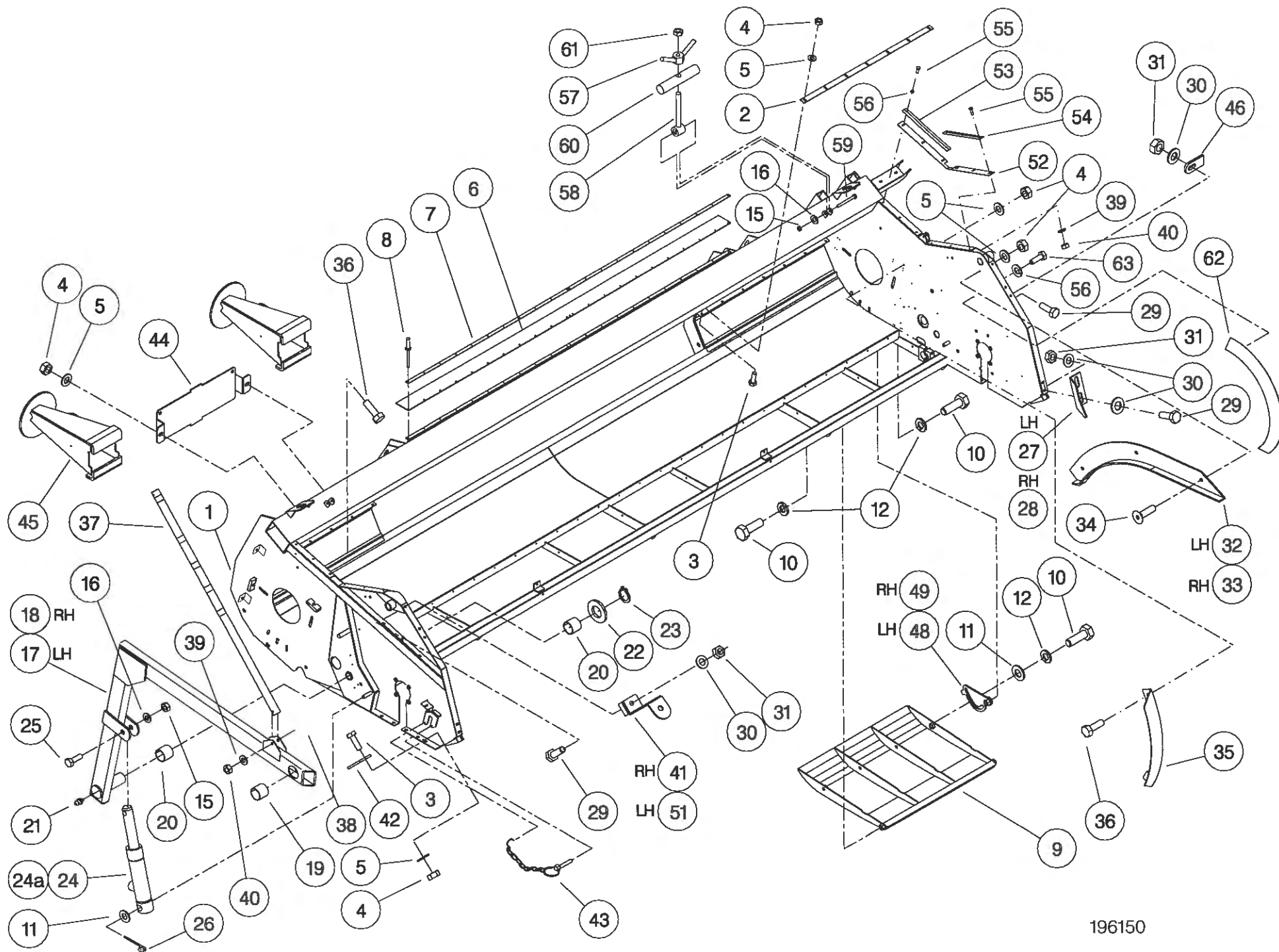
Shelbourne Reynolds Engineering Limited

ASSY NUMBER: 196149 01				ASSY DESCRIPTION: RX ROTOR MTG SUB			
ITEM	PART NO	DESCRIPTION	QTY	ITEM	PART NO	DESCRIPTION	QTY
1	193504 01	ROTOR MTG PLATE R.H	1				
2	193295 01	ROTOR MTG PLATE L.H	1				
3	BRG-3275	BEARING	2				
4	HSS-0238	SETSCREW	8				
5	WSH-0065	WASHER	8				
6	SCW-0515	SCREW	8				
7	WSH-0015	WASHER	20				
8	NUT-0265	NUT	14				
9	BLTA10520	BOLT	6				
10	193220 01	DIVIDING PLATE	2				
11	192876 01	SHIM					
12	192876 02	SHIM					



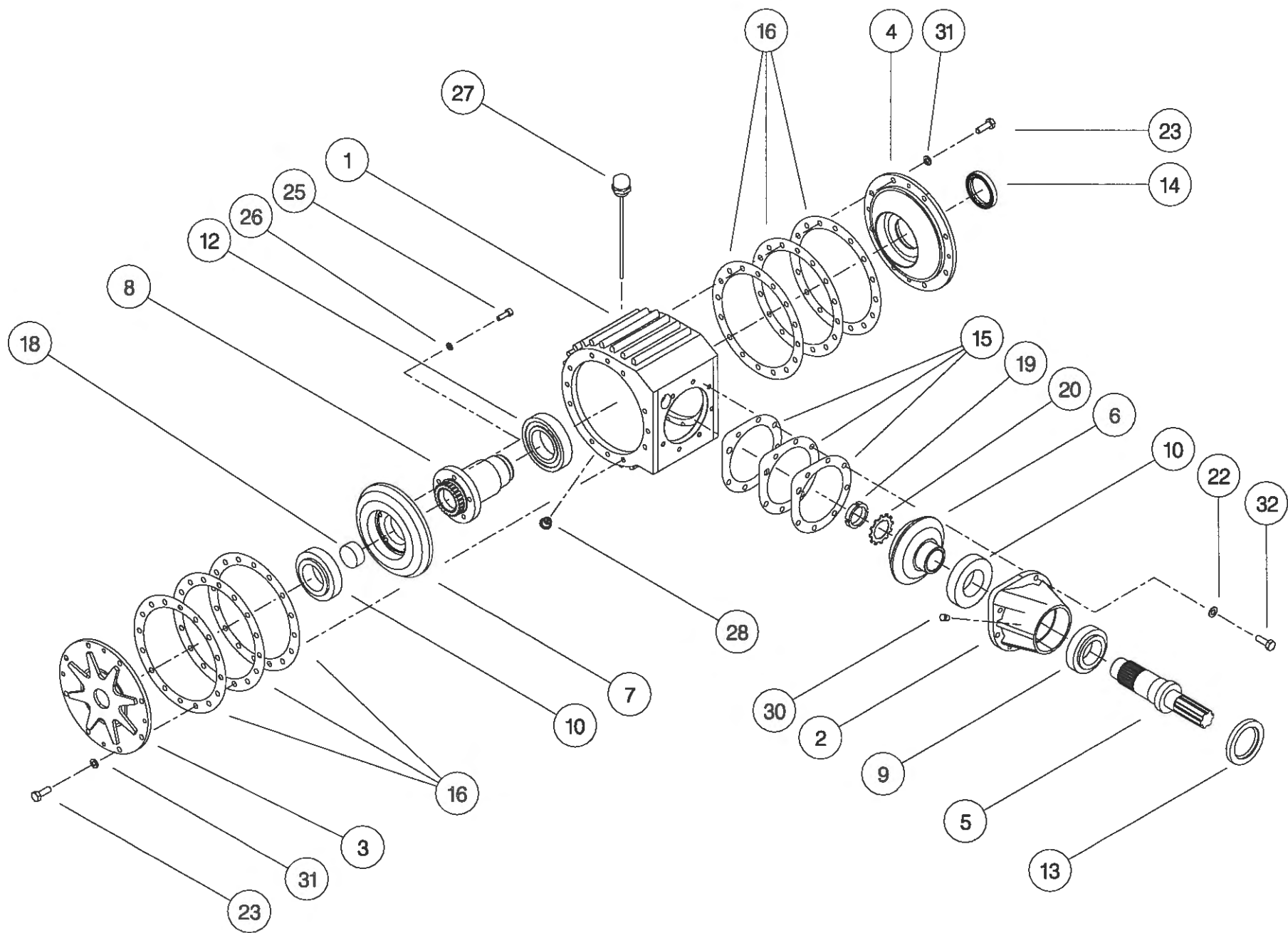
Shelbourne Reynolds Engineering Limited

ASSY NUMBER: 196150 06				ASSY DESCRIPTION: FRAME & PARTS SUB (RX36)			
ITEM	PART NO	DESCRIPTION	QTY	ITEM	PART NO	DESCRIPTION	QTY
1	195053 01	RX36 MAIN FRAME ASSY	1	38	HSS-0092	SETSCREW	1
2	195056 02	STRIPPER PLATE	2	39	WSH-0009	PLAIN WASHER	7
3	BLT-4710	COACH BOLT	10	40	NUT-0260	NYLOC NUT	7
4	NUT-0263	NUT	20	41	193480 01	SUPPORT BRACKET RH	1
5	WSH-0012	WASHER	20	42	192543 01	CROP DIVIDER ADJ.PLATE	2
6	191340 01	RUBBER SEAL	1	43	PIN-01790	LYNCH PIN & CHAIN	2
7	191339 01	CLAMP STRIP	2	44	193221 01	HEADER STAND BRACKET	1
8	POP-0006	POP RIVET	22	45	193222 01	HEADER FRONT STAND	2
9	193219 01	SKID	2	46	192550 01	NOSE ARM STOP PLATE	1
10	HSS-0316	SET SCREW	8	47			
11	WSH-0024	WASHER	4	48	192954 01	SKID ADJUSTER PLATE L.H	2
12	WSH-0070	WASHER	8	49	192954 02	SKID ADJUSTER PLATE R.H	2
13				50			
14				51	193480 02	SUPPORT BRACKET LH	1
15	NUT-0269	NUT	4	52	193231 01	RUBBER SEAL	2
16	WSH-0018	WASHER	4	53	193229 01	SEAL CLAMP	2
17	191259 02	ADJ COWL SUPPORT ARM R.H	1	54	193230 01	SEAL CLAMP	2
18	191259 01	ADJ COWL SUPPORT ARM L.H	1	55	SCW-4960	BUTT.HD.SKT SCREW	12
19	BSH-3030	BUSH	2	56	WSH-0056	SPRING WASHER	12
20	BSH-3070	BUSH	4	57	193244 01	RETAINING NUT	2
21	NIP-0001	GREASE ZERK	2	58	193248 01	RETAINING SCREW	2
22	WSH-1547	WASHER	2	59	BLTA12380	BOLT	2
23	CIR-1150	CIRCLIP	2	60	193251 01	RETAINING BAR	2
24	193506 01	HYDRAULIC RAM	2	61	NUT-0170	PLAIN NUT	2
24a	RMSK00030	SEAL KIT		62	193363 01	ROTOR DEFLECTOR	2
25	HSS-0260	SET SCREW	2	63	HSS-0084	SETSCREW	6
26	PIN-1150	SPLIT PIN	2				
27	192193 01	ADJ COWL STOP L.H	1				
28	192193 02	ADJ COWL STOP R.H	1				
29	HSS-0194	SET SCREW	7				
30	WSH-0015	WASHER	11				
31	NUT-0265	NUT	7				
32	192055 01	RUNNER ASSY L.H	1				
33	192055 02	RUNNER ASSY R.H	1				
34	SCW-1735	SCREW	6				
35	192304 01	AUGER END DEFLECTOR	2				
36	HSS-0140	SET SCREW	6				
37	192494 01	INDICATOR ROD	1				



Shelbourne Reynolds Engineering Limited

ASSY NUMBER:		ASSY DESCRIPTION: BEVEL GEARBOX (1.5:1)					
ITEM	PART NO	DESCRIPTION	QTY	ITEM	PART NO	DESCRIPTION	QTY
1	191715 01	GEARBOX CASING	1				
2	191716 01	INPUT HOUSING	1				
3	191717 01	OUTSIDE END COVER	1				
4	191718 01	INSIDE END COVER	1				
5	191819 01	INPUT SHAFT (28T INVOLUTE)	1				
6	191798 01	BEVEL GEAR 20T (28T INV)	1				
7	191799 01	BEVEL GEAR 30T (25T INV)	1				
8	191800 01	OUTPUT SHAFT (25T INVOLUTE)	1				
9	BRG-7000	BEARING	1				
10	BRG-7020	BEARING	2				
11							
12	BRG-7040	BEARING	1				
13	SEA-0590	ROTARY SHAFT SEAL	1				
14	SEA-0600	ROTARY SHAFT SEAL	1				
15	191812	SHIM PACK (INPUT)	1				
16	191813	SHIM PACK (ENDS)	2				
17							
18	191735 01	SHAFT PLUG	1				
19	NUT-3010	LOCK RING	1				
20	WSH-6010	LOCK WASHER	1				
21							
22	WSH-1301	SHAKEPROOF WASHER	7				
23	HSS-0191	SET SCREW	16				
24							
25	SCW-0139	CAP HEAD SCREW	5				
26	WSH-0058	SPRING WASHER	5				
27	FIT-0254	BREATHER/DIP STICK	1				
28	FIT-0253	MAGNETIC DRAIN PLUG	1				
29							
30	FIT-0223	TAPER PLUG	1				
31	WSH-0061	SPRING WASHER	16				
32	SCW-0190	CAP SOC.HEAD SCREW	7				

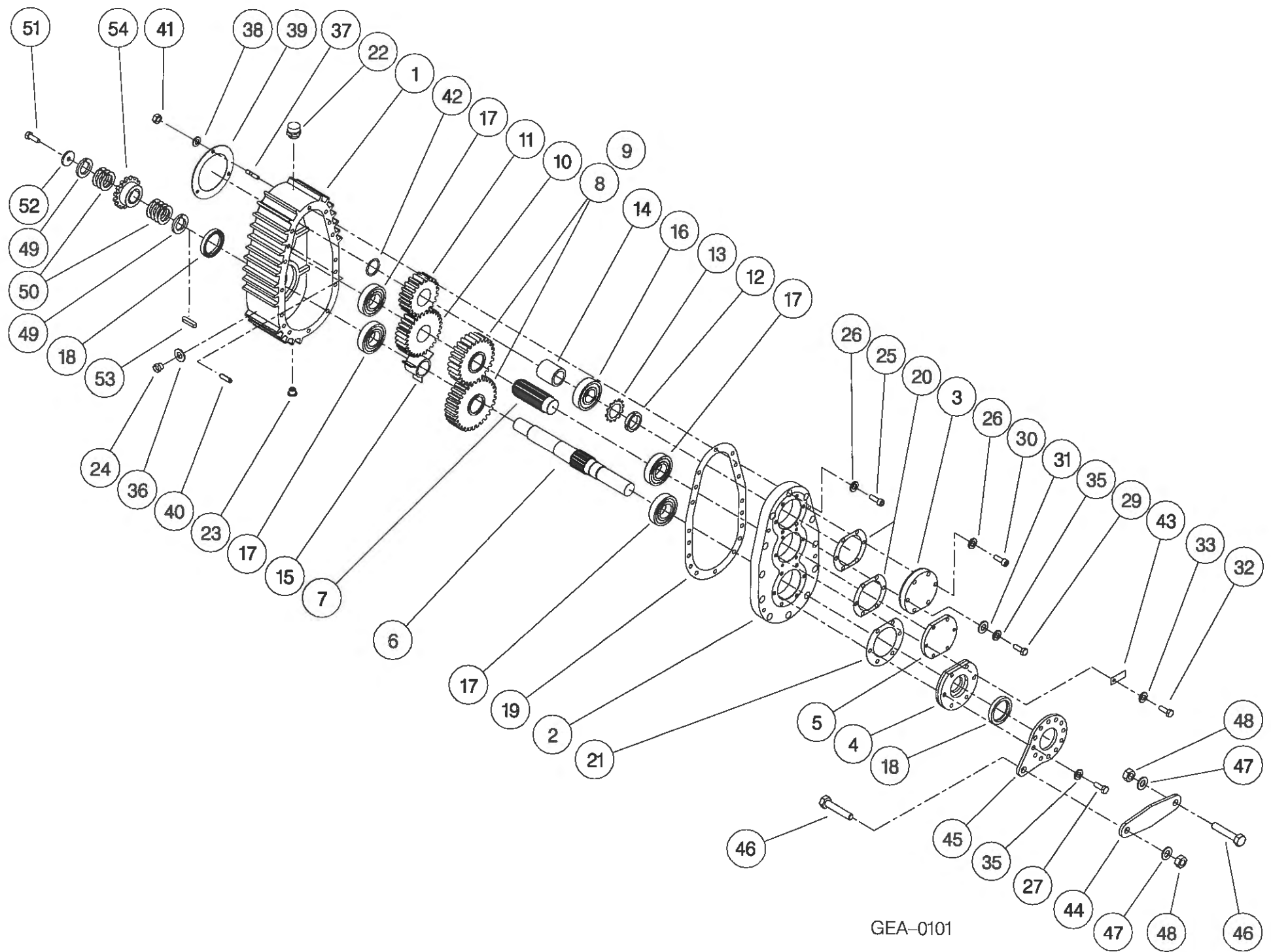


Shelbourne Reynolds Engineering Limited

ASSY NUMBER:		ASSY DESCRIPTION: SHORT DROPBOX FOR RX & CX (1996)					
ITEM	PART NO	DESCRIPTION	QTY	ITEM	PART NO	DESCRIPTION	QTY
1	191723 01	GEARCASE	1				
2	191723 02	LID	1				
3	191696 01	OUTPUT END CAP	1				
4	191694 01	INPUT FLANGE	1				
5	191693 01	END CAP	1				
6	191807 01	INPUT/AUGER OUTPUT SHAFT (28T INVOLUTE)	1				
7	191801 01	INTERMED. SHAFT (28T INV)	1				
8		CHANGE GEAR (SEE DRIVE SUB)					
9		CHANGE GEAR (SEE DRIVE SUB)					
10	191803 01	SPUR GEAR 30T (28T INV)	1				
11	191884 01	SPUR GEAR 20T (28T INV)	1				
12	NUT-3000	LOCK RING	1				
13	WSH-6000	LOCK WASHER	1				
14	191725 01	SPACER	1				
15	191894 01	SPACER	1				
16	BRG-6600	BEARING	1				
17	BRG-5800	BEARING	4				
18	SEA-0610	ROTARY SHAFT SEAL	2				
19	191756 01	GASKET	1				
20	191757	SEAL PACK	2				
21	191758	SEAL PACK	1				
22	FIT-0255	BREATHER	1				
23	FIT-0253	MAGNETIC DRAIN PLUG	1				
24	FITD00005	SIGHT GLASS/SEAL	1				
25	SCW-0196	CAP HEAD SCREW	12				
26	WSH-1301	SHAKEPROOF WASHER	15				
27	HSS-0202	SETSCREW	6				
28							
29	BLTA10290	BOLT	3				
30	SCW-0190	CAP HEAD SCREW	3				
31	WSH-0015	PLAIN WASHER	3				
32	HSS-0145	SET SCREW	6				
33	WSH-1300	SHAKEPROOF WASHER	6				
34							
35	WSH-0061	SPRING WASHER	9				
36							
37	191737 01	STUD	5				

Shelbourne Reynolds Engineering Limited

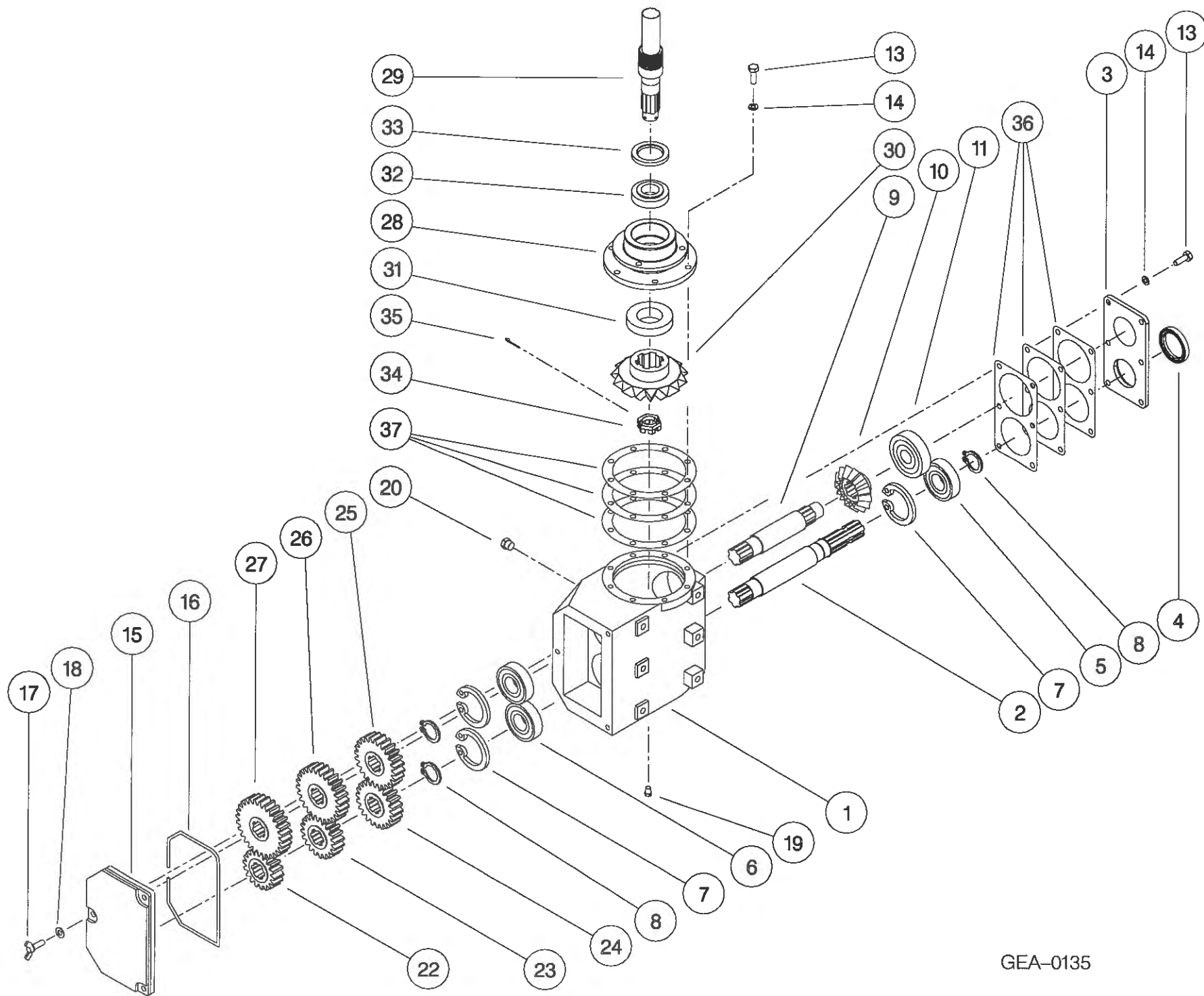
ASSY NUMBER: GEA-0101 CONTINUED				ASSY DESCRIPTION: SHORT DROPBOX FOR RX & CX (1996)			
ITEM	PART NO	DESCRIPTION	QTY	ITEM	PART NO	DESCRIPTION	QTY
38	WSH-0012	PLAIN WASHER	3				
39	191759 01	SEAL	1				
40	191765 01	DOWL	2				
41	NUT-0012	PHILIDAS NUT	5				
42	CIR-4000	SNAP RING CIRCLIP	1				
43	191928 01	IDENTIFICATION TAG	1				
44	193097 01	FIXED LINK	1				
45	191687 01	LINK BRACKET	1				
46	HSS-0316	SET SCREW	2				
47	WSH-0024	WASHER	2				
48	NUT-0271	NUT	2				
49	191692 01	SPACER	2				
50	191692 02	SHIM	7				
51	HSSF10174	SET SCREW	1				
52	190548 01	PLAIN WASHER	1				
53	K1008045	KEY	1				
54		AUGER SPROCKET (SEE DRIVE SUB)					



GEA-0101

Shelbourne Reynolds Engineering Limited

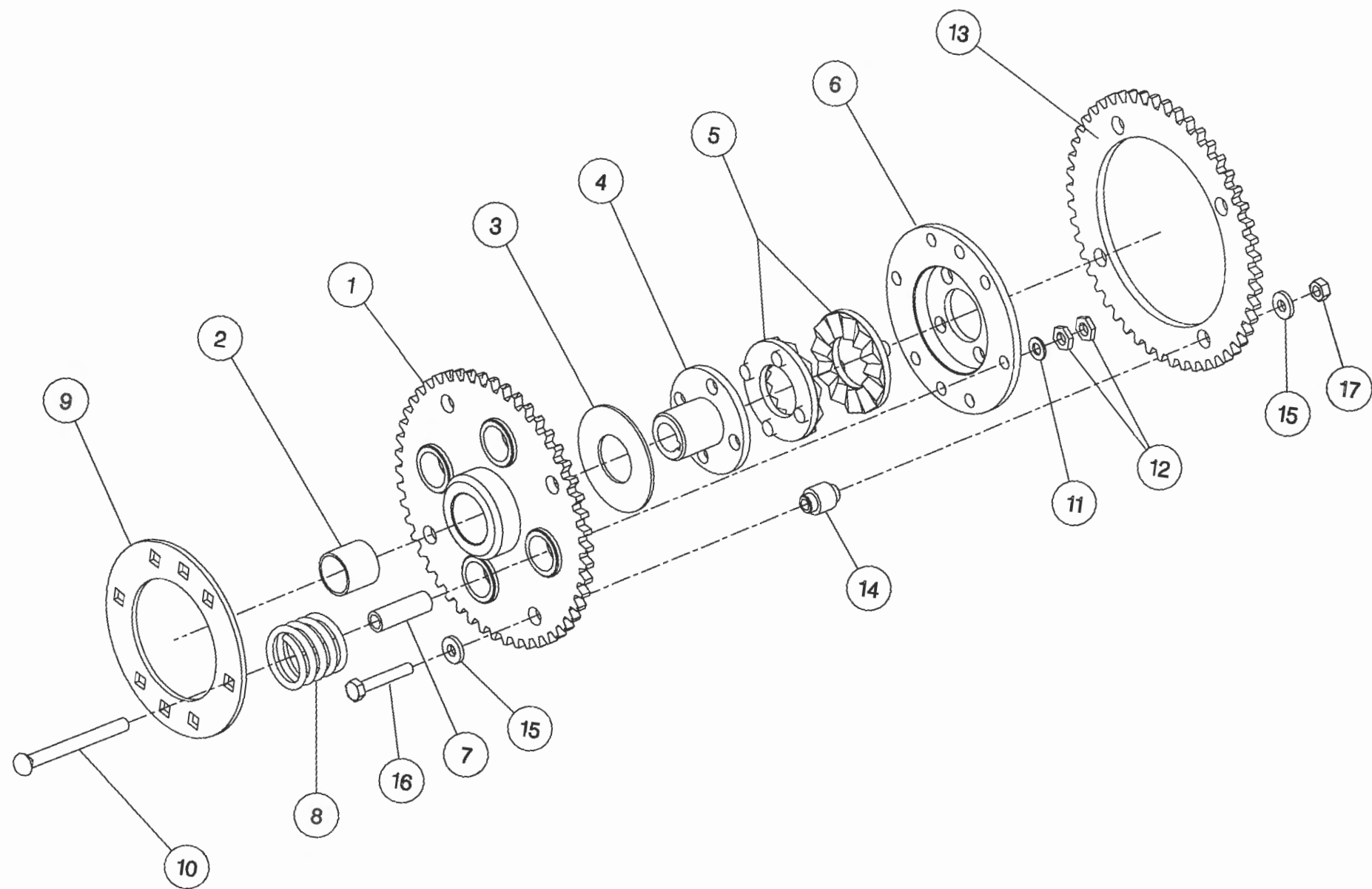
ASSY NUMBER:		ASSY DESCRIPTION: 5 SPEED G.BOX ASSY ALUM/FINNED 1997 (WITH DROP BOX)					
ITEM	PART NO	DESCRIPTION	QTY	ITEM	PART NO	DESCRIPTION	QTY
1	191821 01	GEARBOX CASING	1				
2	191829 01	INPUT SHAFT	1				
3	191825 01	SEAL HOUSING	1				
4	SEA-0550	ROTARY SHAFT SEAL	1				
5	BRG-6600	BEARING	1				
6	BRG-6601	BEARING	2				
7	CIR-3800	CIRCLIP	3				
8	CIR-2700	CIRCLIP	3				
9	191828 01	LAYSHAFT	1				
10	191823 01	BEVEL GEAR (15T)	1				
11	BRG-6800	BEARING	1				
12							
13	HSS-0194	SET SCREW	14				
14	WSH-0061	SPRING WASHER	14				
15	192924 01	REMOVABLE COVER	1				
16	ORA260000	`O' RING SEAL STRIP	0.7				
17	SCW-4760	WING SCREW	3				
18	WSH-1301	SHAKEPROOF WASHER	3				
19	FIT-0223	PLUG	1				
20	FIT-0218	BREATHER	1				
21							
22	191822 18	CHANGE GEAR (18T)	1				
23	191822 20	CHANGE GEAR (20T)	1				
24	191822 22	CHANGE GEAR (22T)	1				
25	191822 24	CHANGE GEAR (24T)	1				
26	191822 26	CHANGE GEAR (26T)	1				
27	191822 28	CHANGE GEAR (28T)	1				
28	191691 01	OUTPUT HOUSING	1				
29	191885 01	OUTPUT SHAFT	1				
30	191824 01	BEVEL GEAR (18T)	1				
31	BRG-6000	BEARING	1				
32	BRG-5700	BEARING	1				
33	SEA-0565	ROTARY SHAFT SEAL	1				
34	191843 01	SLOTTED NUT	1				
35	PIN-1168	SPLIT PIN	1				
36	191830	GASKET SET	1				
37	191831	GASKET SET	1				



GEA-0135

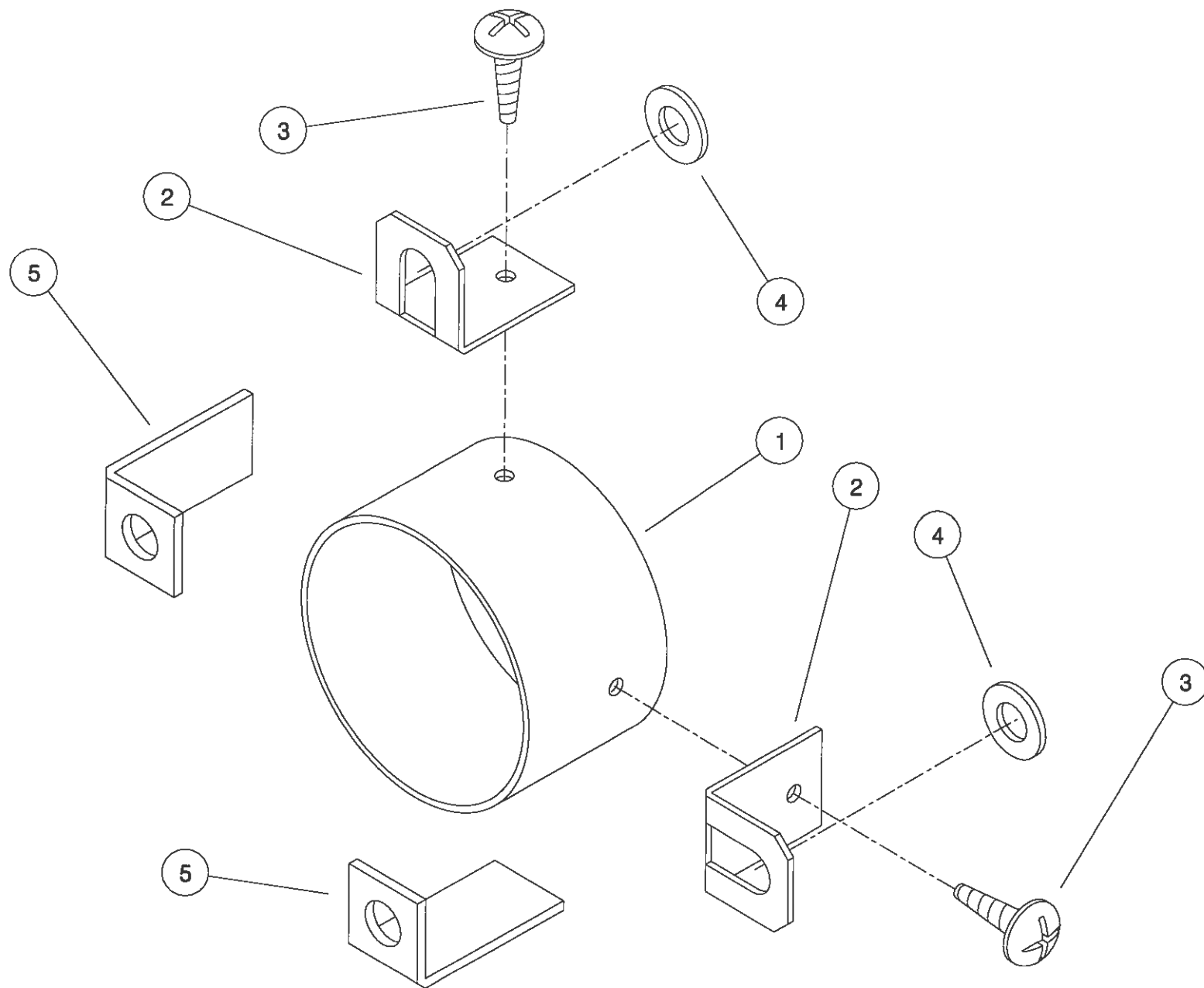
Shelbourne Reynolds Engineering Limited

ASSY NUMBER:		ASSY DESCRIPTION: AUGER DRIVE SPROCKET/CLUTCH ASSY					
ITEM	PART NO	DESCRIPTION	QTY	ITEM	PART NO	DESCRIPTION	QTY
1	192018 01	SPROCKET ASSY 50T	1				
2	BSH-3019	BUSH	1				
3	192008 01	THRUST WASHER	1				
4	192013 01	CLUTCH HUB	1				
5	131005	CLUTCH PLATE	2				
6	192014 01	DRIVE DISC	1				
7	131073 02	SPACER	4				
8	131063	SPRING	4				
9	192009 01	FIXING RING	1				
10	BLTF12570	COACH BOLT	4				
11	WSH-0018	PLAIN WASHER	4				
12	NUT-0170	PLAIN NUT	8				
13	192254 01	SPROCKET 50T	1				
14	192253 02	SPACER	4				
15	190119 11	WASHER	8				
16	BLTA10440	BOLT	4				
17	NUT-0265	NYLOC NUT	4				



Shelbourne Reynolds Engineering Limited

ASSY NUMBER: KIT-00525				ASSY DESCRIPTION: PTO END GUARD			
ITEM	PART NO	DESCRIPTION	QTY	ITEM	PART NO	DESCRIPTION	QTY
1	192985 06	GUARD TUBE	1				
2	192992 01	GUARD SECURING BRACKET	2				
3	SCW-5104	SCREW	2				
4	WSH-0015	WASHER	2				
5	191763 01	PTO BRACKET	2				

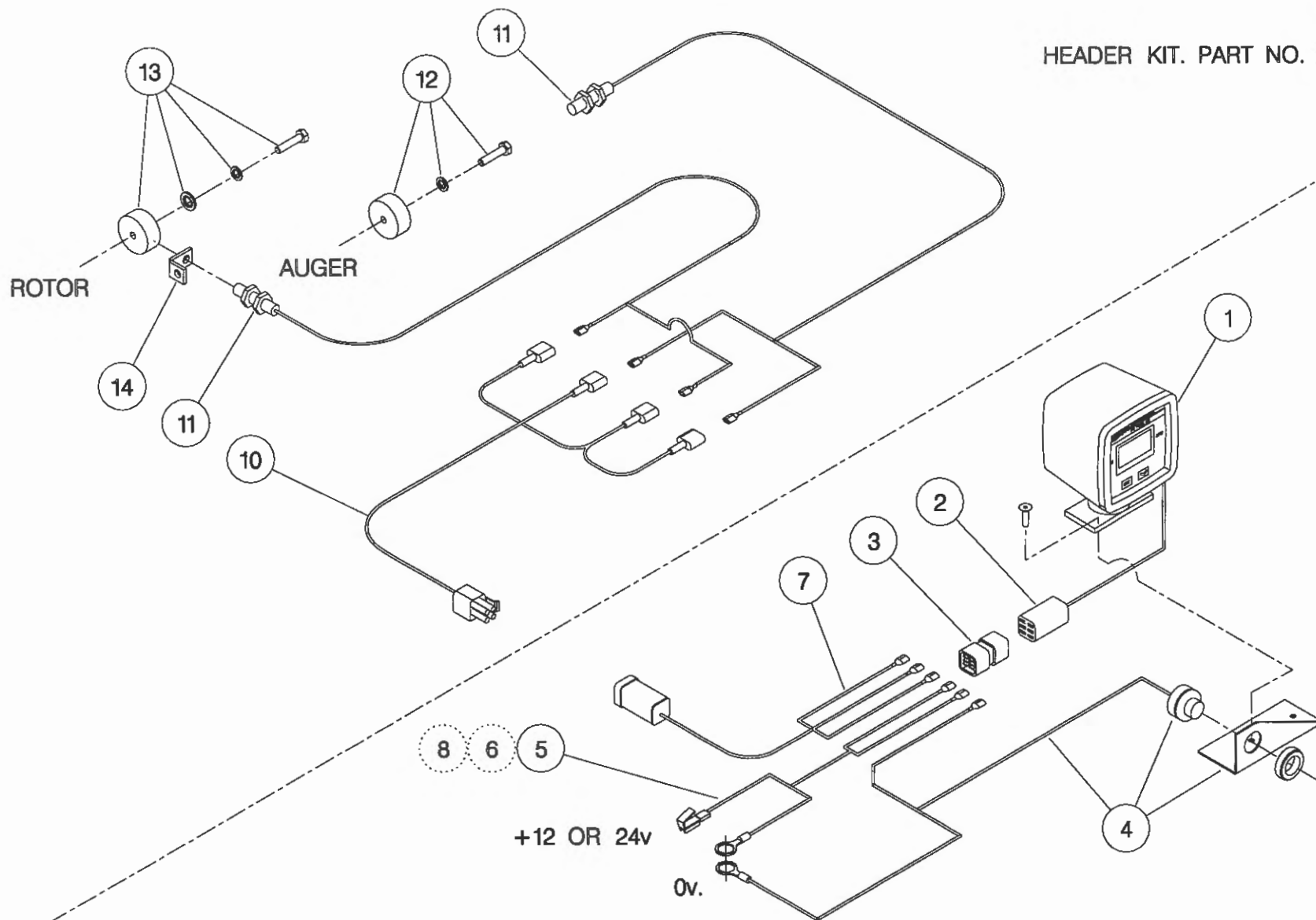


KIT-00525

Shelbourne Reynolds Engineering Limited

ASSY NUMBER: RDS-0001/RDS-0005				ASSY DESCRIPTION: TACHO KIT			
ITEM	PART NO	DESCRIPTION	QTY	ITEM	PART NO	DESCRIPTION	QTY
1	RDS-0010	TACHO HEAD COMPLETE	1	13	RDS-0020	MAGNET CARRIER,	1
2	RDS-0011	TACHO HEAD PLUG & ARMS	1			SET SCREW,	1
3	RDS-0012	HARTING CONNECTOR & STICKER	1 1			PENNY WASHER & SPRING WASHER	1 1
4	RDS-0013	AUDIBLE ALARM, FIXING BRACKET & SELF TAP.SCREWS	1 1 2	14	RDS-0021	ROTOR SENSOR BRACKET	1
5	RDS-0014	POWER CONNECTION LEAD	1				
6	FUS-0022	FUSE	1				
7	RDS-0015	COMBINE LEAD	1				
8	RDS-0016	24V-12V CONVERTER KIT (NOT INCLUDED IN RDS-0001)	1				
9							
10	RDS-0017	HEADER LEAD	1				
11	RDS-0018	SHAFT SENSOR	2				
12	RDS-0019	MAGNET, TAPTITE BOLT & FIBRE WASHER	1 1 1				

HEADER KIT. PART NO. RDS - 0005



COMBINE KIT. PART NO. RDS - 0001

NOTE ;

ITEM 6 IS USED IF POWER SUPPLY IS NOT FUSED.

ITEM 8 IS USED IF POWER SUPPLY IS 24V, -VE EARTH. (NOT INCLUDED IN RDS - 0001).

ITEM 4 (ALARM) IS BUILT INTO ITEM 1 (TACHO HEAD) ON LATER MODELS.

NUMERIC PARTS LIST

PART No.	PAGE	PART No.	PAGE	PART No.	PAGE
127075 12	26	191798 01	32	192263 01	6
127075 16	26	191799 01	32	192265 01	6
131005	40	191800 01	32	192266 01	14
131014 01	6	191801 01	34	192273 01	14
	22	191803 01	34	192304 01	30
131063	40	191807 01	34	192307 01	12
131073 02	40	191812	32	192310 01	12
190060 06	6	191813	32	192311 05	12
	22	191819 01	32	192344 01	6
190119 04	22	191821 01	38	192354 01	14
190119 05	4	191822 18	38	192355 01	14
190119 11	40	191822 20	38	192494 01	30
190361 01	4	191822 22	38	192524 12	4
190548 01	34	191822 24	38	192533 01	8
190702 04	26	191822 26	38	192533 02	8
191040 01	6	191822 28	38	192537 01	8
	22	191823 01	38	192537 02	8
191259 01	30	191824 01	38	192543 01	30
191259 02	30	191825 01	38	192550 01	30
191339 01	30	191828 01	38	192555 01	26
191340 01	30	191829 01	38	192570 01	26
191355 01	26	191830	38	192636 01	10
191359 01	26	191831	38	192636 06	10
191642 01	4	191843 01	38	192679 01	20
191652 01	22	191862 01	8	192718 01	4
191680 01	22	191884 01	34		16
191687 01	34	191885 01	38	192812 01	16
191691 02	38	191894 01	34	192813 01	16
191692 01	34	191928 01	34	192876 01	28
191692 02	34	191940 01	26	192876 02	28
191696 02	34	191981 01	4	192890 03	20
191715 01	32	191982 01	26	192892 01	20
191716 01	32	191983 01	26	192892 02	20
191717 01	32	192008 01	40	192892 03	20
191718 01	32	192009 01	40	192897 01	20
191723 01	34	192011 01	12	192899 01	20
191723 02	34	192013 01	40	192924 01	38
191725 01	34	192014 01	40	192953 01	26
191735 01	32	192018 01	40	192954 01	30
191737 01	34	192037 01	4	192954 02	30
191756 01	34	192038 01	4	192959 01	20
191757	34	192055 01	30	192969 01	14
191759 01	34	192055 02	30	192970 01	14
191763 01	42	192091 01	22	192970 02	14
191765 01	34	192193 01	30	192985 06	42
191770 01	8	192193 02	30	192992 01	42
191774 01	6	192223 11	12	193097 01	34
	22	192253 02	40	193118 01	20
191777 01	6	192254 01	40	193118 02	20
	22	192258 01	6	193203 01	12

NUMERIC PARTS LIST

<u>PART No.</u>	<u>PAGE</u>	<u>PART No.</u>	<u>PAGE</u>	<u>PART No.</u>	<u>PAGE</u>
193219 01	30	BLTA08470	26	FIT-0218	38
193220 01	28	BLTA08500	14	FIT-0223	32
193221 01	30	BLTA08530	14		38
193222 01	30	BLTA10290	16	FIT-0253	32
193229 01	30		34		34
193230 01	30	BLTA10350	14	FIT-0254	32
193231 01	30	BLTA10440	40	FIT-0255	34
193244 01	30	BLTA10520	28	FITD00005	34
193248 01	30	BLTA10530	14	GEA-0095	22
193251 01	30	BLTA12290	22	GEA-0102	22
193295 01	28	BLTA12380	30	GEA-0135	22
193297 01	26	BLTF12570	40	GSTA14406	16
193324 02	14	BRG-0218	12	HHBC16610	24
193338 01	26	BRG-0240	10	HHBC41610	24
193346 01	26	BRG-1994	6	HPPD07100	24
193348 01	18	BRG-1995	6	HSS-0084	14
193348 02	18		14		26
193363 01	30		22		30
193392 01	26	BRG-22500	6	HSS-0086	6
193393 01	26	BRG-3275	28		24
193395 01	26	BRG-5700	38	HSS-0092	30
193478 01	26	BRG-5800	34	HSS-0140	4
193480 01	30	BRG-6000	38		12
193480 02	30	BRG-6600	34		26
193504 01	28		38		30
193506 01	30	BRG-6601	38	HSS-0145	26
194364 01	26	BRG-6800	38	HSS-0155	8
195053 01	30	BRG-7000	32	HSS-0188	34
195056 02	30	BRG-7020	32	HSS-0191	8
195059 01	12	BRG-7040	32		32
195061 01	14	BRG-7080	12	HSS-0194	22
195062 01	16	BSH-1530	14		30
195064 01	4		22		38
195065 01	14	BSH-3030	16	HSS-0202	34
195104 01	26		30	HSS-0238	22
200035 03	10	BSH-3070	30		28
200038 01	10	BSHZ02553	6	HSS-0241	10
200120 02	10	CHN-0145	26	HSS-0260	30
AUG-01000	12	CHN-01682	6	HSS-0265	14
AUG-01500	12	CIR-0470	6	HSS-0315	14
AUG-02000	12		22	HSS-0316	30
AUG-02500	12	CIR-1125	6		34
AUG-03000	12	CIR-1150	30	HSS-0318	6
BLT-2316	6	CIR-2700	38	HSS-0330	22
BLT-3745	10	CIR-3800	38	HSSA10680	14
BLT-3790	10	CIR-4000	34	HSSF08174	20
BLT-4710	30	CLP-01012	24	HSSF10174	34
BLTA06320	14	EDS-11400	26	HSSF12204	12
BLTA06470	14	EDS-11600	16	HSSG10204	20
BLTA07320	26	FIT-0213	24	HSSG12174	22

NUMERIC PARTS LIST

PART No.	PAGE	PART No.	PAGE	PART No.	PAGE
K0807035	6	POP-0006	26	WSH-0015	10
K0807050	10	PSP-01201	14		12
K0807060	10	PSP-01800	14		14
K1008045	34	PTO-09011	22		16
KIT-00116	10	RCL-0015	26		22
KIT-00525	22	RCXPACK5	2		28
LTC-00040	26	RX36FB1	2		30
NIP-0001	16	RX36FB2	2		34
	30	RX36FB3	2		42
NUT-0012	34	RX36FB4	2	WSH-0018	6
NUT-0162	26	SCCA10412	12		10
NUT-0170	10	SCW-0139	32		14
	30	SCW-0190	32		22
	40		34		30
NUT-0260	6	SCW-0196	34		40
	12	SCW-0515	28	WSH-0024	6
	14	SCW-1735	30		14
	24	SCW-4535	10		22
	26	SCW-4700	26		30
	30	SCW-4760	38		34
NUT-0263	14	SCW-4959	12	WSH-0030	10
	26	SCW-4960	12	WSH-0056	12
	30		30		14
NUT-0265	8	SCW-5104	42		26
	10	SCW-5180	20		30
	12		24	WSH-0058	4
	14	SEA-0550	38		8
	16	SEA-0565	38		12
	22	SEA-0590	32		26
	28	SEA-0600	32		32
	30	SEA-0610	34	WSH-0061	14
	40	SPGA32221	14		16
NUT-0269	6	TEXT	34		32
	10		34		34
	14		34		38
	22	TNF-0010	26	WSH-0065	22
	30	TNF-0011	26		28
NUT-0271	6	TNF-0012	26	WSH-0070	6
	22	WSH-0009	6		14
	34		12		30
NUT-0580	10		14	WSH-1034	20
NUT-3000	34		24	WSH-1038	14
NUT-3010	32		26		26
ORA260000	38		30	WSH-1301	32
PIN-01790	30	WSH-0012	12		34
PIN-1150	10		14		38
	30		26	WSH-1547	30
PIN-1168	38		30	WSH-6000	34
POP-0006	4		34	WSH-6010	32
	30	WSH-0015	8		