

# *RX & CX Shelbourne Header* (1996)

**ADAPTOR PLATE & COMBINE FITTINGS**

**PARTS MANUAL**

**DEUTZ-ALLIS (GLENER)**

*Shelbourne*  
**REYNOLDS**

Shelbourne Reynolds Engineering Ltd  
Stanton  
Bury St Edmunds  
Suffolk IP31 2AR  
England

Telephone: 01359 250415  
Fax. No: 01359 250464

(Stores direct 01359 251231)  
(Stores direct 01359 252031)



THE QUEEN'S AWARD FOR  
TECHNOLOGICAL ACHIEVEMENT



THE QUEEN'S AWARD FOR  
EXPORT ACHIEVEMENT



## **DEUTZ ALLIS(GLEANER) PARTS MANUAL**

### **ADAPTOR PLATE**

- |    |            |                                      |
|----|------------|--------------------------------------|
| 1. | 196517 16k | ADAPTOR PLATE ASSY-DEUTZ ALLIS       |
| 2. | 196517 29K | ADAPTOR PLATE ASSY-AGCO              |
| 3. | 196517 31K | ADAPTOR PLATE ASSY-GLEANER (R65 &75) |

### **DRIVE OPTION**

- |    |            |                                     |
|----|------------|-------------------------------------|
| 1. | 196534 162 | DRIVE KIT-DEUTZ ALLIS RX 3.6 MT     |
| 2. | 196534 165 | DRIVE KIT-DEUTZ ALLIS RX 5.4 MT     |
| 3. | 196534 166 | DRIVE KIT-DEUTZ ALLIS RX 6.0 MT     |
| 4. | 196534 168 | DRIVE KIT-DEUTZ ALLIS RX 6.6-8.4 MT |

### **HYDRAULIC KIT**

- |    |           |                     |
|----|-----------|---------------------|
| 1. | KIT-01720 | HYDRAULIC CONNECTOR |
|----|-----------|---------------------|

### **KIT OPTION**

- |    |           |                                |
|----|-----------|--------------------------------|
| 1. | KIT-00809 | STRAW DEFLECTOR KIT            |
| 2. | KIT-00914 | R70 CONCAVE KIT FOR RICE       |
| 3. | KIT-00965 | AUGER FLIGHT EXTENSIONS KIT    |
| 4. | KIT-00970 | RX PROTECTION PANS ALL WIDTHS) |



*RX & CX Shelbourne Header*

**ADAPTOR PLATES**

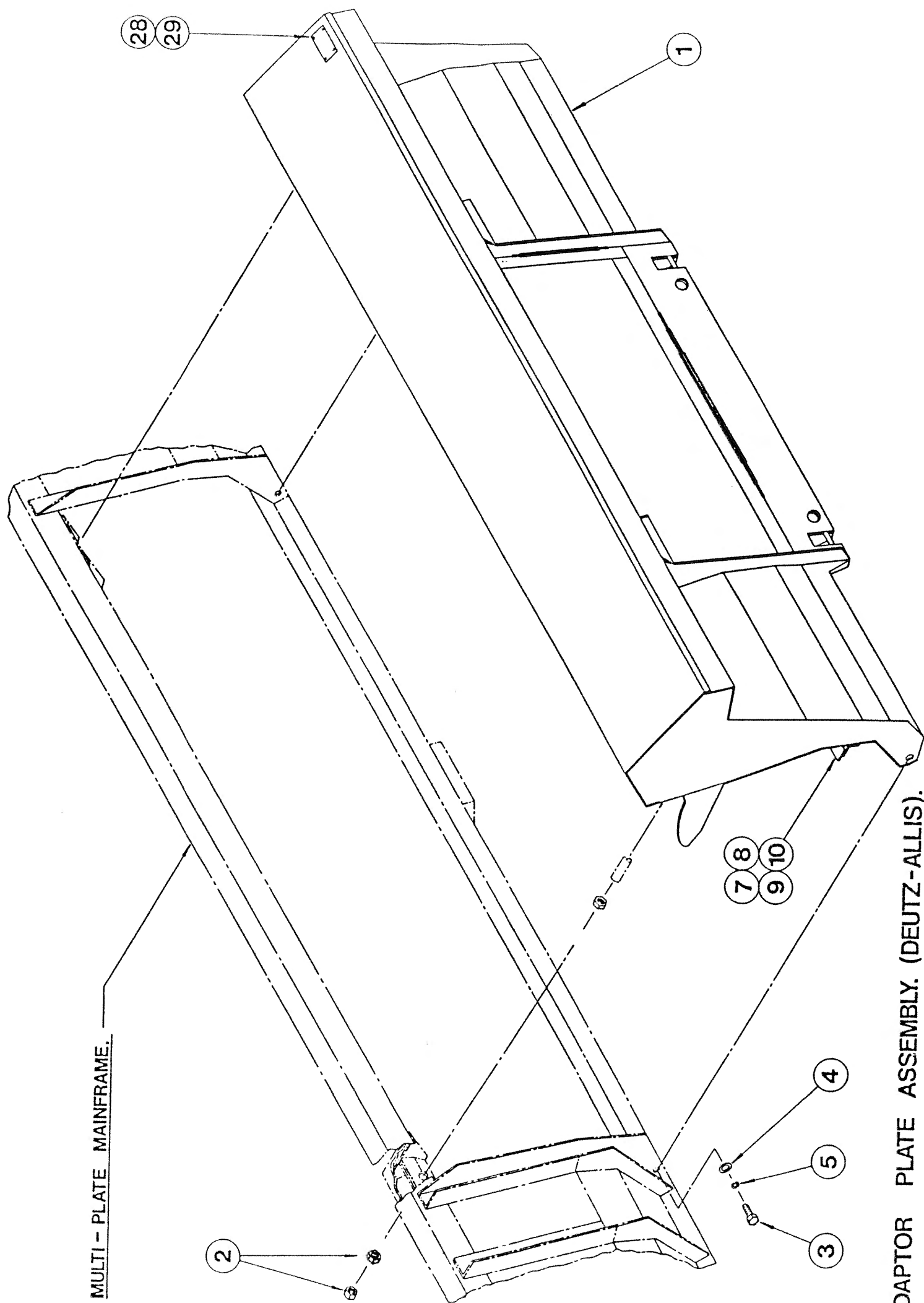


***Shelbourne Reynolds Engineering Limited***

ASSY NUMBER: 196517 16K				ASSY DESCRIPTION: ADAPTOR PLATE ASSY DEUTZ-ALLIS			
ITEM	PART NO	DESCRIPTION	QTY	ITEM	PART NO	DESCRIPTION	QTY
	KIT-00611	ADAPTOR PLATE SUB	1				

**Shelbourne Reynolds Engineering Limited**

ASSY NUMBER:		KIT-00611		SUB ASSY DESCRIPTION: ADAPTOR PLATE DEUTZ-ALLIS (FROM 196517 16)			
ITEM	PART NO	DESCRIPTION	QTY	ITEM	PART NO	DESCRIPTION	QTY
1	191753 01	FRAME WELD ASSY	1				
2	NUT-0190	PLAIN NUT (M24)	6				
3	HSS-0315	SET SCREW (M16x35)	2				
4	WSH-0024	PLAIN WASHER (M16)	2				
5	WSH-0070	SPRING WASHER (M16)	2				
6							
7	191185 02	SCRAPER	2				
8	BLT-4710	COACH BOLT (M8x20)	6				
9	NUT-0263	NYLOC NUT (M8)	6				
10	WSH-0012	PLAIN WASHER (8mm)	6				
11							
12							
13							
28	POP-0006	POP RIVET (3/16"x1/2") (UPTO 2009)	4				
29	134024 05	IDENTIFICATION PLATE (UPTO 2009)	1				



MULTI - PLATE MAINFRAME.

ADAPTOR PLATE ASSEMBLY. (DEUTZ-ALLIS).

**Shelbourne Reynolds Engineering Limited**

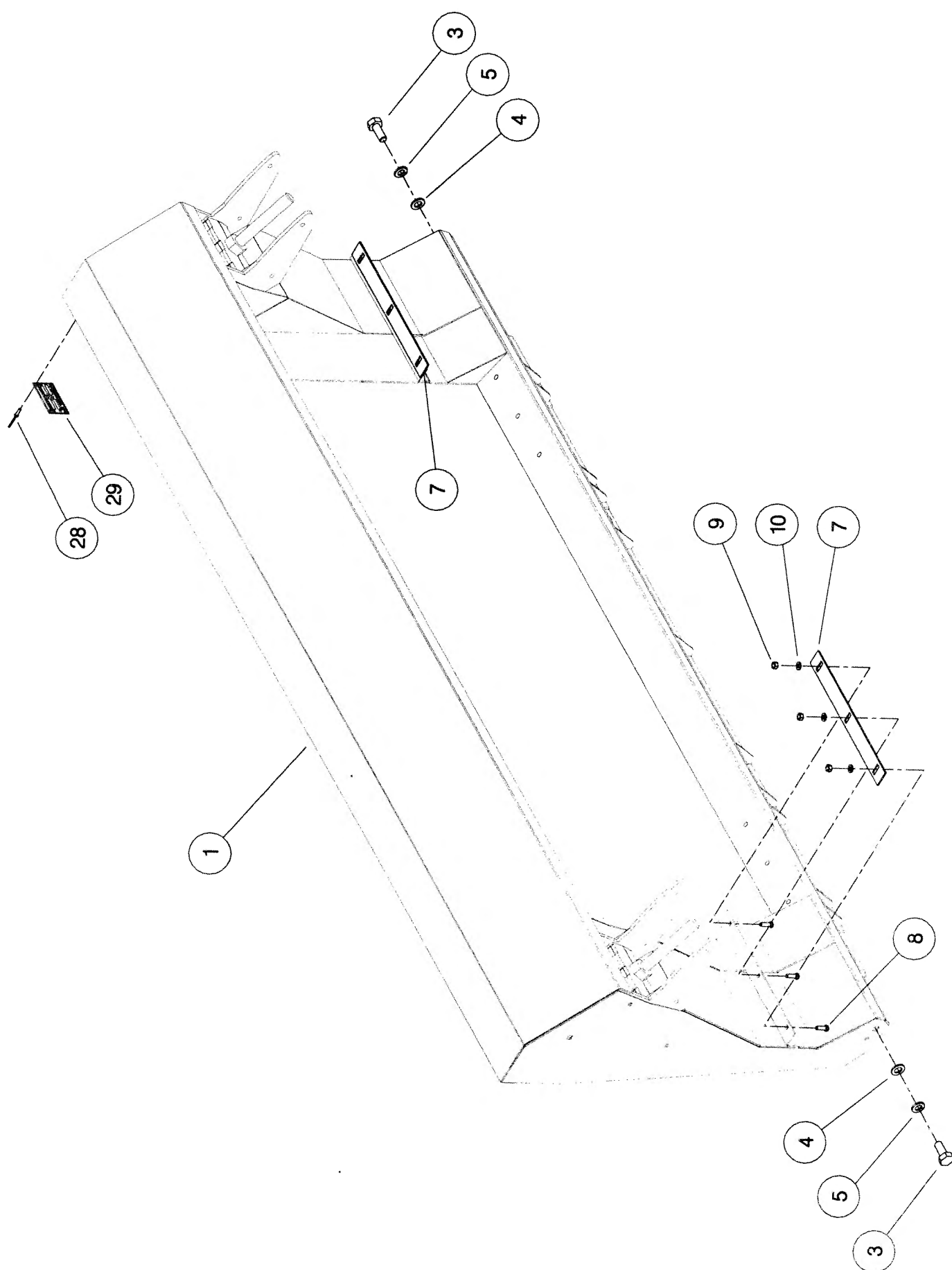
ASSY NUMBER: 196517 29K				ASSY DESCRIPTION: ADAPT.PLT.ASSY AGCO (NON LATERAL TILT MODELS MUST HAVE LARGE HORNS)			
ITEM	PART NO	DESCRIPTION	QTY	ITEM	PART NO	DESCRIPTION	QTY
	KIT-00625	ADAPTOR PLATE SUB	1				

**Shelbourne Reynolds Engineering Limited**

ASSY NUMBER:		196517 31K		ASSY DESCRIPTION: ADAPT.PLT.ASSY GLEANER (R65 & 75))			
(NON LATERAL TILIT MODELS MUST HAVE LARGE HORNS)							
ITEM	PART NO	DESCRIPTION	QTY	ITEM	PART NO	DESCRIPTION	QTY
	KIT-00625	ADAPTOR PLATE SUB	1				
	KIT-00813	FILL IN KIT	1				

**Shelbourne Reynolds Engineering Limited**

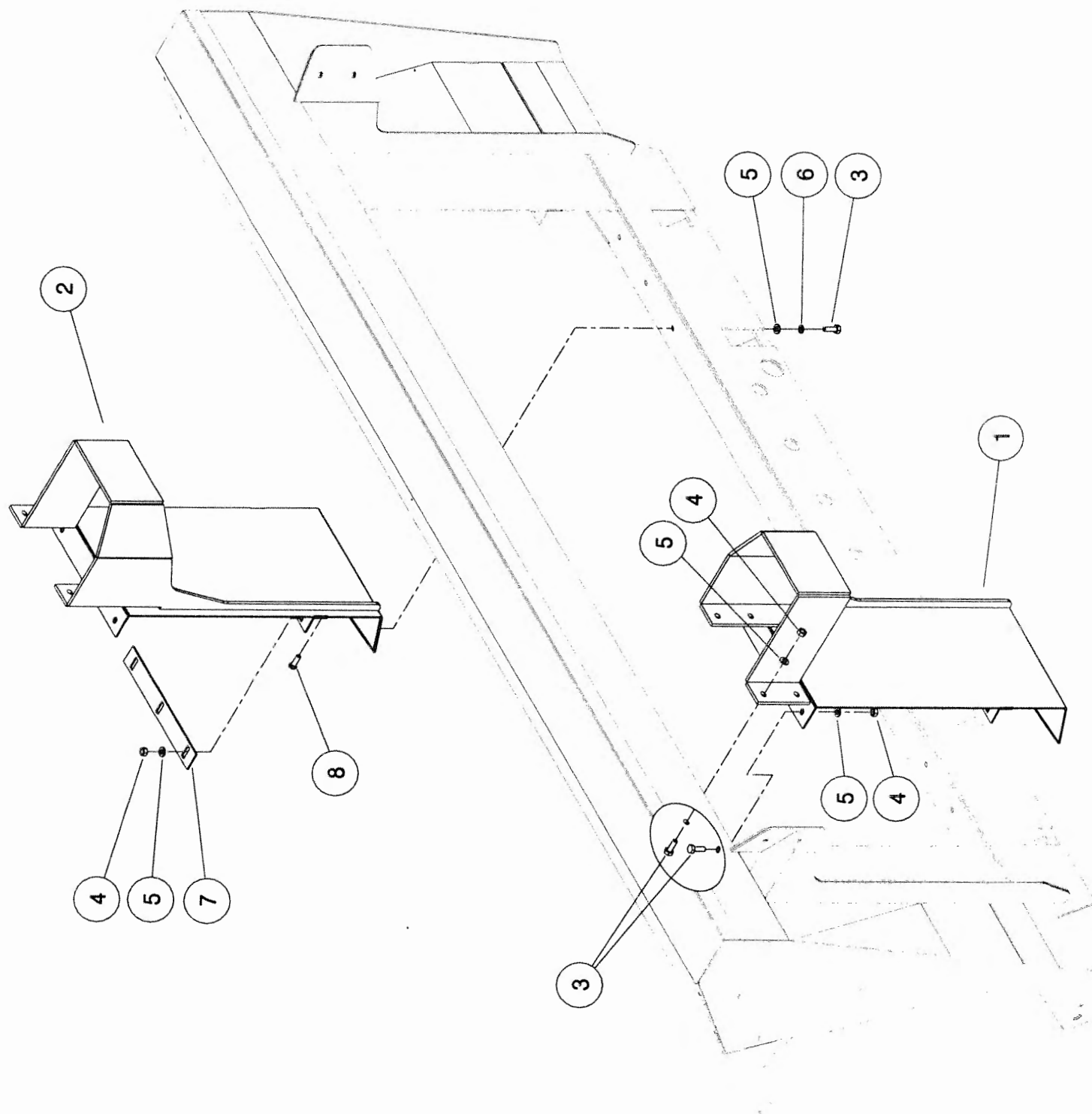
ASSY NUMBER:		KIT-00625		SUB ASSY DESCRIPTION: ADAPTOR PLATE AGCO (R/CX)			
ITEM	PART NO	DESCRIPTION	QTY	ITEM	PART NO	DESCRIPTION	QTY
1	197682 01	FRAME WELD ASSY	1				
2							
3	HSS-0315	SET SCREW	2				
4	WSH-0024	PLAIN WASHER	2				
5	WSH-0070	SPRING WASHER	2				
6							
7	197684 01	SCRAPER	2				
8	BLT-4710	COACH BOLT	6				
9	NUT-0263	NYLOC NUT	6				
10	WSH-0012	PLAIN WASHER	6				
11							
12							
13							
14							
15							
16							
17							
18							
19							
20							
21							
22							
23							
24							
25							
26							
27							
28	POP-0006	POP RIVET (UPTO 2009)	4				
29	194565 01	IDENTIFICATION PLATE (UPTO 2009)	1				



KIT-00625  
KIT-00643

**Shelbourne Reynolds Engineering Limited**

ASSY NUMBER: KIT-00813				SUB ASSY DESCRIPTION: FILL IN KIT GLEANER (R/Cx)			
ITEM	PART NO	DESCRIPTION	QTY	ITEM	PART NO	DESCRIPTION	QTY
1	197687 01	FILL IN PLATE ASSY LH	1				
2	197687 02	FILL IN PLATE ASSY RH	1				
3	HSS-0145	BOLT	14				
4	NUT-0263	NYLOC NUT	14				
5	WSH-0012	PLAIN WASHER	20				
6	WSH-0058	SPRING WASHER	6				
7	197664 01	SCRAPER PLATE	2				
8	BLT-4710	COACH BOLT	6				





## *RX & CX Shelbourne Header*

DRIVE KITS



**Shelbourne Reynolds Engineering Limited**

ASSY NUMBER: 196534 162				ASSY DESCRIPTION: DRIVE KIT 3.6M DEUTZ-ALLIS (ALL)			
ITEM	PART NO	DESCRIPTION	QTY	ITEM	PART NO	DESCRIPTION	QTY
1	191804 27	SELECT GEAR 27T	1				
2	191804 29	SELECT GEAR 29T	1				
3	PTO-05011	FLEX POWER SHAFT	1				
4	191116 08	AUGER SPROCKET	1				
5	CHN-01620	CHAIN	107				
6	CHN-01600	JOINING LINK	1				
7	KIT-00931	PTO SUPPORT KIT	1				

**Shelbourne Reynolds Engineering Limited**

ASSY NUMBER: 196534 165				ASSY DESCRIPTION: DRIVE KIT 5.4M DEUTZ-ALLIS (ALL)			
ITEM	PART NO	DESCRIPTION	QTY	ITEM	PART NO	DESCRIPTION	QTY
1	191804 27	SELECT GEAR 27T	1				
2	191804 29	SELECT GEAR 29T	1				
3	PTO-17012	FLEX POWER SHAFT	1				
4	192768 16	AUGER SPROCKET	1				
5	CHN-01920	CHAIN	93				
6	CHN-01901	JOINING	1				
7	KIT-00931	PTO SUPPORT KIT	1				

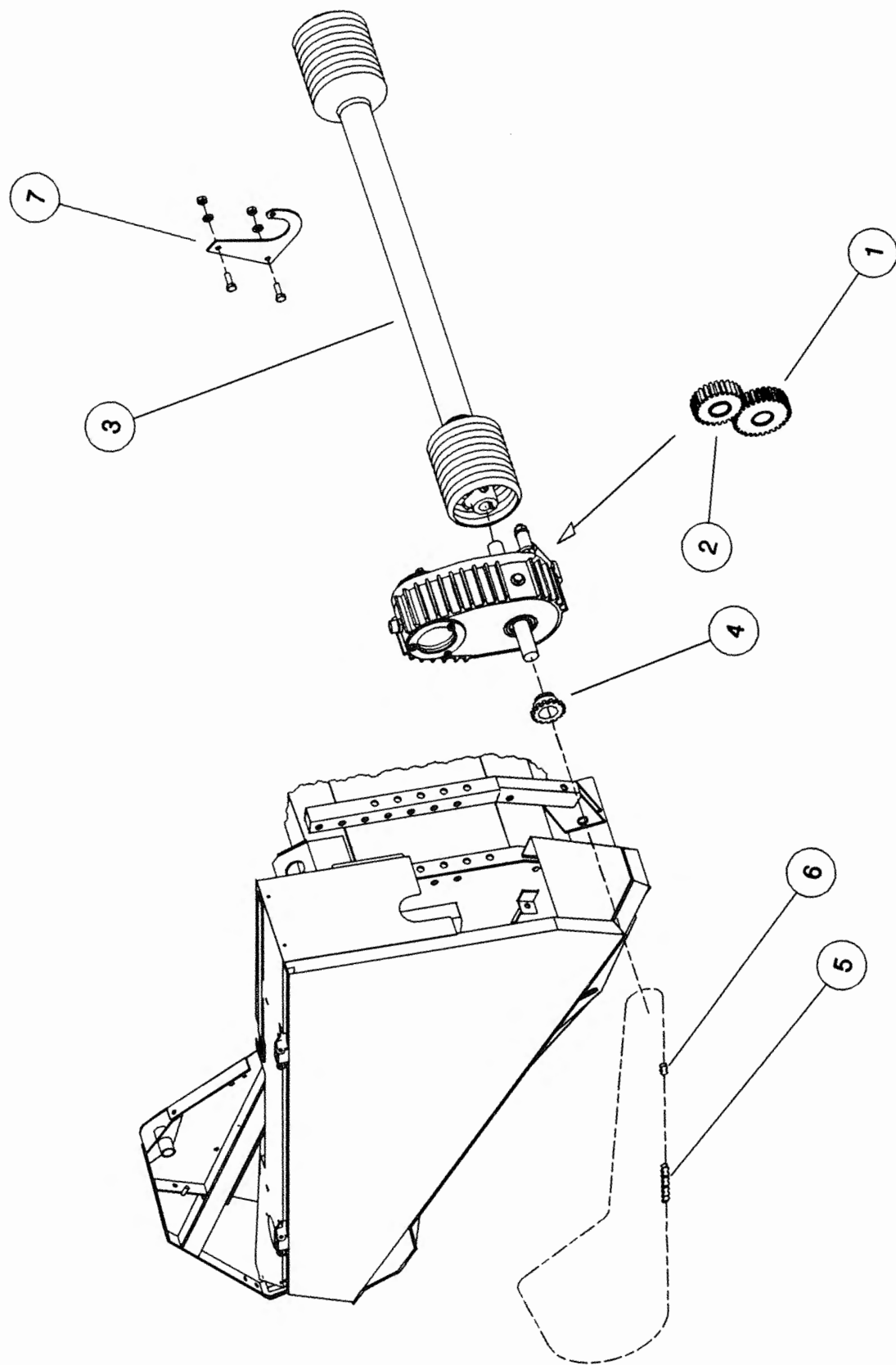
**Shelbourne Reynolds Engineering Limited**

ASSY NUMBER: 196534 166				ASSY DESCRIPTION: DRIVE KIT 6.0M DEUTZ-ALLIS (ALL)			
ITEM	PART NO	DESCRIPTION	QTY	ITEM	PART NO	DESCRIPTION	QTY
1	191804 27	SELECT GEAR 27T (28t inv)	1				
2	191804 29	SELECT GEAR 29T (28t inv)	1				
3	PTO-17008	FLEX POWER SHAFT	1				
4	192768 16	AUGER SPROCKET	1				
5	CHN-01920	CHAIN	93				
6	CHN-01901	JOINING LINK	1				
7	KIT-00931	PTO SUPPORT KIT	1				

*Shelbourne Reynolds Engineering Limited*

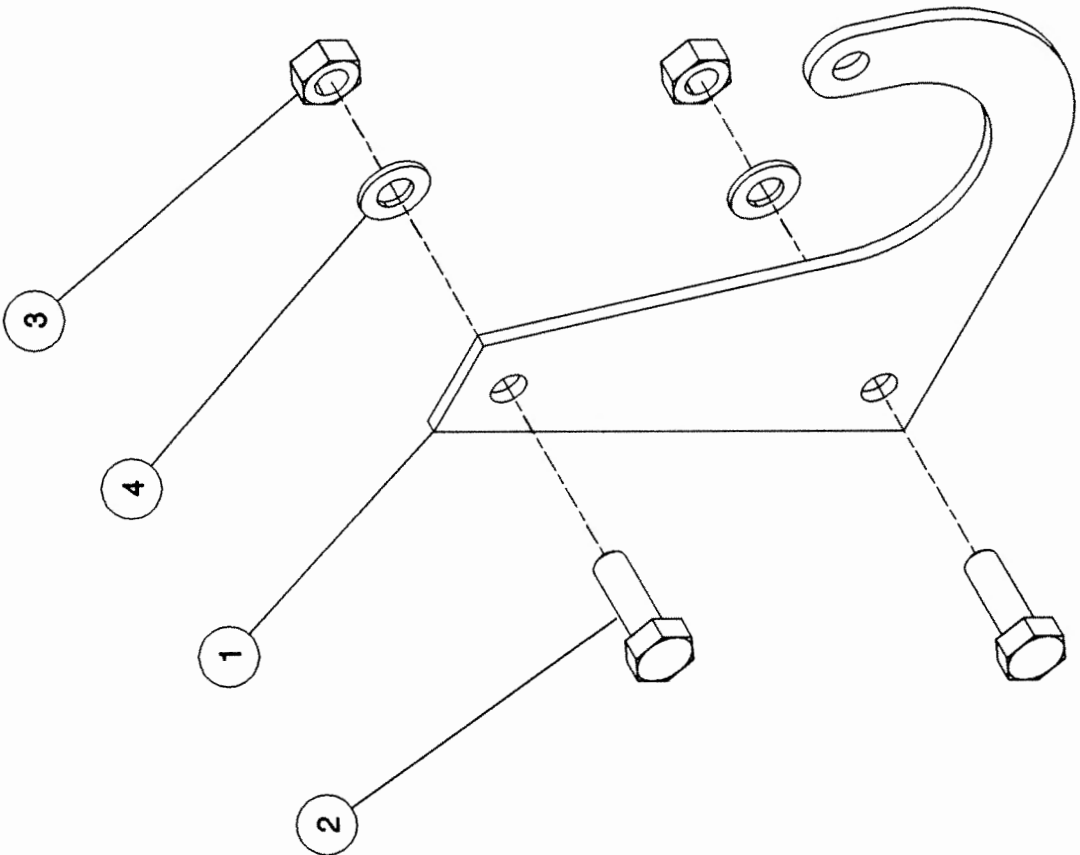
ASSY NUMBER: 196534 168				ASSY DESCRIPTION: DRIVE KIT 6.6-8.4M DEUTZ-ALLIS (ALL)			
ITEM	PART NO	DESCRIPTION	QTY	ITEM	PART NO	DESCRIPTION	QTY
1	191804 27	SELECT GEAR 27T (28t inv)	1				
2	191804 29	SELECT GEAR 29T (28t inv)	1				
3	PTO-17004	FLEX POWER SHAFT	1				
4	192768 16	AUGER SPROCKET	1				
5	CHN-01920	CHAIN	93				
6	CHN-01901	JOINING LINK	1				
7	KIT-00931	PTO SUPPORT KIT	1				

RX HEADER ILLUSTRATED



**Shelbourne Reynolds Engineering Limited**

ASSY NUMBER:		KIT-00931		ASY DESCRIPTION: PTO SUPPORT KIT			
ITEM	PART NO	DESCRIPTION	QTY	ITEM	PART NO	DESCRIPTION	QTY
1	191945 01	PTO SUPPORT	1				
2	HSS-0238	SET SCREW	2				
3	NUT-0269	NYLOC NUT	2				
4	WSH-0018	PLAIN WASHER	2				



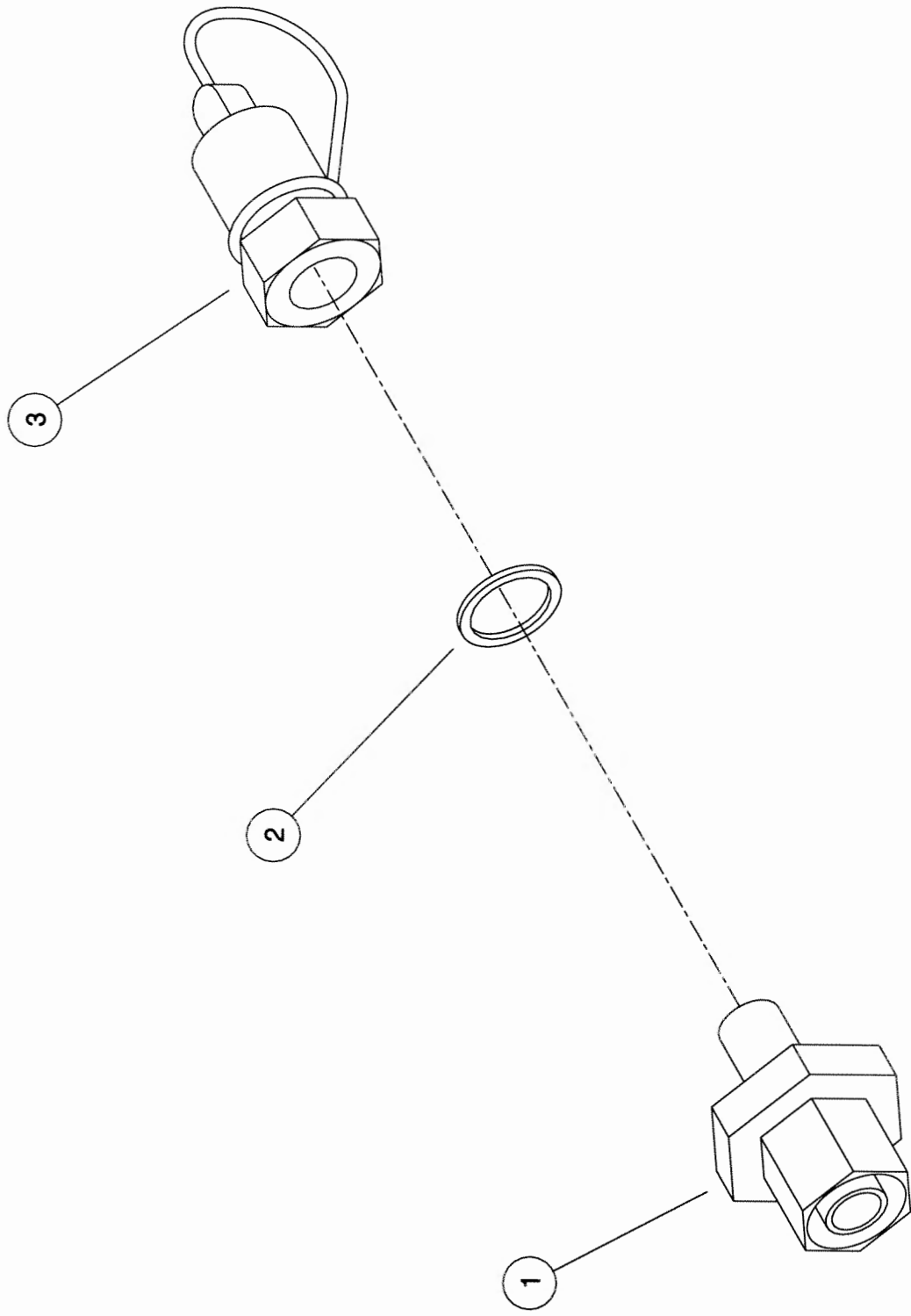


# ***RX & CX Shelbourne Header***

**HYDRAULIC  
FITTINGS**

**Shelbourne Reynolds Engineering Limited**

ASSY NUMBER:		KIT-01720		SUB ASSY DESCRIPTION: HYDRAULIC KIT			
ITEM	PART NO	DESCRIPTION	QTY	ITEM	PART NO	DESCRIPTION	QTY
1	FIT-0518	ADAPTOR	1				
2	WSH-1005	DOWTY WASHER	1				
3	HQR-00503	PROBE COUPLING	1				



KIT - 01720

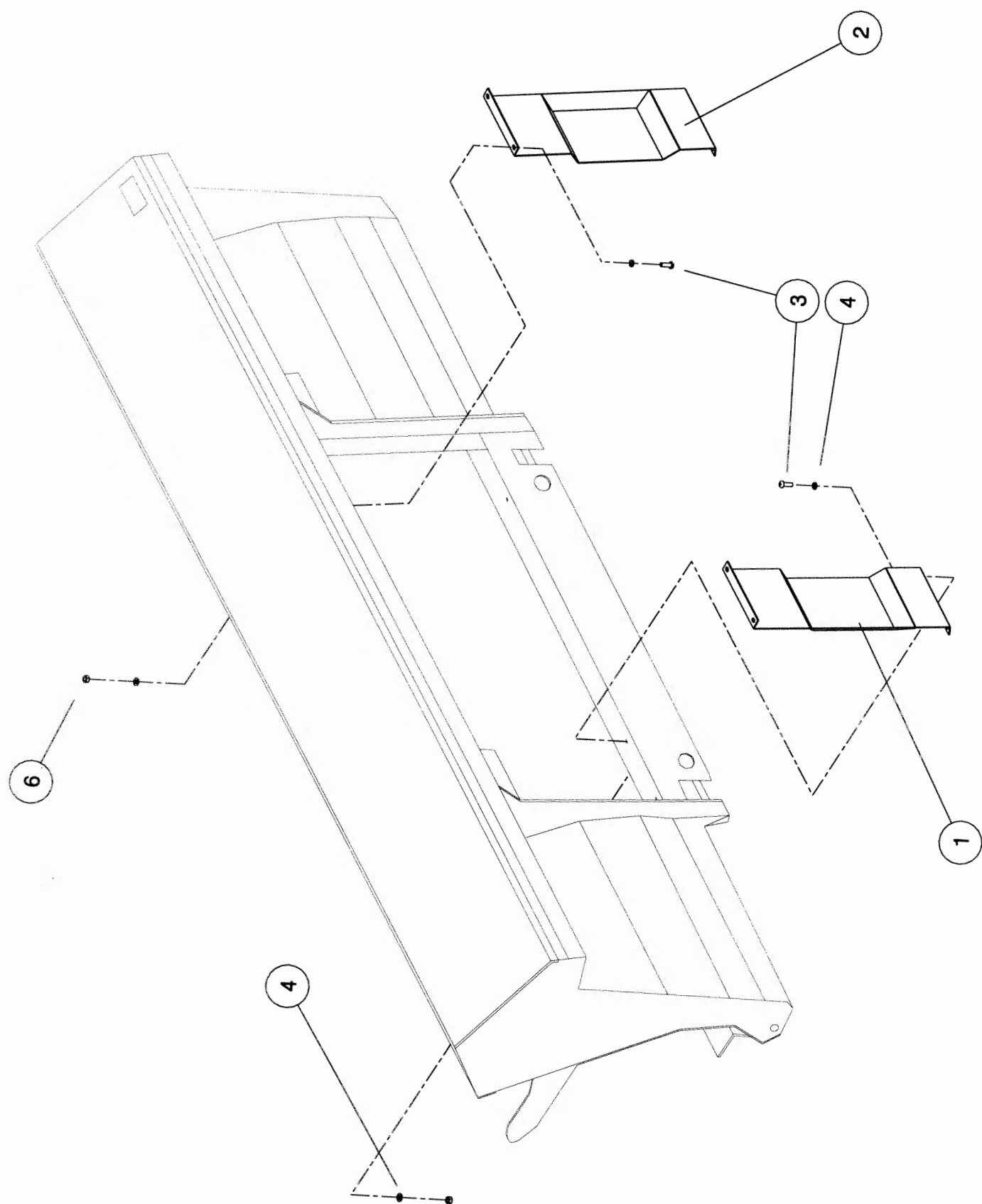


## ***RX & CX Shelbourne Header***

KIT  
OPTIONS

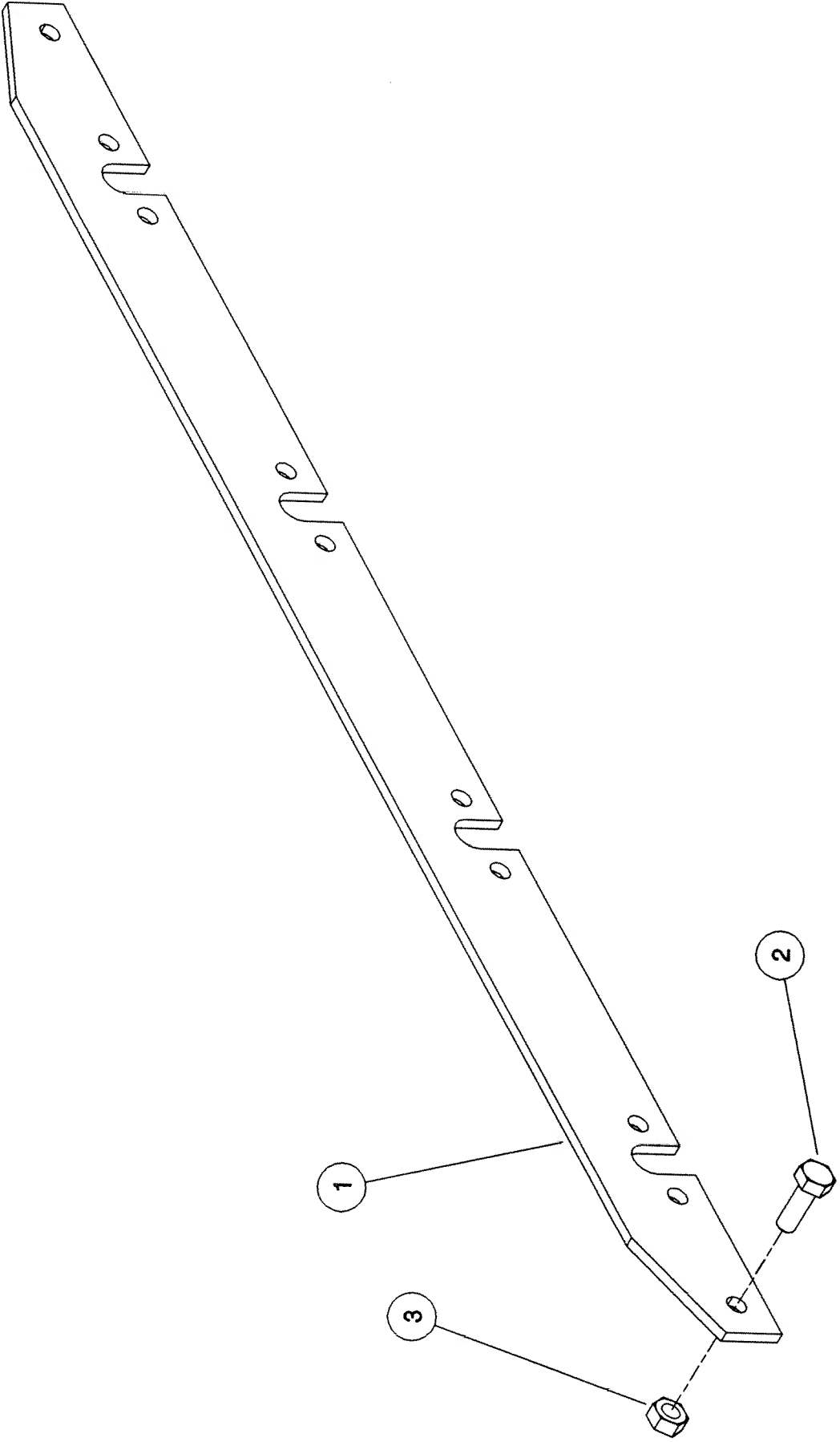
**Shelbourne Reynolds Engineering Limited**

ASSY NUMBER: KIT-00809				SUB ASSY DESCRIPTION: STRAW DEFLECTOR KIT (DEUTZ ALLIS)			
ITEM	PART NO	DESCRIPTION	QTY	ITEM	PART NO	DESCRIPTION	QTY
1	193396 01	STRAW DEFLECTOR LH	1				
2	193396 02	STRAW DEFLECTOR RH	1				
3	SCW-0525	SCKT BUTTON HD	8				
4	WSH-0012	PLAIN WASHER	16				
5							
6	NUT-0263	NYLOC NUT	8				



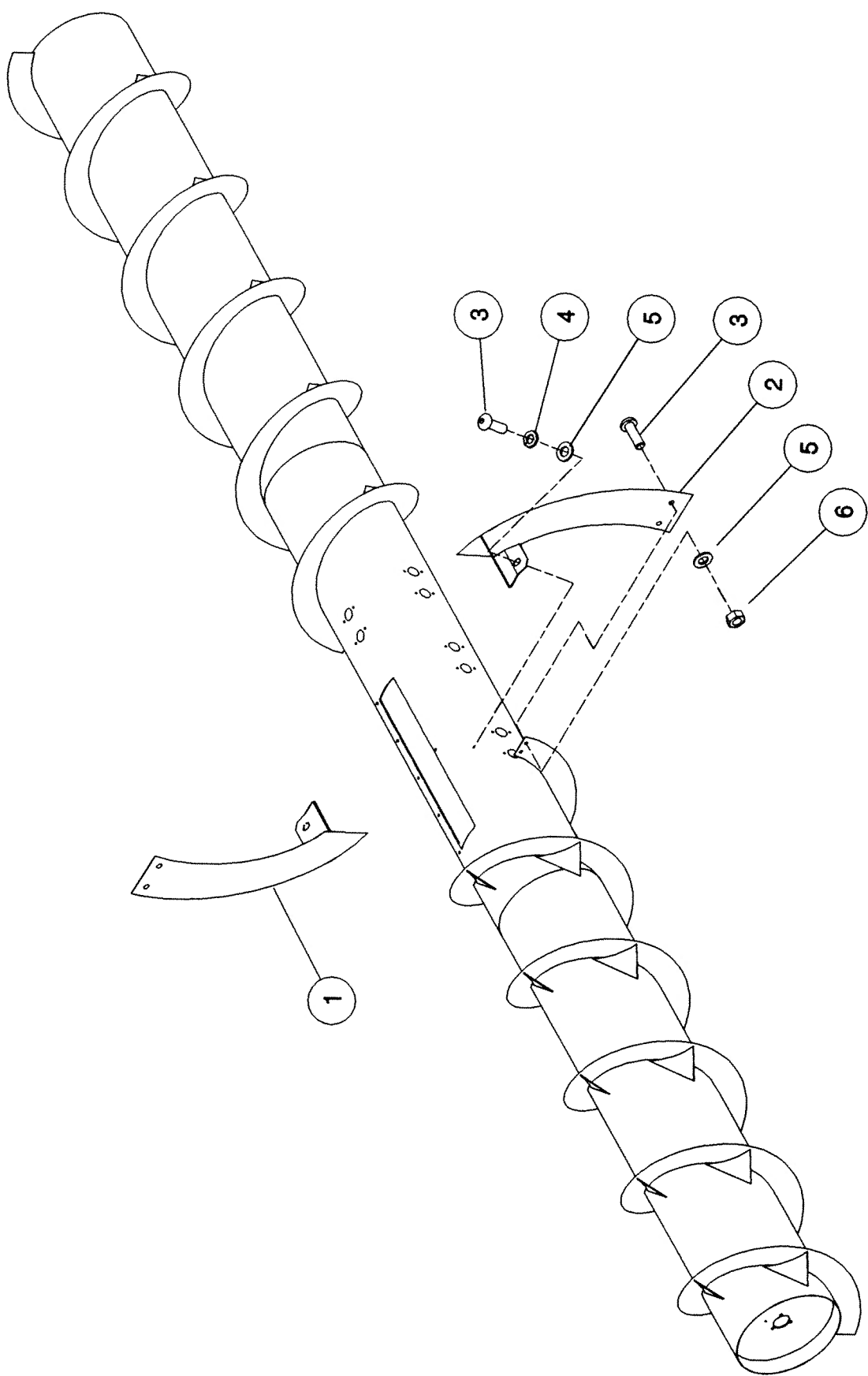
**Shelbourne Reynolds Engineering Limited**

ASSY NUMBER:		KIT-00914		SUB ASSY DESCRIPTION:		DEUTZ ALLIS (R60/R70) RICE KIT	
ITEM	PART NO	DESCRIPTION	QTY	ITEM	PART NO	DESCRIPTION	QTY
1	191842 01	EXTENSION BAR	13				
2	HSS-1054	SET SCREW	130				
3	NUT-0217	WILLOCK NUT	130				



**Shelbourne Reynolds Engineering Limited**

ASSY NUMBER:		KIT-00965		SUB ASSY DESCRIPTION: AUGER FLIGHT EXTENSIONS (RX/CX)			
ITEM	PART NO	DESCRIPTION	QTY	ITEM	PART NO	DESCRIPTION	QTY
1	192227 01	AUGER FLIGHT EXT. L. H	1				
2	192227 02	AUGER FLIGHT EXT. R. H	1				
3	SCBA08172	BUT. SKT. HD SCREW	6				
4	WSH-0058	SPRING WASHER	2				
5	WSH-0012	PLAIN WASHER	6				
6	NUT-0263	NYLOC NUT	4				



**Shelbourne Reynolds Engineering Limited**

ASSY NUMBER:		KIT-00970		SUB ASSY DESCRIPTION: PROTECTION PANS KIT			
ITEM	PART NO	DESCRIPTION	QTY	ITEM	PART NO	DESCRIPTION	QTY
1	192712 01	PROTECTION PAN (1 HOLE)	2				
2	HSS-0191	SET SCREW	6				
3	WSH-0015	WASHER	8				
4	NUT-0265	NUT	6				

